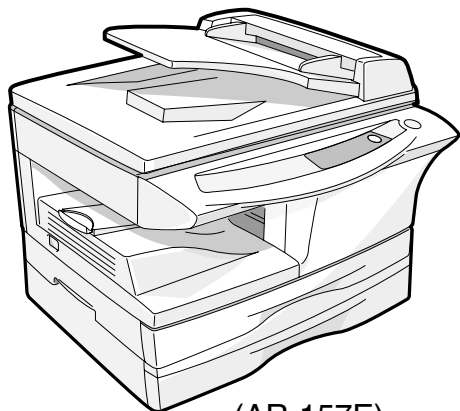


## DIGITAL LASER COPIER / DIGITAL MULTIFUNCTIONAL SYSTEM



(AR-157E)

**AR-122E**  
**AR-152E**  
**AR-153E**  
**MODEL AR-157E**

### CONTENTS

- |    |   |    |   |
|----|---|----|---|
| 1  | Exteriors   | 18 | Single manual paper feeding unit (AR-122E/152E) |
| 2  | Original cover unit (AR-122E/152E/153E)               | 19 | Multi manual paper feeding unit (AR-153E/157E)  |
| 3  | RSPF exteriors (AR-157E)                              | 20 | Socket holder unit                              |
| 4  | RSPF transport unit (AR-157E)                         | 21 | TC case unit                                    |
| 5  | RSPF SPF pick up unit (AR-157E)                       | 22 | 250 sheets tray                                 |
| 6  | Operation panel                                       | 23 | Harness   |
| 7  | Side door unit  | 24 | 2ND frame unit (AR-157E)                        |
| 8  | Optical frame   | 25 | 2ND paper feeding unit (AR-157E)                |
| 9  | LSU unit  | 26 | Packing material & accessories                  |
| 10 | Delivery paper guide unit                             | 27 | Operation PWB                                   |
| 11 | Middle frame  | 28 | MCU PWB   |
| 12 | Base plate unit 1                                     | 29 | DC power supply PWB (120V Series)               |
| 13 | Base plate unit 2                                     | 30 | DC power supply PWB (127V Series)               |
| 14 | Fusing unit   | 31 | DC power supply PWB (200V Series)               |
| 15 | Drive unit  | ■  | Index   |
| 16 | Single manual paper feeding cover unit (AR-122E/152E) |    |   |
| 17 | Multi manual paper feeding cover unit (AR-153E/157E)  |    |   |

Because parts marked with "△" is indispensable for the machine safety maintenance and poeration, it must Be replaced with the parts specific to the product specification.

## DEFINITION

The definition of each Rank is as follows and also noted in the list

- A: Parts necessary to be stocked as High usage parts.
  - B: Parts necessary to be stocked as Standard usage parts.
  - C: Low usage parts.
  - D: Parts necessary for refurbish.
  - E: Unit parts recommended to be stocked for efficient after sales service.
- Please note that the lead time for the said parts may be longer than normal parts.
- S: Consumable parts.

Please note that the following parts used in Copier under the same description are classified into A or B Rank depending upon the place used.

Example: Gear made of Metal, Sprocket, Bearing, Belt made of Rubber, Spring clutch mechanism.

ARank : The parts which may be with the revolution or loading.

BRank : Parts similar to A Rank parts, but are not included in Rank A.

Because parts marked with "△" is indispensable for the machine safety maintenance and operation, it must be replaced with the parts specific to the product specification.

- Other than this Parts Guide, please refer to documents Service Manual(including Circuit Diagram)of this model.
- Please use the 13 digit code described in the right hand corner of front cover of the document, when you place an order.
- For U.S. only-Use order codes provided in advertising literature. Do not order from parts department.

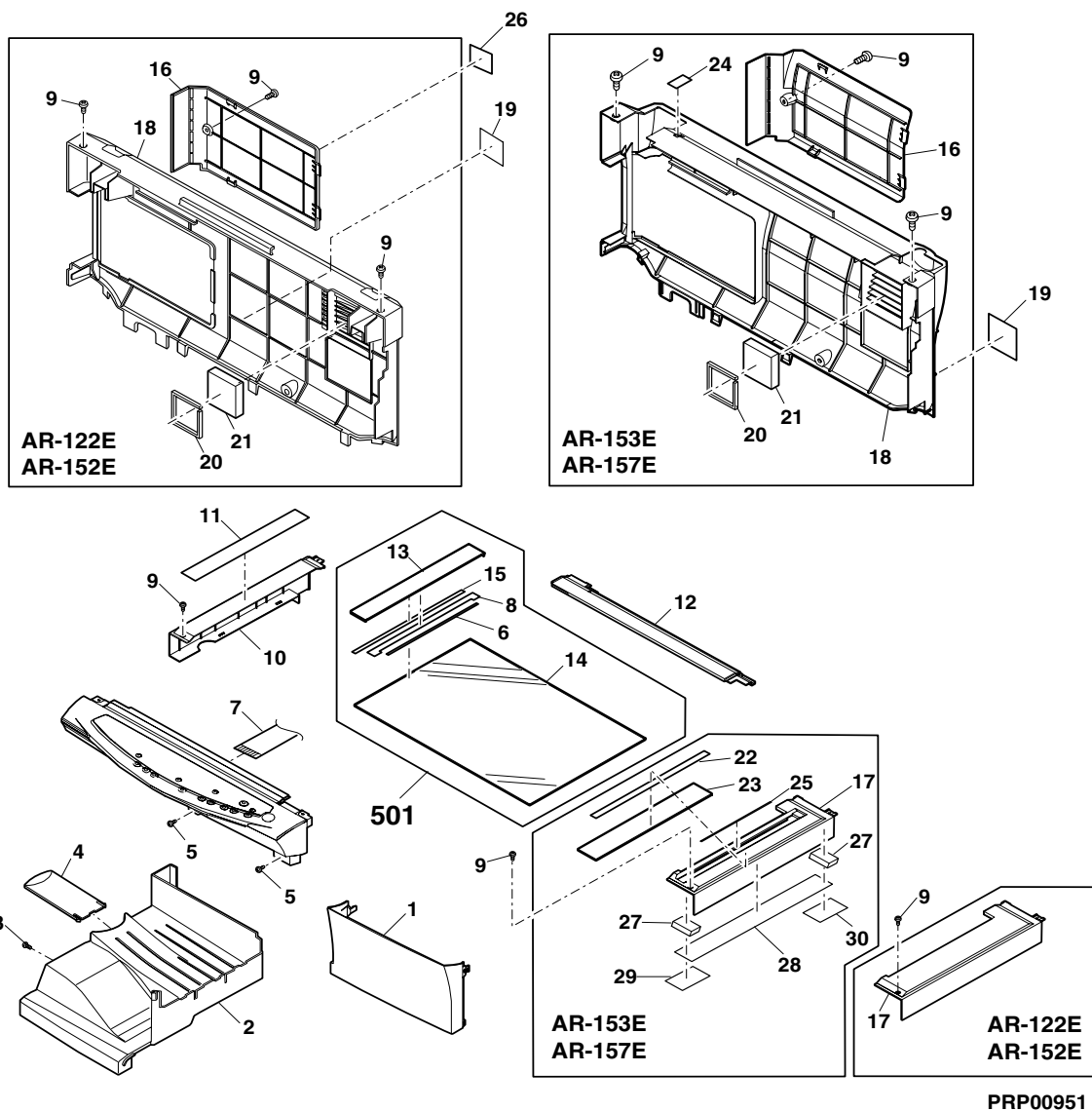
## 1 Exteriors

NO.	PARTS CODE	PRICE RANK	NEW MARK	PART RANK	DESCRIPTION
1	CCAB-0003QS23	AS	N	D	Front cover
2	LSOU-0001QSJZ	AY	N	D	Delivery tray
3	XEBSE30P08000	AA		C	Screw(3×8)
4	LSOU-0008QSJZ	AH	N	D	Extension tray
5	XEBSE40P12000	AA		C	Screw(4×12)
6	PTPE-0041QSZZ	AB	N	C	Glass fixing tape B
7	DHAI-0285QSZZ	AK	N	C	OP-MCU harness
8	PSHEZ0369QSZZ	AE	N	C	Shading sheet
9	XBBSE30P08000	AA		C	Screw(3×8)
10	GCAB-0061QSZZ	AK	N	D	Left exterior
11	TLABH0403QSZZ	AF	N	C	Operation instruction label
12	GCOV-0045QSZZ	AG		D	Rear cover SPF (AR-157E)
	GCOV-0045QSZ1	AG	N	D	Rear cover OC (AR-122E/152E/153E)
13	CFIX-0021QS01	AG	N	D	Glass fixing plate
14	PGLSP0007QSZZ	AV	N	B	Table glass
15	PTPE-0040QSZZ	AC	N	C	Glass fixing tape A
16	PCOVP0035QSJZ	AL	N	D	Rear exterior cover JAG (AR-122E/152E)
	PCOVP0040QSJZ	AL		D	Rear exterior cover SPF (AR-153E/157E)
17	GCAB-0062QSZ1	AL	N	D	Right exterior OC (AR-122E/152E)
	GCAB-0062QSZZ	AL		D	Right exterior (AR-153E/157E)
18	GCAB-0021QSJ1	AY	N	D	Rear exterior (AR-122E/152E)
	GCAB-0026QSJ2	AZ		D	Rear exterior SPF (AR-153E/157E)
19	TCAUA0770FCZZ	AB		D	Service caution label
20	PMLT-0024QSZZ	AC		C	Fan cushion
21	PFILZ0002QSZZ	AL		D	Ozone filter
22	PTPE-0044QSZZ	AC		C	Slit glass tape (AR-153E/157E)
23	PGLSP0008QSZZ	AH		B	SPF glass (AR-153E/157E)
24	PSHEZ0181QSJZ	AC		C	Rear cabinet maylar (AR-153E/157E)
25	PTPE-0010QSZZ	AC		C	Slit glass tape (AR-153E/157E)
26	TLABZ0058QSZZ	AD		D	Class 1 label (AR-122E/152E)
27	PMLT-0069QSZZ	AA	N	C	Ground malt (AR-153E/157E)
28	PSHEZ0404QSZZ	AF	N	C	Right cabinet ground sheet (AR-153E/157E)
29	PTPE-0047QSZZ	AC	N	C	Ground tape F (AR-153E/157E)
30	PTPE-0048QSZZ	AA	N	C	Ground tape R (AR-153E/157E)
501	CFIX-0021RS51	BB	N	E	Table unit

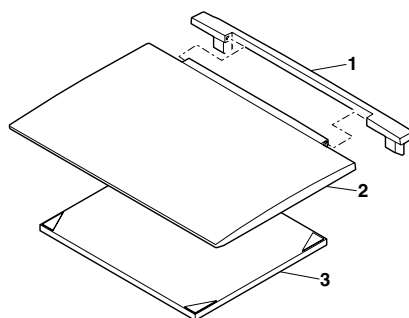
## 2 Original cover unit (AR-122E/152E/153E)

NO.	PARTS CODE	PRICE RANK	NEW MARK	PART RANK	DESCRIPTION
1	GCOVH0003QSJZ	AL	N	D	OC cover S
2	GCOVH0004QSJ1	AX	N	D	OC cover M
3	PCUSS0024QSZZ	AV	N	D	OC mat
	(Unit)				
901	CCOVH0004RS54	BF	N	E	OC cover unit

## 1 Exteriors



## 2 Original cover unit (AR-122E/152E/153E)



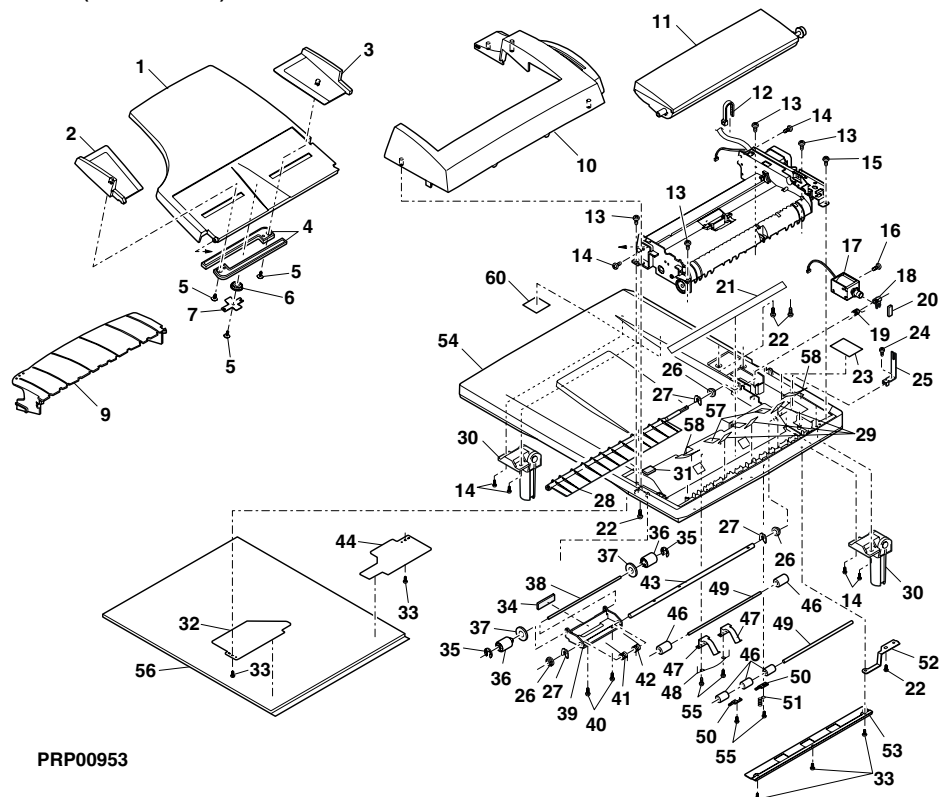
## 3 RSPF exteriors (AR-157E)

NO.	PARTS CODE	PRICE RANK	NEW MARK	PART RANK	DESCRIPTION
1	LSOU-0035QSZZ	AR		D	Original tray
2	LPLTP0011QSJZ	AH		C	Control plate F
3	LPLTP0012QSJZ	AH		C	Control plate R
4	NGERR0377FCZZ	AD		C	Manual feeding rack gear
5	XEPSD30P08X00	AA		C	Screw(3x8X)
6	NGERH0193FCZZ	AB		C	Manual feeding gear
7	MSPRP0059QSZZ	AD		C	Control plate spring
9	LSOU-0006QSZZ	AL		D	Middle tray
10	PCOVPO022QSJZ	AT		C	Upper cover
11	CFRM-0011RS59	BG		E	RSPF pick up unit
12	LBNDJ0013FCZ1	AA		C	Wire band
13	XEBSE40P12000	AA		C	Screw(4x12)
14	XEBSE40P14000	AA		C	Screw(4x14)

### 3 RSPF exteriors (AR-157E)

NO.	PARTS CODE	PRICE RANK	NEW MARK	PART RANK	DESCRIPTION
15	XHBSE30P10000	AA		C	Screw(3×10)
16	XBPSD30P06KS0	AA		C	Screw(3×6KS)
17	RPLU-0005QSZZ	AQ		B	Gate solenoid
18	MLEVP0036QSZZ	AD		C	Delivery gate lever
19	MSPRD0126QSZZ	AC		C	Delivery gate spring
20	PSP0-0004QSZZ	AB		C	Delivery gate sponge
21	PSHEZ0384QSZZ	AD		C	Base tray sheet
22	XEBSE30P14000	AA		C	Screw(3×14)
23	PSHEZ0151QSZZ	AD		C	Motor sheet DSPF
24	XBPSD30P08KS0	AA		C	Screw(3×8KS)
25	MLEVF0041QSZZ	AD		C	Lever
26	NBRGM0501FCZZ	AB		C	Metal D
27	PRNGP0090FCZZ	AA		C	Ring(E5)
28	LPLTP0014QSZZ	AK		C	Delivery gate
29	PSHEZ0068QSZZ	AC		C	PS sheet
30	MHNG-0019QSZZ	AS		C	RSPF hinge JAG
31	PCUSS0016QSZZ	AB		C	Middle tray cushion
32	PSHEZ0380QSZZ	AD		C	OC mat sheet DFJAG
33	LX-BZ0016QSZZ	AC		C	Screw(3×8)
34	PSP0-0003QSZZ	AC		C	Sponge
35	XRESP20-04000	AA		C	E-ring
36	NROLP0011QSZZ	AD		C	Delivery roller
37	PSP0-0001QSZZ	AB		C	Sponge
38	NSFTZ0013QSZZ	AF		C	Delivery shaft
39	LPLTP0041QSZZ	AE		C	Pressure plate
40	XBPSD30P10KS0	AB		C	Screw(3×10KS)
41	MSPRD0070QSZZ	AC		C	Delivery spring B
42	MSPRD0069QSZZ	AC		C	Delivery spring A
43	NSFTZ0014QSZZ	AP		C	Shaft
44	PSHEZ0381QSZZ	AD		C	OC mat sheet DRJAG
46	NROLP0010QSZZ	AD		C	Transport roller
47	MSPRP0052QSZZ	AD		C	Delivery spring
48	MSPRD0154QSZZ	AD		C	Delivery earth spring
49	NSFTZ0009QSZZ	AE		C	Transport shaft
50	MSPRP0060QSZZ	AD		C	Transport spring
51	MSPRC0149QSZZ	AC		C	PS earth spring SPF
52	LPLTM0122QSZZ	AD		C	Support plate earth
53	LPLTM0096QSZZ	AF		C	Base tray reinforce plate
54	LSOU-0007QSJZ	BB		D	Base tray R
55	XEBSD30P08000	AA		C	Screw(3×8)
56	PCUSS0025QSZZ	AQ		D	OC mat
57	PSHEZ0386QSZZ	AB		D	Rear side mylar A
58	PSHEZ0387QSZZ	AB		D	Rear side mylar B
60	PSHEZ0383QSZZ	AC		C	Book detect sheet

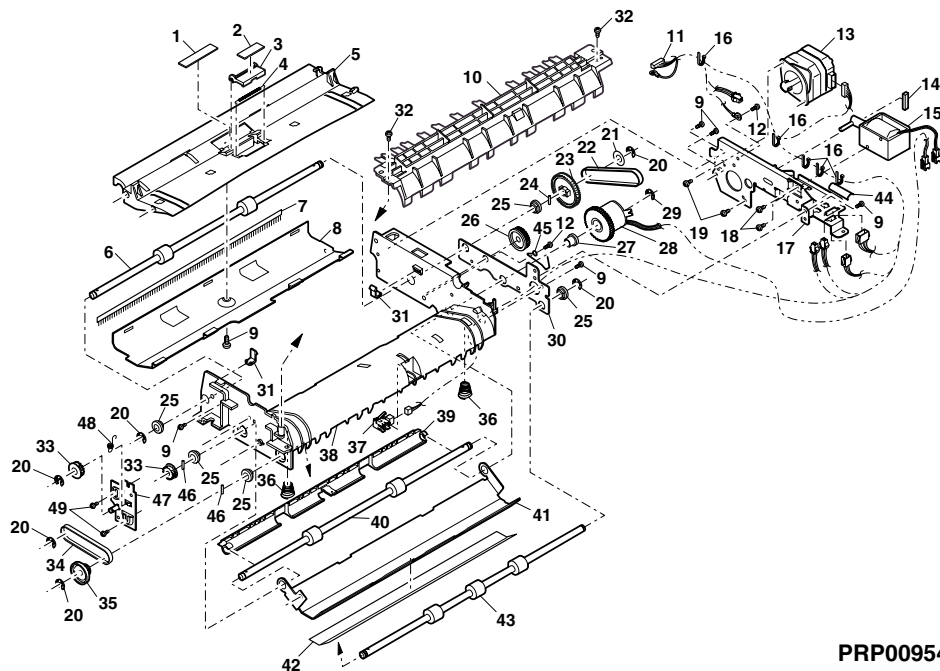
### 3 RSPF exteriors (AR-157E)



#### 4 RSPF transport unit (AR-157E)

NO.	PARTS CODE	PRICE RANK	NEW MARK	PART RANK	DESCRIPTION
1	PSHEZ2174FCZZ	AB		C	Paper feeding sheet
2	PSHEZ0039QSZZ	AG		C	Sheet
3	LPLTP0013QSZZ	AD		C	Plate
4	MSPRC0062QSZZ	AC		C	Pressure spring
5	PGIDM0022QSZZ	AN		C	Paper feeding paper guide upper
6	NROLM0027QSZZ	AL		C	Delivery roller R
7	PBRSR0003QSZZ	AG		B	Discharge brush
8	PGIDH0028QSZZ	AK		C	Paper feeding paper guide lower
9	XEBSD30P08000	AA		C	Screw(3x8)
10	PGIDM0057QSZZ	AL		C	U-turn R paper guide
11	DHAI-0304QSZZ	AQ	N	C	R-SPF interface harness
12	XHBSE30P06000	AA		C	Screw(3x6)
13	RMOTP0013QSZZ	BB		B	SPF motor
14	PSPO-0004QSZZ	AB		C	Delivery gate sponge
15	RPLU-0015QSZZ	AS		B	Solenoid
16	LBNDJ0013FCZZ	AA		C	Wire band
17	LFRM-0015QSZZ	AK		C	Drive frame R
18	XBBSD30P04000	AA		C	Screw(3x4)
19	XBPSD30P05K00	AA		C	Screw(3x5K)
20	XRESP50-06000	AA		C	E-ring
21	PSHEP3029FCZZ	AA		C	Flange sheet DUP2
22	NBLTT0011QSZZ	AG		B	Belt(85MXL4.8)
23	NGERH0047QSZZ	AF		C	Gear(48T/15T)
24	XPSSP20-09000	AA		C	Spring pin(φ2-9)
25	NBRGM0501FCZZ	AB		C	Metal D
26	NGERH0079QSZZ	AD		C	Gear(30T)
27	NBRGC0017QSZZ	AC		C	Bearing(F6-10)
28	PCLC-0010QSZZ	AT		B	Transport clutch
29	XRESP40-06000	AA		C	E-ring
30	LFRM-0014QSZZ	AE		C	Frame RD
31	MSPRP0065QSZZ	AD		C	Open and shut lock spring
32	XEBSD30P12000	AA		C	Screw(3x12)
33	NPLYZ0146FCZZ	AB		C	22MXL pulley(22MXL)
34	NBLTT0032QSZZ	AE		B	Belt(B75MXL4.8)
35	JKNBZ0004QSZZ	AD		C	JAM release knob
36	MSPRC0063QSZZ	AB		C	Delivery paper guide spring
37	RDTCT0004QSZZ	AL		B	Inlet detect sensor
38	PGIDM0021QSZZ	AQ		C	Transport R paper guide
39	LPLTP0015QSZZ	AH		C	Turnover gate
40	NROLM0026QSZZ	AL		C	Transport roller
41	PGIDH0027QSZZ	AK		C	Delivery R paper guide
42	PSHEZ0164QSZZ	AF		C	White sheet
43	NROLM0022QSZZ	AL		C	PS roller
44	PSHEZ0162QSZZ	AB		C	Harness protection sheet R
45	MSPRD0163QSZZ	AC		C	Earth spring
46	LPIINS0019QSZZ	AB		C	Spring pin(φ2.5-9)
47	CPLTM0299QS01	AF		C	RSPF tension plate
48	MSPRT0294QSZZ	AC		C	SPF tension spring
49	XEBSE30P10000	AA		C	Screw(3x10)

#### 4 RSPF transport unit (AR-157E)

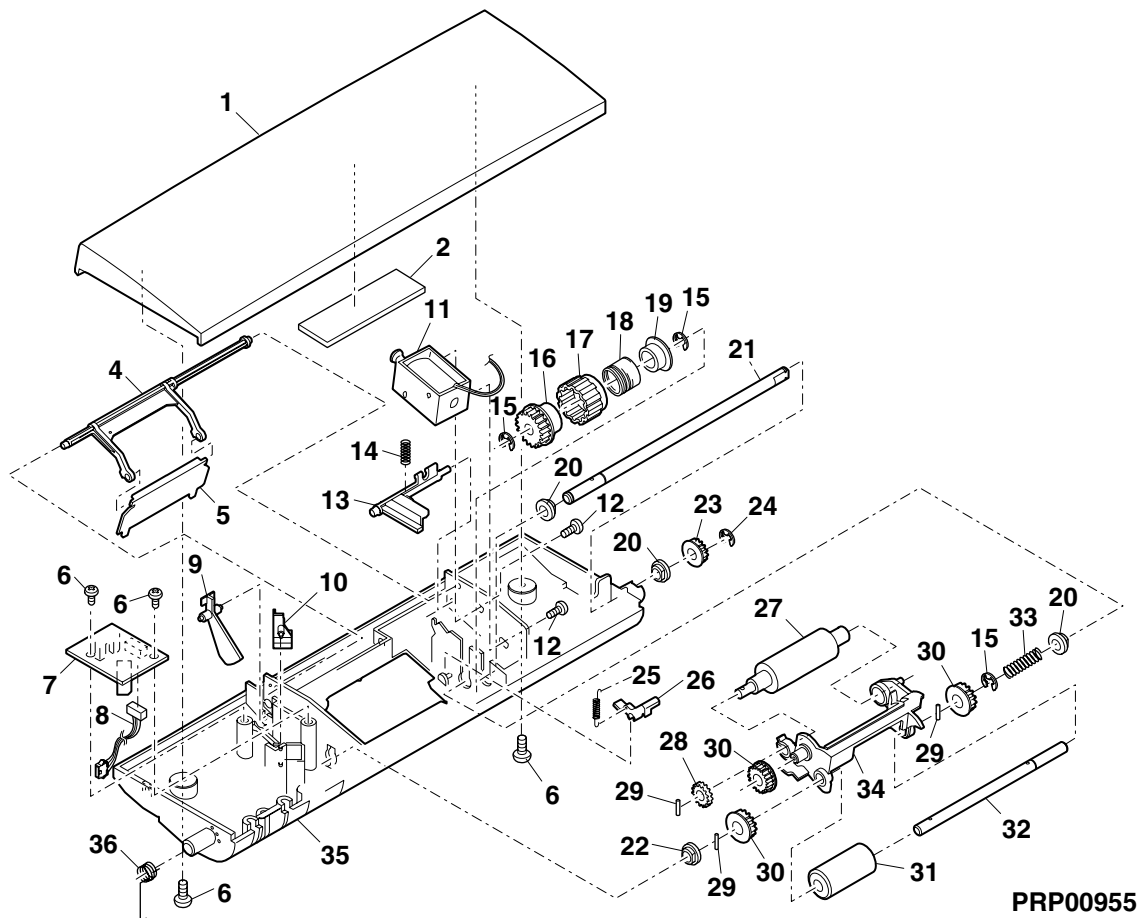


PRP00954

## 5 RSPF SPF pick up unit (AR-157E)

NO.	PARTS CODE	PRICE RANK	NEW MARK	PART RANK	DESCRIPTION
1	GCAB-0008QSJZ	AM		D	Open and shut exterior
2	PSPO-0002QSZZ	AC		C	Stopper sponge
4	MARMP0003QSZ1	AD		C	Stopper arm
5	LSTPP0007QSZZ	AC		C	Paper stopper R
6	XEBSD30P08000	AA		C	Screw(3×8)
7	CPWBF0009RS51	AG		E	SPF sensor PWB
8	DHAI-0293QSZZ	AE		C	Sensor harness
9	MLEVP0009QSZZ	AD		C	Set detect lever ACT
10	MLEVP0010QSZZ	AE		C	Open and shut detect lever ACT
11	RPLU-0004QSZ1	AQ		B	PU solenoid
12	XBPSD30P06KS0	AA		C	Screw(3×6KS)
13	MARMP0002QSZZ	AD		C	Solenoid arm
14	MSPRT0067QSZ1	AB		C	Solenoid arm spring
15	XRESP40-06000	AA		C	E-ring
16	NGERH0073QSZZ	AE		C	Clutch gear(20T)
17	PPiPP0010QSZZ	AD		C	Clutch sleeve
18	MSPRC1316FCZ1	AE		C	MF clutch spring B
19	LBOSZ1851FCZZ	AC		C	STK clutch boss
20	LBSHZ0303FCZZ	AC		C	M bushing C
21	NSFTZ0012QSZZ	AG		C	Clutch shaft
22	LBSHZ0006QSZZ	AC		C	M Bushing 2
23	NPLYZ0010QSZZ	AE		C	20MXL pulley
24	XRESP30-06000	AA		C	E-ring
25	MSPRT0066QSZ1	AC		C	Clutch pawl spring
26	PTME-0019QSZZ	AD		C	Clutch pawl
27	NROLP0024QSZ1	AH		C	Pick up roller
28	NGERH0990FCZZ	AB		C	Gear(16T)
29	XPSSP20-07000	AA		C	Spring pin(φ2-7)
30	NGERH0992FCZZ	AB		C	Gear(20T)
31	NROLR0922FCZZ	AR		C	Manual feeding roller
32	NSFTZ0011QSZZ	AF		C	PF shaft
33	MSPRC0115QSZZ	AB		C	Paper feeding spring
34	MARMP0004QSZZ	AF		C	Pick up arm
35	LFRM-0011QSJ2	AL		D	Paper feeding frame
36	MSPRD0114QSZ1	AD		C	PF frame spring
	(Unit)				
901	CFRM-0011RS59	BG		E	RSPF pick up unit

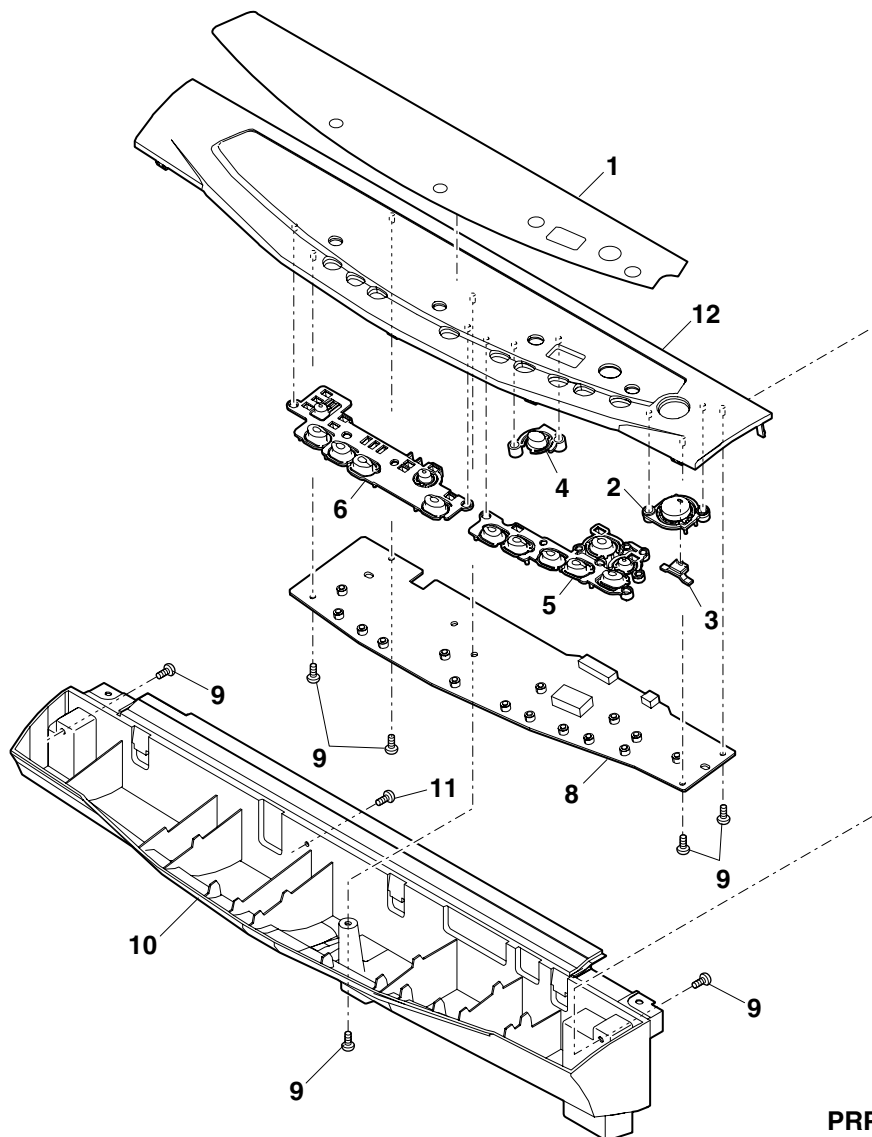
## 5 RSPF SPF pick up unit (AR-157E)



## 6 Operation panel

NO.	PARTS CODE	PRICE RANK	NEW MARK	PART RANK	DESCRIPTION
1	CPNLH0023QS12	AR	N	D	Panel (AR-122E)
	CPNLH0023QS13	AR	N	D	Panel (AR-152E)
	CPNLH0023QS21	AS	N	D	Panel (AR-153E)
	CPNLH0023QS22	AS	N	D	Panel (AR-157E)
2	CBTN-0019QS02	AF		E	Copy key
3	JBTN-0020QSZZ	AC		C	Copy key light
4	JBTN-0005QSZZ	AC		C	% Key
5	CBTN-0050QS01	AE	N	E	Operation key R
6	JBTN-0049QSZZ	AF	N	C	Operation key L
8	CPWBF0113QSE8	BB	N	E	Operation PWB (AR-122E/152E)
	CPWBF0113QSE9	BB	N	E	Operation PWB (AR-153E)
	CPWBF0113QSF0	BB	N	E	Operation PWB (AR-157E)
9	XEBSD30P08000	AA		C	Screw(3x8)
10	GCAB-0063QSZZ	AT	N	D	Operation cabinet
11	XEBSE30P10000	AA		C	Screw(3x10)
12	GCAB-0064QSZZ	AN	N	D	Operation panel

## 6 Operation panel

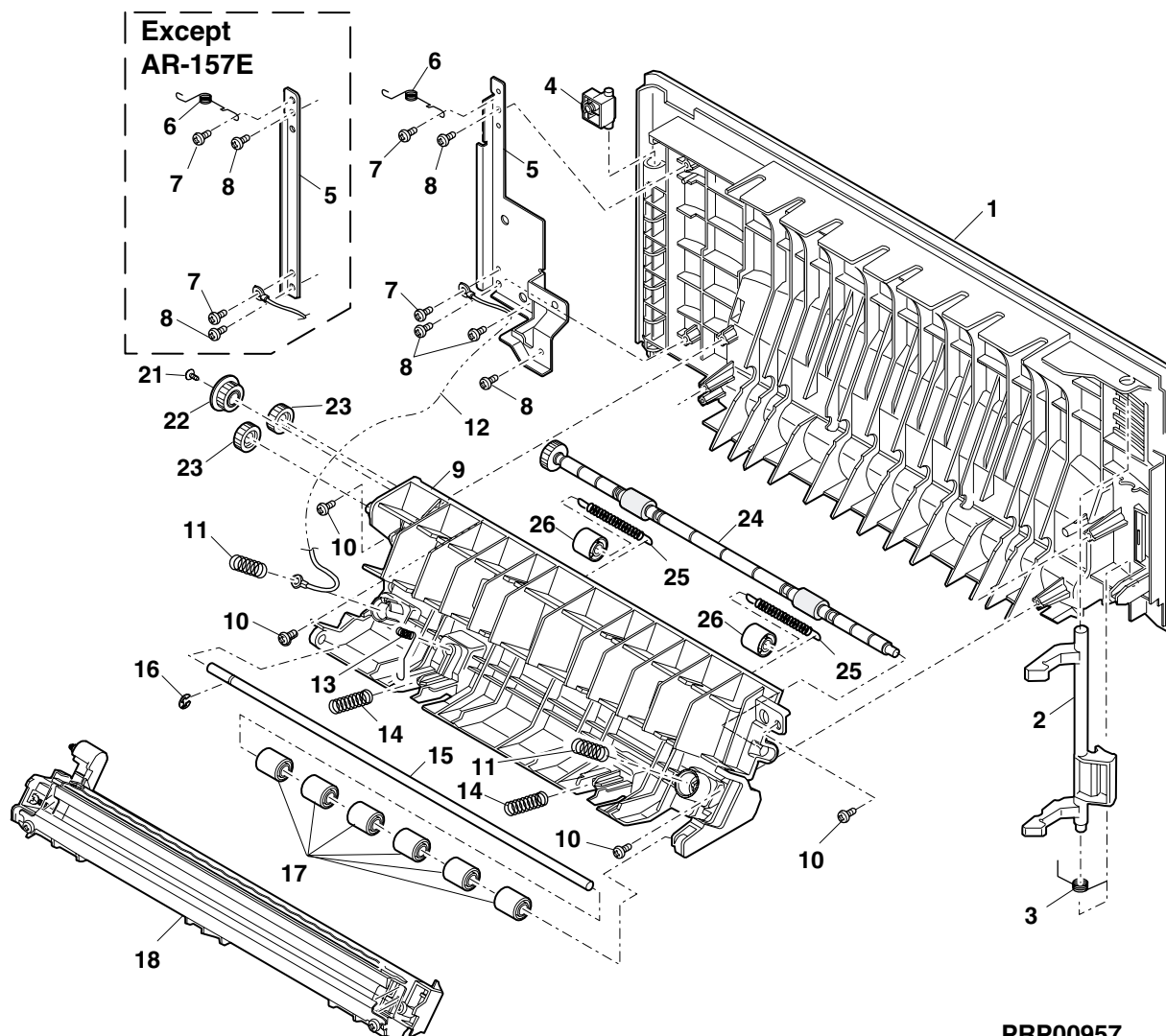


PRP00956

## 7 Side door unit

NO.	PARTS CODE	PRICE RANK	NEW MARK	PART RANK	DESCRIPTION
1	GCAB-0007QSSJ2	AU	N	D	Side door
2	PTME-0004QSSZZ	AG		C	Lock pawl
3	MSPRT0029QSSZZ	AC		C	Lock pawl spring
4	PGIDM0008QSSZZ	AD		C	Hinge guide
5	LPLTM0043QSSZZ	AD		C	Earth plate (AR-122E/152E/153E)
	LPLTM0132QSSZZ	AH		C	Earth plate (AR-157E)
6	MSPRD0076QSSZ1	AD		C	Earth spring
7	XHBSE30P06000	AA		C	Screw(3×6)
8	XEBSE30P06000	AA		C	Screw(3×6)
9	LFRM-0003QSSJ2	AN		D	Side door inner frame
10	XEBSD30P10000	AA		C	Screw(3×10)
11	MSPRC0032QSSZZ	AB		C	Transcription pressure spring
12	DHAI-0291QSSZZ	AC	N	C	TCFB harness
13	MSPRC0031QSSZZ	AB		C	PS earth spring
14	MSPRC0030QSSZZ	AC		C	PS pressure spring
15	NSFTZ0006QSSZ1	AG		C	PS shaft
16	XRESP30-06000	AA		C	E-ring
17	NROLP1122FCZZ	AF		C	PS upper roller
18	CHLDZ0010RS52	AU		E	Transcription holder unit
21	XEPSD30P08X00	AA		C	Screw(3×8) (AR-157E)
22	NGERH0048QSSZZ	AE		C	DUP drive gear (AR-157E)
23	NGERH0051QSSZZ	AE		C	DUP drive gear A (AR-157E)
24	NROLP0025QSSZZ	AM		C	DUP drive roller (AR-157E)
25	MSPRC0050QSSZZ	AB		C	DUP pressure spring (AR-157E)
26	NROLP1122FCZZ	AF		C	PS upper roller (AR-157E)

## 7 Side door unit

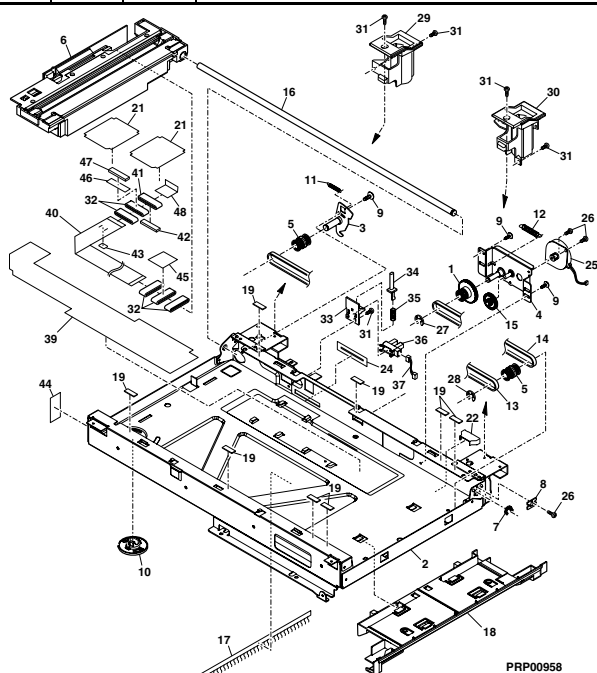


PRP00957

## 8 Optical frame

NO.	PARTS CODE	PRICE RANK	NEW MARK	PART RANK	DESCRIPTION
1	CGERH0162QS01	AN	N	E	Pulley gear
2	CPLTM0288QS01	BC	N	E	Scanner plate
3	CPLTM0291QS01	AG	N	E	Tension plate
4	CPLTM0294QS01	AK	N	E	Motor fixing plate
5	CPLYZ0028QS01	AM		E	Idle pulley
6	DUNT-0276QSZZ	BT	N	E	Carriage unit (Other Countries)
	DUNT-0276QS11	BT	N	E	Carriage unit (Europe)
7	LHLDZ0093QSZZ	AC	N	C	Rod holder
8	LSTPF0013QSZZ	AC	N	C	Rod stopper
9	LX-BZ0033QSZZ	AB		C	Screw(3x6)
10	MLOKZ0004QSZZ	AD	N	C	Carriage lock
11	MSPRT0283QSZZ	AC	N	C	Tension spring
12	MSPRT0284QSZZ	AC	N	C	Motor spring
13	NBLTT0030QSZZ	AH	N	B	Belt
14	NBLTT0031QSZZ	AF	N	B	Belt
15	NGERH0161QSZZ	AL	N	C	Idle gear
16	NSFTZ0063QSZZ	AK	N	C	Slide shaft
17	PBRSR0002QSZ1	AH		B	Discharger brush (Other Countries)
	PBRSR0002QSZZ	AG		B	Discharger brush (U.S.A,Soudi arabia)
18	PGIDM0099QSZZ	AH	N	C	Paper guide
19	PGUMS0004QSZZ	AA		C	Table glass cushion
21	PSHEZ0367QSZZ	AD	N	C	Cable fixing sheet
22	PDUC-0005QSZZ	AD	N	C	Fan duct JAG
24	PSHEZ0377QSZZ	AC	N	C	Edge protect sheet
25	RMOTS0038QSZZ	BL	N	B	Scanner motor
26	XHBSE30P06000	AA		C	Screw(3x6)
27	XRESP50-06000	AA		C	E-ring
28	XRESP70-08000	AA		C	E-ring
29	PGIDM0059QSJZ	AG	N	C	OC hinge guide L (AR-153E)
	PGIDM0019QSJZ	AH		C	SPF hinge guide L (AR-157E)
30	PGIDM0060QSJZ	AF	N	C	OC hinge guide R (AR-153E)
	PGIDM0020QSJZ	AH		C	SPF hinge guide R (AR-157E)
31	XHBSE30P08000	AA		C	Screw(3x8)
32	RCORF0018QSZZ	AR	N	C	FFC core
33	LPLTP0131QSZZ	AD		C	Book sensor attachment plate (AR-157E)
34	MLEVP0047QSE1	AD		C	Book sensor ACT (AR-157E)
35	MSPRC0153QSZZ	AB		C	Book sensor spring (AR-157E)
36	VHPGP1A71A1-1	AG		B	Photo transistor(GP1A71A1) (AR-157E)
37	DHAI-0303QSZZ	AD		C	Harness (AR-157E)
39	PSHEZ0389QSZZ	AH	N	C	Scanner sheet (Other Countries)
	PSHEZ0389QSZ1	AK	N	C	Scanner sheet (Europe)
40	DHAI-0268QSZZ	AZ		C	CCD-MCU harness (Other Countries)
	DHAI-0268QSZ1	AH	N	C	CCD-MCU harness (Europe)
41	RCORF0020QSZZ	AL	N	C	FFC core
42	PCUSU0026QSZZ	AC	N	D	Core cushion
43	PTPE-0045QSZZ	AA	N	C	CCD harness double-sided tape
44	PSHEZ0403QSZZ	AG	N	C	Noise sheet (Europe)
45	PSHEZ0401QSZZ	AG	N	C	Scanner core sheet (Europe)
46	PTPE-0046QSZZ	AB	N	C	Core double-sided tape (Europe)
47	PMLT-0068QSZZ	AC	N	C	Core holder malt (Europe)
48	PSHEZ0400QSZZ	AG		C	PWB core miler (Europe)

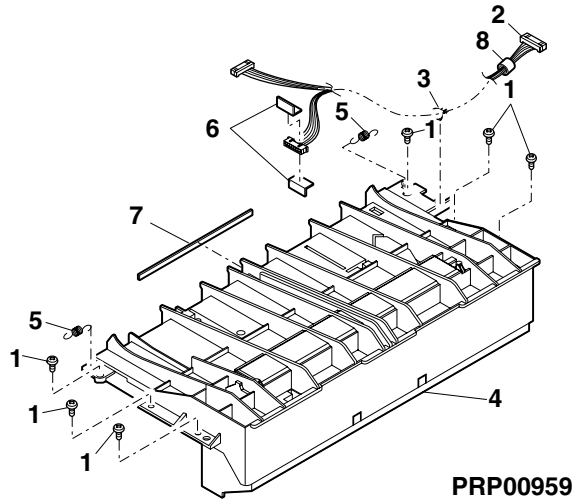
## 8 Optical frame



## 9 LSU unit

NO.	PARTS CODE	PRICE RANK	NEW MARK	PART RANK	DESCRIPTION
1	XEBSD30P12000	AA		C	Screw(3×12)
2	DHAI-0282QSZZ	AG	N	C	LSU harness
3	LBNDJ0013FCZ1	AA		C	Wire band
4	DUNTK0013QS13	BS	N	E	LSU unit(A4600D)
5	MSPRT0019QSZ1	AB		C	Delivery paper guide spring
6	PSHEZ0350QSZZ	AB		C	LSU protect sheet A
7	PSHEZ0351QSZZ	AB		C	LSU protect sheet B
8	RCORF0021QSZZ	AK	N	C	Core

## 9 LSU unit

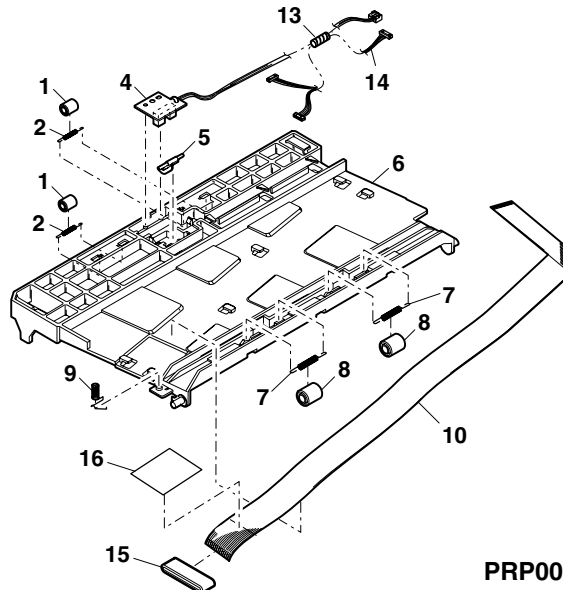


PRP00959

## 10 Delivery paper guide unit

NO.	PARTS CODE	PRICE RANK	NEW MARK	PART RANK	DESCRIPTION
1	NROLP0046QSZZ	AC		C	Delivery roller upper
2	MSPRT0020QSZ1	AB		C	Delivery roller spring
4	CPWBF0116RS53	AP		E	POD sensor PWB
5	MLEVP0005QSZZ	AD		C	Delivery actuator
6	PGIDM0006QSZZ	AM		C	Delivery paper guide
7	MSPRC0021QSZZ	AB		C	Delivery transport roller spring
8	NROLP1122FCZZ	AF		C	PS upper roller
9	MSPRD0281QSZZ	AD	N	C	Delivery earth spring
10	DHAI-0285QSZZ	AK	N	C	OP-MCU harness
13	PTUBP0005QSZZ	AC		C	Tube (AR-157E)
14	DHAI-0282QSZZ	AG	N	C	LSU harness
15	RCORF0018QSZZ	AR	N	C	FFC core (Europe)
16	PSHEZ0402QSZZ	AG		C	Panel core sheet (Europe)

## 10 Delivery paper guide unit

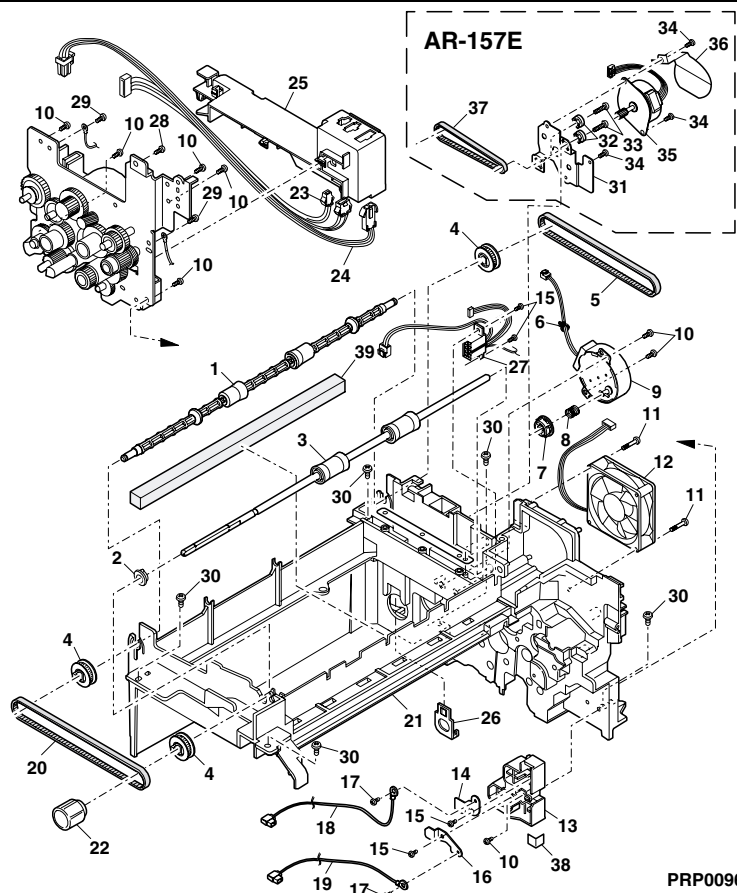


PRP00960

# 11 Middle frame

NO.	PARTS CODE	PRICE RANK	NEW MARK	PART RANK	DESCRIPTION
1	NROL P0007QS Z1	AQ		C	Delivery roller lower
2	NBRGC0579FC Z Z	AE		C	Roller bearing
3	NROL P0012QS Z2	AL	N	C	Delivery trasport roller lower
4	NPLYZ0001QS Z Z	AE		C	Pulley(22T)
5	NBLT-0005QS Z Z	AH		B	Delivery roller drive belt (AR-122E/152E/153E)
6	LBNDJ0043FC Z Z	AA		C	Snap band(SG-130)
7	NCPL-0006QS Z Z	AC		C	Hopper cupring S
8	MSPRC0024QS Z1	AC		C	Hopper spring
9	RMOTD0009QS Z Z	AU		B	Toner motor
10	XEBSD30P10000	AA		C	Screw(3x10)
11	XEBSD30P30000	AA		C	Screw(3x30)
12	NFANP0005QS Z1	BR	N	B	Fan
13	LHLDZ0018QS Z Z	AE		C	TC high voltage holder
14	QSLP-0006QS Z Z	AE		C	BC HV electrode plate
15	XEBSD30P06000	AA		C	Screw(M3x6)
16	QSLP-0005QS Z Z	AE		C	TC HV electrode plate
17	XBPSC30P06K00	AA		C	Screw(3x6K)
18	DHAI-0267QS Z Z	AG		C	BC harness
19	DHAI-0292QS Z Z	AF	N	C	TC harness
20	NBLTT0001QS Z Z	AH		B	Belt 308
21	LFRM-0035QS Z Z	AZ		D	Middle frame
22	JKNBZ0001QS Z Z	AE		C	Roller rotation knob
23	DHAI-0287QS Z Z	AF	N	C	PPD2 interface harness
24	DHAI-0274QS Z Z	AG		C	HL harness 1 (100V Series)
24	DHAI-0276QS Z2	AL		C	HL harness 1 (200V Series)
25	PGIDM0009QS Z Z	AG		C	Harness guide
26	LPINS0008QS Z Z	AD		C	DV guide pin (Other Countries)
26	LPINS0009QS Z Z	AD		C	DV guide pin (Europe,Australia,New zealand)
27	DHAI-0271QS Z Z	AP		C	DSV harness
28	LX-BZ3006SC0S	AA		C	Screw(3x6)
29	XBBSD30P08000	AA		C	Screw(3x8)
30	XEBSE40P12000	AA		C	Screw(4x12)
31	LPLTM0133QS Z1	AE		C	DUP motor sink (AR-157E)
32	PSPA Z0017QS Z Z	AK		C	DUP spacer (AR-157E)
33	XEBSD30P10000	AA		C	Screw(3x10) (AR-157E)
34	XHBSE30P06000	AA		C	Screw(3x6) (AR-157E)
35	RMOTP0012QS Z Z	AW		B	DUP transport motor (AR-157E)
36	PSHEZ0156QS Z Z	AE		C	Harness protection sheet (AR-157E)
37	NBLTT0004QS Z Z	AH		B	Belt (AR-157E)
38	PSHEZ0155QS Z Z	AD		C	Sheet (AR-157E)
39	PMLT-0067QS Z Z	AC	N	C	Cushion

# 11 Middle frame

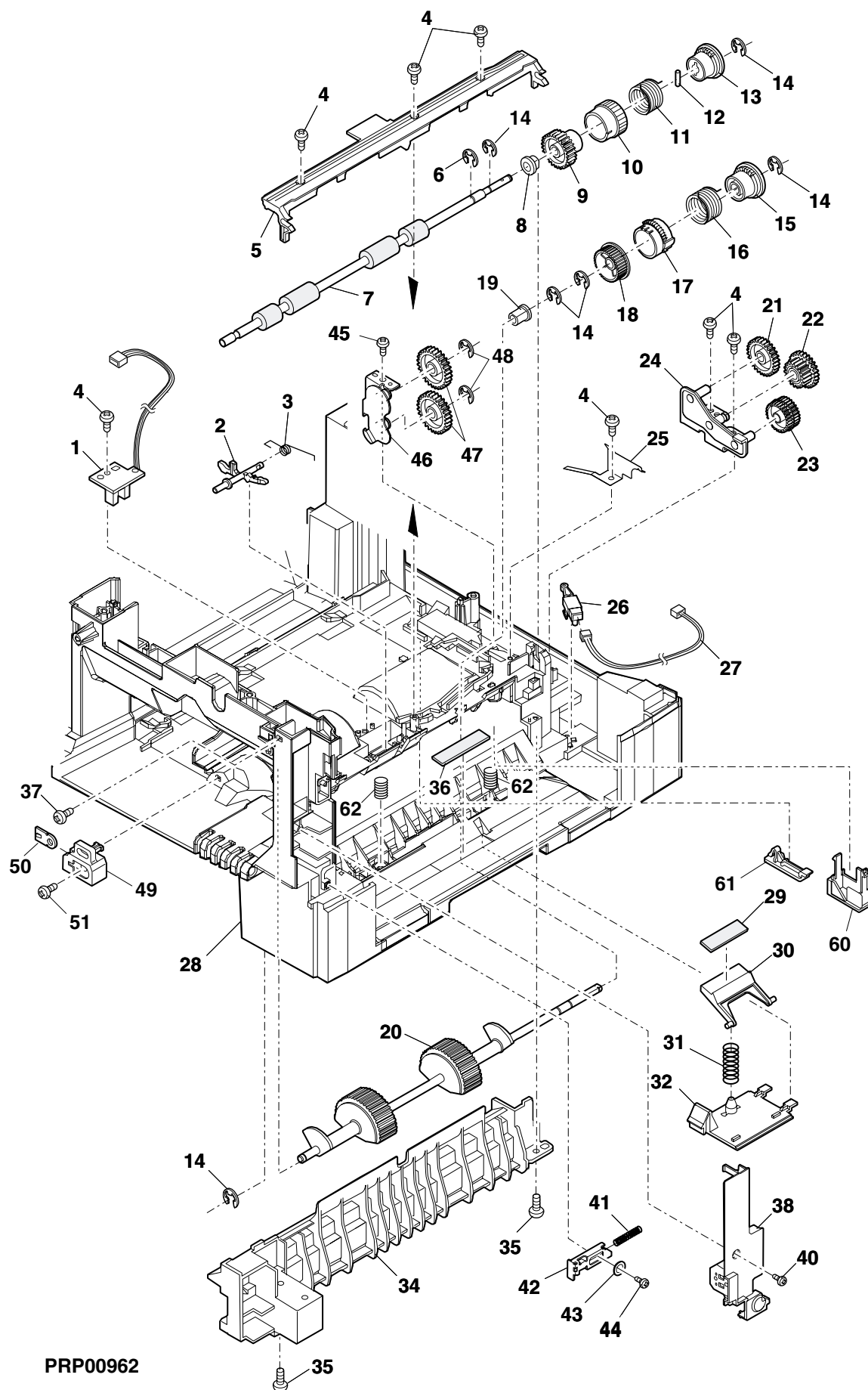


PRP00961

12 Base plate unit 1

[illegible]

12 Base plate unit 1

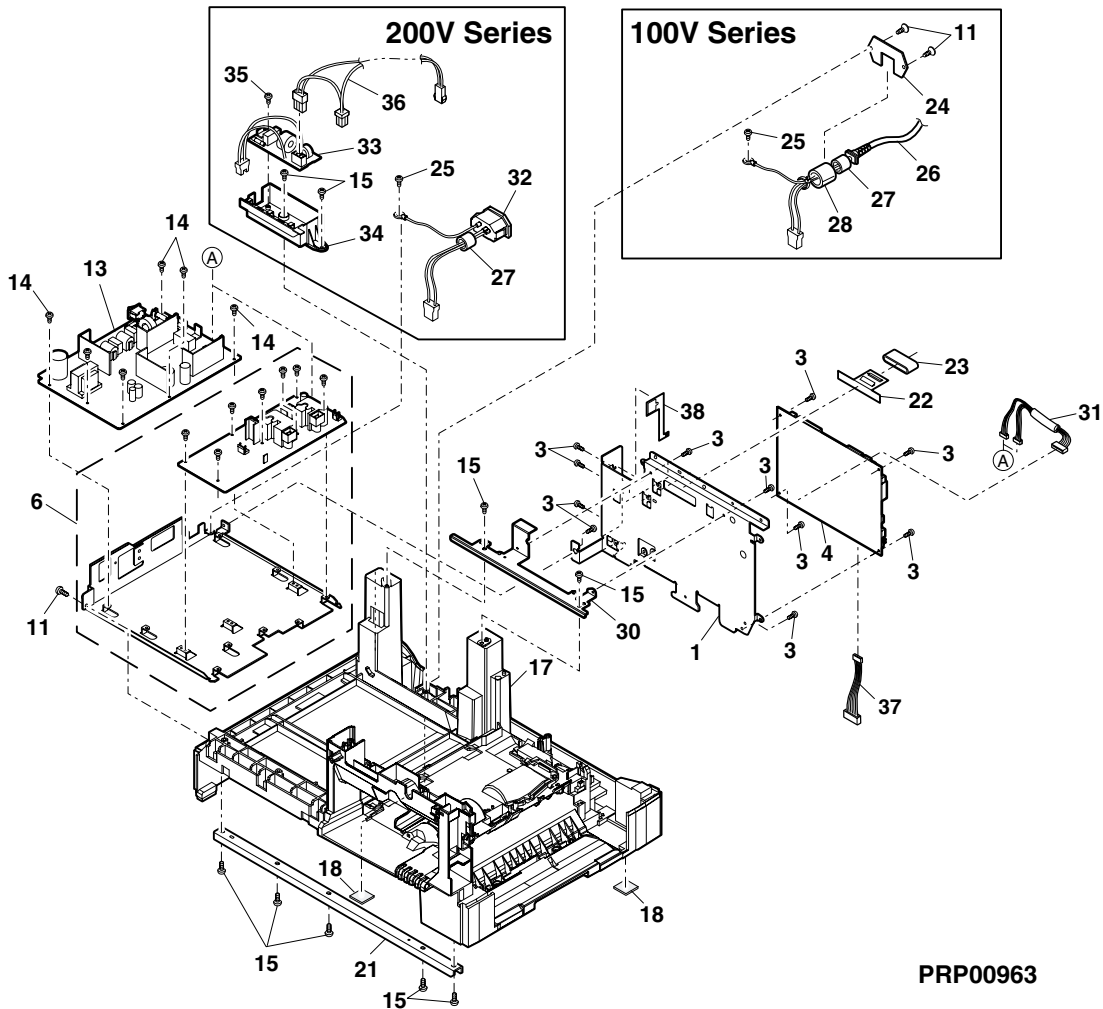


PRP00962

### 13 Base plate unit 2

NO.	PARTS CODE	PRICE RANK	NEW MARK	PART RANK	DESCRIPTION
1	LHLDZ0092QSZZ	AP	N	C	PWB holder JAG
3	XHBSE30P06000	AA		C	Screw(3×6)
4	CPWBX0112QS3A	BW	N	E	MCU PWB (AR-122E)
	CPWBX0112QS3G	BW	N	E	MCU PWB (AR-152E)
	CPWBX0112QS3D	BY		E	MCU PWB (AR-153E/157E)
6	RDENC0007QSZZ	BG	N	E	High voltage PWB
11	XEBSE30P10000	AA		C	Screw(3×10)
13	RDENC0006QS12	BN		E	DC power supply PWB (120V Series)
	RDENC0006QS11	BQ	N	E	DC power supply PWB (127V Series)
	RDENC0006QS13	BN	N	E	DC power supply PWB (200V Series)
14	XBBSE30P06000	AA		C	Screw(3×6)
15	XEBSE40P12000	AA		C	Screw(4×12)
17	GDAi-0001QSJ1	BF	N	D	Base plate
18	GLEGG0064FCZZ	AC		C	Rubber foot
21	LPLTM0020QSZZ	AL		C	Base plate reinforce plate F
22	PSHEZ0390QSZZ	AL	N	C	PWB holder sheet
23	RCORF0018QSZZ	AR	N	C	FFC core
24	LHLDZ0096QSZZ	AN		C	AC in let holder (100V Series)
25	XBPSN40P06K00	AA		C	Screw(4×6K)
26	QACCD761AQCZZ	BE		B	AC cord (100V Series)
27	RCORF0021QSZZ	AK	N	C	Core
28	RCORF0034FCZZ	AR		C	Core (100V Series)
30	LFRM-0062QSZZ	AG	N	C	Connector frame
31	DHAi-0294QSZZ	AK	N	C	Center frame harness
32	DHAi-0305QSZZ	AP	N	C	Inlet interface harness (200V Series)
33	CPWBF0122QS31	AZ		E	Noise filter PWB (200V Series)
34	LHLDZ0097QSZZ	AG	N	C	Noise filter holder (200V Series)
35	XEBSD30P10000	AA		C	Screw(3×10) (200V Series)
36	DHAi-0276QSZZ	AL		C	HL harness 1 (200V Series)
37	DHAi-0265QSZZ	AM	N	C	2NDCS interface harness (AR-153E)
38	PSHEZ0405QSZZ	AE		C	Connector ground sheet (Europe)

### 13 Base plate unit 2

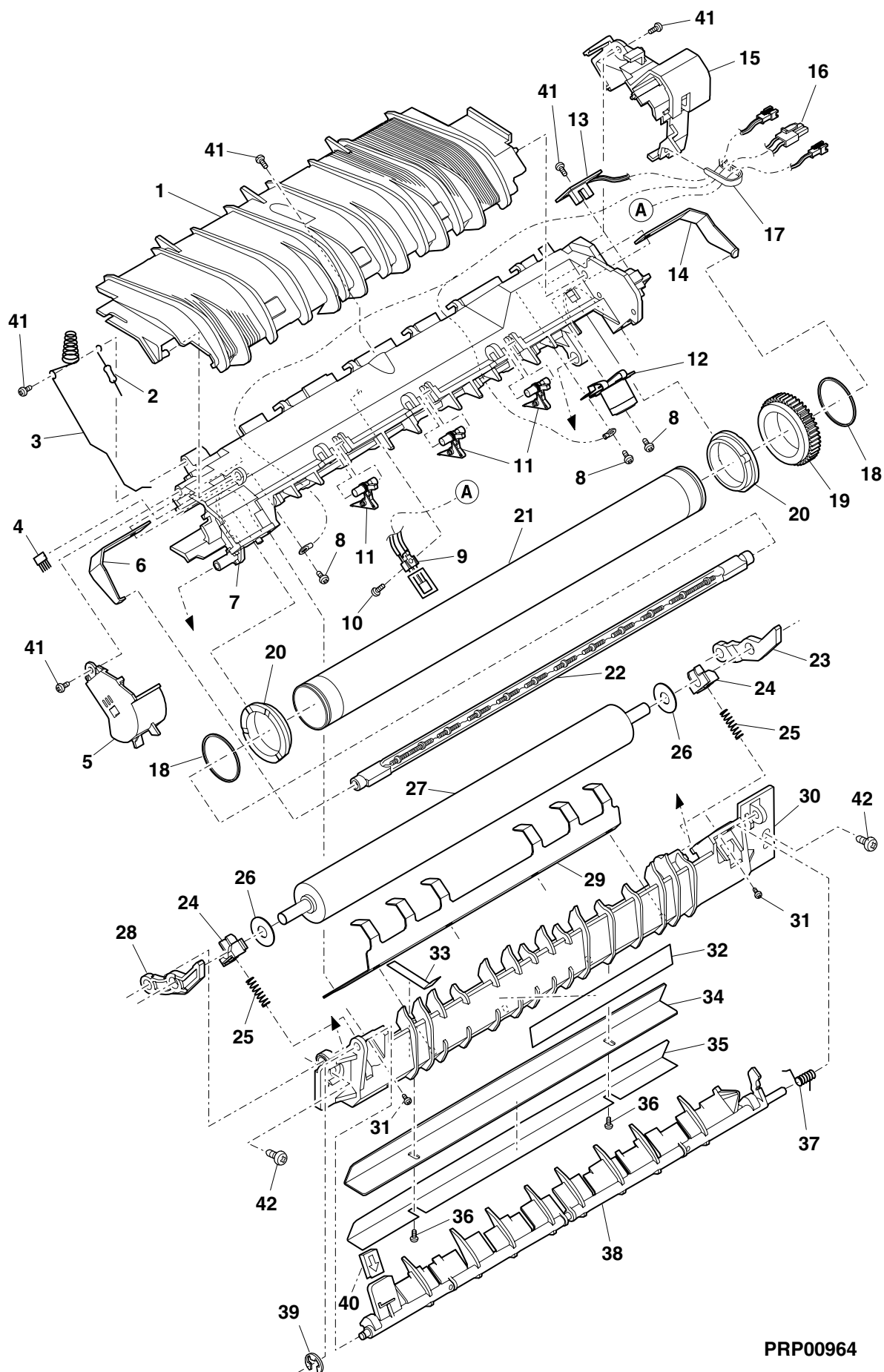


PRP00963

14 Fusing unit

[illegible]

# 14 Fusing unit

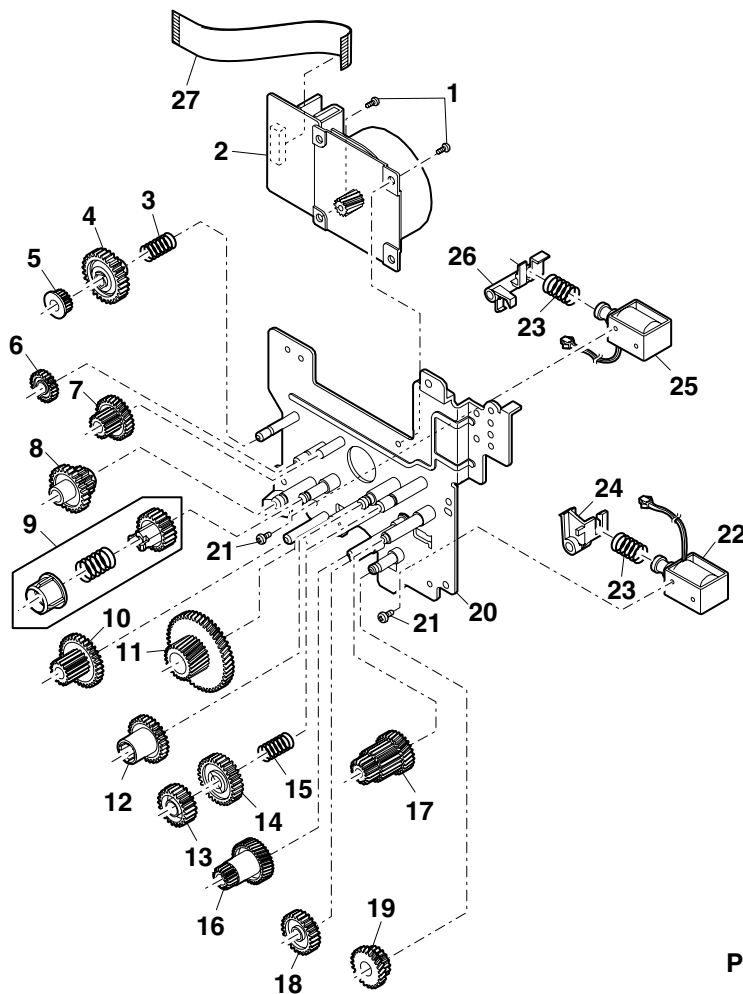


PRP00964

# 15 Drive unit

NO.	PARTS CODE	PRICE RANK	NEW MARK	PART RANK	DESCRIPTION
1	XBBSD40P06000	AA		C	Screw(4x6)
2	RMOTP0036QSZZ	BD	N	B	Main motor
3	MSPRC0053QSZ1	AC		C	Pulley spring (AR-122E/152E/153E)
4	NGERH0050QSZZ	AD		C	Ratchet gear(33T) (AR-122E/152E/153E)
5	NPLYZ0002QSZZ	AC		C	Pulley(17T) (AR-122E/152E/153E)
6	NGERH0010QSZZ	AD		C	Gear(28T)
7	NGERH0009QSZZ	AD		C	Gear(46/16T)
8	NGERH0014QSZZ	AD		C	Gear(30/15T)
9	CGERH0011RS51	AE		E	MG gear unit
10	NGERH0015QSZZ	AD		C	Gear(37/15T)
11	NGERH0007QSZZ	AH		C	Gear(68/26T)
12	NGERH0016QSZZ	AD		C	Cupring gear(34T)
13	NGERH0019QSZZ	AD		C	Ratchet gear(21T)
14	NGERH0018QSZZ	AC		C	Ratchet gear(28T)
15	MSPRC0023QSZ1	AC		C	Ratchet spring
16	NGERH0008QSZZ3	AL		C	Gear(55/19T)
17	NGERH0017QSZZ	AD		C	Gear(33/20/15T)
18	NGERH0012QSZZ	AE		C	Gear(20T)
19	NGERH0013QSZZ	AG		C	Gear(31/17T)
20	CPLTM0042QS02	AY		C	Main drive plate
21	XBBSD30P04000	AA		C	Screw(3x4)
22	RPLU-0035QSZZ	AL	N	B	Solenoid
23	MSPRC1318FCZ1	AA		C	Spring B
24	PTME-0002QSZZ	AD		C	PS roller pawl
25	RPLU-0002QSZZ	AN		B	Solenoid
26	PTME-0003QSZ1	AD		C	Roller pawl
27	DHAI-0296QSZZ	AK	N	C	Main motor harness
(Unit)					
901	CPLTM0042RS55	BM	N	E	Drive unit[Except No.27] (AR-122E/152E/153E)
	CPLTM0042RS56	BM		E	Drive unit[Except No.27] (AR-157E)

# 15 Drive unit

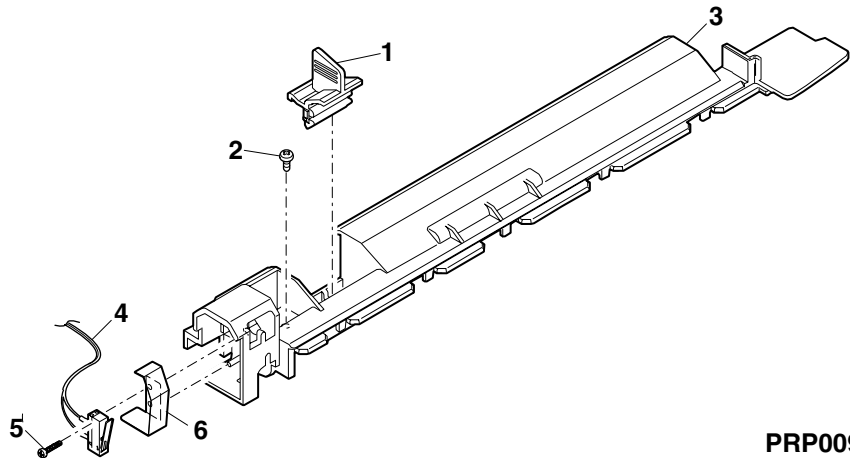


PRP00965

16 Single manual paper feeding cover unit (AR-122E/152E)

NO.	PARTS CODE	PRICE RANK	NEW MARK	PART RANK	DESCRIPTION
1	CCLEZ0005RS51	AQ		E	Charger cleaner unit
2	XEBSE30P08000	AA		C	Screw(3×8)
3	PCOVP0012QSJ1	AH		C	Single upper cover
4	CSW-M0016RS51	AG		E	Side door detect switch unit
5	XEPSD20P10000	AA		C	Screw(2×10)
6	MSPRP0110QSZ1	AD		C	Door switch spring

16 Single manual paper feeding cover unit (AR-122E/152E)

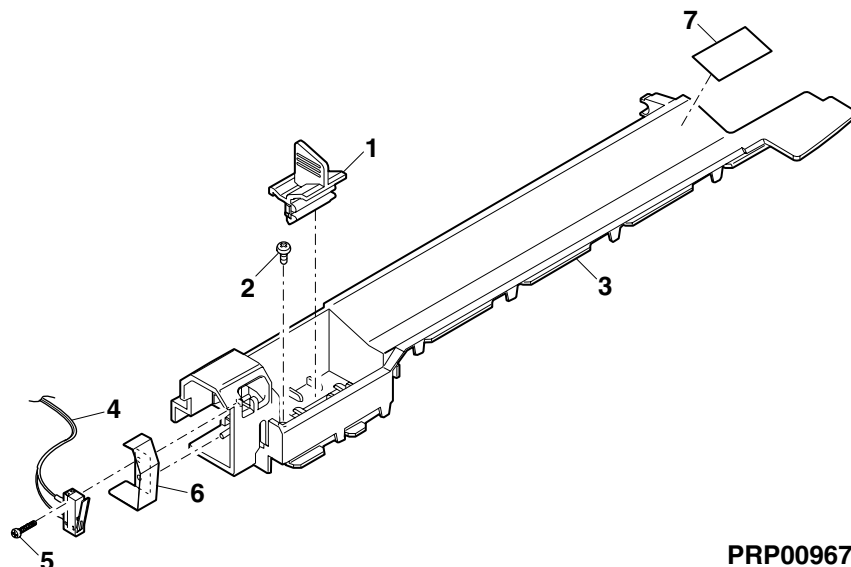


PRP00966

17 Multi manual paper feeding cover unit (AR-153E/157E)

NO.	PARTS CODE	PRICE RANK	NEW MARK	PART RANK	DESCRIPTION
1	CCLEZ0005RS51	AQ		E	Charger cleaner unit
2	XEBSE30P08000	AA		C	Screw(3×8)
3	PCOVP0023QSJ1	AH		D	Multi upper cover
4	CSW-M0016RS51	AG		E	Side door detect switch unit
5	XEPSD20P10000	AA		C	Screw(2×10)
6	MSPRP0110QSZ1	AD		C	Door switch spring
7	PSHEZ0075QSZZ	AC		C	MB upper guide sheet

17 Multi manual paper feeding cover unit (AR-153E/157E)

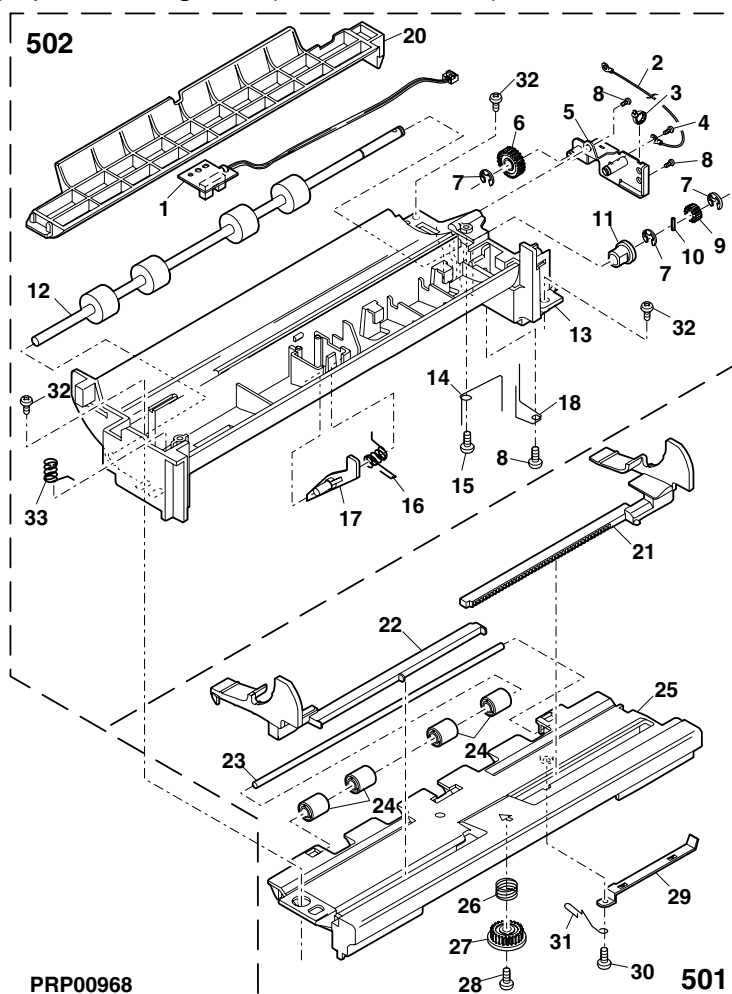


PRP00967

# 18 Single manual paper feeding unit (AR-122E/152E)

NO.	PARTS CODE	PRICE RANK	NEW MARK	PART RANK	DESCRIPTION
1	CPWBF0116RS54	AP		E	MFD sensor PWB
2	DHAI-0295QSZZ	AC	N	C	Manual feeding earth harness
3	LBNDJ0013FCZ1	AA		C	Wire band
4	XHBSE30P06000	AA		C	Screw(3x6)
5	CPLTM0023QS02	AF		C	SB plate 1
6	NGERH0972FCZZ	AB		C	Gear(27T)
7	XRESP40-06000	AA		C	E-ring
8	XEBSE30P08000	AA		C	Screw(3x8)
9	NGERH0990FCZZ	AB		C	Gear(16T)
10	XPSSJ20-07000	AA		C	Spring pin(φ2-7)
11	NBRGP0562FCZZ	AD		C	Bearing
12	NROLR0016QSZZ	AT		C	MF transport roller
13	LFRM-0006QSJZ	AN	N	D	Single manual feed frame
14	MSPRC0039QSZ1	AC		C	Earth spring
15	XEBSD30P06KS0	AA		C	Screw(3x6KS)
16	MSPRC0038QSZ1	AC		C	Actuator spring
17	MLEVP0007QSZZ	AD		C	Actuator
18	MSPRC0080QSZZ	AB		C	SB transport earth spring
20	PGIDM0014QSJZ	AF		C	DUP upper guide
21	PGIDM0013QSJZ	AF	N	C	SB side guide R
22	PGIDM0012QSJZ	AF	N	C	SB side guide F
23	NSFTZ0007QSZ1	AG		C	Roller shaft
23	NSFTZ0007QSZZ	AG	N	C	Roller shaft
24	NROLP1122FCZZ	AF		C	PS upper roller
25	LFRM-0007QSJ2	AL	N	D	Single manual feed lower frame
26	MSPRC0036QSZ1	AB		C	MF spring
27	NGERH0021QSZZ	AD		C	Manual feeding gear
28	XEPSD30P06X00	AA		C	Screw(3x6X)
29	MSPRP0079QSZZ	AD		C	SB earth plate spring
30	XEBSE30P06000	AA		C	Screw(3x6)
31	MSPRD0108QSZZ	AC		C	SB lower earth spring
32	XEBSE40P12000	AA		C	Screw(4x12)
33	MSPRC0109QSZZ	AC		C	Spring
501	CFRM-0007RS54	AX	N	E	SB manual feeding lower frame unit
502	CFRM-0006RS53	BB	N	E	Single manual paper feeding unit

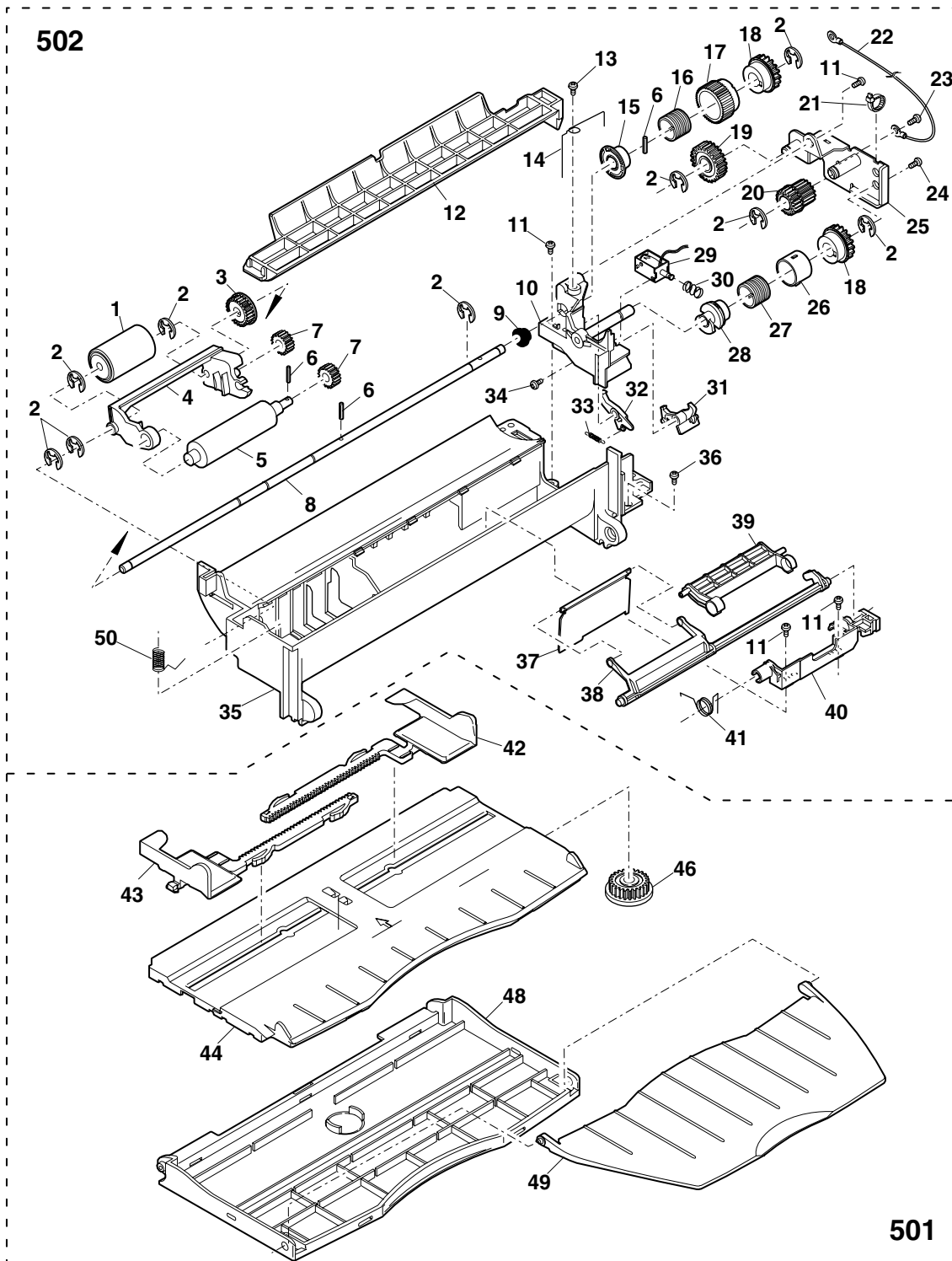
# 18 Single manual paper feeding unit (AR-122E/152E)



## 19

[illegible]

19 Multi manual paper feeding unit (AR-153E/157E)

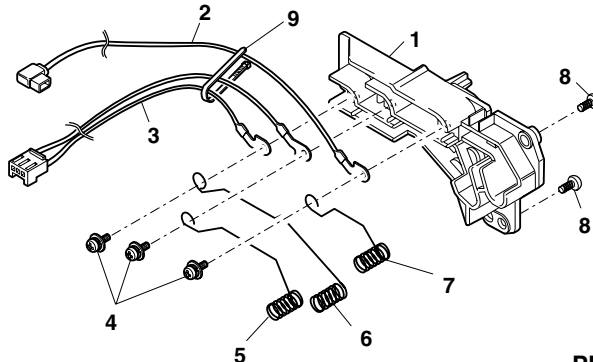


PRP00969

## 20 Socket holder unit

NO.	PARTS CODE	PRICE RANK	NEW MARK	PART RANK	DESCRIPTION
1	LHLDZ0009QSDZ	AG		C	HV interface holder
2	CHAI-0298RS51	AL	N	C	MC harness unit
3	CHAI-0273RS51	AN	N	C	GB-MCFB harness unit
4	XBPS30P06ES0	AA		C	Screw(3×6ES)
5	MSPRC0017QSZ1	AC		C	HV terminal spring
6	MSPRC0018QSZ1	AC		C	HV terminal spring
7	MSPRC0016QSZ1	AC		C	HV terminal spring
8	XEBSD30P08000	AA		C	Screw(3×8)
9	LBNDJ0013FCZ1	AA		C	Wire band

## 20 Socket holder unit

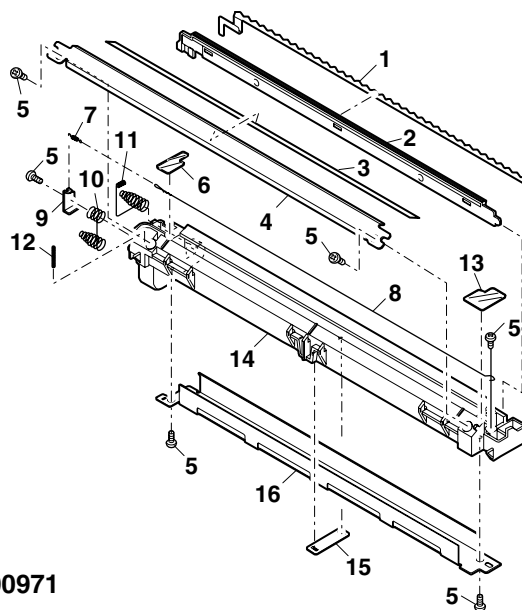


## 21 TC case unit

PRP00970

NO.	PARTS CODE	PRICE RANK	NEW MARK	PART RANK	DESCRIPTION
1	PSHEZ0018QSZZ	AF		C	Discharge plate sheet
2	PGIDM0011QSZZ	AE		C	Separator guige
3	PSHEP0019QSZ1	AC		C	TC sheet
4	PGIDH0025QSZ1	AG		C	TC front guide
5	XEBSD30P06000	AA		C	Screw(M3×6)
6	PSHEP0021QSZZ	AA		C	TC cover sheet R
7	MSPRT0513FCZ1	AA		C	MC tension spring
8	DWIR-0466CSZZ	BG		B	Charger wire
9	QSLP-0007QSZZ	AC		C	TC electrode plate
10	MSPRC0027QSZZ	AC		C	TC electrode spring
11	MSPRC0028QSZZ	AC		C	BC electrode spring
12	MSPRC0051QSZ1	AA		C	Front guide earth spring
13	PSHEP0020QSZZ	AB		C	TC cover sheet F
14	LHLDZ0010QSZ1	AL		C	TC holder
15	LFI-X-0004QSZZ	AC		C	Holer fixing plate
16	PCASZ0002QSZZ	AL		D	TC case
	(Unit)				
901	CHLDZ0010RS52	AU		E	Transcription holder unit

## 21 TC case unit

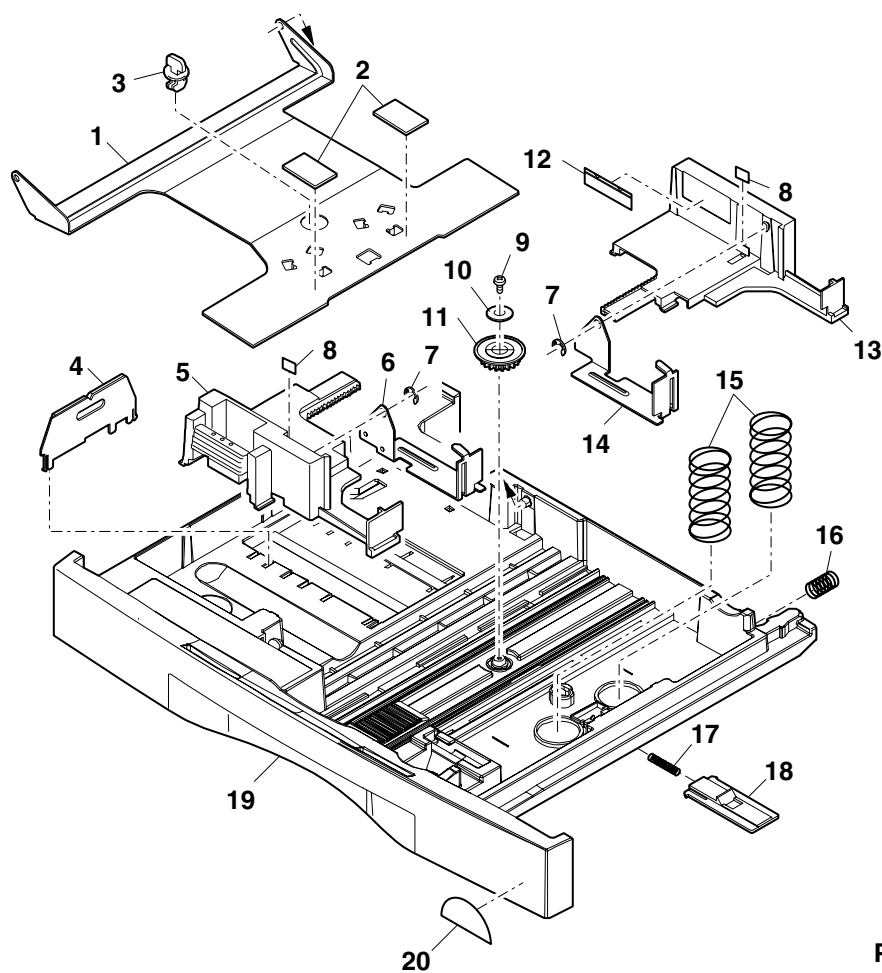


PRP00971

## 22 250 sheets tray

NO.	PARTS CODE	PRICE RANK	NEW MARK	PART RANK	DESCRIPTION
1	LPLTM5106FCZZ	AR		C	Turning plate 250
2	PSHEZ4142FCZZ	AC		C	Rotation plate sheet
3	LHLDW1226FCZZ	AB		C	Turn fasner
4	LPLTM2642FCGZ	AD		C	Tray rear plate
5	LPLTP5107FCZZ	AH		C	250 tray side plate F
6	PTME-0255FCZZ	AG		C	250 Tray pawl F
7	XRESP40-06000	AA		C	E-ring
8	PSHEP0061QSZZ	AA		C	Tray guide sheet
9	XEBSE30P08000	AA		C	Screw(3x8)
10	LX-WZ2028SCZZ	AA		C	Washer(φ12)
11	NGERH0193FCZZ	AB		C	Manual feeding gear
12	TLABZ3568FCZZ	AB		D	Indication label
13	LPLTP5108FCZZ	AH		C	250 tray side plate R
14	PTME-0256FCZZ	AG		C	250 Tray pawl R
15	MSPRC0108QSZZ	AC		C	250 Tray spring
16	MSPRC1873FCZ1	AB		C	Tray spring
17	MSPRC1145FCZZ	AA		C	Stopper spring
18	LSTPP0161FCZZ	AB		C	Rotation plate stopper
19	GCASP0001QSJ2	AZ	N	D	250 Tray case
20	TLABZ4047FCZZ	AC		C	Enagy star label (U.S.A,Australia,New zealand)
	(Unit)				
901	CCASP0001RS55	BF	N	E	250 Tray unit(Except No.20)

## 22 250 sheets tray

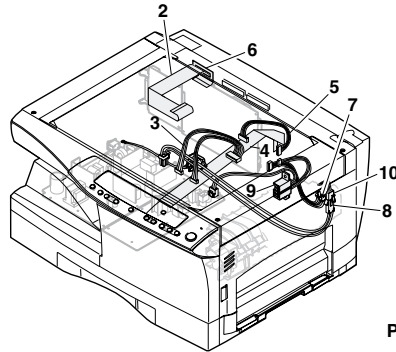


PRP00972

## 23 Harness

NO.	PARTS CODE	PRICE RANK	NEW MARK	PART RANK	DESCRIPTION
2	DHAI-0268QSZZ	AZ		C	CCD-MCU harness (Other Countries)
	DHAI-0268QSZ1	AH	N	C	CCD-MCU harness (Europe)
3	DHAI-0294QSZZ	AK	N	C	Center frame harness
4	DHAI-0285QSZZ	AK	N	C	OP-MCU harness
5	DHAI-0296QSZZ	AK	N	C	Main motor harness
6	PSHEZ0390QSZZ	AL	N	C	PWB holder sheet
7	DHAI-0287QSZZ	AF	N	C	PPD2 interface harness
8	DHAI-0274QSZZ	AG		C	HL harness 1 (100V Series)
	DHAI-0276QSZZ	AL		C	HL harness 1 (200V Series)
9	DHAI-0271QSZZ	AP		C	DSV harness
10	DHAI-0278QSZ1	AK		C	HL harness 2 (100V Series)
	DHAI-0280QSZ1	AH	N	C	HL harness 2 (200V Series)

## 23 Harness

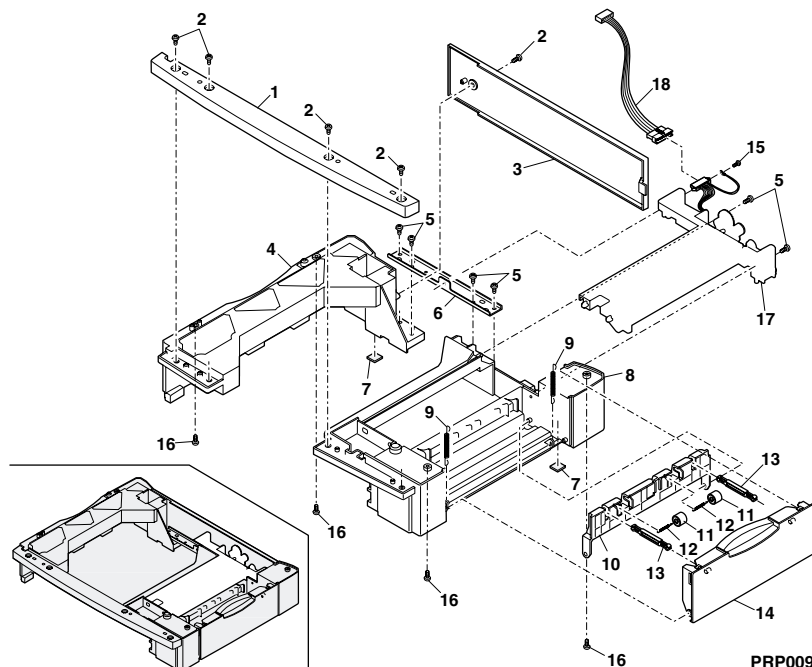


PRP00973

## 24 2ND frame unit (AR-157E)

NO.	PARTS CODE	PRICE RANK	NEW MARK	PART RANK	DESCRIPTION
1	GCOVA0005QSJZ	AL		D	Front cover
2	XEBSE40P12000	AA		C	Screw(4×12)
3	GCOVA0006QSJZ	AN		D	Rear cover
4	PGIDM0016QSJZ	AY		C	Guide L
5	XEBSD40P12000	AA		C	Screw(4×12)
6	LPLTM0036QSZZ	AF		C	2ND joint plate R
7	GLEGG0064FCZZ	AC		C	Rubber foot
8	PGIDM0015QSJZ	AY		C	Guide R
9	MSPRC2544FCZZ	AC		C	2ND transport cover spring
10	GCOVA0007QSZZ	AK		D	Transport cover
11	NROLP1060FCZZ	AF		C	U-turn roller
12	MSPRT0112QSZZ	AC		C	Transport collar spring
13	MARMP0012QSZZ	AD		C	2ND door arm
14	GCOVA0008QSJZ	AK		D	Right cover
15	XHBSD40P08000	AA		C	Screw(4×8)
16	XEBSE40P16000	AA		C	Screw(3×16)
17	CFRM-0009RS54	BF		E	2ND paper feeding unit
18	DHAI-0306QSZZ	AG		C	2CS harness

## 24 2ND frame unit (AR-157E)

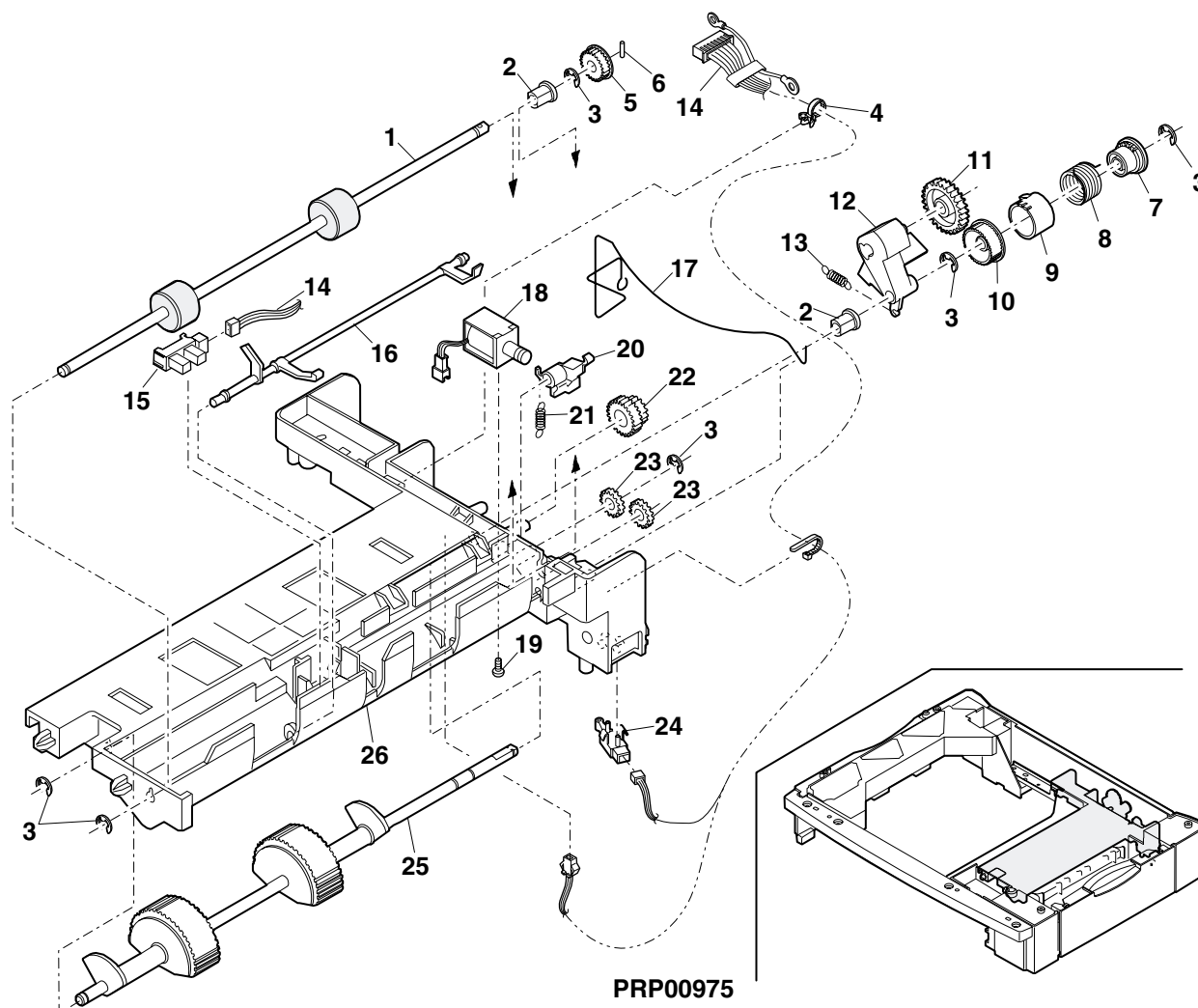


PRP00974

## 25 2ND paper feeding unit (AR-157E)

NO.	PARTS CODE	PRICE RANK	NEW MARK	PART RANK	DESCRIPTION
1	NROL P0019QS Z1	AP		C	Transport roller
2	NBRGC0016QS Z Z	AD		C	Bearing(B-F5-13)
3	XRESP40-06000	AA		C	E-ring
4	LBNDJ0013FC Z1	AA		C	Wire band
5	NGERH0992FC Z Z	AB		C	Gear(20T)
6	XPSSP20-07000	AA		C	Spring pin(φ2-7)
7	LBOSZ1031FC Z Z	AC		C	Clutch boss
8	MSPRC0161QS Z Z	AF		C	Clutch spring
9	PPiPP0007QS Z Z	AD		C	Clutch sleeve
10	NGERH1132FC Z Z	AH		C	Clutch gear(29T)
11	NGERH1207FC Z Z	AF		C	2ND joint gear(40T)
12	MARMP0229FC Z Z	AE		C	2ND joint arm
13	MSPRC2545FC Z Z	AB		C	2ND joint arm spring
14	DHAi-0306QS Z Z	AG		C	2CS harness
15	VHPGP1A71A1-1	AG		B	Photo transistor(GP1A71A1)
16	MLEVP0033QS Z Z	AF		C	PPDI actuator
17	MSPRD0058QS Z Z	AG		C	Earth spring
18	RPLU-0010QS Z Z	AN		B	PF solenoid
19	XHBSD30P06000	AA		C	Screw(3×6)
20	PTME-0008QS Z Z	AD		C	PF clutch pawl
21	MSPRC2546FC Z Z	AB		C	2ND clutch pawl spring
22	NGERH0041QS Z Z	AF		C	Gear(18/26T)
23	NGERH0990FC Z Z	AB		C	Gear(16T)
24	QSW-B0003QS Z Z	AF		B	Tray detect switch
25	CRÖLP0015QS01	AU		C	Paper feeding roller
26	LFRM-0009QS Z2	AQ		D	Paper feeding frame
	(Unit)				
901	CFRM-0009RS54	BF		E	2ND paper feeding unit

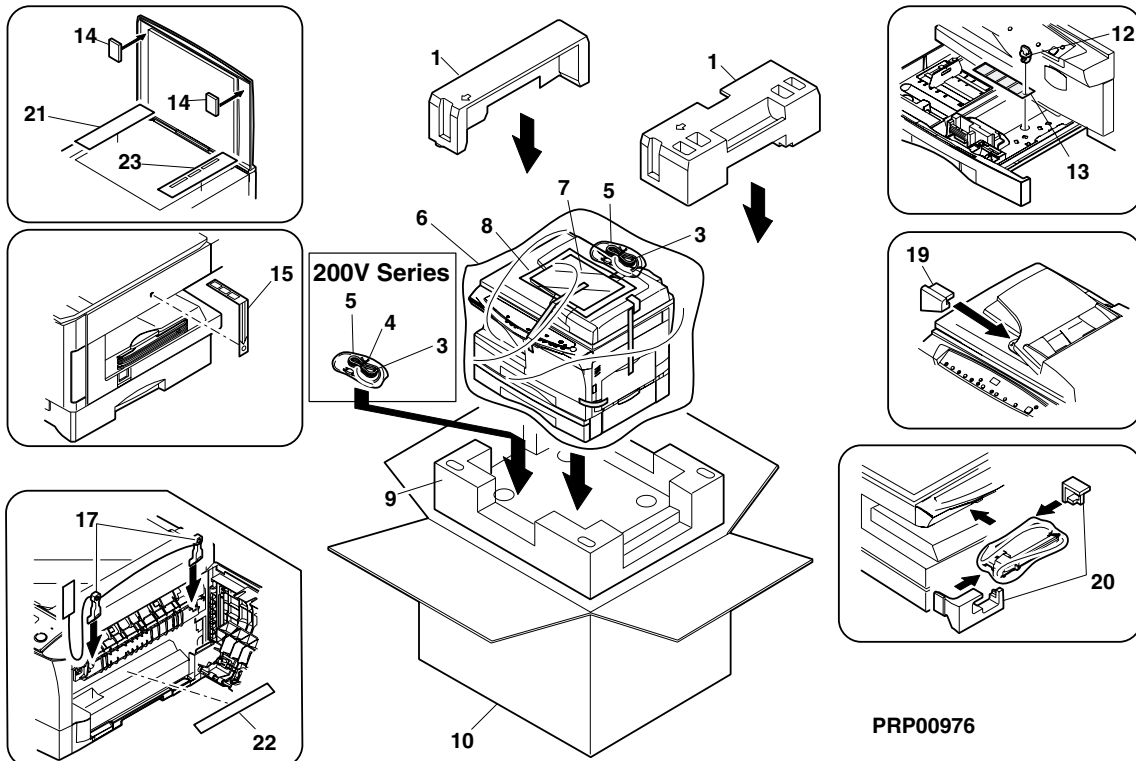
## 25 2ND paper feeding unit (AR-157E)



## 26 Packing material & accessories

NO.	PARTS CODE	PRICE RANK	NEW MARK	PART RANK	DESCRIPTION
1	SPAKA0408QSZZ	AN		D	Top packing OC (AR-122E/152E)
	SPAKA0429QSZZ	AM	N	D	Top packing OC (AR-153E)
	SPAKA0410QSZZ	AQ		D	Top packing DSPF (AR-157E)
3	QACCE622QCPZ	AQ		B	AC cord (AR-122E/152E U.Kingdom,Switzerland)
	QACCV6621JHPZ	*	N	B	AC cord (AR-122E/152E Other Countries)
	QACCB7521QCZZ	AS		B	AC cord (AR-153E Special Country,South africa,India)
	QACCB7622QCN1	AZ		B	AC cord (AR-153E Hong kong)
	QACCB623QCPZ	AY	N	B	AC cord (AR-153E Other Countries)
	QACCF7620QCZZ	AX		B	AC cord (AR-153E Syngapore,Malaysia,Indonesia)
	QACCL7622QCPZ	AR		B	AC cord (AR-153E Australia,New zealand)
	QACCD761AQCZZ	BE		B	AC cord (100V Series)
4	UBNDA0001FCZZ	AA		C	AC cable band
5	SSAKA5003CCZZ	AA		D	Vinyl bag(140×260mm)
6	SSAKZ0002QSZZ	AF		D	Body vinyl bag
7	TINSA0810QSZZ	AS	N	D	Operation manual (Arabic)
	TINSE0778QSZZ	AX	N	D	Operation manual (English)
	TINSE0800QSZZ	AR	N	D	Operation manual (English(U.S.A))
	TINSE0817TSZZ	*	N	D	Operation manual (English)
	TINSZ0770TSZZ	*	N	D	Operation manual (German,French,Italian,Dutch,Spanish,Switzerland)
	TINSZ0771TSZZ	*	N	D	Operation manual (English,French,Hungarian,Polish,Russian)
	TINSZ0818TSZZ	*	N	D	Operation manual (Swedish,Finnish,Norwegian,Danish)
	GCOVZ0149FCZZ	AU		D	Dust cover A3A (AR-122E Except Australia,New zealand,Syngapore,Malaysia,Indonesia, Hong kong,India,South africa)
8	TCADZ0049QSZZ	AH		D	Installation card (Europe)
	SSAKA2347QCZZ	AB		D	Vinyl bag(240×300mm)
9	SPAKA0405QSZZ	AN		D	Bottom packing (AR-122E/152E)
	SPAKA0406QSZZ	AS		D	Bottom packing (AR-153E)
	SPAKA0407QSZZ	AS		D	Bottom packing (AR-157E)
10	SPAKC0402TS13	*	N	D	Packing case (AR-122E Europe)
	SPAKC0402RS21	AU	N	D	Packing case (AR-122E Other Countries)
	SPAKC0402RS22	AU	N	D	Packing case (AR-122E Thailand,Syngapore,Malaysia,Indonesia,India)
	SPAKC0402TS14	*	N	D	Packing case (AR-152E)
	SPAKC0404RS15	AX	N	D	Packing case (AR-157E)
	SPAKC0428RSZZ	AW	N	D	Packing case (AR-153E)
12	LHLDW1226FCZZ	AB		C	Turn fasner
13	TTAG-0002QSZZ	AB		D	Tray rotation tag
14	SPAKA0051RSZZ	AC		D	OC packing (AR-122E/152E/153E)
	SPAKA0163RSZZ	AC		D	OC packing(DSPF) (AR-157E)
15	TTAG-0006QSZZ	AE	N	D	Scanner fixing tag JAG
17	CLEVP0016QS01	AL		C	Pressure block lever
19	SPAKA0421QSZZ	AC		D	Middle tray packing (AR-157E)
20	SPAKA0411QSZZ	AE		D	Accessories Add A
21	SPAKA5116FCZZ	AB		D	SPF protect sheet (AR-157E)
22	TCAUH0007QSZZ	AD		D	Laser caution label
23	SPAKA0432QSZZ	AC	N	D	SPF protect sheet JAG (AR-157E)

## 26 Packing material & accessories



## 27 Operation PWB

NO.	PARTS CODE	PRICE RANK	NEW MARK	PART RANK	DESCRIPTION
1	QCNCM0861FCZZ	AB		C	Connector(3pin) [CN302]
2	QCNCW1132LC1H	AD		C	Connector(18pin) [CN301]
3	QSW-P0001ESZZ	AC		B	Tact swtch(SKQNA010) [MAGK,ZDWK,CLK,ZUPK,OLK]
	QSW-P0001ESZZ	AC		B	Tact swtch(SKQNA010) [10UPK,1UPK,EXUPK,EXDWK]
	QSW-P0001ESZZ	AC		B	Tact swtch(SKQNA010) [EXMODK,CRSK,PSW,SCNK]
	QSW-P0001ESZZ	AC		B	Tact swtch(SKQNA010) (AR-157E)[DUPK]
	QSW-P0001ESZZ	AC		B	Tact swtch(SKQNA010) (Except AR122E/152E)[BPK]
4	VCCCY1HH201J	AA		C	Capacitor(50WV 200pF) [C317,C319,C326,C327]
5	VCEAJU1CW476M	AB		C	Capacitor(16WV 47μF) [C301]
6	VCKYCY1CB104K	AB		C	Capacitor(16WV 0.1μF) [C311,C323]
7	VCKYCY1HB102K	AA		C	Capacitor(50WV 1000pF) [C302-310,312-316]
8	VCKYCY1HB223K	AC		C	Capacitor(50WV 0.022μF) [C318,325]
9	VHDDSS133// -1	AA		B	Diode(1SS133) [D301-310]
10	VHILC7935// -1	AN		B	IC(LC7935) [IC303]
11	VH174HC151M-1	AD		B	IC(74HC151M) [IC301,IC302]
12	VHP1LHEE-002A	AC		B	LED(Red)(1LHEE-002A) [TPL,DPL,JPL,MPL]
	VHP1LHEE-002A	AC		B	LED(Red)(1LHEE-002A) (Except AR122E/152E)[SJAL]
	VHP1LHLE-002A	AC		B	LED(Green)(LTL-1LHLE-002A) [PE,ME,RPL,AE,ZPL]
	VHP1LHLE-002A	AC		B	LED(Green)(LTL-1LHLE-002A) [EXD,EXN,EXL,CS1L]
	VHP1LHLE-002A	AC		B	LED(Green)(LTL-1LHLE-002A) [BPL,3RE,2RE,1RE]
	VHP1LHLE-002A	AC		B	LED(Green)(LTL-1LHLE-002A) [NOR,1ENR,2ENR,PML]
	VHP1LHLE-002A	AC		B	LED(Green)(LTL-1LHLE-002A) [ONL,SCNL]
	VHP1LHLE-002A	AC		B	LED(Green)(LTL-1LHLE-002A) (AR-157E)[DAA1,DAA2,DU21,DU22]
	VHP1LHLE-002A	AC		B	LED(Green)(LTL-1LHLE-002A) (Except AR122E/152E)[SPFL,CS2L]
	VHP1LHLE-002A	AC		B	LED(7SEGMENT)(LTC-3650AG-02J) [LEDM]
14	VRS-CY1JD101J	AA		C	Resistor(1/16W 100Ω ±5%) [R302,308,309,310,312]
	VRS-CY1JD101J	AA		C	Resistor(1/16W 100Ω ±5%) [R313,314,318,319,321]
	VRS-CY1JD101J	AA		C	Resistor(1/16W 100Ω ±5%) [R322,324,327,336]
	VRS-CY1JD102J	AA		C	Resistor(1/16W 1.0KΩ ±5%) [R317,335,338,339]
16	VRS-CY1JD102J	AA		C	Resistor(1/16W 1.0KΩ ±5%) [R340,352,357,360]
	VRS-CY1JD121J	AA		C	Resistor(1/16W 120Ω ±5%) [R328-334,341-349,361]
17	VRS-CY1JD151J	AA		C	Resistor(1/16W 150Ω ±5%) [R350,351,358]
18	VRS-CY1JD152J	AA		C	Resistor(1/16W 1.5KΩ ±5%) [R304,359]
19	VRS-CY1JD471J	AA		C	Resistor(1/16W 470Ω ±5%) [R353,354]
21	VRS-CY1JD472J	AA		C	Resistor(1/16W 4.7KΩ ±5%) [R301,303,305,306,307]
	VRS-CY1JD472J	AA		C	Resistor(1/16W 4.7KΩ ±5%) [R311,315,316,320,323]
	VRS-CY1JD472J	AA		C	Resistor(1/16W 4.7KΩ ±5%) [R325,326,337,355]
22	VRS-CY1JD511J	AA		C	Resistor(1/16W 510Ω ±5%) [R356,362]
23	RH-TX0003ESZZ	AC		B	Digital transistor(KRA225S) [Q301,302,303]
	(Unit)				
901	CPWBF0113QSE8	BB	N	E	Operation PWB (AR-122E/152E)
	CPWBF0113QSE9	BB	N	E	Operation PWB (AR-153E)
	CPWBF0113QSF0	BB	N	E	Operation PWB (AR-157E)

## 28 MCU PWB

NO.	PARTS CODE	PRICE RANK	NEW MARK	PART RANK	DESCRIPTION
1	QCNCM0079QSZZ	AC		C	Connector(2pin) [CN116]
2	QCNCM0923FC14	AE		C	Connector(14pin) (AR-153E/157E)[CN115]
3	QCNCM0923FC18	AF		C	Connector(18pin) [CN119]
4	QCNCM0923FC24	AF		C	Connector(24pin) [CN101]
	QCNCM0923FC24	AF		C	Connector(24pin) (AR-153E/157E)[CN122]
5	QCNCW0948FCZ5	AC		C	Connector(5pin) (AR-153E/157E)[CN114]
6	QCNCM1005MCZZ	AB		C	Connector(2pin) [CN124]
7	QCNCM2401SC0C	AB		C	Connector(3pin) [CN111]
8	QCNCM2401SC0D	AC		C	Connector(4pin) [CN106A,CN103]
9	QCNCM2401SC0E	AC		C	Connector(5pin) [CN123]
10	QCNCM7014SC0C	AA		C	Connector(3pin) [CN113,CN110]
	QCNCM7014SC0C	AA		C	Connector(3pin) (AR-153E/157E)[CN109]
11	QCNCM7014SC0D	AB		C	Connector(4pin) [CN112]
12	QCNCM7014SC0E	AB		C	Connector(5pin) [CN120]
13	QCNCM7014SC0F	AB		C	Connector(6pin) [CN125]
14	QCNCMP0340QCZZ	AC		C	Connector(3pin) [CN108]
15	QCNCMP0341QCZZ	AC		C	Connector(3pin) [CN117]
16	QCNCW0024QSZZ	AF		C	Connector(32pin) [CN105]
17	QCNCW0078QSZZ	AF		C	Connector(35pin) [CN104]
19	QCNCW1124LC0H	AC		C	Connector(8pin) [CN107]
20	QCNCW1124LC1H	AD		C	Connector(18pin) [CN102]
21	QSOCZ0002QSZZ	AD		C	IC socket(8pin) [For IC102]
22	RCILZ0015QSZZ	AD		C	Coil [L129]
23	RCRSP0016QSZZ	AD		B	Cristal(19.6608MHz) [X101]
24	RCRUB0013QSZZ	AN		B	Cristal(24MHz) [X102]
25	RCRUB0016QSZZ	AN		B	Cristal(13.9867MHz) [X103]
26	RFILZ0004QSZZ	AM		C	Filter(ZJSR5101-223) [L101,L113,L123,L124]
	RFILZ0004QSZZ	AM		C	Filter(ZJSR5101-223) [L125,L126,L127]
27	RH-DX0001ESZZ	AC		B	Diode(11EQS06-TA1B2) [D139]

# 28 MCU PWB

NO.	PARTS CODE	PRICE RANK	NEW MARK	PART RANK	DESCRIPTION
28	RH-DZ0016FCZZ	AB		B	Diode(MA700) [D101]
29	RH-IX0001QSZZ	BD		B	IC(MT48LC8M16ATG-8E) (AR-153E/157E)[IC110]
30	RH-IX0002QSZZ	AZ		B	IC(MT48LC4M16ATG-8E) (AR-122E/152E)[IC110]
31	RH-IX0020QSZZ	AS		B	IC(UT61L1024JC-15) [IC112]
32	RMPTW4100QCJJ	AA		B	Block resistor(10 $\Omega$ ×4) [BR156,BR157,BR158]
33	RMPTW4102QCJJ	AB		B	Block resistor(1.0K $\Omega$ ×4) [BR160,BR161,BR162,BR163]
34	RMPTW4103QCJJ	AB		B	Block resistor(10K $\Omega$ ×4) [BR101,BR102,BR103,BR104,BR105]
	RMPTW4103QCJJ	AB		B	Block resistor(10K $\Omega$ ×4) [BR106,BR107,BR108,BR109,BR110]
	RMPTW4103QCJJ	AB		B	Block resistor(10K $\Omega$ ×4) [BR111,BR112,BR114,BR115,BR117]
	RMPTW4103QCJJ	AB		B	Block resistor(10K $\Omega$ ×4) [BR133,BR135,BR137,BR139,BR145]
	RMPTW4103QCJJ	AB		B	Block resistor(10K $\Omega$ ×4) [BR146,BR148,BR150,BR152,BR153]
	RMPTW4103QCJJ	AB		B	Block resistor(10K $\Omega$ ×4) [BR154,BR155,BR159]
35	RMPTW4330QCJJ	AB		B	Resistor arrey(33 $\Omega$ ×4 1/32W $\pm$ 5%) [BR116,BR118,BR119,BR120,BR121]
	RMPTW4330QCJJ	AB		B	Resistor arrey(33 $\Omega$ ×4 1/32W $\pm$ 5%) [BR122,BR123,BR124,BR125,BR126]
	RMPTW4330QCJJ	AB		B	Resistor arrey(33 $\Omega$ ×4 1/32W $\pm$ 5%) [BR127,BR128,BR129,BR130,BR134]
	RMPTW4330QCJJ	AB		B	Resistor arrey(33 $\Omega$ ×4 1/32W $\pm$ 5%) [BR136,BR138,BR140,BR141,BR131]
	RMPTW4330QCJJ	AB		B	Resistor arrey(33 $\Omega$ ×4 1/32W $\pm$ 5%) [BR132,BR142,BR143,BR144,BR147]
	RMPTW4330QCJJ	AB		B	Resistor arrey(33 $\Omega$ ×4 1/32W $\pm$ 5%) [BR149,BR151]
36	TLABZ4201FCZZ	AC		D	Version label
37	VCCCCZ1HH101J	AA		C	Capacitor(50WV 100pF) [C104,C105,C190,C191,C192]
38	VCCCCZ1HH120J	AA		C	Capacitor(50WV 12pF) [C106,C165,C167]
39	VCCCCZ1HH220J	AA		C	Capacitor(50WV 22pF) [C102,C103]
40	VCCCCZ1HH330J	AA		C	Capacitor(50WV 33pF) [C186,C188,C194,C302]
41	VCCCCZ1HH470J	AA		C	Capacitor(50WV 47pF) [C126,C315,C316,C317,C318]
	VCCCCZ1HH470J	AA		C	Capacitor(50WV 47pF) [C319,C320,C321,C166]
	VCEAGA1CW105M	AA		C	Capacitor(16WV 1.0 $\mu$ F) [C206]
43	VCEAGA1CW106M	AA		C	Capacitor(16WV 10 $\mu$ F) [C109]
44	VCEAGA1CW226M	AB		C	Capacitor(16WV 22 $\mu$ F) [C174,C286,C287,C322]
45	VCEAGA1CW476M	AB		C	Capacitor(16WV 47 $\mu$ F) [C139]
	VCEAGA1CW476M	AB		C	Capacitor(16WV 47 $\mu$ F) (AR-153E/157E)[C217,C219]
46	VCEAGA1EW476M	AA		C	Capacitor(25WV 47 $\mu$ F) [C284]
47	VCEAGA1VW106M	AA		C	Capacitor(35WV 10 $\mu$ F) [C212]
48	VCEAGA1VW476M	AB		C	Capacitor(35WV 47 $\mu$ F) [C208,C276,C282,C299,C300]
49	VCKYCY1HB104K	AA		C	Capacitor(50WV 0.10 $\mu$ F) [C277,C313,C314,C209,C210]
	VCKYCY1HB104K	AA		C	Capacitor(50WV 0.10 $\mu$ F) [C213,C334,C335,C301]
50	VCKYCZ1CB223K	AB		C	Capacitor(16WV 0.022 $\mu$ F) [C125,C163,C169,C197,C200]
51	VCKYCZ1CF104Z	AB		C	Capacitor(16WV 0.10 $\mu$ F) [C101,C107,C108,C110,C111]
	VCKYCZ1CF104Z	AB		C	Capacitor(16WV 0.10 $\mu$ F) [C112,C113,C114,C115,C124]
	VCKYCZ1CF104Z	AB		C	Capacitor(16WV 0.10 $\mu$ F) [C127,C128,C129,C130,C131]
	VCKYCZ1CF104Z	AB		C	Capacitor(16WV 0.10 $\mu$ F) [C132,C133,C134,C135,C136]
	VCKYCZ1CF104Z	AB		C	Capacitor(16WV 0.10 $\mu$ F) [C137,C138,C140,C141,C142]
	VCKYCZ1CF104Z	AB		C	Capacitor(16WV 0.10 $\mu$ F) [C143,C144,C145,C146,C147]
	VCKYCZ1CF104Z	AB		C	Capacitor(16WV 0.10 $\mu$ F) [C148,C149,C150,C151,C152]
	VCKYCZ1CF104Z	AB		C	Capacitor(16WV 0.10 $\mu$ F) [C153,C154,C155,C156,C157]
	VCKYCZ1CF104Z	AB		C	Capacitor(16WV 0.10 $\mu$ F) [C158,C159,C160,C161,C162]
	VCKYCZ1CF104Z	AB		C	Capacitor(16WV 0.10 $\mu$ F) [C164,C168,C170,C171]
52	VCKYCZ1HB102K	AA		C	Capacitor(50WV 1000pF) [C261,C262,C263,C264,C265]
	VCKYCZ1HB102K	AA		C	Capacitor(50WV 1000pF) [C266,C278,C279,C280,C281]
	VCKYCZ1HB102K	AA		C	Capacitor(50WV 1000pF) [C290,C291,C292,C293,C294]
	VCKYCZ1HB102K	AA		C	Capacitor(50WV 1000pF) [C295,C296,C297,C298,C303]
	VCKYCZ1HB102K	AA		C	Capacitor(50WV 1000pF) [C304,C305,C306,C307,C309]
	VCKYCZ1HB102K	AA		C	Capacitor(50WV 1000pF) [C310,C311,C312]
	VCKYCZ1HB222K	AA		C	Capacitor(50WV 2200pF) [C211,C214,C218,C222]
54	VCKYCZ1HB821K	AC		C	Capacitor(50WV 820pF) [C201,C202,C203,C204]
55	VHDDSS133//--1	AA		B	Diode(1SS133) [D104,D120,D124,D127]
56	VHDKDS121++-1	AC		B	Diode(KDS121) [D116,D117,D118,D121,D122]
	VHDKDS121++-1	AC		B	Diode(KDS121) [D123,D125,D126,D128,D129]
	VHDKDS121++-1	AC		B	Diode(KDS121) [D130,D131,D132,D133]
	VHDKDS121++-1	AC		B	Diode(KDS121) [D134,D135,D136,D137]
57	VHDKDS226++-1	AC		B	Diode(KDS226) [D102,D103,D119,D138,D140,D143]
58	VHEMTZJ22B/-1	AA		B	Zener diode(MTJZ22B) (AR-153E/157E)[D109]
59	VHi28F4BVEB85	AX		B	IC(28F4BVEB85) [IC111]
60	VHi74HC151M-1	AD		B	IC(74HC151M) [IC114,IC115]
	VHi74HC151M-1	AD		B	IC(74HC151M) (AR-153E/157E)[IC117]
61	VHiBA6920FP-1	AL		B	IC(BA6920FP) [IC129]
62	VHiD65001AF-1	AG		B	IC(D65001AF) [IC119,IC121]
63	VHiD65503F+-1	AG		B	IC(D65503F) [IC124,IC125]
64	VHiEES02L400P	AG		B	IC(EES02L400P) [IC102]
65	VHiH8S2320+-1	AY		B	IC(H8S/2320) [IC103]
66	VHiHG73C1191C	BH		B	IC(HG73C1191C) [IC106]
67	VHiKA7805AP-1	AE		B	IC(KIA7805API) [IC130]
68	VHiKIA358F+-1	AE		B	IC(KIA358F) [IC122]
69	VHiKIA393F+-1	AE		B	IC(KIA393F) [IC120]
70	VHiL6219DS+-1	AN		B	IC(L6219DS) [IC127]
71	VHiLCX244WM-1	AG		B	IC(74LCX244WM) [IC118,IC113]
72	VHiM51957BFP1	AH		B	IC(M51957BFP1) [IC104]
73	VHiMTD1361F-1	AR		B	IC(MTD1361F) (AR-153E/157E)[IC128]
74	RH-IX0005ESZZ	AE		B	IC(IX0005ES) [IC131]
75	VHiNC7ST08M-1	AD		B	IC(NC7ST08M) [IC107]
76	VHiP2010ASR-1	AN		B	IC(P2010ASR) [IC101]

NO.	PARTS CODE	PRICE RANK	NEW MARK	PART RANK	DESCRIPTION
77	V H i T D 6 2 0 6 4 A F /	AM		B	IC(TD62064AF) (AR-153E/157E)[IC123,IC126]
78	V H i V H C T 2 4 4 M - 1	AG		B	IC(VHCT244M) [IC116]
79	V H V i C P N 3 8 / / - 1	AF		B	IC protector(ICPN38) [CP101,CP102,CP103]
80	V R D - H T 2 E Y 1 5 1 J	AA		C	Resistor(1/4W 150Ω ±5%) (AR-153E/157E)[R251]
81	V R D - C T 2 E Y 3 9 1 J	AA		C	Resistor(1/4W 390Ω ±5%) [R245,R246,R247,R253]
82	V R D - H T 2 E Y 4 7 2 J	AA		C	Resistor(1/4W 4.7KΩ ±5%) [R166]
83	V R N - V T 3 A T R 6 8 J	AC		C	Resistor(1W 0.68Ω ±5%) [R178,R177]
84	V R S - C Z 1 J D 0 0 0 J	AA		C	Resistor(1/16W 0Ω ±5%) [R102,R105,R106,R287]
85	V R S - C Z 1 J D 1 0 0 J	AA		C	Resistor(1/16W 10Ω ±5%) [R144,R145,R149,R267]
86	V R S - C Z 1 J D 1 0 1 J	AA		C	Resistor(1/16W 100Ω ±5%) [R120,R170,R202,R278]
87	V R S - C Z 1 J D 1 0 2 F	AA		C	Resistor(1/16W 1KΩ ±1%) [R154]
88	V R S - C Z 1 J D 1 0 2 J	AA		C	Resistor(1/16W 1.0KΩ ±5%) [R157,R181,R185,R195,R207]
	V R S - C Z 1 J D 1 0 2 J	AA		C	Resistor(1/16W 1.0KΩ ±5%) [R214,R216,R235,R236,R237]
	V R S - C Z 1 J D 1 0 2 J	AA		C	Resistor(1/16W 1.0KΩ ±5%) [R244,R187,R188,R282,R291]
89	V R S - C Z 1 J D 1 0 3 F	AA		C	Resistor(1/16W 10KΩ ±1%) [R117,R158,R173]
90	V R S - C Z 1 J D 1 0 3 J	AA		C	Resistor(1/16W 10KΩ ±5%) [R108,R110,R111,R112,R113]
	V R S - C Z 1 J D 1 0 3 J	AA		C	Resistor(1/16W 10KΩ ±5%) [R115,R118,R122,R123,R124]
	V R S - C Z 1 J D 1 0 3 J	AA		C	Resistor(1/16W 10KΩ ±5%) [R125,R126,R127,R128,R134]
	V R S - C Z 1 J D 1 0 3 J	AA		C	Resistor(1/16W 10KΩ ±5%) [R136,R137,R140,R141,R146]
	V R S - C Z 1 J D 1 0 3 J	AA		C	Resistor(1/16W 10KΩ ±5%) [R147,R148,R172,R187,R188]
	V R S - C Z 1 J D 1 0 3 J	AA		C	Resistor(1/16W 10KΩ ±5%) [R189,R190,R192,R193,R208]
	V R S - C Z 1 J D 1 0 3 J	AA		C	Resistor(1/16W 10KΩ ±5%) [R209,R210,R211,R212,R213]
	V R S - C Z 1 J D 1 0 3 J	AA		C	Resistor(1/16W 10KΩ ±5%) [R221,R222,R223,R224,R226]
	V R S - C Z 1 J D 1 0 3 J	AA		C	Resistor(1/16W 10KΩ ±5%) [R227,R228,R231,R233,R234]
	V R S - C Z 1 J D 1 0 3 J	AA		C	Resistor(1/16W 10KΩ ±5%) [R238,R242,R248,R249]
91	V R S - C Z 1 J D 1 0 5 F	AA		C	Resistor(1/16W 1.0MΩ ±1%) [R155]
92	V R S - C Z 1 J D 1 1 3 F	AA		C	Resistor(1/16W 11KΩ ±1%) [R114]
93	V R S - C Z 1 J D 1 2 2 F	AA		C	Resistor(1/16W 1.2KΩ ±1%) [R171]
94	V R S - C Z 1 J D 1 2 2 J	AA		C	Resistor(1/16W 1.2KΩ ±5%) [R201]
95	V R S - C Z 1 J D 1 5 2 J	AA		C	Resistor(1/16W 1.5KΩ ±5%) [R150,R151,R152,R153,R160]
	V R S - C Z 1 J D 1 5 2 J	AA		C	Resistor(1/16W 1.5KΩ ±5%) [R162,R163,R164,R165,R167]
	V R S - C Z 1 J D 1 5 2 J	AA		C	Resistor(1/16W 1.5KΩ ±5%) [R168,R179,R180]
96	V R S - C Z 1 J D 1 5 3 J	AA		C	Resistor(1/16W 15KΩ ±5%) [R240,R275]
97	V R S - C Z 1 J D 2 0 2 J	AA		C	Resistor(1/16W 2.0KΩ ±5%) [R184]
98	V R S - C Z 1 J D 2 0 3 J	AA		C	Resistor(1/16W 20KΩ ±5%) [R215,R217]
99	V R S - C Z 1 J D 2 2 0 J	AA		C	Resistor(1/16W 22Ω ±5%) [R107]
100	V R S - C Z 1 J D 2 4 1 J	AA		C	Resistor(1/16W 240KΩ ±5%) [R174,R175,R176]
101	V R S - C Z 1 J D 2 4 2 J	AA		C	Resistor(1/16W 2.4KΩ ±5%) [R198,R203]
102	V R S - C Z 1 J D 2 7 2 J	AA		C	Resistor(1/16W 2.7KΩ ±5%) [R218]
103	V R S - C Z 1 J D 3 0 1 J	AA		C	Resistor(1/16W 300Ω ±5%) [R169,R199]
104	V R S - C Z 1 J D 3 0 3 J	AA		C	Resistor(1/16W 30KΩ ±5%) [R182,R183]
105	V R S - C Z 1 J D 3 3 0 J	AA		C	Resistor(1/16W 33Ω ±5%) [R119,R254,R255,R256,R257]
	V R S - C Z 1 J D 3 3 0 J	AA		C	Resistor(1/16W 33Ω ±5%) [R258,R259,R260,R261,R262]
	V R S - C Z 1 J D 3 3 0 J	AA		C	Resistor(1/16W 33Ω ±5%) [R276,R277,R285,R121]
106	V R S - C Z 1 J D 3 3 2 J	AA		C	Resistor(1/16W 3.3KΩ ±5%) [R232]
107	V R S - C Z 1 J D 3 9 3 J	AA		C	Resistor(1/16W 39KΩ ±5%) [R211,R223,R226,R227]
108	V R S - C Z 1 J D 4 3 2 F	AA		C	Resistor(1/16W 4.3KΩ ±1%) [R159]
109	V R S - C Z 1 J D 4 7 1 J	AA		C	Resistor(1/16W 470Ω ±5%) [R239]
110	V R S - C Z 1 J D 4 7 2 J	AA		C	Resistor(1/16W 4.7KΩ ±5%) [R281]
111	V R S - C Z 1 J D 4 7 3 J	AA		C	Resistor(1/16W 47KΩ ±5%) [R161,R204,R205]
112	V R S - C Z 1 J D 5 1 1 J	AA		C	Resistor(1/16W 510Ω

29 DC power supply PWB (120V Series)

NO.	PARTS CODE	PRICE RANK	NEW MARK	PART RANK	DESCRIPTION
1	0AV1690000106	AD		C	Ceramic capacitor(DE1007-486E222M-KH 2200PF KH) [C1,C003,C020,C021]
2	0AV15600000003	AH		C	Film capacitor(RE224-C 0.22μF 250V) [C2,C006]
3	0AV16900000088	AC		C	Ceramic capacitor(TRPE132R104K50 0.22μF 250V) [C4,C019,C114]
4	0AV156000000002	AD		C	Film capacitor(RE104-C 0.1μF 250V) [C5]
5	0AV16900000094	AD		C	Ceramic capacitor(DE1207-486E332M-KH 3300PF KH) [C7]
6	0AV14800000083	AC		C	Film capacitor(ECQB1H102JF4 1000pF 50V) [C8,C023]
7	0AV14800000079	AC		C	Film capacitor(ECQB1H103JF4 0.01μF 50V) [C9,0014]
8	0AV13900000176	AQ		C	Al-electrolytic capacitor(LLS2D471MHLZ 470μF 200V) [C10]
9	0AV16100000091	AC		C	Ceramic capacitor(DE0905-979R102K1K 1000PF 1KV) [C11,C101]
10	0AV16900000110	AD		C	Ceramic capacitor(TRPE132R683K50 0.068μF 50V) [C12]
11	0AV13900000107	AC		C	Al-electrolytic capacitor(UPJ1HR47MDH 0.47μF 50V) [C13,C106]
12	0AV16100000108	AD		C	Ceramic capacitor(DE1307-486R222K1K 2200PF 1KV) [C15]
13	0AV13900000108	AC		C	Al-electrolytic capacitor(UPJ1V220MDH 22μF 35V) [C17,C018,C111,C107]
	0AV13900000108	AC		C	Al-electrolytic capacitor(UPJ1V220MDH 22μF 35V) [C108,C109]
14	0AV13900000177	AC		C	Al-electrolytic capacitor(UPJ1E221MPH 220μF 25V) [C102]
15	0AV13900000181	AE		C	Al-electrolytic capacitor(UHD1A102MPR 1000μF 10V) [C103,C104]
16	0AV13900000178	AG		C	Al-electrolytic capacitor(UPJ1H821MHH 820μF 50V) [C105]
17	0AV13900000182	AG		C	Al-electrolytic capacitor(UHD1V102MHR 1000μF 35V) [C110]
18	0AV13900000179	AC		C	Al-electrolytic capacitor(UPJ1H100MDH 10μF 50V) [C112]
19	0AV16100000109	AC		C	Ceramic capacitor(DE0705-979R471K1K 470PF 1KV) [C113,C116]
20	0AV13900000180	AC		C	Al-electrolytic capacitor(UPJ1H3R3MDH 3.3μF 50V) [C115]
21	0AV3050086000	AB		B	Diode(1SS270A 0.15A 70V) [D1,D014,D106,D108]
	0AV3050086000	AB		B	Diode(1SS270A 0.15A 70V) [D111,D113,D115,D118]
22	0AV3060027000	AH		B	Diode(D3SB60 4A 600V) [D2]
23	0AV3060043000	AC		B	Rectifier(RLIN4005-E 1A 600V) [D3,D004,D012,D015]
24	0AV3070058000	AC		B	Zenner diode(RD5.6ES 0.4W) [D5,D110,D116]
25	0AV3050036000	AF		B	Diode(RG1C 0.7A 1000V) [D6]
26	0AV3050019000	AF		B	Diode(ERA9102 0.5A 200V) [D7,D008,D010]
27	0AV3070085000	AC		B	Zenner diode(RD33ES 0.4W) [D9]
28	0AV3070056000	AD		B	Zenner diode(RD20ES 0.4W) [D11,D013]
29	0AV3050097000	AG		B	Diode(SF10LC20U 10A 200V) [D101]
30	0AV3050099000	AD		B	Diode(D1NL20U 1A 200V) [D102]
31	0AV3050098000	AG		B	Diode(SF5SC4 5A 40V) [D103]
32	0AV3070061000	AC		B	Zenner diode(RD4.7ES 0.4W) [D104]
33	0AV3070057000	AC		B	Zenner diode(RD30ES 0.4W) [D107]
34	0AV3070074000	AC		B	Zenner diode(RD13ES 0.4W) [D109]
35	0AV3070081000	AC		B	Zenner diode(RD3.9ES 0.4W) [D112,D117]
36	0AV3190008000	AN		B	FET(F12F50VX3 12A 500V) [Q1]
37	0AV3001015090	AD		B	Transistor(2SA1015 -0.15A -50V) [Q2]
38	0AV3020143999	AD		B	Transistor(DTC143ESA 0.1A 50V) [Q101,Q108,Q110]
39	0AV3040494000	AP		B	FET(2SJ494 20A 60V) [Q102]
40	0AV3021815090	AC		B	Transistor(2SC1815 0.15A 50V) [Q104,Q106,Q107]
	0AV3021815090	AC		B	Transistor(2SC1815 0.15A 50V) [Q109,Q113]
41	0AV3001020000	AE		B	Transistor(2SA1020 -2A -50V) [Q105]
42	0AV3000143999	AD		B	Transistor(DTA143ESA -0.1A -50V) [Q112]
43	0AV2014743030	AA		C	Fixed carbon film resistor(RDF50S470KΩJ 470KΩ 1/2W) [R1]
44	0AV2041013020	AC		B	Fusing resistor(RF25S100ΩJ 100Ω 1/4W) [R2]
45	0AV2011213030	AB		C	Fixed carbon film resistor(RDF50S120ΩJ 120Ω 1/2W) [R3]
46	0AV2041213030	AC		B	Fusing resistor(RF50S120ΩJ 120Ω 1/2W) [R4]
47	0AV2013933030	AC		C	Fixed carbon film resistor(RDF50S39KΩJ 39KΩ 1/2W) [R5,R006]
48	0AV2011043010	AA		C	Fixed carbon film resistor(RDF16S100KΩJ 100KΩ 1/6W) [R7,R008]
49	0AV2012233010	AA		C	Fixed carbon film resistor(RDF16S22KΩJ 22KΩ 1/6W) [R9,R121,R133,R135]
50	0AV2013333010	AA		C	Fixed carbon film resistor(RDF16S33KΩJ 33KΩ 1/6W) [R10,R014,R026]
51	0AV2011003020	AA		C	Fixed carbon film resistor(RDF25S10ΩJ 10Ω 1/4W) [R11]
52	0AV2091083042	AC		C	Special power resistor(SPR1B0.1ΩJ 0.1Ω 1W) [R12]
53	0AV2041013010	AC		B	Fusing resistor(RF16S100ΩJ 100Ω 1/6W) [R13]
54	0AV2011033010	AA		C	Fixed carbon film resistor(RDF16S10KΩJ 10KΩ 1/6W) [R15,R019,R023]
	0AV2011033010	AA		C	Fixed carbon film resistor(RDF16S10KΩJ 10KΩ 1/6W) [R104,R122,R134]
55	0AV2016833010	AA		C	Fixed carbon film resistor(RDF16S68KΩJ 68KΩ 1/6W) [R16]
56	0AV2015603010	AA		C	Fixed carbon film resistor(RDF16S56ΩJ 56Ω 1/6W) [R17]
57	0AV2026833062	AD		C	Metal oxide film resistor(RSS3FB68KΩJ 68KΩ 3W) [R18]
58	0AV2016803030	AA		C	Fixed carbon film resistor(RDF50S68ΩJ 68Ω 1/2W) [R20]
59	0AV2015633010	AA		C	Fixed carbon film resistor(RDF16S56KΩJ 56KΩ 1/6W) [R21]
60	0AV2011023010	AA		C	Fixed carbon film resistor(RDF16S1KΩJ 1KΩ 1/6W) [R22,R113]
61	0AV2018233020	AB		C	Fixed carbon film resistor(RDF25S82KΩJ 82KΩ 1/4W) [R24,R025]
62	0AV2011033030	AB		C	Fixed carbon film resistor(RDF50S10KΩJ 10KΩ 1/2W) [R101]
63	0AV2012213010	AA		C	Fixed carbon film resistor(RDF16S220ΩJ 220Ω 1/6W) [R103]
64	0AV2016823010	AA		C	Fixed carbon film resistor(RDF16S6.8KΩJ 6.8KΩ 1/6W) [R105]
65	0AV2014723010	AA		C	Fixed carbon film resistor(RDF16S4.7KΩJ 4.7KΩ 1/6W) [R106,R114,R115,R116]
	0AV2014723010	AA		C	Fixed carbon film resistor(RDF16S4.7KΩJ 4.7KΩ 1/6W) [R123,R124,R136,R137]
66	0AV2011533010	AA		C	Fixed carbon film resistor(RDF16S15KΩJ 15KΩ 1/6W) [R107]
67	0AV2990007000	AC		C	Metal film resistor(SN14K2C2.2KΩD 2.2KΩ 1/6W) [R109,R111]
68	0AV2014713010	AA		C	Fixed carbon film resistor(RDF16S470ΩJ 470Ω 1/6W) [R110,R112]
69	0AV2990082000	AC		C	Metal film resistor(SN14K2C12KΩD 12KΩ 1/6W) [R119]
70	0AV2990083000	AC		C	Metal film resistor(SN14K2C3.44KΩD 3.44KΩ 1/6W) [R120]
71	0AV2021023052	AC		C	Metal oxide film resistor(RSS2FB1KΩJ 1KΩ 2W) [R130]
72	0AV2014733010	AA		C	Flame proof fixed carbon film resistor(RDF16S47KΩJ 47KΩ 1/6W) [R131]
73	0AV2012203010	AA		C	Flame proof fixed carbon film resistor(RDF16S22ΩJ 22Ω 1/6W) [R132]
74	0AV4070061000	AF		C	Inductor(LF-4Z-E182) [L1,L002]
75	0AV4120002000	AC		C	Inductor(B-01-A) [L3,L004,L101]

## 29 DC power supply PWB (120V Series)

NO.	PARTS CODE	PRICE RANK	NEW MARK	PART RANK	DESCRIPTION
75	0AV4120002000	AC		C	Inductor(B-01-A) [L102,L103]
76	0AV4080007000	AH		C	Inductor(SK-12M-4Y) [L5]
77	0AV4120013000	AC		C	Inductor(T3140P3206536HW) [L104]
78	0AV4000134711	AS		B	Transformer(N-T01-347-F11) [T1]
79	0AV3160034000	AQ		B	Triac(TM1641PLF113) [TR1]
80	0AV5140021000	AF		B	Power thermistor(M5R114T3C) [TH1]
81	0AV5190002000	AF		B	Varistor(ENC271D-10A) [X1]
82	0AV3180000004	AL		B	Phototriac coupler(S21ME3Y) [PC1]
83	0AV3082561300	AF		B	Photo coupler(PS2561) [PC2,PC003]
84	0AV3090076000	AF		B	IC(MM1431ATT) [IC1,IC102]
85	0AV3090077000	AN		B	IC(FA3647P) [IC2]
86	0AV3090078000	AN		B	IC(PQ20RX11) [IC101]
87	0AV3090071000	AN		B	IC(PQ3RD23) [IC103]
88	0AV5030123000	AD		B	Connector(B02B-VT) [CN1]
89	0AV5030124000	AF		B	Connector(B04P-XL) [CN2]
90	0AV5030125000	AG		B	Connector(B16B-PHDSS-B) [CN101]
91	0AV5080010000	AQ		B	Relay(FTR-H1AA024V) [RL1]
92	0AV5190022000	AK		B	Arrestor(RA-351M-V6-Y-2) [Z1,Z002]
93	0AV5040012000	AM		B	Switch(SDDJE30501 10A 250V) [S1]
94	0AV5060058000	AK		A	Fuse(CES6-15A-N1 15A/125V) [F1]
95	0AV5060020000	AG		A	Fuse(TSCSA5AT-JUC 5A/125V) [F2]
96	0AV5050005000	AA		C	Fuse holder(PFC5000-0203)
97	0AV5130006000	AB		C	Terminal(TP00335-31)
98	0AV5130008000	AC		C	Terminal(TP00370-41)
99	0AV7100003000	AE		C	Insulation sheet(M-30AD-D-3)
100	0AV6114125811	AF		C	Heatsink(LM41258)
101	0AV8117730414	AB		C	Screw(NACPEW-B3x8ZF B3x8)
102	0AV8117730514	AB		C	Screw(NACPEW-B3x10ZF B3x10)
103	0AV7414135811	AD		C	Label(LV41358)
104	0AV5110012000	AB		C	Jumper wire(RJ-SKA-06 6mm) [RJ701,RJ717,RJ724]
105	0AV5110001000	AA		C	Jumper wire(RJ-SCA-06 10mm) [RJ712,RJ713,RJ715]
	0AV5110001000	AA		C	Jumper wire(RJ-SCA-06 10mm) [RJ721,RJ725,RJ727]
106	0AV5110006000	AA		C	Jumper wire(RJ-SDA-06 12.5mm) [RJ711,RJ723,RJ726,RJ731]
	0AV5110006000	AA		C	Jumper wire(RJ-SDA-06 12.5mm) [RJ740,RJ742,RJ744]
107	0AV5110002000	AA		C	Jumper wire(RJ-SEA-06 15mm) [RJ702,RJ704,RJ705,RJ714]
	0AV5110002000	AA		C	Jumper wire(RJ-SEA-06 15mm) [RJ719,RJ720,RJ729,RJ730]
	0AV5110002000	AA		C	Jumper wire(RJ-SEA-06 15mm) [RJ732,RJ733,RJ734,RJ735]
	0AV5110002000	AA		C	Jumper wire(RJ-SEA-06 15mm) [RJ737,RJ739,RJ741,RJ743]
108	0AV5110004000	AA		C	Jumper wire(RJ-SGA-06 20mm) [RJ703,RJ706,RJ708,RJ709,RJ710]
	0AV5110004000	AA		C	Jumper wire(RJ-SGA-06 20mm) [RJ722,RJ728,RJ736,RJ738]
	(Unit)				
901	RDENC0006QS12	BN		E	DC power supply PWB (120V Series)

## 30 DC power supply PWB (127V Series)

NO.	PARTS CODE	PRICE RANK	NEW MARK	PART RANK	DESCRIPTION
1	0AV1690000106	AD		C	Ceramic capacitor(DE1007-486E222M-KH 0.22μF 250V) [C1,C003,C020,C021]
2	0AV1560000003	AH		C	Film capacitor(RE224-C 0.22μF 250V) [C2,C006]
3	0AV1690000088	AC		C	Ceramic capacitor(TRPE132R104K50 0.1μF 50V) [C4,C019,C114]
4	0AV1560000002	AD		C	Film capacitor(RE104-C 0.1μF 250V) [C5]
5	0AV1690000094	AD		C	Ceramic capacitor(DE1207-486E332M-KH 3300PF KH) [C7]
6	0AV1480000083	AC		C	Film capacitor(ECQB1H102JF4 1000pF 50V) [C8,C023]
7	0AV1480000079	AC		C	Film capacitor(ECQB1H103JF4 0.01μF 50V) [C9,0014]
8	0AV1390000197	AR	N	C	Al-electrolytic capacitor(LLS2E471MHLZ 470μF 250V) [C10]
9	0AV1610000091	AC		C	Ceramic capacitor(DE0905-979R102K1K 1000PF 1KV) [C11,C101]
10	0AV1690000110	AD		C	Ceramic capacitor(TRPE132R683K50 0.068μF 50V) [C12]
11	0AV1390000107	AC		C	Al-electrolytic capacitor(UPJ1HR47MDH 0.47μF 50V) [C13,C106]
12	0AV1610000108	AD		C	Ceramic capacitor(DE1307-486R222K1K 2200PF 1KV) [C15]
13	0AV1390000108	AC		C	Al-electrolytic capacitor(UPJ1V220MDH 22μF 35V) [C17,C018,C111,C107]
	0AV1390000108	AC		C	Al-electrolytic capacitor(UPJ1V220MDH 22μF 35V) [C108,C109]
14	0AV1390000177	AC		C	Al-electrolytic capacitor(UPJ1E221MPH 220μF 25V) [C102]
15	0AV1390000181	AE		C	Al-electrolytic capacitor(UHD1A102MPR 1000μF 10V) [C103,C104]
16	0AV1390000178	AG		C	Al-electrolytic capacitor(UPJ1H821MHH 820μF 50V) [C105]
17	0AV1390000182	AG		C	Al-electrolytic capacitor(UHD1V102MHR 1000μF 35V) [C110]
18	0AV1390000179	AC		C	Al-electrolytic capacitor(UPJ1H100MDH 10μF 50V) [C112]
19	0AV1610000109	AC		C	Ceramic capacitor(DE0705-979R471K1K 470PF 1KV) [C113,C016]
20	0AV1390000180	AC		C	Al-electrolytic capacitor(UPJ1H3R3MDH 3.3μF 50V) [C115]
21	0AV3050086000	AB		B	Diode(1SS270) [D1,D014,D106]
	0AV3050086000	AB		B	Diode(1SS270) [D108,D111]
	0AV3050086000	AB		B	Diode(1SS270) [D113,D115,D118]
22	0AV3060027000	AH		B	Diode(D3SB60 4A 600V) [D2]
23	0AV3060043000	AC		B	Rectifier(RLIN4005-E 1A 600V) [D3,D004,D012,D015]
24	0AV3070058000	AC		B	Zenner diode(RD5.6ES 0.4W) [D5,D110,D116]
25	0AV3050036000	AF		B	Diode(RG1C 0.7A 1000V) [D6]

# 30 DC power supply PWB (127V Series)

NO.	PARTS CODE	PRICE RANK	NEW MARK	PART RANK	DESCRIPTION
26	0AV3050019000	AF		B	Diode(ERA9102 0.5A 200V) [D7,D008,D010]
27	0AV3070085000	AC		B	Zenner diode(RD33ES 0.4W) [D9]
28	0AV3070056000	AD		B	Zenner diode(RD20ES 0.4W) [D11,D013]
29	0AV3050097000	AG		B	Diode(SF10LC20U 10A 200V) [D101]
30	0AV3050099000	AD		B	Diode(D1NL20U 1A 200V) [D102]
31	0AV3050098000	AG		B	Diode(SF5SC4 5A 40V) [D103]
32	0AV3070061000	AC		B	Zenner diode(RD4.7ES 0.4W) [D104]
33	0AV3070057000	AC		B	Zenner diode(RD30ES 0.4W) [D107]
34	0AV3070074000	AC		B	Zenner diode(RD13ES 0.4W) [D109]
35	0AV3070081000	AC		B	Zenner diode(RD3.9ES 0.4W) [D112,D117]
36	0AV3190008000	AN		B	FET(F12F50VX3 12A 500V) [Q1]
37	0AV3001015090	AD		B	Transistor(2SA1015 -0.15A -50V) [Q2]
38	0AV3020143999	AD		B	Transistor(DTC143ESA 0.1A 50V) [Q101,Q108,Q110]
39	0AV3040494000	AP		B	FET(2SJ494 20A 60V) [Q102]
40	0AV3021815090	AC		B	Transistor(2SC1815 0.15A 50V) [Q104,Q106,Q107]
41	0AV3001020000	AE		B	Transistor(2SC1815 0.15A 50V) [Q109,Q113]
42	0AV3000143999	AD		B	Transistor(2SA1020 -2A -50V) [Q105]
43	0AV2014743030	AA		C	Transistor(DTA143ESA -0.1A -50V) [Q112]
44	0AV2041013020	AC		B	Fixed carbon film resistor(RDF50S470KΩJ 470KΩ 1/2W) [R1]
45	0AV2011213030	AB		C	Fusing resistor(RF25S100ΩJ 100Ω 1/4W) [R2]
46	0AV2041213030	AC		B	Fixed carbon film resistor(RDF50S120ΩJ 120Ω 1/2W) [R3]
47	0AV2013933030	AC		C	Fusing resistor(RF50S120ΩJ 120Ω 1/2W) [R4]
48	0AV2011043010	AA		C	Fixed carbon film resistor(RDF50S39KΩJ 39KΩ 1/2W) [R5,R006]
49	0AV2012233010	AA		C	Fixed carbon film resistor(RDF16S100KΩJ 100KΩ 1/6W) [R7,R008]
50	0AV2013333010	AA		C	Fixed carbon film resistor(RDF16S22KΩJ 22KΩ 1/6W) [R9,R121,R133,R135]
51	0AV2011003020	AA		C	Fixed carbon film resistor(RDF16S33KΩJ 33KΩ 1/6W) [R10,R014,R026]
52	0AV2091083042	AC		C	Fixed carbon film resistor(RDF25S10ΩJ 10Ω 1/4W) [R11]
53	0AV2041013010	AC		B	Special power resistor(SPR1B0.1ΩJ 0.1Ω 1W) [R12]
54	0AV2011033010	AA		C	Fusing resistor(RF16S100ΩJ 100Ω 1/6W) [R13]
55	0AV2016833010	AA		C	Fixed carbon film resistor(RDF16S10KΩJ 10KΩ 1/6W) [R15,R019,R023]
56	0AV201563010	AA		C	Fixed carbon film resistor(RDF16S10KΩJ 10KΩ 1/6W) [R104,R122,R134]
57	0AV2026833062	AD		C	Fixed carbon film resistor(RDF16S68KΩJ 68KΩ 1/6W) [R16]
58	0AV2016803030	AA		C	Fixed carbon film resistor(RDF16S56ΩJ 56Ω 1/6W) [R17]
59	0AV2015633010	AA		C	Metal oxide film resistor(RSS3FB68KΩJ 68KΩ 3W) [R18]
60	0AV2011023010	AA		C	Fixed carbon film resistor(RDF50S68ΩJ 68Ω 1/2W) [R20]
61	0AV2018233020	AB		C	Fixed carbon film resistor(RDF16S56KΩJ 56KΩ 1/6W) [R21]
62	0AV2011033030	AB		C	Fixed carbon film resistor(RDF16S1KΩJ 1KΩ 1/6W) [R22,R113]
63	0AV2012213010	AA		C	Fixed carbon film resistor(RDF25S82KΩJ 82KΩ 1/4W) [R24,R025]
64	0AV2016823010	AA		C	Fixed carbon film resistor(RDF50S10KΩJ 10KΩ 1/2W) [R101]
65	0AV2014723010	AA		C	Fixed carbon film resistor(RDF16S220ΩJ 220Ω 1/6W) [R103]
66	0AV2011533010	AA		C	Fixed carbon film resistor(RDF16S6.8KΩJ 6.8KΩ 1/6W) [R105]
67	0AV2990007000	AC		C	Fixed carbon film resistor(RDF16S4.7KΩJ 4.7KΩ 1/6W) [R106,R114,R115,R116]
68	0AV2014713010	AA		C	Fixed carbon film resistor(RDF16S4.7KΩJ 4.7KΩ 1/6W) [R123,R124,R136,R137]
69	0AV2990082000	AC		C	Fixed carbon film resistor(RDF16S15KΩJ 15KΩ 1/6W) [R107]
70	0AV2990083000	AC		C	Metal film resistor(SN14K2C2.2KΩD 2.2KΩ 1/6W) [R109,R111]
71	0AV2021023052	AC		C	Fixed carbon film resistor(RDF16S470ΩJ 470Ω 1/6W) [R110,R112]
72	0AV2014733010	AA		C	Metal film resistor(SN14K2C12KΩD 12KΩ 1/6W) [R119]
73	0AV2012203010	AA		C	Metal film resistor(SN14K2C3.44KΩD 3.44KΩ 1/6W) [R120]
74	0AV4120002000	AC		C	Metal oxide film resistor(RSS2FB1KΩJ 1KΩ 2W) [R130]
75	0AV4120002000	AC		C	Flame proof fixed carbon film resistor(RDF16S47KΩJ 47KΩ 1/6W) [R131]
76	0AV4080007000	AH		C	Flame proof fixed carbon film resistor(RDF16S22ΩJ 22Ω 1/6W) [R132]
77	0AV4120013000	AC		C	Inductor(B-01-A) [L1,L002]
78	0AV4000134711	AS		B	Inductor(B-01-A) [L3,L004,L101]
79	0AV3160034000	AQ		B	Inductor(B-01-A) [L102,L103]
80	0AV5140021000	AF		B	Inductor(SK-12M-4Y) [L5]
81	0AV5190002000	AF		B	Inductor(T3140P3206536HW) [L104]
82	0AV3180000004	AL		B	Transformer(N-T01-347-F11) [T1]
83	0AV3082561300	AF		B	Triac(TM1641PLF113) [TR1]
84	0AV3090076000	AF		B	Power thermistor(M5R114T3C) [TH1]
85	0AV3090077000	AN		B	Varistor(ENC271D-10A) [X1]
86	0AV3090078000	AN		B	Phototriac coupler(S21ME3Y) [PC1]
87	0AV3090071000	AN		B	Photo coupler(PS2561) [PC2,PC003]
88	0AV5030123000	AD		B	IC(MM1431ATT) [IC1,IC02]
89	0AV5030124000	AF		B	IC(FA3647P) [IC2]
90	0AV5030125000	AG		B	IC(PQ20RX11) [IC101]
91	0AV5080010000	AQ		B	IC(PQ3RD23) [IC103]
92	0AV5190002200	AK		B	Connector(B02B-VT) [CN1]
93	0AV5040012000	AM		B	Connector(B04P-XL) [CN2]
94	0AV5060090000	AE	N	A	Connector(B16B-PHDSS-B) [CN101]
95	0AV5060091000	AF	N	A	Relay(FTR-H1AA024V) [RL1]
96	0AV5050005000	AA		C	Arrestor(RA-351M-V6-Y-2) [Z1,Z002]
97	0AV5130006000	AB		C	Switch(SDDJE30501 10A/250V) [S1]
98	0AV5130008000	AC		C	Fuse(314SB15AT-JUC 15A/250V) [F1]
99	0AV7100003000	AE		C	Fuse(215SB-5AA-SB 5A/250V) [F2]
100	0AV6114125811	AF		C	Fuse holder(PFC5000-0203)
101	0AV8117730414	AB		C	Terminal(M1866-A)
				C	Terminal(TP00370-41)
				C	Insulation sheet(M-30AD-D-3)
				C	Heatsink(LM41258)
				C	Screw(NACPEW-B3x8ZF B3x8)

### 30 DC power supply PWB (127V Series)

NO.	PARTS CODE	PRICE RANK	NEW MARK	PART RANK	DESCRIPTION
102	0AV8117730514	AB		C	Screw(NACPEW-B3×10ZF B3×10)
103	0AV7414135811	AD		C	Label(LV41358)
104	0AV5110012000	AB		C	Jumper wire(RJ-SKA-06 6mm) [RJ701,RJ718,RJ724]
105	0AV5110001000	AA		C	Jumper wire(RJ-SCA-06 10mm) [RJ712,RJ713,RJ715]
	0AV5110001000	AA		C	Jumper wire(RJ-SCA-06 10mm) [RJ721,RJ725,RJ727]
106	0AV5110006000	AA		C	Jumper wire(RJ-SDA-06 12.5mm) [RJ711,RJ723,RJ726,RJ731]
	0AV5110006000	AA		C	Jumper wire(RJ-SDA-06 12.5mm) [RJ740,RJ742,RJ744]
107	0AV5110002000	AA		C	Jumper wire(RJ-SEA-06 15mm) [RJ702,RJ704,RJ705,RJ714]
	0AV5110002000	AA		C	Jumper wire(RJ-SEA-06 15mm) [RJ719,RJ720,RJ729,RJ730]
	0AV5110002000	AA		C	Jumper wire(RJ-SEA-06 15mm) [RJ732,RJ733,RJ734,RJ735]
	0AV5110002000	AA		C	Jumper wire(RJ-SEA-06 15mm) [RJ737,RJ739,RJ741,RJ743]
108	0AV5110004000	AA		C	Jumper wire(RJ-SGA-06 20mm) [RJ703,RJ706,RJ708,RJ709]
	0AV5110004000	AA		C	Jumper wire(RJ-SGA-06 20mm) [RJ710,RJ722,RJ728]
	0AV5110004000	AA		C	Jumper wire(RJ-SGA-06 20mm) [RJ736,RJ738]
(Unit)					
901	RDENC0006QS11	BQ	N	E	DC power supply PWB (127V Series)

### 31 DC power supply PWB (200V Series)

NO.	PARTS CODE	PRICE RANK	NEW MARK	PART RANK	DESCRIPTION
1	0AV1690000106	AD		C	Ceramic capacitor(DE1007-486E222M-KH 2200PF KH) [C20,C021]
2	0AV1690000088	AC		C	Ceramic capacitor(TRPE132R104K50 0.1μF 50V) [C4,C019,C114,C012]
3	0AV1560000002	AD		C	Film capacitor(RE104-C 0.1μF 250V) [C2,C005,C006]
4	0AV1690000011	AD		C	Ceramic capacitor(DE1210-2E222M-KX 2200PF KX) [C1,C003,C007]
5	0AV1480000083	AC		C	Film capacitor(ECQB1H102JF4 1000pF 50V) [C8,C023]
6	0AV1480000079	AC		C	Film capacitor(ECQB1H103JF4 0.01μF 50V) [C9,0014]
7	0AV1390000183	AQ		C	Al-electrolytic capacitor(LLS2G101MHL 100μF 400V) [C10]
8	0AV1610000091	AC		C	Ceramic capacitor(DE0905-979R102K1K 1000PF 1KV) [C11,C101]
9	0AV1390000184	AC		C	Al-electrolytic capacitor(UPJ1H2R2MDH 2.2μF 50V) [C106]
10	0AV1390000107	AC		C	Al-electrolytic capacitor(UPJ1HR47MDH 0.47μF 50V) [C13]
11	0AV1610000108	AD		C	Ceramic capacitor(DE1307-486R222K1K 2200PF 1KV) [C15]
12	0AV1390000108	AC		C	Al-electrolytic capacitor(UPJ1V220MDH 22μF 35V) [C17,C018,C111]
	0AV1390000108	AC		C	Al-electrolytic capacitor(UPJ1V220MDH 22μF 35V) [C107,C108,C109]
13	0AV1390000177	AC		C	Al-electrolytic capacitor(UPJ1E221MPH 220μF 25V) [C102]
14	0AV1390000181	AE		C	Al-electrolytic capacitor(UHD1A102MPR 1000μF 10V) [C103,C104]
15	0AV1390000178	AG		C	Al-electrolytic capacitor(UPJ1H821MHH 820μF 50V) [C105]
16	0AV1390000182	AG		C	Al-electrolytic capacitor(UHD1V102MHR 1000μF 35V) [C110]
17	0AV1390000179	AC		C	Al-electrolytic capacitor(UPJ1H100MDH 10μF 50V) [C112]
18	0AV1610000109	AC		C	Ceramic capacitor(DE0705-979R471K1K 470PF 1KV) [C113]
19	0AV1390000180	AC		C	Al-electrolytic capacitor(UPJ1H3R3MDH 3.3μF 50V) [C115]
20	0AV1610000114	AD		C	Ceramic capacitor(DE0605-979SL680J2K 68PF 2KV) [C16]
21	0AV3050086000	AB		B	Diode(1SS270 0.15A 70V) [D1,D014,D106,D108]
	0AV3050086000	AB		B	Diode(1SS270 0.15A 70V) [D111,D113,D115,D118]
22	0AV3060027000	AH		B	Diode(D3SB60 4A 600V) [D2]
23	0AV3060043000	AC		B	Rectifier(RLIN4005-E 1A 600V) [D3,D004,D012,D015]
24	0AV3070058000	AC		B	Zenner diode(RD5.6ES 0.4W) [D5,D110,D116]
25	0AV3050036000	AF		B	Diode(RG1C 0.7A 1000V) [D6]
26	0AV3050019000	AF		B	Diode(ERA9102 0.5A 200V) [D7,D008,D010]
27	0AV3070085000	AC		B	Zenner diode(RD33ES 0.4W) [D9]
28	0AV3070056000	AD		B	Zenner diode(RD20ES 0.4W) [D11]
29	0AV3050097000	AG		B	Diode(SF10LC20U 10A 200V) [D101]
30	0AV3050099000	AD		B	Diode(D1NL20U 1A 200V) [D102]
31	0AV3050098000	AG		B	Diode(SF5SC4 5A 40V) [D103]
32	0AV3070061000	AC		B	Zenner diode(RD4.7ES 0.4W) [D104]
33	0AV3070057000	AC		B	Zenner diode(RD30ES 0.4W) [D107,D013]
34	0AV3070074000	AC		B	Zenner diode(RD13ES 0.4W) [D109]
35	0AV3070081000	AC		B	Zenner diode(RD3.9ES 0.4W) [D112,D117]
36	0AV3042605000	AN		B	FET(SK2605 5A 800V) [Q1]
37	0AV3001015090	AD		B	Transistor(2SA1015 -0.15A -50V) [Q2]
38	0AV3020143999	AD		B	Transistor(DTC143ESA 0.1A 50V) [Q101,Q108,Q110]
39	0AV3040494000	AP		B	FET(2SJ494 20A 60V) [Q102]
40	0AV3021815090	AC		B	Transistor(2SC1815 0.15A 50V) [Q104,Q106,Q107]
	0AV3021815090	AC		B	Transistor(2SC1815 0.15A 50V) [Q109,Q113]
41	0AV3001020000	AE		B	Transistor(2SA1020 -2A -50V) [Q105]
42	0AV3000143999	AD		B	Transistor(DTA143ESA -0.1A -50V) [Q112]
43	0AV2011053030	AB		C	Fixed carbon film resistor(RDF50S1MΩJ 1MΩ 1/2W) [R1]
44	0AV2041013020	AC		B	Fusing resistor(RF25S100ΩJ 100Ω 1/4W) [R2]
45	0AV2011213030	AB		C	Fixed carbon film resistor(RDF50S120ΩJ 120Ω 1/2W) [R3]
46	0AV2041213030	AC		B	Fusing resistor(RF50S120ΩJ 120Ω 1/2W) [R4]
47	0AV2011043030	AA		C	Fixed carbon film resistor(RDF50S100KΩJ 100KΩ 1/2W) [R5,R006]
48	0AV2012243010	AA		C	Fixed carbon film resistor(RDF16S220KΩJ 220KΩ 1/6W) [R7,R008]
49	0AV2012233010	AA		C	Fixed carbon film resistor(RDF16S22KΩJ 22KΩ 1/6W) [R121,R133,R135]
50	0AV2013333010	AA		C	Fixed carbon film resistor(RDF16S33KΩJ 33KΩ 1/6W) [R10,R014]
51	0AV2011003020	AA		C	Fixed carbon film resistor(RDF25S10ΩJ 10Ω 1/4W) [R11]
52	0AV2091083042	AC		C	Special power resistor(SPR1B0.1ΩJ 0.1Ω 1W) [R12]
53	0AV2044703010	AB		B	Fusing resistor(RF16S47ΩJ 47Ω 1/6W) [R13]

## 31

# Index

PARTS CODE	NO.	PRICE RANK	NEW MARK	PART RANK	
【C】					
CBTN-0019QS02	6- 2	AF		E	
CBTN-0050QS01	6- 5	AE	N	E	
CCAB-0003QS23	1- 1	AS	N	D	
CCASP0001RS55	22-901	BF	N	E	
CCLEZ0005RS51	16- 1	AQ		E	
"	17- 1	AQ		E	
CCOVH0004RS54	2-901	BF	N	E	
CFIX-0021QS01	1- 13	AG	N	D	
CFIX-0021RS51	1-501	BB	N	E	
CFRM-0006RS53	18-502	BB	N	E	
CFRM-0007RS54	18-501	AX	N	E	
CFRM-0009RS54	24- 17	BF		E	
"	25-901	BF		E	
CFRM-0010RS54	19-502	BG		E	
CFRM-0011RS59	3- 11	BG		E	
"	5-901	BG		E	
CGERH0011RS51	15- 9	AE		E	
CGERH0162QS01	8- 1	AN	N	E	
CHAI-0273RS51	20- 3	AN	N	C	
CHAI-0298RS51	20- 2	AL	N	C	
CHLDZ0010RS52	21-901	AU		E	
"	7- 18	AU		E	
CLEVP0016QS01	26- 17	AL		C	
CPLTM0023QS02	18- 5	AF		C	
CPLTM0023QS03	19- 25	AG		C	
CPLTM0024QS01	12- 24	AG		C	
CPLTM0038QS02	12- 46	AG		C	
CPLTM0042QS02	15- 20	AY		C	
CPLTM0042RS55	15-901	BM	N	E	
CPLTM0042RS56	15-901	BM		E	
CPLTM0288QS01	8- 2	BC	N	E	
CPLTM0291QS01	8- 3	AG	N	E	
CPLTM0294QS01	8- 4	AK	N	E	
CPLTM0299QS01	4- 47	AF		C	
CPLYZ0028QS01	8- 5	AM		E	
CPNLH0023QS12	6- 1	AR	N	D	
CPNLH0023QS13	6- 1	AR	N	D	
CPNLH0023QS21	6- 1	AS	N	D	
CPNLH0023QS22	6- 1	AS	N	D	
CPWBF0009RS51	5- 7	AG		E	
CPWBF0113QSE8	27-901	BB	N	E	
"	6- 8	BB	N	E	
CPWBF0113QSE9	27-901	BB	N	E	
"	6- 8	BB	N	E	
CPWBF0113QSF0	27-901	BB	N	E	
"	6- 8	BB	N	E	
CPWBF0116RS51	12- 1	AP		E	
CPWBF0116RS52	14- 13	AP		E	
CPWBF0116RS53	10- 4	AP		E	
CPWBF0116RS54	18- 1	AP		E	
CPWBF0122QS31	13- 33	AZ		E	
CPWBX0112QS3A	13- 4	BW	N	E	
"	28-901	BW	N	E	
CPWBX0112QS3D	13- 4	BY		E	
"	28-901	BY		E	
CPWBX0112QS3G	13- 4	BW	N	E	
"	28-901	BW	N	E	
CRÖLP0015QS01	12- 20	AU		C	
"	25- 25	AU		C	
CSOU-0002RS56	19-501	AX		E	
CSW-M0016RS51	16- 4	AG		E	
"	17- 4	AG		E	
CTHM-0019DS52	14- 12	AT		E	
CTME-0229FC04	14- 11	AG		C	
【D】					
DHAi-0265QSZZ	13- 37	AM	N	C	
DHAi-0267QSZZ	11- 18	AG		C	
DHAi-0268QSZ1	23- 2	AH	N	C	
"	8- 40	AH	N	C	
DHAi-0268QSZZ	23- 2	AZ		C	
"	8- 40	AZ		C	
DHAi-0269QSZZ	12- 27	AD		C	
DHAi-0271QSZZ	11- 27	AP		C	
"	23- 9	AP		C	
DHAi-0274QSZZ	11- 24	AG		C	
"	23- 8	AG		C	
DHAi-0276QSZ2	11- 24	AL		C	
"	13- 36	AL		C	

PARTS CODE	NO.	PRICE RANK	NEW MARK	PART RANK	
DHAi-0276QSZ2	23- 8	AL		C	
DHAi-0278QSZ1	14- 16	AK		C	
"	23- 10	AK		C	
DHAi-0280QSZ1	14- 16	AH	N	C	
"	23- 10	AH	N	C	
DHAi-0282QSZZ	10- 14	AG	N	C	
"	9- 2	AG	N	C	
DHAi-0285QSZZ	10- 10	AK	N	C	
"	1- 7	AK	N	C	
"	23- 4	AK	N	C	
DHAi-0287QSZZ	11- 23	AF	N	C	
"	23- 7	AF	N	C	
DHAi-0291QSZZ	7- 12	AC	N	C	
DHAi-0292QSZZ	11- 19	AF	N	C	
DHAi-0293QSZZ	5- 8	AE		C	
DHAi-0294QSZZ	13- 31	AK	N	C	
"	23- 3	AK	N	C	
DHAi-0295QSZZ	18- 2	AC	N	C	
"	19- 22	AC	N	C	
DHAi-0296QSZZ	15- 27	AK	N	C	
"	23- 5	AK	N	C	
DHAi-0303QSZZ	8- 37	AD		C	
DHAi-0304QSZ1	4- 11	AQ	N	C	
DHAi-0305QSZ1	13- 32	AP	N	C	
DHAi-0306QSZZ	24- 18	AG		C	
"	25- 14	AG		C	
DUNT-0276QS11	8- 6	BT	N	E	
DUNT-0276QSZZ	8- 6	BT	N	E	
DUNTK0013QS13	9- 4	BS	N	E	
DUNTW0285RS12	14-901	BS	N	E	
DUNTW0285RS13	14-901	BS	N	E	
DWiR-0466CSZZ	21- 8	BG		B	
【G】					
GCAB-0007QSJ2	7- 1	AU	N	D	
GCAB-0008QSJZ	5- 1	AM		D	
GCAB-0021QSJ1	1- 18	AY	N	D	
GCAB-0026QSJ2	1- 18	AZ		D	
GCAB-0061QSZZ	1- 10	AK	N	D	
GCAB-0062QSZ1	1- 17	AL	N	D	
GCAB-0062QSZZ	1- 17	AL		D	
GCAB-0063QSZZ	6- 10	AT	N	D	
GCAB-0064QSZZ	6- 12	AN	N	D	
GCASP0001QSJ2	22- 19	AZ	N	D	
GCOV-0045QSZ1	1- 12	AG	N	D	
GCOV-0045QSZZ	1- 12	AG		D	
GCOVA0005QSJZ	24- 1	AL		D	
GCOVA0006QSJZ	24- 3	AN		D	
GCOVA0007QSZZ	24- 10	AK		D	
GCOVA0008QSJZ	24- 14	AK		D	
GCOVH0003QSJZ	2- 1	AL	N	D	
GCOVH0004QSJ1	2- 2	AX	N	D	
GCOVZ0149FCZZ	26- 7	AU		D	
GDAi-0001QSJ1	12- 28	BF	N	D	
"	13- 17	BF	N	D	
GLEGG0064FCZZ	13- 18	AC		C	
"	24- 7	AC		C	
【J】					
JBTN-0005QSZZ	6- 4	AC		C	
JBTN-0020QSZZ	6- 3	AC		C	
JBTN-0049QSZZ	6- 6	AF	N	C	
JKNBZ0001QSZZ	11- 22	AE		C	
JKNBZ0004QSZZ	4- 35	AD		C	
【L】					
LBNDJ0013FCZ1	14- 17	AA		C	
"	18- 3	AA		C	
"	19- 21	AA		C	
"	20- 9	AA		C	
"	25- 4	AA		C	
"	3- 12	AA		C	
"	4- 16	AA		C	
"	9- 3	AA		C	
LBNDJ0043FCZZ	11- 6	AA		C	
LBOSZ0118QSZZ	19- 18	AE		C	
LBOSZ1031FCZZ	12- 15	AC		C	
"	25- 7	AC		C	
LBOSZ1509FCZ1	19- 28	AD		C	
LBOSZ1851FCZZ	12- 13	AC		C	
"	19- 15	AC		C	
"	5- 19	AC		C	
LBRC-0055FCZZ	19- 10	AK		C	
LBSHZ0006QSZZ	5- 22	AC		C	

PARTS CODE	NO.	PRICE RANK	NEW MARK	PART RANK	
LBSHZ0303FCZZ	19- 9	AC		C	
"	5- 20	AC		C	
LFX-0004QSZZ	21- 15	AC		C	
LFRM-0003QSJ2	7- 9	AN		D	
LFRM-0004QSZZ	14- 7	AV		D	
LFRM-0005QSZZ	14- 30	AQ		D	
LFRM-0006QSJZ	18- 13	AN	N	D	
LFRM-0007QSJ2	18- 25	AL	N	D	
LFRM-0009QSZZ	25- 26	AQ		D	
LFRM-0010QSJZ	19- 35	AN		D	
LFRM-0011QSJ2	5- 35	AL		D	
LFRM-0014QSZZ	4- 30	AE		C	
LFRM-0015QSZZ	4- 17	AK		C	
LFRM-0035QSZZ	11- 21	AZ		D	
LFRM-0062QSZZ	13- 30	AG	N	C	
LHLD00097QSZZ	13- 34	AG	N	C	
LHLDW1226FCZZ	22- 3	AB		C	
"	26- 12	AB		C	
LHLDZ0009QSDZ	20- 1	AG		C	
LHLDZ0010QSZZ	21- 14	AL		C	
LHLDZ0017QSZZ	12- 30	AD		C	
LHLDZ0018QSZZ	11- 13	AE		C	
LHLDZ0080QSZZ	12- 49	AC		C	
LHLDZ0092QSZZ	13- 1	AP	N	C	
LHLDZ0093QSZZ	8- 7	AC	N	C	
LHLDZ0096QSZZ	13- 24	AN		C	
LPI NS0008QSZZ	11- 26	AD		C	
LPI NS0009QSZZ	11- 26	AD		C	
LPI NS0019QSZZ	4- 46	AB		C	
LPLTM0016QSZZ	12- 42	AE		C	
LPLTM0020QSZZ	13- 21	AL		C	
LPLTM0022QSZZ	14- 29	AG		C	
LPLTM0036QSZZ	24- 6	AF		C	
LPLTM0043QSZZ	7- 5	AD		C	
LPLTM0046QSZZ	12- 25	AE		C	
LPLTM0096QSZZ	3- 53	AF		C	
LPLTM0122QSZZ	3- 52	AD		C	
LPLTM0132QSZZ	7- 5	AH		C	
LPLTM0133QSZZ	11- 31	AE		C	
LPLTM2642FCGZ	22- 4	AD		C	
LPLTM5106FCZZ	22- 1	AR		C	
LPLTM5422FCZZ	12- 50	AC		C	
LPLTP0009QSZZ	14- 38	AS		C	
LPLTP0011QSJZ	3- 2	AH		C	
LPLTP0012QSJZ	3- 3	AH		C	
LPLTP0013QSZZ	4- 3	AD		C	
LPLTP0014QSZZ	3- 28	AK		C	
LPLTP0015QSZZ	4- 39	AH		C	
LPLTP0041QSZZ	3- 39	AE		C	
LPLTP0131QSZZ	8- 33	AD		C	
LPLTP5107FCZZ	22- 5	AH		C	
LPLTP5108FCZZ	22- 13	AH		C	
LRALP0001QSJ1	12- 34	AL	N	C	
LSOU-0001QSJZ	1- 2	AY	N	D	
LSOU-0002QSJZ	19- 48	AL		D	
LSOU-0003QSJZ	19- 49	AH		D	
LSOU-0006QSZZ	3- 9	AL		D	
LSOU-0007QSJZ	3- 54	BB		D	
LSOU-0008QSJZ	1- 4	AH	N	D	
LSOU-0035QSZZ	3- 1	AR		D	
LSTPF0013QSZZ	8- 8	AC	N	C	
LSTPP0007QSZZ	5- 5	AC		C	
LSTPP0116FCZZ	14- 18	AA		C	
LSTPP0161FCZZ	22- 18	AB		C	
LSTPP0300FCZZ	19- 37	AB		C	
LX-BZ0010QSZZ	14- 8	AB		C	
LX-BZ0011QSZZ	14- 42	AB		C	
LX-BZ0016QSZZ	3- 33	AC		C	
LX-BZ0033QSZZ	8- 9	AB		C	
LX-BZ0735FCZZ	14- 36	AA		C	
LX-BZ3006SC0S	11- 28	AA		C	
LX-WZ0023FCZZ	12- 43	AA		C	
LX-WZ0313FCZZ	14- 26	AA		C	
LX-WZ2028SCZZ	22- 10	AA		C	
[M]					
MARMP0002QSZZ	5- 13	AD		C	
MARMP0003QSZZ	5- 4	AD		C	
MARMP0004QSZZ	5- 34	AF		C	
MARMP0012QSZZ	24- 13	AD		C	
MARMP0173FCZZ	19- 4	AC		C	
MARMP0204FCZZ	19- 39	AF		C	

PARTS CODE	NO.	PRICE RANK	NEW MARK	PART RANK	
MARMP0205FCZZ	19- 38	AF		C	
MARMP0229FCZZ	25- 12	AE		C	
MHNG-0002QSZZ	19- 40	AC		C	
MHNG-0019QSZZ	3- 30	AS		C	
MLEVF0041QSZZ	3- 25	AD		C	
MLEVP0005QSZZ	10- 5	AD		C	
MLEVP0006QSZZ	12- 2	AD		C	
MLEVP0007QSZZ	18- 17	AD		C	
MLEVP0009QSZZ	5- 9	AD		C	
MLEVP0010QSZZ	5- 10	AE		C	
MLEVP0014QSZZ	14- 28	AF		C	
MLEVP0015QSZZ	14- 23	AF		C	
MLEVP0033QSZZ	25- 16	AF		C	
MLEVP0036QSZZ	3- 18	AD		C	
MLEVP0047QSE1	8- 34	AD		C	
MLOKZ0004QSZZ	8- 10	AD	N	C	
MSPRC0016QSZZ	20- 7	AC		C	
MSPRC0017QSZZ	20- 5	AC		C	
MSPRC0018QSZZ	20- 6	AC		C	
MSPRC0021QSZZ	10- 7	AB		C	
MSPRC0023QSZZ	15- 15	AC		C	
MSPRC0024QSZZ	11- 8	AC		C	
MSPRC0026QSZZ	12- 3	AB		C	
MSPRC0027QSZZ	21- 10	AC		C	
MSPRC0028QSZZ	21- 11	AC		C	
MSPRC0030QSZZ	7- 14	AC		C	
MSPRC0031QSZZ	7- 13	AB		C	
MSPRC0032QSZZ	7- 11	AB		C	
MSPRC0036QSZZ	18- 26	AB		C	
MSPRC0037QSZZ	12- 62	AB		C	
MSPRC0038QSZZ	18- 16	AC		C	
MSPRC0039QSZZ	18- 14	AC		C	
MSPRC0047QSZZ	12- 31	AA		C	
MSPRC0048QSZZ	19- 41	AB		C	
MSPRC0049QSZZ	19- 14	AC		C	
MSPRC0050QSZZ	7- 25	AB		C	
MSPRC0051QSZZ	21- 12	AA		C	
MSPRC0053QSZZ	15- 3	AC		C	
MSPRC0055QSZZ	14- 25	AC		C	
MSPRC0062QSZZ	4- 4	AC		C	
MSPRC0063QSZZ	4- 36	AB		C	
MSPRC0077QSZZ	12- 41	AB		C	
MSPRC0080QSZZ	18- 18	AB		C	
MSPRC0108QSZZ	22- 15	AC		C	
MSPRC0109QSZZ	18- 33	AC		C	
"	19- 50	AC		C	
MSPRC0115QSZZ	5- 33	AB		C	
MSPRC0149QSZZ	3- 51	AC		C	
MSPRC0153QSZZ	8- 35	AB		C	
MSPRC0161QSZZ	12- 16	AF		C	
"	25- 8	AF		C	
MSPRC1145FCZZ	22- 17	AA		C	
MSPRC1315FCZZ	19- 16	AD		C	
MSPRC1316FCZZ	12- 11	AE		C	
"	19- 27	AE		C	
"	5- 18	AE		C	
MSPRC1318FCZZ	15- 23	AA		C	
"	19- 30	AA		C	
MSPRC1873FCZZ	22- 16	AB		C	
MSPRC2175FCZZ	19- 33	AA		C	
MSPRC2544FCZZ	24- 9	AC		C	
MSPRC2545FCZZ	25- 13	AB		C	
MSPRC2546FCZZ	25- 21	AB		C	
MSPRD0058QSZZ	25- 17	AG		C	
MSPRD0069QSZZ	3- 42	AC		C	
MSPRD0070QSZZ	3- 41	AC		C	
MSPRD0076QSZZ	7- 6	AD		C	
MSPRD0108QSZZ	18- 31	AC		C	
MSPRD0114QSZZ	5- 36	AD		C	
MSPRD0126QSZZ	3- 19	AC		C	
MSPRD0154QSZZ	3- 48	AD		C	
MSPRD0163QSZZ	4- 45	AC		C	
MSPRD0281QSZZ	10- 9	AD	N	C	
MSPRD0282QSZZ	14- 3	AH	N	C	
MSPRP0033QSZZ	14- 6	AD		C	
MSPRP0034QSZZ	14- 14	AE		C	
MSPRP0052QSZZ	3- 47	AD		C	
MSPRP0059QSZZ	3- 7	AD		C	
MSPRP0060QSZZ	3- 50	AD		C	
MSPRP0065QSZZ	4- 31	AD		C	
MSPRP0079QSZZ	18- 29	AD		C	

PARTS CODE	NO.	PRICE RANK	NEW MARK	PART RANK	
MSPRP0110QSZ1	16- 6	AD		C	
"	17- 6	AD		C	
MSPRT0019QSZ1	9- 5	AB		C	
MSPRT0020QSZ1	10- 2	AB		C	
MSPRT0029QSZZ	7- 3	AC		C	
MSPRT0054QSZ1	14- 37	AB		C	
MSPRT0066QSZ1	5- 25	AC		C	
MSPRT0067QSZ1	5- 14	AB		C	
MSPRT0112QSZ1	24- 12	AC		C	
MSPRT0283QSZZ	8- 11	AC	N	C	
MSPRT0284QSZZ	8- 12	AC	N	C	
MSPRT0294QSZZ	4- 48	AC		C	
MSPRT0513FCZ1	21- 7	AA		C	
[N]					
NBLT-0005QSZZ	11- 5	AH		B	
NBLTT0001QSZZ	11- 20	AH		B	
NBLTT0004QSZZ	11- 37	AH		B	
NBLTT0011QSZZ	4- 22	AG		B	
NBLTT0030QSZZ	8- 13	AH	N	B	
NBLTT0031QSZZ	8- 14	AF	N	B	
NBLTT0032QSZZ	4- 34	AE		B	
NBRGC0016QSZZ	25- 2	AD		C	
NBRGC0017QSZZ	4- 27	AC		C	
NBRGC0100FCZ1	12- 8	AC		C	
NBRGC0579FCZZ	11- 2	AE		C	
NBRGM0501FCZZ	3- 26	AB		C	
"	4- 25	AB		C	
NBRGP0260FCZ1	14- 24	AD		C	
NBRGP0562FCZZ	12- 19	AD		C	
"	18- 11	AD		C	
NBRGP0567FCZZ	14- 20	AG		C	
NCPL-0006QSZZ	11- 7	AC		C	
NFANP0005QSZ1	11- 12	BR	N	B	
NGERH0007QSZZ	15- 11	AH		C	
NGERH0008QSZZ	15- 16	AL		C	
NGERH0009QSZZ	15- 7	AD		C	
NGERH0010QSZZ	15- 6	AD		C	
NGERH0012QSZZ	15- 18	AE		C	
NGERH0013QSZZ	15- 19	AG		C	
NGERH0014QSZZ	15- 8	AD		C	
NGERH0015QSZZ	15- 10	AD		C	
NGERH0016QSZZ	15- 12	AD		C	
NGERH0017QSZZ	15- 17	AD		C	
NGERH0018QSZZ	15- 14	AC		C	
NGERH0019QSZZ	15- 13	AD		C	
NGERH0020QSZZ	12- 9	AG		C	
NGERH0021QSZZ	18- 27	AD		C	
"	19- 46	AD		C	
NGERH0022QSZZ	12- 21	AC		C	
NGERH0025QSZZ	12- 23	AD		C	
NGERH0026QSZZ	12- 22	AD		C	
NGERH0041QSZZ	25- 22	AF		C	
NGERH0047QSZZ	4- 23	AF		C	
NGERH0048QSZZ	7- 22	AE		C	
NGERH0050QSZZ	15- 4	AD		C	
NGERH0051QSZZ	7- 23	AE		C	
NGERH0073QSZZ	5- 16	AE		C	
NGERH0079QSZZ	4- 26	AD		C	
NGERH0161QSZZ	8- 15	AL	N	C	
NGERH0193FCZZ	22- 11	AB		C	
"	3- 6	AB		C	
NGERH0540FCZ3	14- 19	AD		C	
NGERH0972FCZZ	18- 6	AB		C	
"	19- 19	AB		C	
NGERH0990FCZZ	18- 9	AB		C	
"	19- 7	AB		C	
"	25- 23	AB		C	
"	5- 28	AB		C	
NGERH0991FCZZ	19- 20	AC		C	
NGERH0992FCZZ	19- 3	AB		C	
"	25- 5	AB		C	
"	5- 30	AB		C	
NGERH1132FCZZ	12- 18	AH		C	
"	25- 10	AH		C	
NGERH1169FCZZ	12- 47	AF		C	
NGERH1207FCZZ	25- 11	AF		C	
NGERR0377FCZZ	3- 4	AD		C	
NPLYZ0001QSZZ	11- 4	AE		C	
NPLYZ0002QSZZ	15- 5	AC		C	
NPLYZ0010QSZZ	5- 23	AE		C	
NPLYZ0146FCZZ	4- 33	AB		C	

PARTS CODE	NO.	PRICE RANK	NEW MARK	PART RANK	
NRÖL i 0014QSZ3	14- 21	BA	N	C	
NRÖLM0022QSZ1	4- 43	AL		C	
NRÖLM0026QSZ1	4- 40	AL		C	
NRÖLM0027QSZ1	4- 6	AL		C	
NRÖLP0007QSZ1	11- 1	AQ		C	
NRÖLP0010QSZZ	3- 46	AD		C	
NRÖLP0011QSZZ	3- 36	AD		C	
NRÖLP0012QSZZ	11- 3	AL	N	C	
NRÖLP0019QSZ1	25- 1	AP		C	
NRÖLP0024QSZ1	5- 27	AH		C	
NRÖLP0025QSZZ	7- 24	AM		C	
NRÖLP0046QSZZ	10- 1	AC		C	
NRÖLP1008FCZZ	19- 5	AK		C	
NRÖLP1060FCZZ	24- 11	AF		C	
NRÖLP1122FCZZ	10- 8	AF		C	
"	18- 24	AF		C	
"	7- 17	AF		C	
"	7- 26	AF		C	
NRÖLR0013QSZZ	12- 7	AQ		C	
NRÖLR0016QSZZ	18- 12	AT		C	
NRÖLR0028QSZZ	14- 27	AZ		C	
NRÖLR0922FCZZ	19- 1	AR		C	
"	5- 31	AR		C	
NSFTZ0006QSZ1	7- 15	AG		C	
NSFTZ0007QSZ1	18- 23	AG		C	
NSFTZ0007QSZZ	18- 23	AG	N	C	
NSFTZ0009QSZZ	3- 49	AE		C	
NSFTZ0011QSZZ	5- 32	AF		C	
NSFTZ0012QSZZ	5- 21	AG		C	
NSFTZ0013QSZZ	3- 38	AF		C	
NSFTZ0014QSZZ	3- 43	AP		C	
NSFTZ0063QSZZ	8- 16	AK	N	C	
NSFTZ2311FCZZ	19- 8	AU		C	
[P]					
PBRSR0002QSZ1	8- 17	AH		B	
PBRSR0002QSZZ	8- 17	AG		B	
PBRSR0003QSZZ	4- 7	AG		B	
PBRSR0004QSZ1	14- 4	AD	N	B	
PCASZ0002QSZZ	21- 16	AL		D	
PCLC-0010QSZZ	4- 28	AT		B	
PCOVP0007QSJZ	12- 38	AE	N	D	
PCOVP0008QSZZ	12- 60	AE		C	
PCOVP0009QSZZ	12- 61	AE		C	
PCOVP0010QSZZ	14- 5	AG		D	
PCOVP0011QSZZ	14- 15	AK		D	
PCOVP0012QSJ1	16- 3	AH		C	
PCOVP0013QSZZ	12- 32	AD		D	
PCOVP0019QSJZ	19- 44	AL		D	
PCOVP0022QSJZ	3- 10	AT		C	
PCOVP0023QSJ1	17- 3	AH		D	
PCOVP0035QSJZ	1- 16	AL	N	D	
PCOVP0040QSJZ	1- 16	AL		D	
PCUSS0016QSZZ	3- 31	AB		C	
PCUSS0024QSZZ	2- 3	AV	N	D	
PCUSS0025QSZZ	3- 56	AQ		D	
PCUSU0026QSZZ	8- 42	AC	N	D	
PDOC-0005QSZZ	8- 22	AD	N	C	
PFiLZ0002QSZZ	1- 21	AL		D	
PGiDH0025QSZ1	21- 4	AG		C	
PGiDH0026QSZZ	14- 34	AE		C	
PGiDH0027QSZZ	4- 41	AK		C	
PGiDH0028QSZZ	4- 8	AK		C	
PGiDM0006QSZZ	10- 6	AM		C	
PGiDM0008QSZZ	7- 4	AD		C	
PGiDM0009QSZZ	11- 25	AG		C	
PGiDM0010QSZ1	12- 5	AG		C	
PGiDM0011QSZZ	21- 2	AE		C	
PGiDM0012QSJZ	18- 22	AF	N	C	
PGiDM0013QSJZ	18- 21	AF	N	C	
PGiDM0014QSJZ	18- 20	AF		C	
"	19- 12	AF		C	
PGiDM0015QSJZ	24- 8	AY		C	
PGiDM0016QSJZ	24- 4	AY		C	
PGiDM0017QSJZ	19- 43	AF		C	
PGiDM0018QSJZ	19- 42	AF		C	
PGiDM0019QSJZ	8- 29	AH		C	
PGiDM0020QSJZ	8- 30	AH		C	
PGiDM0021QSZZ	4- 38	AQ		C	
PGiDM0022QSZZ	4- 5	AN		C	
PGiDM0023QSZZ	14- 1	AP		C	
PGiDM0057QSZZ	4- 10	AL		C	

PARTS CODE	NO.	PRICE RANK	NEW MARK	PART RANK	
PGIDM0059QSJZ	8- 29	AG	N	C	
PGIDM0060QSJZ	8- 30	AF	N	C	
PGIDM0099QSJZ	8- 18	AH	N	C	
PGLSP0007QSZZ	1- 14	AV	N	B	
PGLSP0008QSZZ	1- 23	AH		B	
PGUMS0004QSZZ	8- 19	AA		C	
PMLT-0024QSZZ	1- 20	AC		C	
PMLT-0067QSZZ	11- 39	AC	N	C	
PMLT-0068QSZZ	8- 47	AC	N	C	
PMLT-0069QSZZ	1- 27	AA	N	C	
PPIPP0003QSZZ	12- 17	AD		C	
PPIPP0007QSZZ	25- 9	AD		C	
PPIPP0010QSZZ	5- 17	AD		C	
PPIPP0109FCZ1	12- 10	AC		C	
"	19- 17	AC		C	
PPIPP0175FCZZ	19- 26	AC		C	
PRNGP0090FCZZ	3- 27	AA		C	
PSHEP0019QSZ1	21- 3	AC		C	
PSHEP0020QSZZ	21- 13	AB		C	
PSHEP0021QSZZ	21- 6	AA		C	
PSHEP0023QSZZ	14- 35	AF		C	
PSHEP0047QSZZ	14- 40	AC		C	
PSHEP0061QSZZ	22- 8	AA		C	
PSHEP3029FCZZ	4- 21	AA		C	
PSHEZ0018QSZZ	21- 1	AF		C	
PSHEZ0039QSZZ	4- 2	AG		C	
PSHEZ0045QSZZ	14- 33	AC		C	
PSHEZ0068QSZZ	3- 29	AC		C	
PSHEZ0075QSZZ	17- 7	AC		C	
PSHEZ0151QSZZ	3- 23	AD		C	
PSHEZ0155QSZZ	11- 38	AD		C	
PSHEZ0156QSZZ	11- 36	AE		C	
PSHEZ0162QSZZ	4- 44	AB		C	
PSHEZ0164QSZZ	4- 42	AF		C	
PSHEZ0181QSJZ	1- 24	AC		C	
PSHEZ0350QSZZ	9- 6	AB		C	
PSHEZ0351QSZZ	9- 7	AB		C	
PSHEZ0367QSZZ	8- 21	AD	N	C	
PSHEZ0369QSZZ	1- 8	AE	N	C	
PSHEZ0377QSZZ	8- 24	AC	N	C	
PSHEZ0380QSZZ	3- 32	AD		C	
PSHEZ0381QSZZ	3- 44	AD		C	
PSHEZ0383QSZZ	3- 60	AC		C	
PSHEZ0384QSZZ	3- 21	AD		C	
PSHEZ0386QSZZ	3- 57	AB		D	
PSHEZ0387QSZZ	3- 58	AB		D	
PSHEZ0389QSZ1	8- 39	AK	N	C	
PSHEZ0389QSZZ	8- 39	AH	N	C	
PSHEZ0390QSZZ	13- 22	AL	N	C	
"	23- 6	AL	N	C	
PSHEZ0400QSZZ	8- 48	AG		C	
PSHEZ0401QSZZ	8- 45	AG	N	C	
PSHEZ0402QSZZ	10- 16	AG		C	
PSHEZ0403QSZZ	8- 44	AG	N	C	
PSHEZ0404QSZZ	1- 28	AF	N	C	
PSHEZ0405QSZZ	13- 38	AE		C	
PSHEZ2026FCZ1	12- 29	AB		C	
PSHEZ2174FCZZ	12- 36	AB		C	
"	4- 1	AB		C	
PSHEZ4142FCZZ	22- 2	AC		C	
PSPAZ0017QSZZ	11- 32	AK		C	
PSPO-0001QSZZ	3- 37	AB		C	
PSPO-0002QSZZ	5- 2	AC		C	
PSPO-0003QSZZ	3- 34	AC		C	
PSPO-0004QSZZ	3- 20	AB		C	
"	4- 14	AB		C	
PTME-0002QSZZ	15- 24	AD		C	
PTME-0003QSZ1	15- 26	AD		C	
PTME-0004QSZZ	7- 2	AG		C	
PTME-0008QSZZ	25- 20	AD		C	
PTME-0019QSZZ	5- 26	AD		C	
PTME-0178FCZ1	19- 32	AC		C	
PTME-0179FCZZ	19- 31	AC		C	
PTME-0255FCZZ	22- 6	AG		C	
PTME-0256FCZZ	22- 14	AG		C	
PTPE-0010QSZZ	1- 25	AC		C	
PTPE-0040QSZZ	1- 15	AC	N	C	
PTPE-0041QSZZ	1- 6	AB	N	C	
PTPE-0044QSZZ	1- 22	AC		C	
PTPE-0045QSZZ	8- 43	AA	N	C	
PTPE-0046QSZZ	8- 46	AB	N	C	

PARTS CODE	NO.	PRICE RANK	NEW MARK	PART RANK	
PTPE-0047QSZZ	1- 29	AC	N	C	
PTPE-0048QSZZ	1- 30	AA	N	C	
PTUBP0005QSZZ	10- 13	AC		C	
[Q]					
QACCB7521QCZZ	26- 3	AS		B	
QACCB7622QCN1	26- 3	AZ		B	
QACCB7623QCPZ	26- 3	AY	N	B	
QACCD761AQCZZ	13- 26	BE		B	
"	26- 3	BE		B	
QACCER622QCPZ	26- 3	AQ		B	
QACCF7620QCZZ	26- 3	AX		B	
QACCLR622QCPZ	26- 3	AR		B	
QACCV6621JHPZ	26- 3	*	N	B	
QCNCM0079QSZZ	28- 1	AC		C	
QCNCM0861FCZZ	27- 1	AB		C	
QCNCM0923FC14	28- 2	AE		C	
QCNCM0923FC18	28- 3	AF		C	
QCNCM0923FC24	28- 4	AF		C	
QCNCM1005MCZZ	28- 6	AB		C	
QCNCM2401SC0C	28- 7	AB		C	
QCNCM2401SC0D	28- 8	AC		C	
QCNCM2401SC0E	28- 9	AC		C	
QCNCM7014SC0C	28- 10	AA		C	
QCNCM7014SC0D	28- 11	AB		C	
QCNCM7014SC0E	28- 12	AB		C	
QCNCM7014SC0F	28- 13	AB		C	
QCNCP0340QCZZ	28- 14	AC		C	
QCNCP0341QCZZ	28- 15	AC		C	
QCNCW0024QSZZ	28- 16	AF		C	
QCNCW0078QSZZ	28- 17	AF		C	
QCNCW0948FCZ5	28- 5	AC		C	
QCNCW1124LC0H	28- 19	AC		C	
QCNCW1124LC1H	28- 20	AD		C	
QCNCW1132LC1H	27- 2	AD		C	
QSLP-0005QSZZ	11- 16	AE		C	
QSLP-0006QSZZ	11- 14	AE		C	
QSLP-0007QSZZ	21- 9	AC		C	
QSOCZ0002QSZZ	28- 21	AD		C	
QSW-B0003QSZZ	25- 24	AF		B	
QSW-P0001ESZZ	27- 3	AC		B	
[R]					
RCILZ0015QSZZ	28- 22	AD		C	
RCORF0018QSZZ	10- 15	AR	N	C	
"	13- 23	AR	N	C	
"	8- 32	AR	N	C	
RCORF0020QSZZ	8- 41	AL	N	C	
RCORF0021QSZZ	13- 27	AK	N	C	
"	9- 8	AK	N	C	
RCORF0034FCZZ	13- 28	AR		C	
RCRSP0016QSZZ	28- 23	AD		B	
RCRUB0013QSZZ	28- 24	AN		B	
RCRUB0016QSZZ	28- 25	AN		B	
RDENC0006QS11	13- 13	BQ	N	E	
"	30-901	BQ	N	E	
RDENC0006QS12	13- 13	BN		E	
"	29-901	BN		E	
RDENC0006QS13	13- 13	BN	N	E	
"	31-901	BN	N	E	
RDENC0007QSZZ	13- 6	BG	N	E	
RDTCT0004QSZZ	4- 37	AL		B	
RDTCT0128FCZZ	14- 9	AR		B	
RFILN0043FCZZ	28-127	AC		C	
RFILZ0004QSZZ	28- 26	AM		C	
RH-DX0001ESZZ	28- 27	AC		B	
RH-DZ0016FCZZ	28- 28	AB		B	
RH-iX0001QSZZ	28- 29	BD		B	
RH-iX0002QSZZ	28- 30	AZ		B	
RH-iX0005ESZZ	28- 74	AE		B	
RH-iX0020QSZZ	28- 31	AS		B	
RH-TX0003ESZZ	27- 23	AC		B	
RLMPU0010QSZZ	14- 22	BA		B	
RLMPU0011QSZZ	14- 22	BA		B	
RMOTD0009QSZZ	11- 9	AU		B	
RMOTP0012QSZZ	11- 35	AW		B	
RMOTP0013QSZZ	4- 13	BB		B	
RMOTP0036QSZZ	15- 2	BD	N	B	
RMOTS0038QSZZ	8- 25	BL	N	B	
RMPTW4100QCJJ	28- 32	AA		B	
RMPTW4102QCJJ	28- 33	AB		B	
RMPTW4103QCJJ	28- 34	AB		B	
RMPTW4330QCJJ	28- 35	AB		B	

PARTS CODE	NO.	PRICE RANK	NEW MARK	PART RANK	
RPLU-0002QSZZ	15- 25	AN		B	
RPLU-0003QSZZ	19- 29	AN		B	
RPLU-0004QSZZ	5- 11	AQ		B	
RPLU-0005QSZZ	3- 17	AQ		B	
RPLU-0010QSZZ	25- 18	AN		B	
RPLU-0015QSZZ	4- 15	AS		B	
RPLU-0035QSZZ	15- 22	AL	N	B	
{S}					
SPAKA0051RSZZ	26- 14	AC		D	
SPAKA0163RSZZ	26- 14	AC		D	
SPAKA0405QSZZ	26- 9	AN		D	
SPAKA0406QSZZ	26- 9	AS		D	
SPAKA0407QSZZ	26- 9	AS		D	
SPAKA0408QSZZ	26- 1	AN		D	
SPAKA0410QSZZ	26- 1	AQ		D	
SPAKA0411QSZZ	26- 20	AE		D	
SPAKA0421QSZZ	26- 19	AC		D	
SPAKA0429QSZZ	26- 1	AM	N	D	
SPAKA0432QSZZ	26- 23	AC	N	D	
SPAKA5116FCZZ	26- 21	AB		D	
SPAKC0402RS21	26- 10	AU	N	D	
SPAKC0402RS22	26- 10	AU	N	D	
SPAKC0402TS13	26- 10	*	N	D	
SPAKC0402TS14	26- 10	*	N	D	
SPAKC0404RS15	26- 10	AX	N	D	
SPAKC0428RSZZ	26- 10	AW	N	D	
SSAKA2347QCZZ	26- 8	AB		D	
SSAKA5003CCZZ	26- 5	AA		D	
SSAKZ0002QSZZ	26- 6	AF		D	
{T}					
TCADZ0049QSZZ	26- 7	AH		D	
TCAUA0770FCZZ	1- 19	AB		D	
TCAUH0007QSZZ	26- 22	AD		D	
TCAUH0017QSZZ	14- 32	AC		D	
TiNSA0810QSZZ	26- 7	AS	N	D	
TiNSE0778QSZZ	26- 7	AX	N	D	
TiNSE0800QSZZ	26- 7	AR	N	D	
TiNSE0817TSZZ	26- 7	*	N	D	
TiNSZ0770TSZZ	26- 7	*	N	D	
TiNSZ0771TSZZ	26- 7	*	N	D	
TiNSZ0818TSZZ	26- 7	*	N	D	
TLABH0403QSZZ	1- 11	AF	N	C	
TLABZ0058QSZZ	1- 26	AD		D	
TLABZ3568FCZZ	22- 12	AB		D	
TLABZ4047FCZZ	22- 20	AC		C	
TLABZ4201FCZZ	28- 36	AC		D	
TTAG-0002QSZZ	26- 13	AB		D	
TTAG-0006QSZZ	26- 15	AE	N	D	
{U}					
UBNDA0001FCZZ	26- 4	AA		C	
{V}					
VCCCCY1HH201J	27- 4	AA		C	
VCCCCZ1HH101J	28- 37	AA		C	
VCCCCZ1HH120J	28- 38	AA		C	
VCCCCZ1HH220J	28- 39	AA		C	
VCCCCZ1HH330J	28- 40	AA		C	
VCCCCZ1HH470J	28- 41	AA		C	
VCEAGA1CW105M	28- 42	AA		C	
VCEAGA1CW106M	28- 43	AA		C	
VCEAGA1CW226M	28- 44	AB		C	
VCEAGA1CW476M	28- 45	AB		C	
VCEAGA1EW476M	28- 46	AA		C	
VCEAGA1VW106M	28- 47	AA		C	
VCEAGA1VW476M	28- 48	AB		C	
VCEAJU1CW476M	27- 5	AB		C	
VCKYCY1CB104K	27- 6	AB		C	
VCKYCY1HB102K	27- 7	AA		C	
VCKYCY1HB104K	28- 49	AA		C	
VCKYCY1HB223K	27- 8	AC		C	
VCKYCZ1CB223K	28- 50	AB		C	
VCKYCZ1CF104Z	28- 51	AB		C	
VCKYCZ1HB102K	28- 52	AA		C	
VCKYCZ1HB222K	28- 53	AA		C	
VCKYCZ1HB821K	28- 54	AC		C	
VHDDSS133/-1	27- 9	AA		B	
"	28- 55	AA		B	
VHDKDS121+-1	28- 56	AC		B	
VHDKDS226+-1	28- 57	AC		B	
VHEMTZJ22B/-1	28- 58	AA		B	
VHi28F4BVEB85	28- 59	AX		B	
VHi74HC151M-1	27- 11	AD		B	

PARTS CODE	NO.	PRICE RANK	NEW MARK	PART RANK	
VHi74HC151M-1	28- 60	AD		B	
VHiBA6920FP-1	28- 61	AL		B	
VHiD65001AF-1	28- 62	AG		B	
VHiD65503F+-1	28- 63	AG		B	
VHiEES02L400P	28- 64	AG		B	
VHiH8S2320+-1	28- 65	AY		B	
VHiHG73C1191C	28- 66	BH		B	
VHiKA7805AP-1	28- 67	AE		B	
VHiKiA358F+-1	28- 68	AE		B	
VHiKiA393F+-1	28- 69	AE		B	
VHiL6219DS+-1	28- 70	AN		B	
VHiLC7935/-1	27- 10	AN		B	
VHiLCX244WM-1	28- 71	AG		B	
VHiM51957BFP1	28- 72	AH		B	
VHiMTD1361F-1	28- 73	AR		B	
VHiNC7ST08M-1	28- 75	AD		B	
VHiP2010ASR-1	28- 76	AN		B	
VHiTD62064AF/-	28- 77	AM		B	
VHiVHCT244M-1	28- 78	AG		B	
VHP1LHEE-002A	27- 12	AC		B	
VHP1LHLE-002A	27- 13	AC		B	
VHP3650AG2J-1	27- 14	AL		B	
VHPGP1A71A1-1	25- 15	AG		B	
"	8- 36	AG		B	
VHVCPN38/-1	28- 79	AF		B	
VRD-HT2EY151J	28- 80	AA		C	
VRD-HT2EY391J	28- 81	AA		C	
VRD-HT2EY472J	28- 82	AA		C	
VRH-ST2HB157K	14- 2	AD		C	
VRN-VT3ATR68J	28- 83	AC		C	
VRS-CY1JD101J	27- 15	AA		C	
VRS-CY1JD102J	27- 16	AA		C	
VRS-CY1JD121J	27- 17	AA		C	
VRS-CY1JD151J	27- 18	AA		C	
VRS-CY1JD152J	27- 19	AA		C	
VRS-CY1JD471J	27- 20	AA		C	
VRS-CY1JD472J	27- 21	AA		C	
VRS-CY1JD511J	27- 22	AA		C	
VRS-CZ1JD000J	28- 84	AA		C	
VRS-CZ1JD100J	28- 85	AA		C	
VRS-CZ1JD101J	28- 86	AA		C	
VRS-CZ1JD102F	28- 87	AA		C	
VRS-CZ1JD102J	28- 88	AA		C	
VRS-CZ1JD103F	28- 89	AA		C	
VRS-CZ1JD103J	28- 90	AA		C	
VRS-CZ1JD105F	28- 91	AA		C	
VRS-CZ1JD113F	28- 92	AA		C	
VRS-CZ1JD122F	28- 93	AA		C	
VRS-CZ1JD122J	28- 94	AA		C	
VRS-CZ1JD152J	28- 95	AA		C	
VRS-CZ1JD153J	28- 96	AA		C	
VRS-CZ1JD202J	28- 97	AA		C	
VRS-CZ1JD203J	28- 98	AA		C	
VRS-CZ1JD220J	28- 99	AA		C	
VRS-CZ1JD241J	28-100	AA		C	
VRS-CZ1JD242J	28-101	AA		C	
VRS-CZ1JD272J	28-102	AA		C	
VRS-CZ1JD301J	28-103	AA		C	
VRS-CZ1JD303J	28-104	AA		C	
VRS-CZ1JD330J	28-105	AA		C	
VRS-CZ1JD332J	28-106	AA		C	
VRS-CZ1JD393J	28-107	AA		C	
VRS-CZ1JD432F	28-108	AA		C	
VRS-CZ1JD471J	28-109	AA		C	
VRS-CZ1JD472J	28-110	AA		C	
VRS-CZ1JD473J	28-111	AA		C	
VRS-CZ1JD511J	28-112	AA		C	
VRS-CZ1JD563J	28-113	AA		C	
VRS-CZ1JD621J	28-114	AA		C	
VRS-CZ1JD751J	28-115	AA		C	
VRS-CZ1JD752F	28-116	AA		C	
VRS-CZ1JD752J	28-117	AA		C	
VRS-HT3DA101J	28-120	AA		C	
VRS-HT3DA102J	28-118	AA		C	
VRS-HT3DA1R0J	28-119	AB		C	
VRS-HT3DAR22J	28-121	AA		C	
VSKRA119S+-1	28-122	AB		B	
VSKRC106S+-1	28-123	AB		B	
VSKTA1281+-1	28-124	AD		B	
VSKTA1505S+-1	28-125	AC		B	
VSKTC3198+-1	28-126	AB		B	

PARTS CODE	NO.	PRICE RANK	NEW MARK	PART RANK	
【X】					
XBBS30P04000	15- 21	AA		C	
"	4- 18	AA		C	
XBBS30P08000	11- 29	AA		C	
"	19- 34	AA		C	
XBBS30P06000	15- 1	AA		C	
XBBSE30P06000	13- 14	AA		C	
XBBSE30P08000	1- 9	AA		C	
XBPS30P06ES0	20- 4	AA		C	
XBPS30P06K00	11- 17	AA		C	
XBPS30P05K00	4- 19	AA		C	
XBPS30P06KS0	19- 24	AA		C	
"	3- 16	AA		C	
"	5- 12	AA		C	
XBPS30P08KS0	12- 37	AA		C	
"	3- 24	AA		C	
XBPS30P10KS0	14- 10	AB		C	
"	3- 40	AB		C	
XBPSN40P06K00	13- 25	AA		C	
XEBSD30P06000	11- 15	AA		C	
"	19- 13	AA		C	
"	21- 5	AA		C	
XEBSD30P06KS0	18- 15	AA		C	
XEBSD30P08000	12- 51	AA		C	
"	20- 8	AA		C	
"	3- 55	AA		C	
"	4- 9	AA		C	
"	5- 6	AA		C	
"	6- 9	AA		C	
XEBSD30P10000	11- 10	AA		C	
"	11- 33	AA		C	
"	13- 35	AA		C	
"	7- 10	AA		C	
XEBSD30P12000	4- 32	AA		C	
"	9- 1	AA		C	
XEBSD30P30000	11- 11	AA		C	
XEBSD40P12000	24- 5	AA		C	
XEBSE30P06000	18- 30	AA		C	
"	7- 8	AA		C	
XEBSE30P08000	1- 3	AA		C	
"	14- 41	AA		C	
"	16- 2	AA		C	
"	17- 2	AA		C	
"	18- 8	AA		C	
"	19- 11	AA		C	
"	22- 9	AA		C	
XEBSE30P10000	12- 4	AA		C	
"	12- 44	AA		C	
"	13- 11	AA		C	
"	4- 49	AA		C	
"	6- 11	AA		C	
XEBSE30P12000	12- 40	AA		C	
"	14- 31	AA		C	
XEBSE30P14000	3- 22	AA		C	
XEBSE40P12000	11- 30	AA		C	
"	12- 35	AA		C	
"	12- 45	AA		C	
"	13- 15	AA		C	
"	1- 5	AA		C	
"	18- 32	AA		C	
"	19- 36	AA		C	
"	24- 2	AA		C	
"	3- 13	AA		C	
XEBSE40P14000	3- 14	AA		C	
XEBSE40P16000	24- 16	AA		C	
XEPSD20P10000	16- 5	AA		C	
"	17- 5	AA		C	
XEPSD30P06X00	18- 28	AA		C	
XEPSD30P08X00	3- 5	AA		C	
"	7- 21	AA		C	
XHBSD30P06000	25- 19	AA		C	
XHBSD40P08000	24- 15	AA		C	
XHBSE30P06000	11- 34	AA		C	
"	13- 3	AA		C	
"	18- 4	AA		C	
"	19- 23	AA		C	
"	4- 12	AA		C	
"	7- 7	AA		C	
"	8- 26	AA		C	
XHBSE30P08000	8- 31	AA		C	
XHBSE30P10000	3- 15	AA		C	

PARTS CODE	NO.	PRICE RANK	NEW MARK	PART RANK	
XPSSJ20-07000	12- 12	AA		C	
"	18- 10	AA		C	
"	19- 6	AA		C	
XPSSP20-07000	25- 6	AA		C	
"	5- 29	AA		C	
XPSSP20-09000	4- 24	AA		C	
XRESP20-04000	3- 35	AA		C	
XRESP30-04000	14- 39	AA		C	
XRESP30-06000	5- 24	AA		C	
"	7- 16	AA		C	
XRESP40-06000	12- 14	AA		C	
"	18- 7	AA		C	
"	19- 2	AA		C	
"	22- 7	AA		C	
"	25- 3	AA		C	
"	4- 29	AA		C	
"	5- 15	AA		C	
XRESP50-06000	12- 6	AA		C	
"	4- 20	AA		C	
"	8- 27	AA		C	
XRESP70-08000	12- 48	AA		C	
"	8- 28	AA		C	
【0】					
0AV1390000107	29- 11	AC		C	
"	30- 11	AC		C	
"	31- 10	AC		C	
0AV1390000108	29- 13	AC		C	
"	30- 13	AC		C	
"	31- 12	AC		C	
0AV1390000176	29- 8	AQ		C	
0AV1390000177	29- 14	AC		C	
"	30- 14	AC		C	
"	31- 13	AC		C	
0AV1390000178	29- 16	AG		C	
"	30- 16	AG		C	
"	31- 15	AG		C	
0AV1390000179	29- 18	AC		C	
"	30- 18	AC		C	
"	31- 17	AC		C	
0AV1390000180	29- 20	AC		C	
"	30- 20	AC		C	
"	31- 19	AC		C	
0AV1390000181	29- 15	AE		C	
"	30- 15	AE		C	
"	31- 14	AE		C	
0AV1390000182	29- 17	AG		C	
"	30- 17	AG		C	
"	31- 16	AG		C	
0AV1390000183	31- 7	AQ		C	
0AV1390000184	31- 9	AC		C	
0AV1390000197	30- 8	AR	N	C	
0AV1480000079	29- 7	AC		C	
"	30- 7	AC		C	
"	31- 6	AC		C	
0AV1480000083	29- 6	AC		C	
"	30- 6	AC		C	
"	31- 5	AC		C	
0AV1560000002	29- 4	AD		C	
"	30- 4	AD		C	
"	31- 3	AD		C	
0AV1560000003	29- 2	AH		C	
"	30- 2	AH		C	
0AV1610000091	29- 9	AC		C	
"	30- 9	AC		C	
"	31- 8	AC		C	
0AV1610000108	29- 12	AD		C	
"	30- 12	AD		C	
"	31- 11	AD		C	
0AV1610000109	29- 19	AC		C	
"	30- 19	AC		C	
"	31- 18	AC		C	
0AV1610000114	31- 20	AD		C	
0AV1690000088	29- 3	AC		C	
"	30- 3	AC		C	
"	31- 2	AC		C	
0AV1690000094	29- 5	AD		C	
"	30- 5	AD		C	
0AV1690000106	29- 1	AD		C	
"	30- 1	AD		C	
"	31- 1	AD		C	
0AV1690000110	29- 10	AD		C	

PARTS CODE	NO.	PRICE RANK	NEW MARK	PART RANK	
0AV1690000110	30- 10	AD		C	
0AV1690000111	31- 4	AD		C	
0AV2011003020	29- 51	AA		C	
"	30- 51	AA		C	
"	31- 51	AA		C	
0AV2011013010	31- 56	AA		C	
0AV2011023010	29- 60	AA		C	
"	30- 60	AA		C	
"	31- 60	AA		C	
0AV2011033010	29- 54	AA		C	
"	30- 54	AA		C	
"	31- 54	AA		C	
0AV2011033030	29- 62	AB		C	
"	30- 62	AB		C	
"	31- 62	AB		C	
0AV2011043010	29- 48	AA		C	
"	30- 48	AA		C	
0AV2011043030	31- 47	AA		C	
0AV2011053030	31- 43	AB		C	
0AV2011213030	29- 45	AB		C	
"	30- 45	AB		C	
"	31- 45	AB		C	
0AV2011533010	29- 66	AA		C	
"	30- 66	AA		C	
"	31- 66	AA		C	
0AV2012203010	29- 73	AA		C	
"	30- 73	AA		C	
"	31- 73	AA		C	
0AV2012213010	29- 63	AA		C	
"	30- 63	AA		C	
0AV2012233010	29- 49	AA		C	
"	30- 49	AA		C	
"	31- 49	AA		C	
0AV2012243010	31- 48	AA		C	
0AV2012243020	31- 61	AA		C	
0AV2012733010	31- 63	AA		C	
0AV2013333010	29- 50	AA		C	
"	30- 50	AA		C	
"	31- 50	AA		C	
0AV2013933030	29- 47	AC		C	
"	30- 47	AC		C	
0AV2014713010	29- 68	AA		C	
"	30- 68	AA		C	
"	31- 67	AA		C	
0AV2014723010	29- 65	AA		C	
"	30- 65	AA		C	
"	31- 64	AA		C	
0AV2014733010	29- 72	AA		C	
"	30- 72	AA		C	
"	31- 71	AA		C	
0AV2014743030	29- 43	AA		C	
"	30- 43	AA		C	
0AV2015603010	29- 56	AA		C	
"	30- 56	AA		C	
0AV2015633010	29- 59	AA		C	
"	30- 59	AA		C	
"	31- 59	AA		C	
0AV2016803030	29- 58	AA		C	
"	30- 58	AA		C	
"	31- 58	AA		C	
0AV2016823010	29- 64	AA		C	
"	30- 64	AA		C	
0AV2016833010	29- 55	AA		C	
"	30- 55	AA		C	
"	31- 55	AA		C	
0AV2018233020	29- 61	AB		C	
"	30- 61	AB		C	
0AV2021023052	29- 71	AC		C	
"	30- 71	AC		C	
"	31- 70	AC		C	
0AV2021043062	31- 57	AD		C	
0AV2026833062	29- 57	AD		C	
"	30- 57	AD		C	
0AV2041013010	29- 53	AC		B	
"	30- 53	AC		B	
0AV2041013020	29- 44	AC		B	
"	30- 44	AC		B	
"	31- 44	AC		B	
0AV2041213030	29- 46	AC		B	
"	30- 46	AC		B	
"	31- 46	AC		B	

PARTS CODE	NO.	PRICE RANK	NEW MARK	PART RANK	
0AV2044703010	31- 53	AB		B	
0AV2091083042	29- 52	AC		C	
"	30- 52	AC		C	
"	31- 52	AC		C	
0AV2990007000	29- 67	AC		C	
"	30- 67	AC		C	
"	31- 66	AC		C	
0AV2990082000	29- 69	AC		C	
"	30- 69	AC		C	
"	31- 68	AC		C	
0AV2990083000	29- 70	AC		C	
"	30- 70	AC		C	
"	31- 69	AC		C	
0AV3000143999	29- 42	AD		B	
"	30- 42	AD		B	
"	31- 42	AD		B	
0AV3001015090	29- 37	AD		B	
"	30- 37	AD		B	
"	31- 37	AD		B	
0AV3001020000	29- 41	AE		B	
"	30- 41	AE		B	
"	31- 41	AE		B	
0AV3020143999	29- 38	AD		B	
"	30- 38	AD		B	
"	31- 38	AD		B	
0AV3021815090	29- 40	AC		B	
"	30- 40	AC		B	
"	31- 40	AC		B	
0AV3040494000	29- 39	AP		B	
"	30- 39	AP		B	
"	31- 39	AP		B	
0AV3042605000	31- 36	AN		B	
0AV3050019000	29- 26	AF		B	
"	30- 26	AF		B	
"	31- 26	AF		B	
0AV3050036000	29- 25	AF		B	
"	30- 25	AF		B	
"	31- 25	AF		B	
0AV3050086000	29- 21	AB		B	
"	30- 21	AB		B	
"	31- 21	AB		B	
0AV3050097000	29- 29	AG		B	
"	30- 29	AG		B	
"	31- 29	AG		B	
0AV3050098000	29- 31	AG		B	
"	30- 31	AG		B	
"	31- 31	AG		B	
0AV3050099000	29- 30	AD		B	
"	30- 30	AD		B	
"	31- 30	AD		B	
0AV3060027000	29- 22	AH		B	
"	30- 22	AH		B	
"	31- 22	AH		B	
0AV3060043000	29- 23	AC		B	
"	30- 23	AC		B	
"	31- 23	AC		B	
0AV3070056000	29- 28	AD		B	
"	30- 28	AD		B	
"	31- 28	AD		B	
0AV3070057000	29- 33	AC		B	
"	30- 33	AC		B	
"	31- 33	AC		B	
0AV3070058000	29- 24	AC		B	
"	30- 24	AC		B	
"	31- 24	AC		B	
0AV3070061000	29- 32	AC		B	
"	30- 32	AC		B	
"	31- 32	AC		B	
0AV3070074000	29- 34	AC		B	
"	30- 34	AC		B	
"	31- 34	AC		B	
0AV3070081000	29- 35	AC		B	
"	30- 35	AC		B	
"	31- 35	AC		B	
0AV3070085000	29- 27	AC		B	
"	30- 27	AC		B	
"	31- 27	AC		B	
0AV3082561300	29- 83	AF		B	
"	30- 83	AF		B	
"	31- 82	AF		B	
0AV3090071000	29- 87	AN		B	



#### CAUTION FOR BATTERY REPLACEMENT

- (Danish)                      ADVARSEL !  
Lithiumbatteri - Eksplosionsfare ved fejlagtig håndtering.  
Udskiftning må kun ske med batteri  
af samme fabrikat og type.  
Levér det brugte batteri tilbage til leverandoren.
- (English)                      Caution !  
Danger of explosion if battery is incorrectly replaced.  
Replace only with the same or equivalent type  
recommended by the manufacturer.  
Dispose of used batteries according to manufacturer's instructions.
- (Finnish)                      VAROITUS  
Paristo voi räjähtää, jos se on virheellisesti asennettu.  
Vaihda paristo ainoastaan laitevalmistajan suosittelemaan  
tyyppiin. Hävitä käytetty paristo valmistajan ohjeiden  
mukaisesti.
- (French)                      ATTENTION  
Il y a danger d'explosion s'il y a remplacement incorrect  
de la batterie. Remplacer uniquement avec une batterie du  
même type ou d'un type équivalent recommandé par  
le constructeur.  
Mettre au rebut les batteries usagées conformément aux  
instructions du fabricant.
- (Swedish)                      VARNING  
Explosionsfara vid felaktigt batteribyte.  
Använd samma batterityp eller en ekvivalent  
typ som rekommenderas av apparattillverkaren.  
Kassera använt batteri enligt fabrikantens  
Instruktion.
- (German)                      Achtung  
Explosionsgefahr bei Verwendung inkorrektter Batterien.  
Als Ersatzbatterien dürfen nur Batterien vom gleichen Typ oder  
vom Hersteller empfohlene Batterien verwendet werden.  
Entsorgung der gebrauchten Batterien nur nach den vom  
Hersteller angegebenen Anweisungen.

#### CAUTION FOR BATTERY DISPOSAL

- (For USA, CANADA)  
Contains lithium-ion battery. Must be disposed of properly.  
Remove the battery from the product and contact  
federal or state environmental  
agencies for information on recycling and disposal options.

# SHARP

**COPYRIGHT © 2002 BY SHARP CORPORATION**

All rights reserved.

Printed in Japan.

No part of this publication may be reproduced,  
stored in a retrieval system, or transmitted.

In any form or by any means,  
electronic, mechanical, photocopying, recording, or otherwise,  
without prior written permission of the publisher.

**SHARP CORPORATION**  
**Digital Document Systems Group**  
**Products Quality Assurance Department**  
**Yamatokoriyama, Nara 639-1186, Japan**  
2002 July Printed in Japan ⓘ