

ADF for GP605/ GP605V/GP600

PARTS CATALOG

REVISION 0

F24-7501	(AB SIZE)	ZRD00001 -
F24-7511	(A/INCH SIZE)	ZRC00001 -
F24-7521	(A SIZE)	ZRB00001 -
F24-7531	(AB/INCH SIZE)	ZRE00001 -

Canon

NOV. 1998

FY8-31DV-000

PREFACE

This Parts Catalog contains listings of parts used in the Canon ADF for GP605/GP605V/GP600. Diagrams are provided with the listings to aid the service technician in identifying clearly, the item to be ordered.

Whenever ordering parts, consult this Parts Catalog for all of the information pertaining to each item. Be sure to include, in the Parts Request, the full item description, the item part number, and the quantity.

Canon Inc.

Office Imaging Products Technical Support Dept.1
Office Imaging Products Technical Support Div.
5-1, Hakusan 7-chome,
Toride-shi, Ibaraki 302-8501, Japan

COPYRIGHT © 1998 CANON INC.

Printed in Japan

Imprimé au Japon

Use of this manual should be strictly supervised to avoid disclosure of confidential information.

CONTENTS

PA. ASSEMBLY LOCATION DIAGRAM

P10. EXTERNAL COVERS, PANELS, ETC.

P11. FRAME ASSEMBLY

P12. PICK-UP TRAY ASSEMBLY

P13. UPPER COVER ASSEMBLY

P20. BELT MOTOR ASSEMBLY

P21. SEPARATION MOTOR ASSEMBLY

P30. PAPER PICK-UP ASSEMBLY

P31. SEPARATION ASSEMBLY

P35. PAPER DELIVERY ASSEMBLY

P36. MANUAL TRAY ASSEMBLY

P37. DELIVERY LOWER GUIDE ASSEMBLY

P90. ADF CONTROLLER PCB ASSEMBLY

P91. PICK-UP TRAY PCB ASSEMBLY

PB. LIST OF CONNECTORS

C. LIST OF STANDARD FASTENERS

PD. NUMERICAL INDEX

FIGURE PA ASSMEBLY LOCATION DIAGRAM

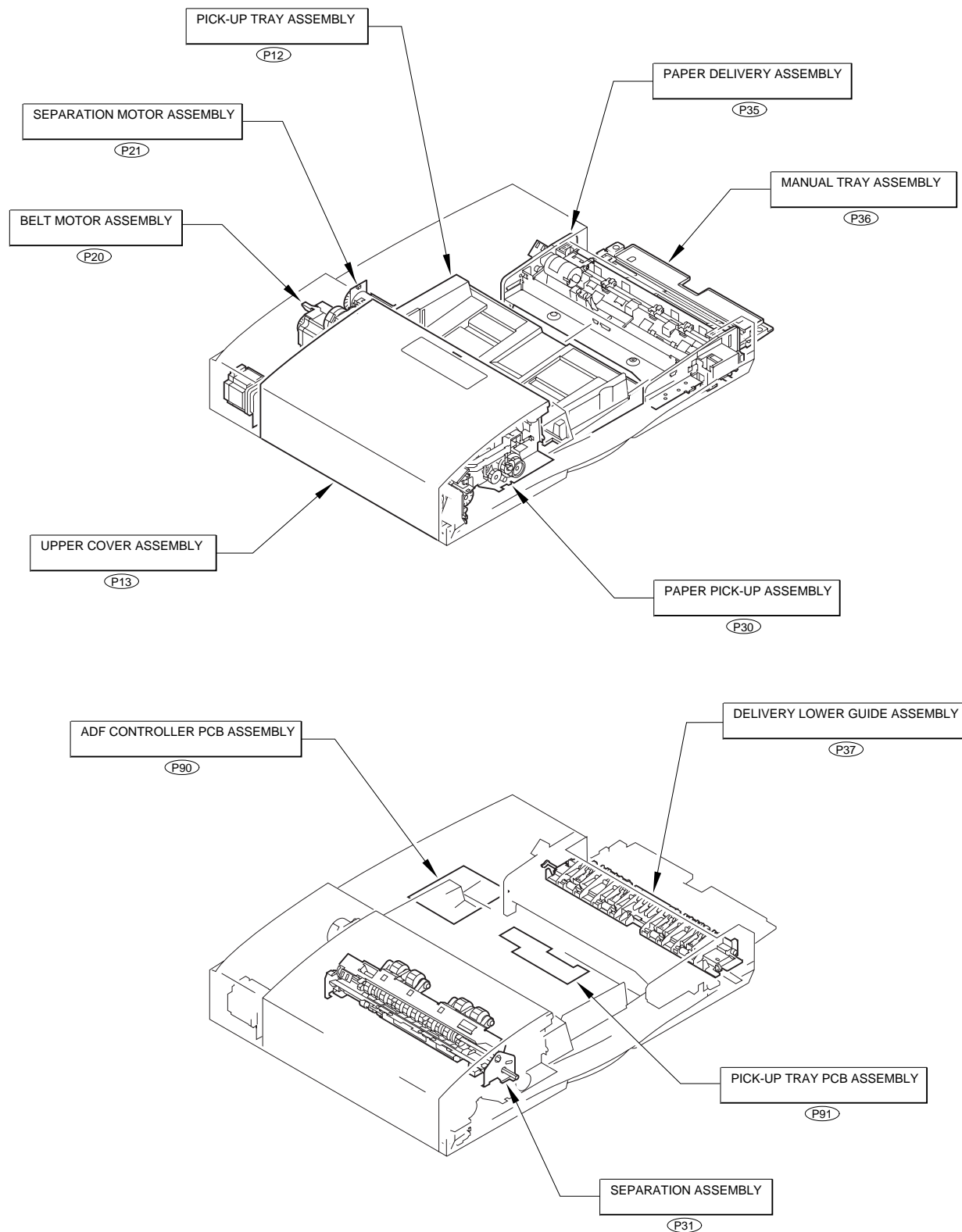


FIGURE P10 EXTERNAL COVERS, PANELS, ETC.

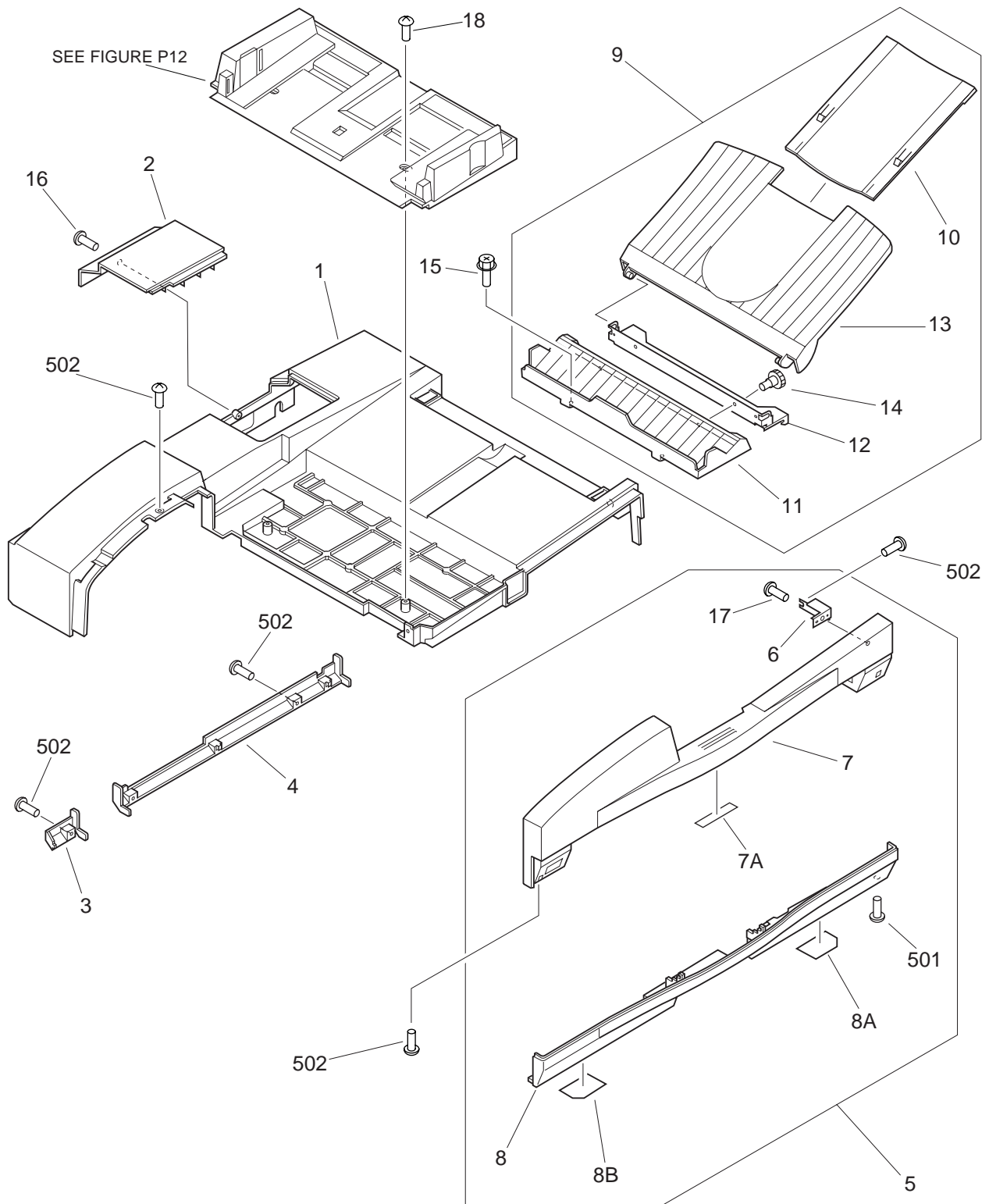
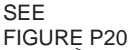


FIGURE & KEY NO.	PART NUMBER	R A N K	Q T Y	DESCRIPTION	SERIAL NUMBER / REMARKS
P10 -	NPN		RF	EXTERNAL COVERS, PANELS, ETC.	
1	FB4-7741-000		1	COVER, MAIN	
2	FB4-7744-000		1	COVER, SMALL	
3	FB4-7753-000		1	COVER, REAR, LEFT	
4	FB4-7754-000		1	COVER, REAR, RIGHT	
5	FG6-2817-000		1	FRONT COVER ASSEMBLY	
6	FB4-7751-000		1	MOUNT, FRONT COVER	
7	FF5-8108-000		1	COVER, FRONT, UPPER	
7A	FC2-3139-000		1	DAMPER	
8	FF5-8109-000		1	COVER, FRONT, LOWER	
8A	FB4-8053-000		1	LABEL, JAM, RIGHT	
8B	FB4-8052-000		1	LABEL, JAM, LEFT	
9	FG6-2739-000		1	DELIVERY TRAY ASSEMBLY	
10	FB3-3143-020		1	TRAY 2, COPY	
11	FB4-7738-000		1	TRAY, DELIVERY, 1	
12	FB4-7739-000		1	TRAY, DELIVERY, 2	
13	FB4-7740-000		1	TRAY, DELIVERY, 3	
14	FB4-7752-000		2	KNOB, COIN SLOT	
15	XA9-0643-000		2	SCREW,RS,M4X10	
16	XA9-0606-000		1	SCREW, M4X10	
17	XA9-0605-000		1	SCREW,P,M4X8	
18	XA9-0780-000		2	SCREW,P,M4X12	
501	XB6-7400-606		2	SCREW,TP,M4X6	
502	XB1-2400-606		12	SCREW,MACH.,TRUSS HEAD,M4X6	

FRAME ASSEMBLY(1/2)



FRAME ASSEMBLY(2/2)



FIGURE & KEY NO.	PART NUMBER	R A N K	Q T Y	DESCRIPTION	SERIAL NUMBER / REMARKS
P11 -	NPN		RF	FRAME ASSEMBLY	
1	FA3-3129-030		2	ELIMINATOR, STATIC CHARGE	
2	FB4-7763-000		2	CAM, RELEASE	
3	FM6-2249-000		1	RELEASE LEVER UNIT	
4	WG8-5421-000		1	PHOTO-INTERRUPTER	PI4 J124
5	FB4-7782-000		1	ROLLER, BELT DRIVE	
6	FB4-7789-000		10	ARM, ROLLER	
7	FB4-8036-000		1	SUPPORT, LEVER	
8	FC1-3044-000		2	FOOT, RUBBER, FRONT	
9	FC2-1191-000		2	SPACER	
10	FC2-1204-000		4	ROLLER	
11	FC2-1206-000		10	ROLLER	
12	FC2-1209-000		1	SUPPORT, HANDLE	
13	FB4-8065-000		1	BELT, DOCUMENT FEED ,C	
14	FS1-1046-000		1	BUSHING	
15	FS1-9102-000		6	SCREW, STEPPED, M3	
16	FS1-9199-000		2	SCREW, STEPPED, M4	
17	FS4-2360-000		4	SPRING, TENSION	
18	FS4-2362-000		1	SPRING, TENSION	
19	FS5-3733-000		1	PULLEY, 46T	
20	FS7-2022-000		2	SPRING, TENSION	
21	FS7-2025-000		6	SPRING, TENSION	
22	FS7-2026-000		4	SPRING, TENSION	
23	XA9-0679-000		8	SCREW, MACH., FLAT HEAD, M3X4	
24	FG2-9371-000		1	DELIVERY CABLE	J2, 21, 27
25	XD9-0151-000		4	WASHER	
26	XG9-0237-000		4	BEARING, BALL	
27	FB4-7783-000		1	SHAFT, ROLLER	
28	FC2-1195-000		1	BUSHING	
29	FC2-1196-000		2	ROLLER, TURN	

FIGURE & KEY NO.	PART NUMBER	R A N K	Q T Y	DESCRIPTION	SERIAL NUMBER / REMARKS
P11 - 30	FC2-1197-000		2	BUSHING	
31	FG6-2792-000		1	RELEASE CAM ASSEMBLY	
32	FB4-7761-000		1	HOLDER, RELEASE	
33	FB4-7762-000		1	SPRING, LEAF	
34	FG2-9374-000		1	DELIVERY LOCK CABLE	J3,31
35	FB4-7757-000		1	SUPPORT, JOINT	
36	XA9-0732-000		AR	SCREW,RS,M4X8	
37	FB4-7759-000		1	SHAFT, JOINT	
38	FA3-4725-000		2	CATCH, MAGNET	
39	FB4-7786-000		1	HANDLE	
40	FB4-7787-000		1	PLATE, GROUNDING	
41	FC2-1208-000		2	NUT, CATCH	
42	FF5-8131-000		1	PLATE, TENSION, FRONT	
43	FF5-8132-000		1	PLATE, TENSION, REAR	
44	FB4-7003-000		6	SPRING, COMPRESSION	
45	FB4-7788-000		2	GUIDE, BELT	
46	FG6-2800-000		1	UPPER COVER SENSOR ASSEMBLY	
47	VT2-0006-014		5	SUPPORT, PCB	
48	FB4-7791-000		1	FLAG, UPPER COVER SENSOR	
49	FB4-7792-000		1	SPRING, TORSION	
50	FS1-1510-000		1	BUSHING	
51	FS5-9570-000		1	SCREW,STEPPED,M4	
52	WG8-5362-000		1	IC, TLP1241, PHOTO-INTERRUPTER	PI10 J125
53	FG6-2801-000		1	REVERSE MOTOR DRIVER ASSEMBLY	
54	FG2-9370-000		1	INTERFACE CABLE	J0,1,4
55	XF9-0685-000		1	BELT, TIMING, 113T	
56	FG6-2802-000		1	BELT MOTOR DRIVER ASSEMBLY	
57	XF2-1605-660		1	BELT, TIMING, 56T	
58	FB4-8027-000		1	HINGE, LEFT	
59	FF5-8210-000		1	PILLAR, LEFT	

FIGURE & KEY NO.	PART NUMBER	R A N K	Q T Y	DESCRIPTION	SERIAL NUMBER / REMARKS
P11 - 60	FA5-5499-000		1	SCREW, ADJUSTING	
61	FB4-8028-000		1	HINGE, RIGHT	
62	FF5-8211-000		1	PILLAR, RIGHT	
63	FS5-9571-000		4	SCREW, STEPPED, M4	
64	FB4-7004-000		6	ROLLER	
65	FG6-2793-000		2	JOINT HOOK ASSEMBLY	
66	FB4-7703-000		1	LINK, DRIVE, B	
67	FB4-7747-000		1	GUIDE, CABLE, 1	
68	FB4-7748-000		1	GUIDE, CABLE, 2	
69	FB4-7749-000		1	GUIDE, CABLE, 3	
70	FB4-7750-000		1	PLATE, CABLE SUPPORT	
71	FB4-7755-000		1	JOINT, LEFT	
72	FB4-7756-000		1	JOINT, RIGHT	
73	FB4-7772-000		1	PLATE, CLOCK SENSOR	
74	FB4-7793-000		2	PIN, HINGE	
75	FB4-8037-000		2	PLATE, SUPPORT	
76	FS2-1617-000		2	BEARING, BALL	
77	FS5-3736-000		1	PULLEY, 27T	
78	FS7-0319-000		1	GEAR, 14T/PULLEY, 15T	
79	FS7-2024-000		1	SPRING, TENSION	
80	WT2-5565-000		1	CLAMP, CABLE	
501	XD3-2200-182		8	PIN, DOWEL	
502	XD3-1200-162		1	PIN, SPRING	
503	XB1-2400-606		1	SCREW, MACH., TRUSS HEAD, M4X6	
504	XD2-2100-802		6	RING, GRIP	
505	XB1-2300-606		1	SCREW, MACH., TRUSS HEAD, M3X6	
506	XD2-1100-642		7	RING, E	
507	XD2-1100-202		1	RING, E	
508	XB2-8300-809		4	SCREW, W/WASHER, M3X8	
509	XG2-4010-405		2	BALL BEARING	

FIGURE & KEY NO.	PART NUMBER	R A N K	Q T Y	DESCRIPTION	SERIAL NUMBER / REMARKS
P11 - 510	XB7-2100-409		1	NUT,HEX,M4	
511	XD2-1100-322		2	RING,E	
512	XB6-7400-809		4	SCREW,TP,M4X8	
513	XB6-7400-606		1	SCREW,TP,M4X6	
514	XB1-2400-609		AR	SCREW,MACH.,TRUSS HEAD,M4X6	
515	XB6-2400-409		2	SETSCREW,M4X4	
516	XB1-2300-409		2	SCREW,MACH.,TRUSS HEAD,M3X4	
517	XB1-2401-609		4	SCREW,MACH.,TRUSS HEAD,M4X16	
518	XD3-2200-122		2	PIN,DOWEL	
519	XB1-2400-809		2	SCREW,MACH.,TRUSS HEAD,M4X8	
520	XB1-2400-606		1	SCREW,MACH.,TRUSS HEAD,M4X6	
521	XD2-1100-402		1	RING,E	
522	XB1-2400-409		3	SCREW,MACH.,TRUSS HEAD,M4X4	

FIGURE P12 PICK-UP TRAY ASSEMBLY

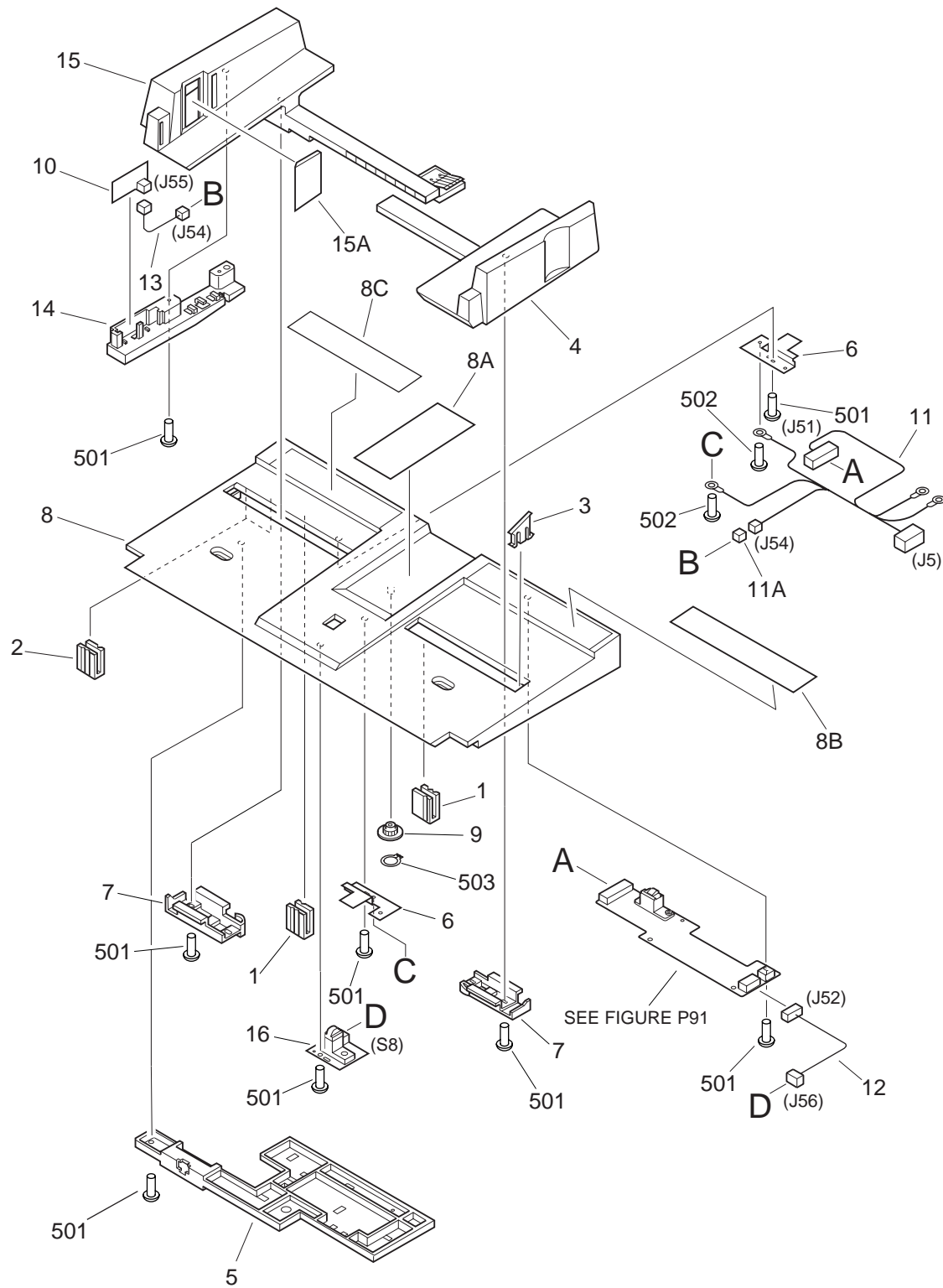
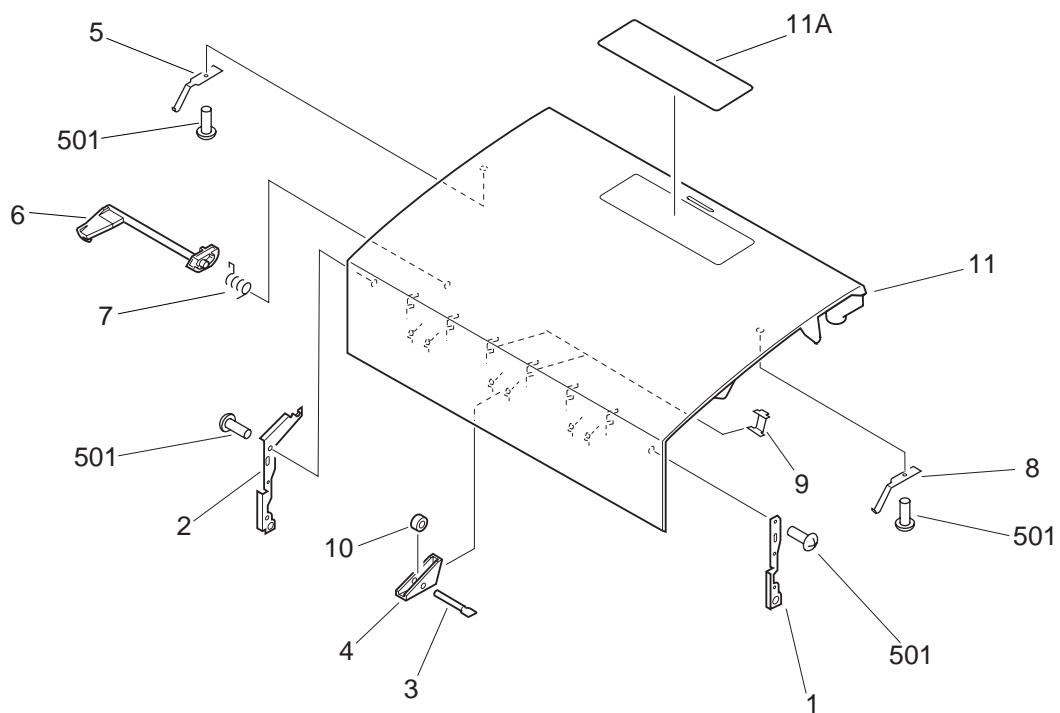


FIGURE & KEY NO.	PART NUMBER	R A N K	Q T Y	DESCRIPTION	SERIAL NUMBER / REMARKS
P12 - 1	FG6-2726-000		1	PICK-UP TRAY ASSEMBLY	AB SIZE
	FG6-2727-000		1	PICK-UP TRAY ASSEMBLY	A/INCH SIZE
	FG6-2728-000		1	PICK-UP TRAY ASSEMBLY	A SIZE
	FG6-2729-000		1	PICK-UP TRAY ASSEMBLY	AB/INCH SIZE
	FB4-7710-000		2	BLOCK, TRAY LACK, A4R	
2	FB4-7711-000		2	BLOCK, TRAY LACK, LTR-R	
3	FB4-7712-000		1	BLOCK, TRAY LIMIT	
4	FF5-8214-000		1	GUIDE, SLIDE, FRONT	
5	FB4-7719-000		1	COVER, SLIDE SWITCH	
6	FB4-7723-000		2	PLATE, GROUNDING	
7	FC1-6179-000		2	CLAMP, GUIDE	
8	FF5-8120-000		1	TRAY, PICK-UP	AB SIZE
	FF5-8121-000		1	TRAY, PICK-UP	A/INCH SIZE
	FF5-8122-000		1	TRAY, PICK-UP	A SIZE
	FF5-8123-000		1	TRAY, PICK-UP	AB/INCH SIZE
8A	FB4-8040-000		1	LABEL, DOCUMENT SET	AB SIZE
	FB4-8041-000		1	LABEL, DOCUMENT SET	EXCEPT AB SIZE
8B	FB4-8042-000		1	LABEL, DOCUMENT SIZE	AB SIZE
	FB4-8043-000		1	LABEL, DOCUMENT SIZE	A/INCH SIZE
	FB4-8044-000		1	LABEL, DOCUMENT SIZE	A SIZE
8C	FB4-8045-000		1	LABEL, DOCUMENT SIZE	AB/INCH SIZE
	FB4-8062-000		1	LABEL, COVER	
	FS4-0177-000		1	GEAR, 16T	
	FG2-9368-000		1	INDICATOR PCB ASSEMBLY	
	FG2-9375-000		1	PICK-UP TRAY CABLE	J5,51,54
11A	VS1-5057-002		1	CONNECTOR, SNAP TIGHT	J54
12	FG2-9376-000		1	PICK-UP TRAY SUB CABLE	J52,56
13	FG2-9377-000		1	DISPLAY LED CABLE	J54,55
14	FB4-7718-000		1	HOLDER, PCB, DISPLAY LED	
15	FF5-8106-000		1	GUIDE, SLIDE, REAR	AB SIZE

FIGURE P13 UPPER COVER ASSEMBLY



NOTE : This assembly is included in the assembly shown in Figure P30.

FIGURE & KEY NO.	PART NUMBER	R A N K	Q T Y	DESCRIPTION	SERIAL NUMBER / REMARKS
P13 - 1 2 3	FG6-2740-000		1	UPPER COVER ASSEMBLY	AB SIZE SEE NOTE
	FG6-2741-000		1	UPPER COVER ASSEMBLY	EXCEPT AB SIZE SEE NOTE
	FB4-7601-000		1	PLATE, UPPER COVER, FRONT	
	FB4-7602-000		1	PLATE, UPPER COVER, REAR	
	FB4-7604-000		3	ROD	
4	FB4-7605-000		3	GUIDE	
5	FB4-7606-000		1	SPRING, LEAF	
6	FB4-7607-000		1	FLAG, SENSOR, PRE-REVERSE	
7	FB4-8030-000		1	SPRING, TORSION	
8	FB4-8057-000		1	SPRING, LEAF	
9	FC2-2146-000		6	SPRING, LEAF	
10	FC2-3245-000		3	ROLLER	
11	FF5-8206-000		1	COVER, UPPER	AB SIZE
	FF5-8207-000		1	COVER, UPPER	EXCEPT AB SIZE
11 A	FB4-5936-000		1	LABEL, CAUTION	AB SIZE
	FB4-5939-000		1	LABEL, CAUTION	EXCEPT AB SIZE
501	XB4-7300-609		6	SCREW,TAPPING,TRUSS HEAD,M3X6	

FIGURE P20 BELT MOTOR ASSEMBLY

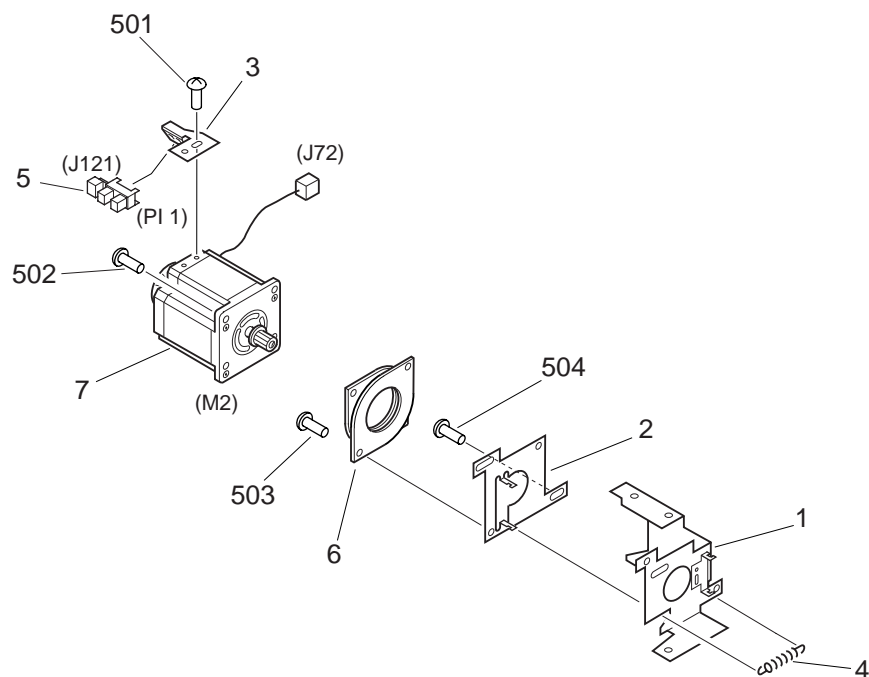
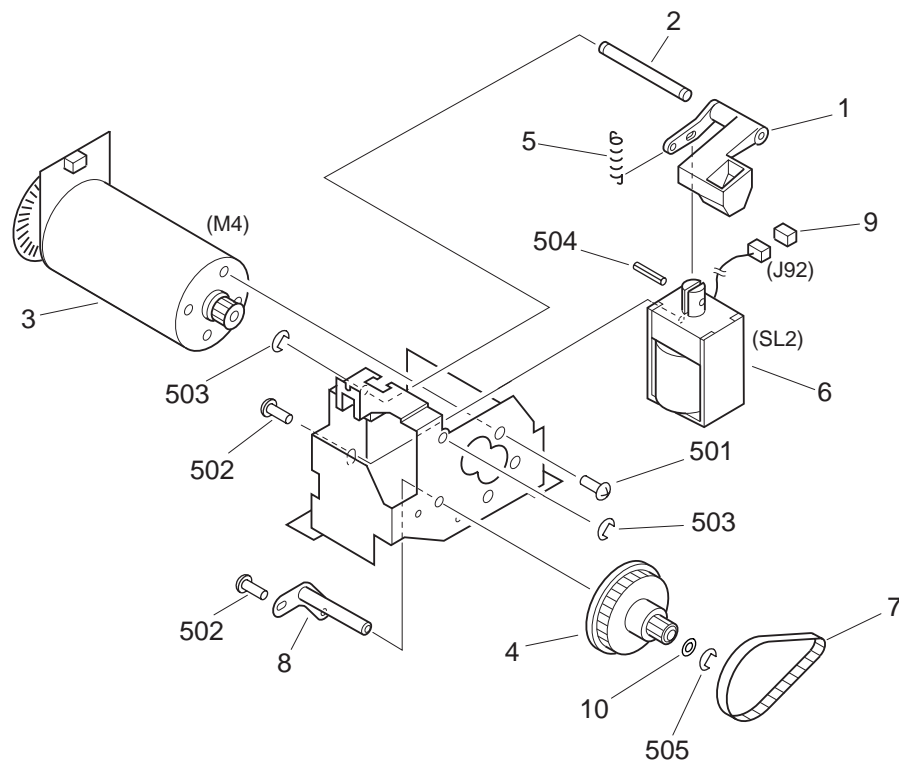


FIGURE & KEY NO.	PART NUMBER	R A N K	Q T Y	DESCRIPTION	SERIAL NUMBER / REMARKS
P20 -	FG6-2798-000		1	BELT MOTOR ASSEMBLY	
1	FB4-7765-000		1	MOUNT, MOTOR	
2	FB4-7766-000		1	PLATE, TENSION	
3	FB4-7767-000		1	MOUNT, SENSOR	
4	FS7-2023-000		2	SPRING, TENSION	
5	WG8-5362-000		1	IC, TLP1241, PHOTO-INTERRUPTER	PI1 J121
6	XH9-0111-000		1	DAMPER	
7	FH6-1634-000		1	MOTOR, STEPPING, DC2.15V	M2 J72
501	XB6-7300-409		1	SCREW,TP,M3X4	
502	XB1-2400-809		2	SCREW,MACH.,TRUSS HEAD,M4X8	
503	XB1-2400-609		2	SCREW,MACH.,TRUSS HEAD,M4X6	
504	XB6-7400-609		2	SCREW,TP,M4X6	

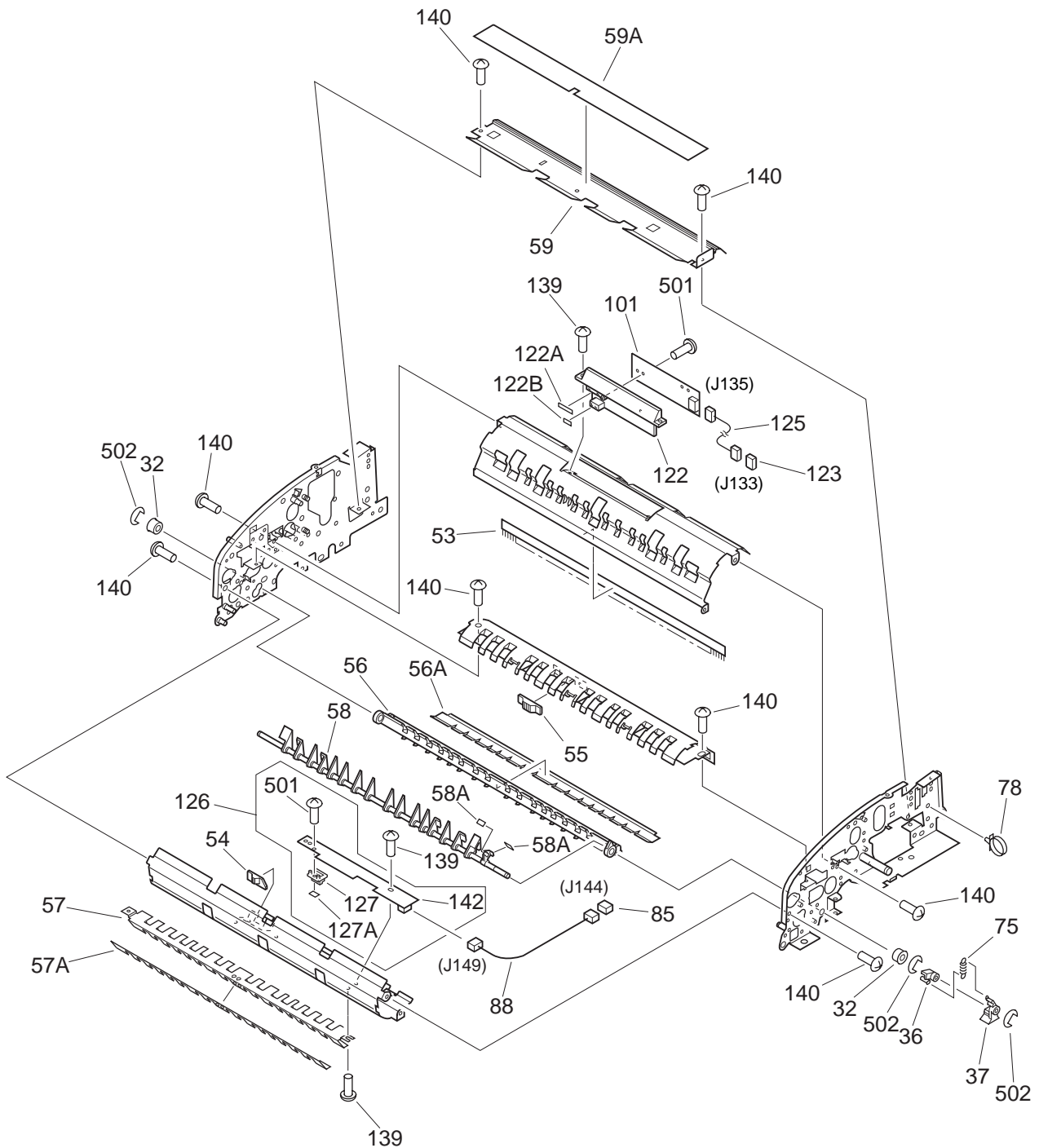
FIGURE P21 SEPARATION MOTOR ASSEMBLY



NOTE: This assembly does not include the parts shown with key No. 9.

FIGURE & KEY NO.	PART NUMBER	R A N K	Q T Y	DESCRIPTION	SERIAL NUMBER / REMARKS
P21 -	FG6-2799-000		1	SEPARATION MOTOR ASSEMBLY	
1	FB4-7769-000		1	LINK, SHUTTER, B	
2	FB4-7770-000		1	ROD	
3	FH6-1637-000		1	MOTOR, DC24V	M4
4	FS5-3732-000		1	PULLEY, 18T/55T	
5	FS7-2027-000		1	SPRING, TENSION	
6	FH7-5874-000		1	SOLENOID, DC24V	SL2 J92
7	XF9-0543-000		1	BELT, TIMING	
8	FF5-8212-000		1	MOUNT, PULLEY	
9	VS1-5057-003		1	CONNECTOR, SNAP TIGHT	J92 SEE NOTE
10	FS5-6323-000		1	FLANGE	
501	XB1-2400-409		3	SCREW,MACH.,TRUSS HEAD,M4X4	
502	XB1-2300-409		4	SCREW,MACH.,TRUSS HEAD,M3X4	
503	XD2-1100-322		2	RING,E	
504	XD3-1200-142		1	PIN,SPRING	
505	XD2-1100-422		1	RING,E	

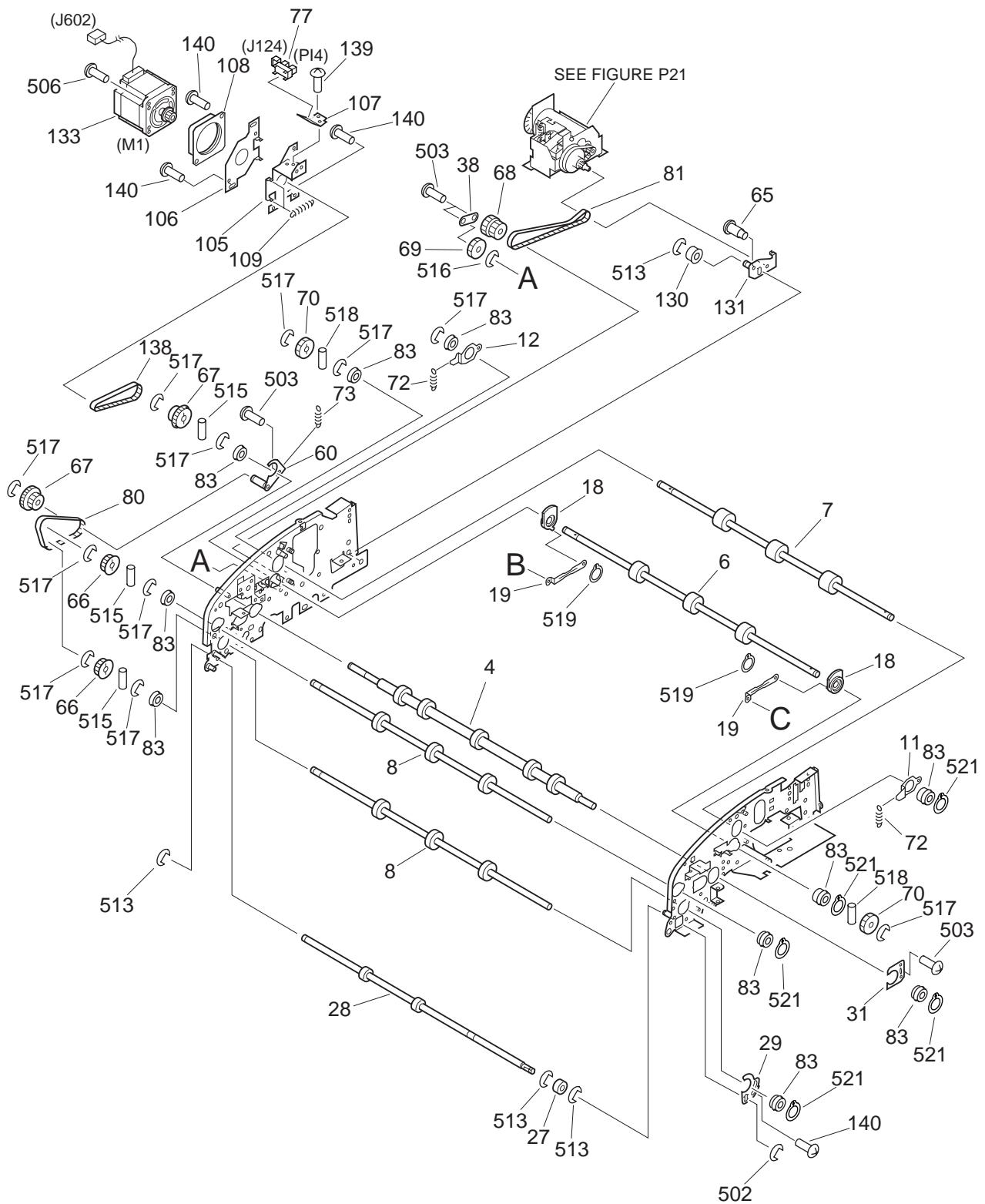
FIGURE P30 PAPER PICK-UP ASSEMBLY (1/4)



NOTE1: This assembly does not include the parts shown with key No. 144 and 145.

NOTE2: This assembly includes the assembly shown in Figure P13 and P31.

FIGURE P30 PAPER PICK-UP ASSEMBLY (2/4)



PAPER PICK-UP ASSEMBLY (3/4)



PEPAR PICK-UP ASSEMBLY (4/4)

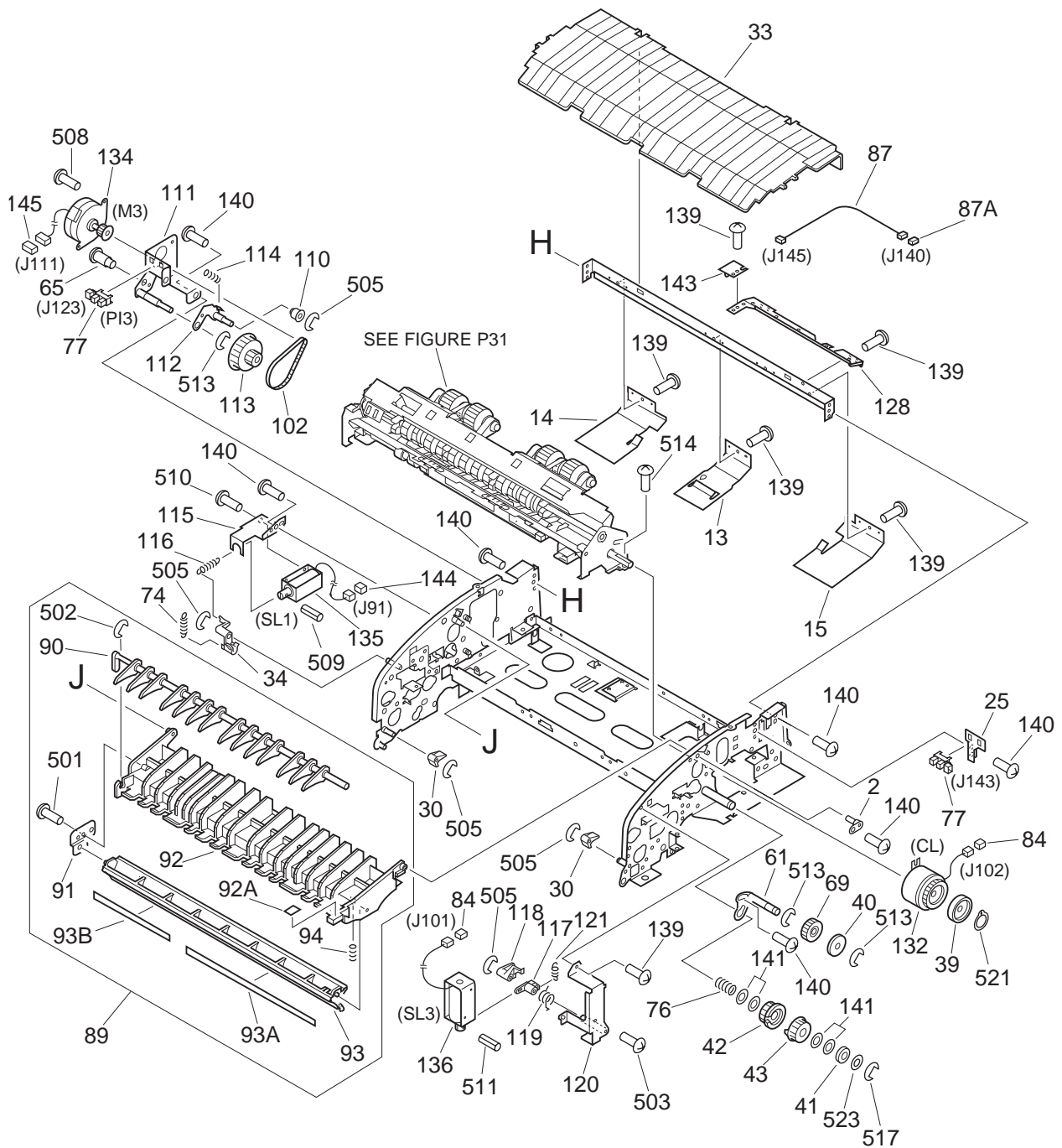


FIGURE & KEY NO.	PART NUMBER	R A N K	Q T Y	DESCRIPTION	SERIAL NUMBER / REMARKS
P30 -	FG6-2730-000		1	PAPER PICK-UP ASSEMBLY	AB SIZE SEE NOTE
	FG6-2731-000		1	PAPER PICK-UP ASSEMBLY	EXCEPT AB SIZE SEE NOTE
	1 FB4-7556-000		1	SHAFT, STOPPER	
	2 FB4-7557-000		2	PLATE, POSITIONING	
	3 FB4-7559-000		1	GUIDE, PICK-UP CABLE	
4	FB4-7560-000		1	ROLLER, REGISTRATION	
5	FB4-7561-000		1	ROLLER, REGISTRATION PRESSURE	
6	FB4-7562-000		1	ROLLER, PICK-UP	
7	FB4-7563-000		1	ROLLER, PICK-UP PRESSURE	
8	FB4-7564-000		2	ROLLER, REVERSE	
9	FB4-7565-000		1	PLATE, TENSION, FRONT	
10	FB4-7566-000		1	PLATE, TENSION, REAR	
11	FB4-7567-000		1	PLATE, PICK-UP TENSION, FRONT	
12	FB4-7568-000		1	PLATE, PICK-UP TENSION, REAR	
13	FB4-7570-000		1	UPPER GUIDE, PICK-UP, A	
14	FB4-7571-000		1	UPPER GUIDE, PICK-UP, B	
15	FB4-7572-000		1	UPPER GUIDE, PICK-UP, C	
16	FB4-7576-000		1	ARM, RELEASE, FRONT	
17	FB4-7577-000		1	ARM, RELEASE, REAR	
18	FB4-7578-000		2	CAM, PICK-UP RELEASE	
19	FB4-7579-000		2	LINK, PICK-UP RELEASE	
20	FB4-7584-000		1	LINK, FRONT	
21	FB4-7585-000		1	LINK, REAR	
22	FB4-7586-000		1	ARM, FRONT	
23	FB4-7587-000		1	ARM, REAR	
24	FB4-7588-000		2	HOLDER, ARM	
25	FB4-7589-000		1	HOLDER, SENSOR	
26	FB4-7590-000		1	GUARD, SENSOR	
27	FB4-7591-000		3	ROLLER, LOWER GUIDE	
28	FB4-7592-000		1	SHAFT, ROLLER, LOWER GUIDE	

FIGURE & KEY NO.	PART NUMBER	R A N K	Q T Y	DESCRIPTION	SERIAL NUMBER / REMARKS
P30 - 29	FB4-7593-000		1	PLATE, REVERSE ADJUSTING	
30	FB4-7594-000		2	LEVER, ROLLER RELEASE	
31	FB4-7595-000		1	PLATE, REGISTRATION ADJUSTING	
32	FB4-7596-000		2	BUSHING	
33	FB4-7599-000		1	COVER, INTERNAL	
34	FB4-7620-000		1	LINK, SOLENOID	
35	FB4-7625-000		1	STOPPER, LOWER GUIDE	
36	FB4-7656-000		1	LINK, DEFLECTOR	
37	FB4-7658-000		1	LINK, A	
38	FB4-7660-000		1	SUPPORT PLATE, GEAR, REAR	
39	FB4-7662-000		1	RING, CLUTCH	
40	FB4-7663-000		1	RING, GEAR, A	
41	FB4-7664-000		1	RING, GEAR, B	
42	FB4-7669-000		1	GEAR, 24T	
43	FB4-7670-000		1	GEAR, 24T	
44	FB4-7745-000		1	GUIDE, CABLE, 1	
45	FB4-7746-000		1	GUIDE, CABLE, 2	
46	FB4-7768-000		1	LINK, SHUTTER, A	
47	FB4-7794-000		1	ARM, COVER, FRONT	
48	FB4-7795-000		1	ARM, COVER, REAR	
49	FB4-8031-000		1	SPRING, TORSION	
50	FB4-8032-000		1	SPRING, TORSION	
51	FB4-8033-000		1	SPRING, TORSION	
52	FC2-1351-000		1	DISK, CLOCK	
53	FC1-7810-000		1	ELIMINATOR, STATIC CHARGE	
54	FB4-7653-000		1	PRISM, B	
55	FB4-7652-000		1	PRISM, A	
56	FF5-8089-000		1	GUIDE, CENTER	
56A	FB4-7574-000		1	SHEET	
57	FF5-8090-000		1	GUIDE, PRE-REVERSE	

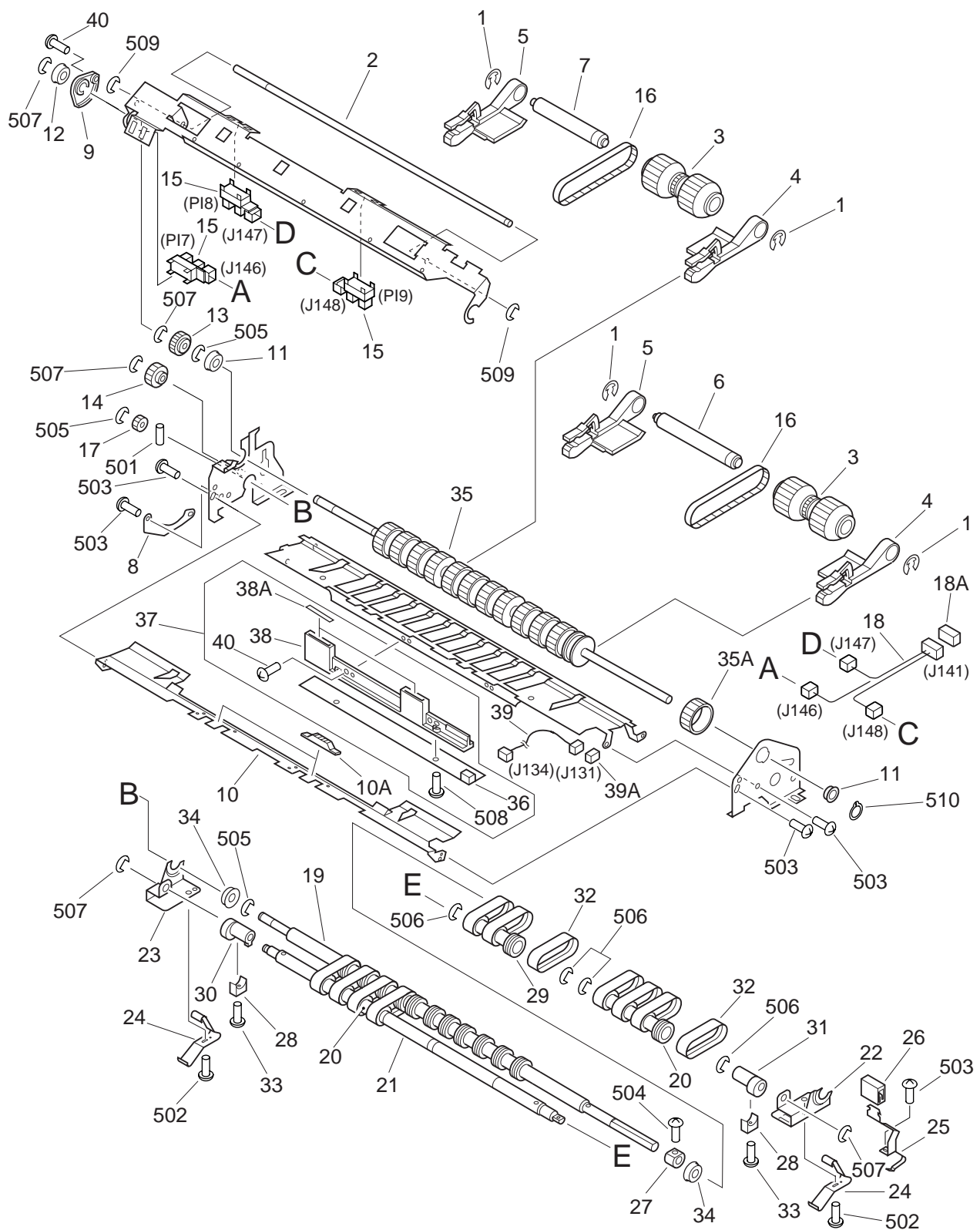
FIGURE & KEY NO.	PART NUMBER	R A N K	Q T Y	DESCRIPTION	SERIAL NUMBER / REMARKS
P30 - 57A	FB4-7575-000		1	SHEET	
58	FF5-8091-000		1	FLAPPER, PRE-REVERSE	
58A	FB4-7665-000		2	DAMPER, FLAPPER	
59	FF5-8092-000		1	GUIDE, PICK-UP	
59A	FB4-7573-000		1	SHEET, SEPARATION	
60	FF5-8204-000		1	PLATE, TENSION	
61	FF5-8205-000		1	SUPPORT PLATE, GEAR, FRONT	
62	FS1-1376-000		1	BUSHING	
63	FS1-1528-000		2	BUSHING	
64	FS1-9010-000		3	SCREW, STEPPED, M3X2.2	
65	FS2-9394-000		2	SCREW, STEPPED, M3X1.4	
66	FS5-3731-000		2	PULLEY, 28T	
67	FS7-0312-000		2	GEAR, 25T/PULLEY, 28T	
68	FS7-0313-000		1	GEAR, 22T/PULLEY, 27T	
69	FS7-0314-000		2	GEAR, 24T	
70	FS7-0315-000		2	GEAR, 24T	
71	FS7-2028-000		2	SPRING, TENSION	
72	FS7-2029-000		2	SPRING, TENSION	
73	FS7-2033-000		1	SPRING, TENSION	
74	FS7-2036-000		1	SPRING, TENSION	
75	FS7-2038-000		1	SPRING, TENSION	
76	FS7-2039-000		1	SPRING, COMPRESSION	
77	WG8-5362-000		4	IC, TLP1241, PHOTO-INTERRUPTER	PI3-6 J123,124,142,143
78	WT2-5041-000		2	TIE, CABLE	
79	XD9-0151-000		1	WASHER	
80	XF9-0682-000		1	BELT, TIMING, 95T	
81	XF9-0683-000		1	BELT, TIMING, 130T	
82	FS7-2031-000		2	SPRING, TENSION	
83	XG9-0237-000		12	BEARING, BALL	
84	VS1-5057-002		2	CONNECTOR, SNAP TIGHT	J101,102

FIGURE & KEY NO.	PART NUMBER	R A N K	Q T Y	DESCRIPTION	SERIAL NUMBER / REMARKS
P30 - 85	VS1-5057-005		1	CONNECTOR, SNAP TIGHT	J144
86	FG2-9382-000		1	REGISTRATION SENSOR SUB CABLE	J132,133,136
86A	VS1-5057-008		1	CONNECTOR, SNAP TIGHT	J132
87	FG2-9383-000		1	DOCUMENT SENSOR CABLE	J140,145
87A	VS1-5057-003		1	CONNECTOR, SNAP TIGHT	J140
88	FG2-9385-000		1	REVERSE SENSOR CABLE	J144,149
89	FG6-2744-000		1	PRE-REGISTRATION GUIDE ASS'Y	
90	FB4-7617-000		1	FLAPPER, REVERSE	
91	FB4-7618-000		1	PLATE, SUPPORT	
92	FF5-8096-000		1	GUIDE, REGISTRATION	
92A	FB4-8054-000		1	SHEET, JAM, 1	
93	FF5-8103-000		1	GUIDE, PRE-REGISTRATION	
93A	FB4-7666-000		1	SHEET	
93B	FB4-7667-000		1	SHEET	
94	FS7-2043-000		1	SPRING, COMPRESSION	
95	FG6-2745-000		1	LOWER GUIDE ASSEMBLY	
96	FB4-7626-000		2	SPRING, LEAF	
97	FB4-7628-000		1	LINK, B	
98	FF5-8098-000		1	FLAPPER, REVERSE	
99	FB4-7653-000		1	PRISM, B	
100	FF5-8104-000		1	COVER, LOWER GUIDE	
100A	FB4-8055-000		1	SHEET, JAM, 2	
101	FG2-9363-000		1	REGISTRATION SENSOR PCB ASS'Y	
102	XF9-0699-000		1	BELT, TIMING, 74T	
103	FS1-9009-000		4	SCREW, STEPPED, M3	
104	FS7-2030-000		1	SPRING, TENSION	
105	FB4-7611-000		1	MOUNT, MOTOR	
106	FB4-7612-000		1	PLATE, TENSION	
107	FB4-7614-000		1	MOUNT, SENSOR	
108	FC2-1479-000		1	DAMPER	

FIGURE & KEY NO.	PART NUMBER	R A N K	Q T Y	DESCRIPTION	SERIAL NUMBER / REMARKS
P30 - 109	FS7-2032-000		2	SPRING, TENSION	
110	FC2-1473-000		1	PULLEY	
111	FF5-8095-000		1	MOUNT, PICK-UP MOTOR	
112	FF5-8203-000		1	PLATE, TENSION	
113	FS7-0317-000		1	GEAR, 16T/PULLEY, 54T	
114	FS7-2034-000		1	SPRING, TENSION	
115	FF5-8097-000		1	MOUNT, SOLENOID	
116	FS7-2035-000		1	SPRING, TENSION	
117	FB4-7655-000		1	LINK, SOLENOID, A	
118	FB4-7657-000		1	LINK, SOLENOID, B	
119	FB4-8034-000		1	SPRING, TORSION	
120	FF5-8102-000		1	MOUNT, SOLENOID	
121	FS7-2037-000		1	SPRING, TENSION	
122	FF5-8093-000		1	HOLDER, SENSOR	
122 A	FB4-7597-000		1	SHEET, DUST-PROOF, A	
122 B	FB4-7598-000		1	SHEET, B	
123	VS1-5057-006		1	CONNECTOR, SNAP TIGHT	J133
124	FG2-9361-000		1	PHOTOTRANSISTER PCB ASSEMBLY	
125	FG2-9381-000		1	REGISTRATION SENSOR CABLE	J133,135
126	FG6-2755-000		1	REVERSE SENSOR ASSEMBLY	
127	FF5-8094-000		1	COVER, SENSOR	
127 A	FB4-7598-000		1	SHEET, B	
128	FB4-7583-000		1	MOUNT, DOCUMENT SENSOR	
129	FB4-7582-000		1	CAP, DOCUMENT SENSOR	
130	FC2-1291-000		1	PULLEY	
131	FF5-8130-000		1	PLATE, TENSION	
132	FH7-5877-000		1	CLUTCH, ELECTROMAGNETIC	CL J102
133	FH6-1632-000		1	MOTOR, STEPPING, DC3.2V	M1 J602
134	FH6-1636-000		1	MOTOR, STEPPING, DC3.2V	M3 J111
135	FH7-5873-000		1	SOLENOID, DC24V	SL1 J91

FIGURE & KEY NO.	PART NUMBER	R A N K	Q T Y	DESCRIPTION	SERIAL NUMBER / REMARKS
P30 - 136	FH7-5875-000		1	SOLENOID, DC24V	SL3 J101
137	XA9-1013-000		2	SCREW, M3X8	
138	XF9-0354-000		1	BELT, TIMING, 76T	
139	XA9-0894-000		AR	SCREW,M3X6	
140	XA9-1035-000		AR	SCREW,M4X4	
141	XD9-0152-000		4	WASHER, SHIM	J91 SEE NOTE J111 SEE NOTE
142	FG2-9365-000		1	REVERSE SENSOR PCB ASSEMBLY	
143	FG2-9362-000		1	LED PCB ASSEMBLY	
144	VS1-5057-002		1	CONNECTOR, SNAP TIGHT	
145	VS1-5057-006		1	CONNECTOR, SNAP TIGHT	
146	FB4-8064-000		1	BUSHING	
501	XB4-7300-609		7	SCREW,TAPPING,TRUSS HEAD,M3X6	
502	XD2-1100-402		5	RING,E	
503	XB6-7300-409		5	SCREW,TP,M3X4	
504	XB1-2300-606		1	SCREW,MACH.,TRUSS HEAD,M3X6	
505	XD2-1100-322		AR	RING,E	
506	XB1-2400-809		2	SCREW,MACH.,TRUSS HEAD,M4X8	
507	XB1-2400-609		AR	SCREW,MACH.,TRUSS HEAD,M4X6	
508	XB1-2300-609		AR	SCREW,MACH.,TRUSS HEAD,M3X6	
509	XD3-1300-162		1	PIN,SPRING	
510	XB6-7260-409		2	SCREW,TP,M2.6X4	
511	XD3-1300-102		1	PIN,SPRING	
512	XB6-7300-609		1	SCREW,TP,M3X6	
513	XD2-1100-502		AR	RING,E	
514	XB1-2400-409		2	SCREW,MACH.,TRUSS HEAD,M4X4	
515	XD3-2200-122		3	PIN,DOWEL	
516	XD2-1200-502		1	RING,E	
517	XD2-1100-642		AR	RING,E	
518	XD3-2200-142		2	PIN,DOWEL	
519	XD2-2100-402		2	RING,GRIP	

FIGURE P31 SEPARATION ASSEMBLY

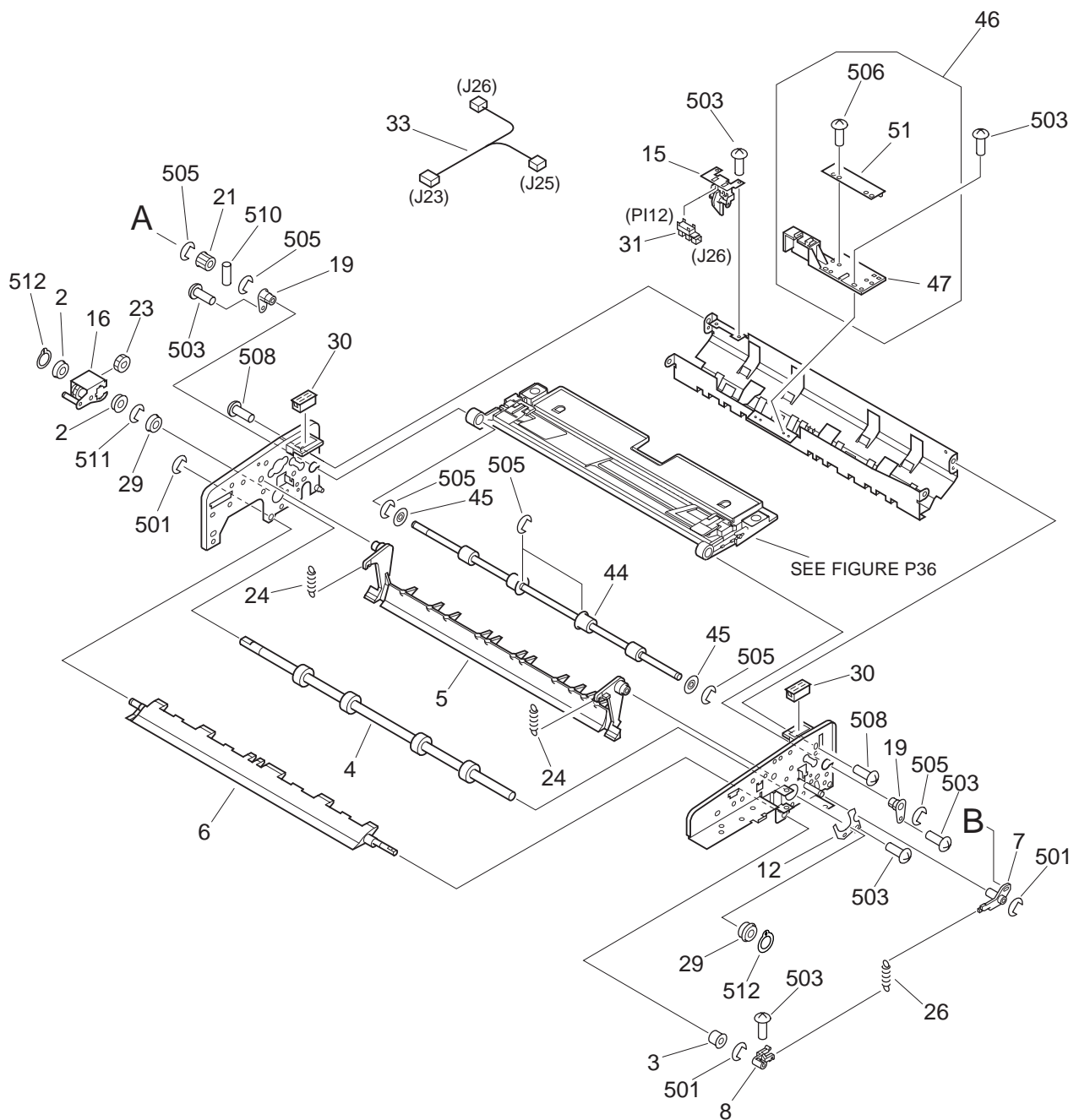


NOTE : This assembly is included in the assembly shown in Figure P30.

FIGURE & KEY NO.	PART NUMBER	R A N K	Q T Y	DESCRIPTION	SERIAL NUMBER / REMARKS
P31 -	FG6-2746-000		1	SEPARATION ASSEMBLY	SEE NOTE
1	FA4-1159-000		4	RING, RETAINING	
2	FB4-7634-000		1	SHAFT	
3	FB4-7640-000		2	ROLLER, PICK-UP	
4	FB4-7641-000		2	ARM, PICK-UP, FRONT	
5	FB4-7642-000		2	ARM, PICK-UP, REAR	
6	FB4-7643-000		1	SHAFT, PICK-UP, FRONT	
7	FB4-7644-000		1	SHAFT, PICK-UP, REAR	
8	FB4-7645-000		1	PLATE, SUPPORT	
9	FB4-7668-000		1	GEAR, 54T	
10	FF5-8100-000		1	GUIDE, SEPARATION	
10A	FB4-7652-000		2	PRISM, A	
11	FS1-1189-000		2	BUSHING	
12	FS1-1508-000		1	BUSHING	
13	FS7-0318-000		1	GEAR, 20T	
14	FS7-0322-000		1	GEAR, 20T	
15	WG8-5362-000		3	IC, TLP1241, PHOTO-INTERRUPTER	PI7-19 J146-148
16	XF9-0684-000		2	BELT, TIMING, 92T	
17	FS3-0137-000		1	GEAR, 20T	
18	FG2-9384-000		1	PICK-UP SENSOR CABLE	J141,146-148
18A	VS1-5057-009		1	CONNECTOR, SNAP TIGHT	J141
19	FB4-7637-000		1	ROLLER, SEPARATION	
20	FB4-7638-000		2	PULLEY, SEPARATION	
21	FB4-7639-000		1	SHAFT, SEPARATION	
22	FB4-7646-000		1	HOLDER, SEPARATION, FRONT	
23	FB4-7647-000		1	HOLDER, SEPARATION, REAR	
24	FB4-7648-000		2	SPRING, LEAF	
25	FB4-7650-000		1	LEVER	
26	FB4-7651-000		1	CAP	
27	FC2-1227-000		1	STOP, SHAFT	

FIGURE & KEY NO.	PART NUMBER	R A N K	Q T Y	DESCRIPTION	SERIAL NUMBER / REMARKS
P31 - 28	FC2-1258-000		2	CLAMP, PITCH, SEPARATION	
29	FC2-1369-000		1	PULLEY, SEPARATION	
30	FC2-1370-000		1	RING, PITCH, FRONT	
31	FC2-1371-000		1	RING, PITCH, REAR	
32	FE6-3059-000		11	BELT, SEPARATION	
33	XA9-1028-000		2	SCREW, ALLEN HEAD, M3X10	
34	XG9-0211-000		2	BALL BEARING, MF128ZZ1MC3D4M	
35	FG6-2748-000		1	FEED ROLLER ASSEMBLY	
35A	FB4-6991-000		12	ROLLER	
36	FG2-9364-000		1	SEPARATION SENSOR PCB ASS'Y	
37	FG6-2749-000		1	SEPARATION SENSOR ASSEMBLY	
38	FF5-8099-000		1	HOLDER, SENSOR	
38A	FB4-7597-000		2	SHEET, DUST-PROOF, A	
39	FG2-9380-000		1	SEPARATION SENSOR CABLE	J131, 134
39A	VS1-5057-006		1	CONNECTOR, SNAP TIGHT	J131
40	XA9-0894-000		3	SCREW, M3X6	
501	XD3-2200-102		1	PIN, DOWEL	
502	XB6-7300-409		2	SCREW, TP, M3X4	
503	XB1-2300-409		9	SCREW, MACH., TRUSS HEAD, M3X4	
504	XB1-1300-609		1	SCREW, MACH., PAN HEAD, M3X6	
505	XD2-1100-642		2	RING, E	
506	XD2-1100-802		6	RING, E	
507	XD2-1100-502		5	RING, E	
508	XB4-7300-609		2	SCREW, TAPPING, TRUSS HEAD, M3X6	
509	XD2-1100-322		2	RING, E	
510	XD2-2100-802		1	RING, GRIP	

FIGURE P35 PAPER DELIVERY ASSEMBLY (1/2)



NOTE : This assembly includes the assemblies shown in Figure P36 and P37.

FIGURE P35 PAPER DELIVERY ASSEMBLY (2/2)

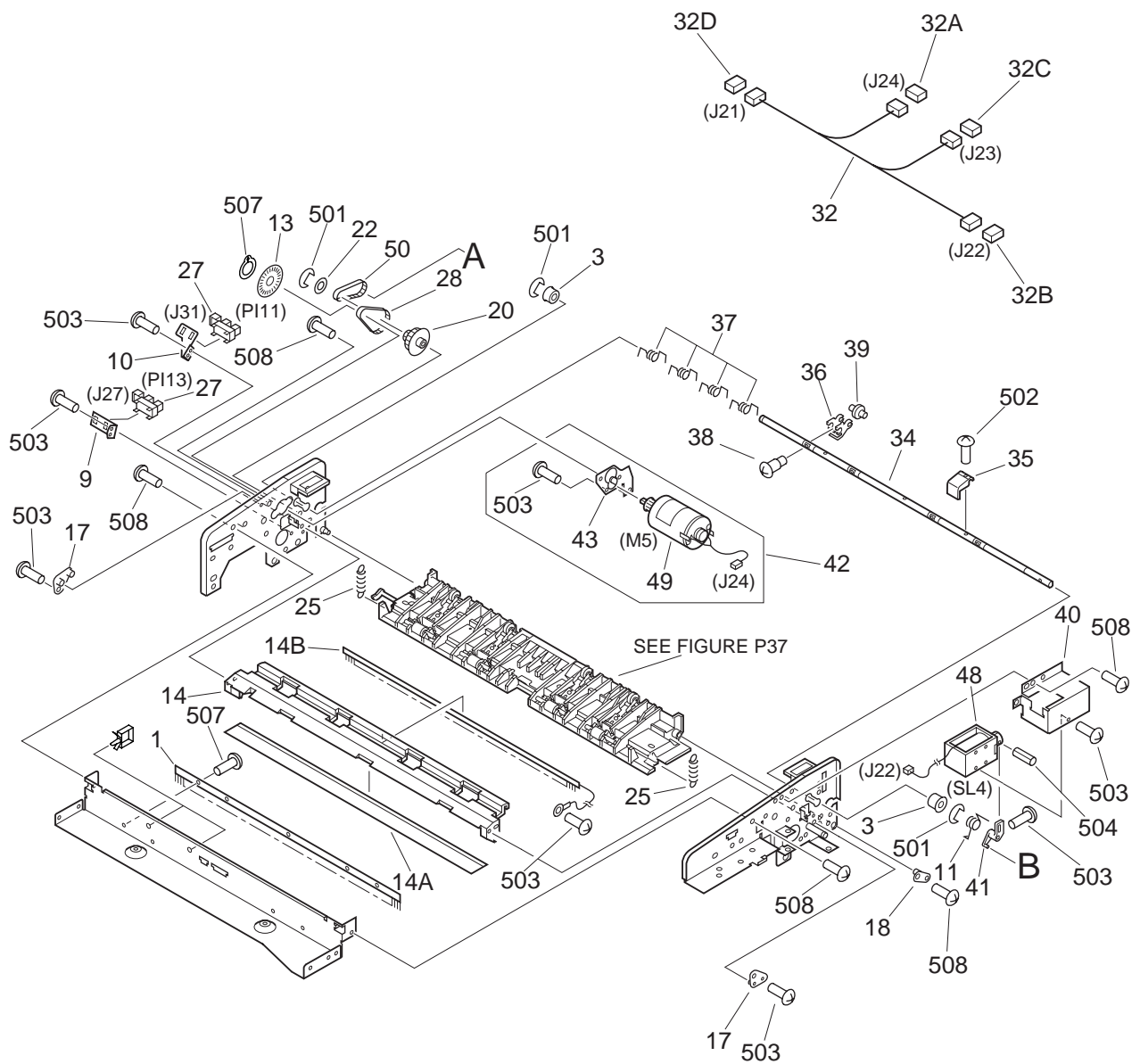
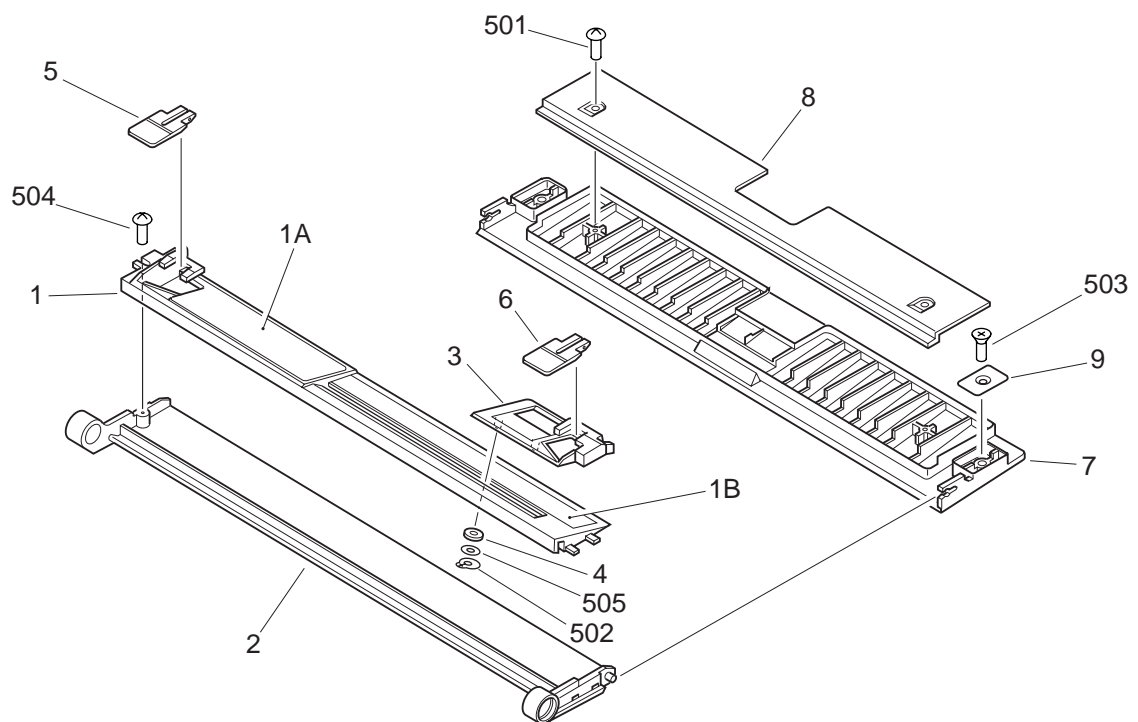


FIGURE & KEY NO.	PART NUMBER	R A N K	Q T Y	DESCRIPTION	SERIAL NUMBER / REMARKS
P35 - 1	FG6-2735-000		1	PAPER DELIVERY ASSEMBLY	AB SIZE SEE NOTE
	FG6-2736-000		1	PAPER DELIVERY ASSEMBLY	A/INCH SIZE SEE NOTE
	FG6-2737-000		1	PAPER DELIVERY ASSEMBLY	A SIZE SEE NOTE
	FG6-2738-000		1	PAPER DELIVERY ASSEMBLY	AB/INCH SIZE SEE NOTE
	FA3-3129-030		1	ELIMINATOR, STATIC CHARGE	
2	FA9-2112-000		2	BUSHING	
3	FB4-7596-000		3	BUSHING	
4	FB4-7675-000		1	ROLLER, MANUAL REGISTRATION	
5	FB4-7678-000		1	GUIDE, SWING	
6	FB4-7682-000		1	FLAPPER DELIVERY	
7	FB4-7693-000		1	LINK, SOLENOID, B	
8	FB4-7694-000		1	LINK, SOLENOID, C	
9	FB4-7698-000		1	MOUNT, SENSOR	
10	FB4-7701-000		1	MOUNT, SENSOR	
11	FB4-7707-000		1	SPRING, TORSION	
12	FB4-7708-000		1	PLATE, ADJUSTING	
13	FC2-1475-000		1	DISK, CLOCK	
14	FF5-8112-000		1	GUIDE, DELIVERY, CENTER	
14A	FB4-7680-000		1	SHEET	
14B	FB4-7681-000		1	ELIMINATOR, STATIC CHARGE	
15	FF5-8115-000		1	SENSOR, MANUAL SET	
16	FF5-8116-000		1	PLATE, LINK, A	
17	FF5-8117-000		2	SUPPORT, GUIDE, CENTER	
18	FF5-8118-000		1	SUPPORT, GUIDE, LOWER	
19	FS2-1610-000		2	SUPPORT, SHAFT	
20	FS5-3734-000		1	PULLEY, 36T/15T	
21	FS5-3735-000		1	PULLEY, 20T	
22	FS5-6323-000		1	FLANGE	
23	FS7-0321-000		1	GEAR, 14T	
24	FS7-2049-000		2	SPRING, TENSION	

FIGURE & KEY NO.	PART NUMBER	R A N K	Q T Y	DESCRIPTION	SERIAL NUMBER / REMARKS
P35 - 25	FS7-2050-000		2	SPRING, TENSION	PI11,13 J31,27
26	FS7-2051-000		1	SPRING, TENSION	
27	WG8-5362-000		2	IC, TLP1241, PHOTO-INTERRUPTER	
28	XF9-0358-000		1	BELT, TIMING, 56T	
29	XG9-0237-000		2	BEARING, BALL	
30	XZ9-0487-000		2	CATCH, MAGNET	PI12 J26 J21-24 J24 J22
31	WG8-5421-000		1	PHOTO-INTERRUPTER	
32	FG2-9372-000		1	DELIVERY SUB CABLE	
32A	VS1-5057-002		1	CONNECTOR, SNAP TIGHT	
32B	VS1-5057-003		1	CONNECTOR, SNAP TIGHT	
32C	VS1-5057-007		1	CONNECTOR, SNAP TIGHT	J23
32D	VS1-5057-012		1	CONNECTOR, SNAP TIGHT	J21
33	FG2-9373-000		1	DELIVERY SENSOR CABLE	J23,25,26
34	FB4-7683-000		1	SHAFT, STOPPER	
35	FB4-7684-000		3	STOPPER, MANUAL	
36	FB4-7685-000		4	HOLDER, ROLLER	
37	FB4-7706-000		4	SPRING, TORSION	
38	RS1-9025-000		4	SCREW, STEPPED, M3	
39	FS5-6649-000		4	ROLLER	
40	FB4-7691-000		1	MOUNT, SOLENOID	
41	FB4-7692-000		1	LINK, SOLENOID, A	
42	FG6-2779-000		1	DELIVERY MOTOR ASSEMBLY	
43	FF5-8119-000		1	MOUNT, MOTOR	
44	FB4-7676-000		1	ROLLER, DELIVERY	
45	FS5-6650-000		2	FLANGE	
46	FG6-2785-000		1	MANUAL REGISTRATION PCB ASS'Y	SL4 J22 M5 J24
47	FB4-7697-000		1	COVER, SENSOR	
48	FH7-5876-000		1	SOLENOID, DC24V	
49	FH6-1638-000		1	MOTOR, DC24V	
50	XF9-0359-000		1	BELT, TIMING, 44T	

FIGURE & KEY NO.	PART NUMBER	R A N K	Q T Y	DESCRIPTION	SERIAL NUMBER / REMARKS
P35 - 51	FG2-9366-000		1	MANUAL REGISTRATION PCB ASS'Y	
501	XD2-1100-402		AR	RING,E	
502	XB1-2300-609		3	SCREW,MACH.,TRUSS HEAD,M3X6	
503	XB1-2300-409		AR	SCREW,MACH.,TRUSS HEAD,M3X4	
504	XD3-1300-122		1	PIN,SPRING	
505	XD2-1100-502		7	RING,E	
506	XB4-7300-609		4	SCREW,TAPPING,TRUSS HEAD,M3X6	
507	XD2-2100-402		1	RING,GRIP	
508	XB1-2400-609		AR	SCREW,MACH.,TRUSS HEAD,M4X6	
510	XD3-2200-082		1	PIN,DOWEL	
511	XD2-1100-642		1	RING,E	
512	XD2-2100-802		2	RING,GRIP	

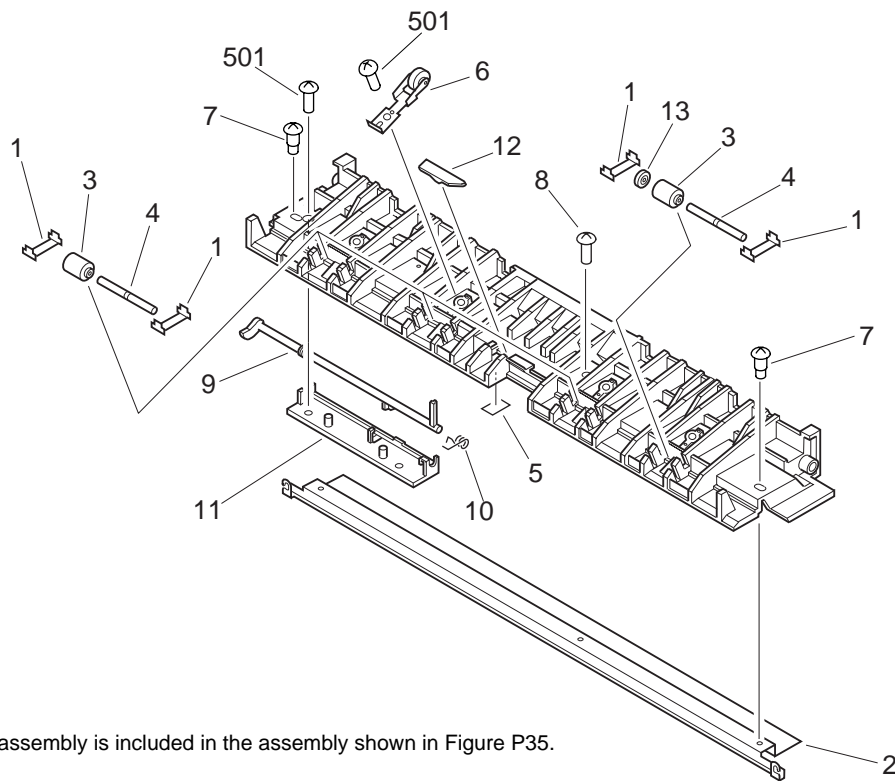
FIGURE P36 MANUAL TRAY ASSEMBLY



NOTE : This assembly is included in the assembly shown in Figure P35.

FIGURE & KEY NO.	PART NUMBER	R A N K	Q T Y	DESCRIPTION	SERIAL NUMBER / REMARKS
P36 - 1	FG6-2773-000		1	MANUAL TRAY ASSEMBLY	AB SIZE SEE NOTE
	FG6-2774-000		1	MANUAL TRAY ASSEMBLY	A/INCH SIZE SEE NOTE
	FG6-2775-000		1	MANUAL TRAY ASSEMBLY	A SIZE SEE NOTE
	FG6-2776-000		1	MANUAL TRAY ASSEMBLY	AB/INCH SIZE SEE NOTE
	FF5-8124-000		1	TRAY, MANUAL, 2	AB SIZE
1 A	FF5-8125-000		1	TRAY, MANUAL, 2	A/INCH SIZE
	FF5-8126-000		1	TRAY, MANUAL, 2	A SIZE
	FF5-8127-000		1	TRAY, MANUAL, 2	AB/INCH SIZE
	FB4-8046-000		1	LABEL, SET	AB SIZE
	FB4-8047-000		1	LABEL, MANUAL FEED	EXCEPT AB SIZE
1 B 2	FB4-8048-000		1	LABEL, SIZE	AB SIZE
	FB4-8049-000		1	LABEL, SIZE	A/INCH SIZE
	FB4-8050-000		1	LABEL, SIZE	A SIZE
	FB4-8051-000		1	LABEL, SIZE	AB/INCH SIZE
	FB4-7724-000		1	TRAY, MANUAL, 1	
3	FB4-7726-000		1	GUIDE, SLIDE	
4	FB4-7727-000		2	PAD	
5	FB4-7728-000		1	GUIDE, MANUAL, A	
6	FB4-7729-000		1	GUIDE, MANUAL, M	
7	FB4-7730-000		1	TRAY, MANUAL, 3	
8	FB4-7731-000		1	TRAY, MANUAL, 4	
9	FB4-7732-000		2	PLATE, MAGNET	
501	XB4-7300-606		2	SCREW,TAPPING,TRUSS HEAD,M3X6	
502	XD2-2100-302		2	RING,GRIP	
503	XB1-3300-607		2	SCREW,MACH.,C.S.HEAD,M3X6	
504	XB4-7300-806		1	SCREW,TAPPING,TRUSS HEAD,M3X8	
505	XD1-1104-135		2	SHIM	

FIGURE P37 DELIVERY LOWER GUIDE ASSEMBLY



NOTE : This assembly is included in the assembly shown in Figure P35.

FIGURE & KEY NO.	PART NUMBER	R A N K	Q T Y	DESCRIPTION	SERIAL NUMBER / REMARKS
P37 -	FG6-2772-000		1	DELIVERY LOWER GUIDE ASSEMBLY	SEE NOTE
1	FB4-7687-000		8	SPRING, LEAF	
2	FB4-7690-000		1	PLATE	
3	FC2-1302-000		4	ROLLER	
4	FC2-1303-000		4	SHAFT, ROLLER	
5	FB4-8055-000		1	SHEET, JAM, 2	
6	FF5-8114-000		4	ROLLER	
7	FS2-9475-000		2	SCREW, STEPPED, M3X3.2	
8	FS5-9439-000		1	SCREW, MACH., TRUSS HEAD, M3X4	
9	FB4-7689-000		1	FLAG, DELIVERY SENSOR	
10	FB4-7733-000		1	SPRING, TORSION	
11	FB4-7734-000		1	HOLDER, DELIVERY SENSOR	
12	FN5-4070-000		1	PRISM	
13	FS5-6651-000		1	ROLLER	
501	XB4-7300-809		6	SCREW, TAPPING, TRUSS HEAD, M3X8	

FIGURE P90

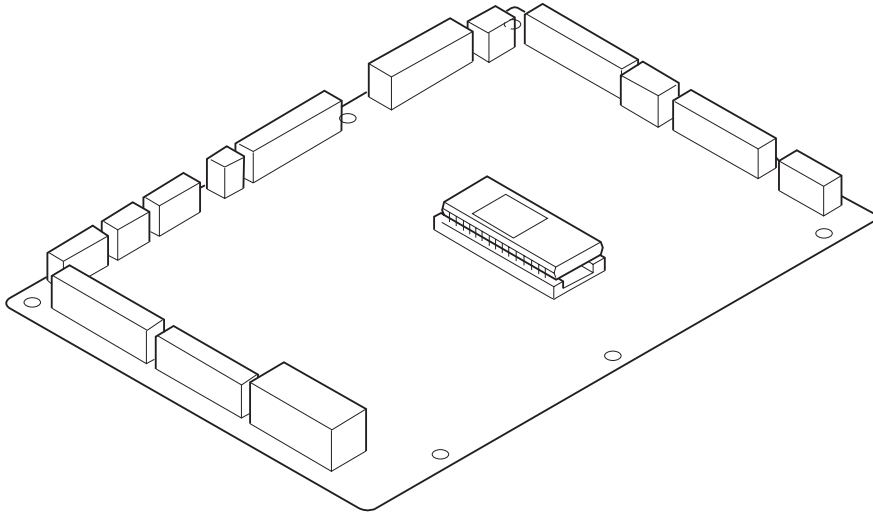


FIGURE & KEY NO.	PART NUMBER	R A N K	Q T Y	DESCRIPTION	SERIAL NUMBER / REMARKS
P90 -	FG2-9358-000		1	ADF CONTROLLER PCB ASSEMBLY	
Q002	FH4-5560-000		1	IC, M38881M2-010GP, IPC	
Q003	FF3-3356-000		1	IC, CY27C010-70WC, CMOS	

FIGURE P91 PICK-UP TRAY PCB ASSEMBLY

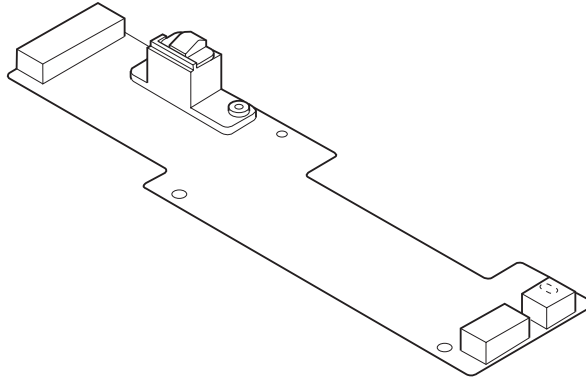


FIGURE & KEY NO.	PART NUMBER	R A N K	Q T Y	DESCRIPTION	SERIAL NUMBER / REMARKS
P91 -	FG6-2783-000		1	PICK-UP TRAY PCB ASSEMBLY	
LED301	WG1-5373-000		1	LED, TLN119B	

FIGURE PB LIST OF CONNECTORS

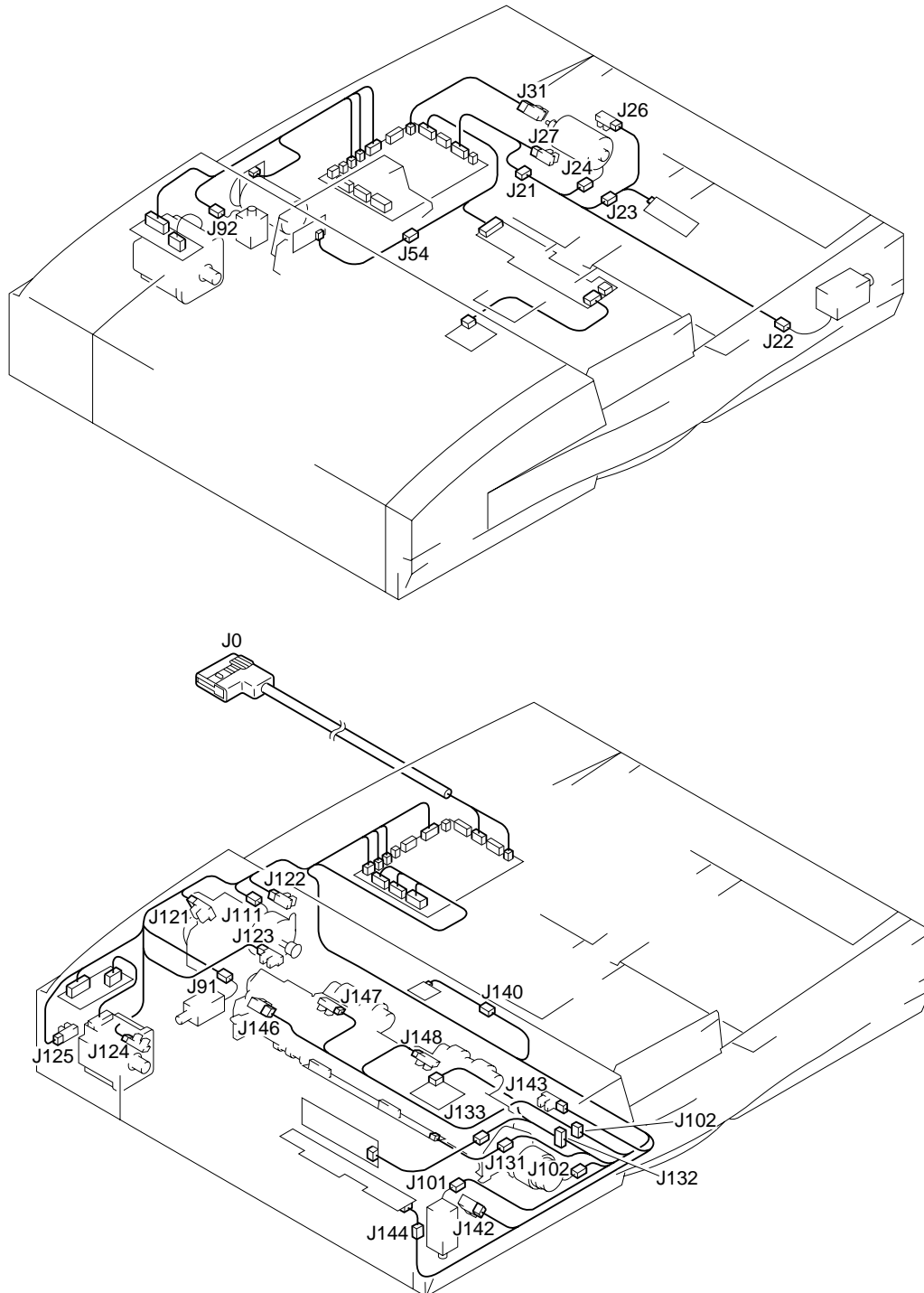


FIGURE & KEY NO.	PART NUMBER	R A N K	Q T Y	DESCRIPTION	SERIAL NUMBER / REMARKS
P B -	NPN		RF	LIST OF CONNECTORS	
J0	FH2-6481-000		1	HOUSING	
	VS3-5080-007		1	CONNECTOR, 7P, FEMALE	
	WS3-5044-000		3	SOCKET, CONTACT, 18-24AWG	
	WT1-5155-000		7	TERMINAL	
J1	PCB			ADF CONTROLLER PCB ASSEMBLY	
	VS1-5824-007		1	CONNECTOR, 7P, FEMALE	
	WS3-5358-000		7	SOCKET CONTACT, 22-26AWG	
J2	PCB			ADF CONTROLLER PCB ASSEMBLY	
	VS1-0842-015		1	CONNECTOR, 15P, FEMALE	
J3	PCB			ADF CONTROLLER PCB ASSEMBLY	
	VS1-0842-003		1	CONNECTOR, 3P, FEMALE	
J4	PCB			ADF CONTROLLER PCB ASSEMBLY	
	VS3-5083-003		1	CONNECTOR, 3P, FEMALE	
	WS3-5160-000		2	SOCKET CONTACT, 18-24AWG	
J5	PCB			ADF CONTROLLER PCB ASSEMBLY	
	VS1-0842-013		1	CONNECTOR, 13P, FEMALE	
J6	PCB			ADF CONTROLLER PCB ASSEMBLY	
	VS1-0842-013		1	CONNECTOR, 13P, FEMALE	
J7	PCB			ADF CONTROLLER PCB ASSEMBLY	
J8	VS1-0842-014		1	CONNECTOR, 14P, FEMALE	
	PCB			ADF CONTROLLER PCB ASSEMBLY	
	VS1-0279-002		1	CONNECTOR, 2P, FEMALE	
	WT1-0240-000		2	SOCKET CONTACT, 20-26AWG	
J9	PCB			ADF CONTROLLER PCB ASSEMBLY	
J 10	VS1-0842-005		1	CONNECTOR, 5P, FEMALE	
	PCB			ADF CONTROLLER PCB ASSEMBLY	
	VS1-0842-004		1	CONNECTOR, 4P, FEMALE	
J 11	PCB			ADF CONTROLLER PCB ASSEMBLY	
	VS1-0842-006		1	CONNECTOR, 6P, FEMALE	

FIGURE & KEY NO.	PART NUMBER	R A N K	Q T Y	DESCRIPTION	SERIAL NUMBER / REMARKS
P B - J 12	PCB			ADF CONTROLLER PCB ASSEMBLY	
	VS1-0842-015		1	CONNECTOR, 15P, FEMALE	
J 13	PCB			ADF CONTROLLER PCB ASSEMBLY	
	VS1-0842-014		1	CONNECTOR, 14P, FEMALE	
J 14	PCB			ADF CONTROLLER PCB ASSEMBLY	
<hr/>					
	VS1-0842-011		1	CONNECTOR, 11P, FEMALE	
	VS1-0852-011		1	CONNECTOR, 11P, FEMALE	
	VS9-5009-022		1	HOLDER, CONNECTOR, 22P	
J 21	VS1-0842-012		2	CONNECTOR, 12P, FEMALE	
	VS1-5057-012		1	CONNECTOR, SNAP TIGHT	
<hr/>					
J 22	NPN			DELIVERY SOLENOID	SL4
	VS1-0842-003		1	CONNECTOR, 3P, FEMALE	
	VS1-5057-003		1	CONNECTOR, SNAP TIGHT	
J 23	VS1-0842-007		2	CONNECTOR, 7P, FEMALE	
	VS1-5057-007		1	CONNECTOR, SNAP TIGHT	
<hr/>					
J 24	NPN			DELIVERY MOTOR	M5
	VS1-0842-002		1	CONNECTOR, 2P, FEMALE	
	VS1-5057-002		1	CONNECTOR, SNAP TIGHT	
J 25	PCB			MANUAL REGISTRATION PCB ASS'Y	S9
	VS1-0842-004		1	CONNECTOR, 4P, FEMALE	
<hr/>					
J 26	NPN			MANUAL SET SENSOR	PI12
	VS1-0842-003		1	CONNECTOR, 3P, FEMALE	
J 27	NPN			DOCUMENT DELIVERY SENSOR	PI13
	VS1-0842-003		1	CONNECTOR, 3P, FEMALE	
J 31	NPN			DELIVERY MOTOR CLOCK SENSOR	PI11
<hr/>					
	VS1-0842-003		1	CONNECTOR, 3P, FEMALE	
J 51	PCB			DOCUMENT TRAY PCB ASSEMBLY	S7
	VS1-0842-015		1	CONNECTOR, 15P, FEMALE	
J 52	PCB			DOCUMENT TRAY PCB ASSEMBLY	S7
	VS1-0842-003		1	CONNECTOR, 3P, FEMALE	

FIGURE & KEY NO.	PART NUMBER	R A N K	Q T Y	DESCRIPTION	SERIAL NUMBER / REMARKS
P B - J 54	VS1-0842-002		2	CONNECTOR, 2P, FEMALE	
	VS1-5057-002		1	CONNECTOR, SNAP TIGHT	
J 55	PCB			INDICATOR PCB ASSEMBLY	
	VS1-0842-002		1	CONNECTOR, 2P, FEMALE	
J 56	PCB			LAST PAPER SENSOR PCB ASSEMBLY	S8
<hr/>					
	VS1-0842-003		1	CONNECTOR, 3P, FEMALE	
J 71	PCB			BELT MOTOR DRIVER PCB ASS'Y	
	VS1-0842-014		1	CONNECTOR, 14P, FEMALE	
J 72	NPN			BELT MOTOR	M2
	PCB			BELT MOTOR DRIVER PCB ASS'Y	
<hr/>					
J 81	NPN			SEPARATION MOTOR	M4
	VS1-0279-002		1	CONNECTOR, 2P, FEMALE	
	WT1-0240-000		2	SOCKET CONTACT, 20-26AWG	
J 91	NPN			REVERSE SOLENOID	SL1
	VS1-0842-002		1	CONNECTOR, 2P, FEMALE	
<hr/>					
	VS1-5057-002		1	CONNECTOR, SNAP TIGHT	
J 92	NPN			STOP PLATE SOLENOID	SL2
	VS1-0842-003		1	CONNECTOR, 3P, FEMALE	
	VS1-5057-003		1	CONNECTOR, SNAP TIGHT	
J101	NPN			PRE-REVERSE SOLENOID	SL3
<hr/>					
	VS1-0842-002		1	CONNECTOR, 2P, FEMALE	
	VS1-5057-002		1	CONNECTOR, SNAP TIGHT	
J102	NPN			CLUTCH	CL
	VS1-0842-002		1	CONNECTOR, 2P, FEMALE	
	VS1-5057-002		1	CONNECTOR, SNAP TIGHT	
<hr/>					
J111	NPN			PICK-UP MOTOR	M3
	VS1-0842-006		1	CONNECTOR, 6P, FEMALE	
	VS1-5057-006		1	CONNECTOR, SNAP TIGHT	
J121	NPN			BELT MOTOR CLOCK SENSOR	PI1
	VS1-0852-003		1	CONNECTOR, 3P, FEMALE	

FIGURE & KEY NO.	PART NUMBER	R A N K	Q T Y	DESCRIPTION	SERIAL NUMBER / REMARKS
P B - J122	NPN			SEPARATION MOTOR CLOCK SENSOR	PI2
	VS1-0842-003		1	CONNECTOR, 3P, FEMALE	
J123	NPN			LEFT COVER SENSOR, REAR	PI3
	VS1-0842-003		1	CONNECTOR, 3P, FEMALE	
J124	NPN			PRE-REVERSE PAPER SENSOR	PI4
<hr/>					
	VS1-0842-003		1	CONNECTOR, 3P, FEMALE	
J125	NPN			ADF OPEN/CLOSE SENSOR	PI10
	VS1-0852-003		1	CONNECTOR, 3P, FEMALE	
J131	VS1-0842-006		2	CONNECTOR, 6P, FEMALE	
	VS1-5057-006		1	CONNECTOR, SNAP TIGHT	
<hr/>					
J132	VS1-0842-008		2	CONNECTOR, 8P, FEMALE	
	VS1-5057-008		1	CONNECTOR, SNAP TIGHT	
J133	VS1-0842-006		2	CONNECTOR, 6P, FEMALE	
	VS1-5057-006		1	CONNECTOR, SNAP TIGHT	
J134	PCB			SEPARATION SENSOR PCB ASSEMBLY	S4,5
<hr/>					
	VS1-0842-006		1	CONNECTOR, 6P, FEMALE	
J135	PCB			REGISTRATION SENSOR PCB ASS'Y	S2,3
	VS1-0842-006		1	CONNECTOR, 6P, FEMALE	
J136	PCB			PHOTOTRANSISTER PCB ASSEMBLY	
	VS1-0842-002		1	CONNECTOR, 2P, FEMALE	
<hr/>					
J140	VS1-0842-003		2	CONNECTOR, 3P, FEMALE	
	VS1-5057-003		1	CONNECTOR, SNAP TIGHT	
J141	VS1-0842-009		2	CONNECTOR, 9P, FEMALE	
	VS1-5057-009		1	CONNECTOR, SNAP TIGHT	
J142	NPN			REGISTRATION ROLLER SENSOR	PI5
<hr/>					
	VS1-0842-003		1	CONNECTOR, 3P, FEMALE	
J143	NPN			LEFT COVER SENSOR, FRONT	PI6
	VS1-0842-003		1	CONNECTOR, 3P, FEMALE	
J144	VS1-0842-005		2	CONNECTOR, 5P, FEMALE	
	VS1-5057-005		1	CONNECTOR, SNAP TIGHT	

FIGURE & KEY NO.	PART NUMBER	R A N K	Q T Y	DESCRIPTION	SERIAL NUMBER / REMARKS
P B - J145	PCB			LED PCB ASSEMBLY	
	VS1-0842-002		1	CONNECTOR, 2P, FEMALE	
J146	NPN			PICK-UP ROLLER POSITION SENSOR	PI7
	VS1-0842-003		1	CONNECTOR, 3P, FEMALE	
J147	NPN			PICK-UP ROLLER HEIGHT SENSOR,1	PI8
	VS1-0842-003		1	CONNECTOR, 3P, FEMALE	
J148	NPN			PICK-UP ROLLER HEIGHT SENSOR,2	PI9
	VS1-0842-003		1	CONNECTOR, 3P, FEMALE	
J149	PCB			REVERSE SENSOR PCB ASSEMBLY	S1
	VS1-0842-004		1	CONNECTOR, 4P, FEMALE	
J601	PCB			REVERSE MOTOR DRIVER PCB ASS'Y	
	VS1-0842-013		1	CONNECTOR, 13P, FEMALE	
J602	NPN			REVERSE MOTOR	M1
	PCB			REVERSE MOTOR DRIVER PCB ASS'Y	

PD NUMERICAL INDEX

PART NUMBER	FIGURE & KEY NO.	PART NUMBER	FIGURE & KEY NO.	PART NUMBER	FIGURE & KEY NO.
FA3 - 3129 - 030	P11 - 1	FB4 - 7652 - 000	P30 - 55	FB4 - 7769 - 000	P21 - 1
	P35 - 1		P31 - 10A	FB4 - 7770 - 000	P21 - 2
FA3 - 4725 - 000	P11 - 38	FB4 - 7653 - 000	P30 - 54	FB4 - 7772 - 000	P11 - 73
FA4 - 1159 - 000	P31 - 1		P30 - 99	FB4 - 7782 - 000	P11 - 5
FA5 - 5499 - 000	P11 - 60	FB4 - 7655 - 000	P30 - 117	FB4 - 7783 - 000	P11 - 27
FA9 - 2112 - 000	P35 - 2	FB4 - 7656 - 000	P30 - 36	FB4 - 7786 - 000	P11 - 39
FB3 - 3143 - 020	P10 - 10	FB4 - 7657 - 000	P30 - 118	FB4 - 7787 - 000	P11 - 40
FB4 - 5936 - 000	P13 - 11A	FB4 - 7658 - 000	P30 - 37	FB4 - 7788 - 000	P11 - 45
FB4 - 5939 - 000	P13 - 11A	FB4 - 7660 - 000	P30 - 38	FB4 - 7789 - 000	P11 - 6
FB4 - 6991 - 000	P31 - 35A	FB4 - 7662 - 000	P30 - 39	FB4 - 7791 - 000	P11 - 48
FB4 - 7003 - 000	P11 - 44	FB4 - 7663 - 000	P30 - 40	FB4 - 7792 - 000	P11 - 49
FB4 - 7004 - 000	P11 - 64	FB4 - 7664 - 000	P30 - 41	FB4 - 7793 - 000	P11 - 74
FB4 - 7556 - 000	P30 - 1	FB4 - 7665 - 000	P30 - 58A	FB4 - 7794 - 000	P30 - 47
FB4 - 7557 - 000	P30 - 2	FB4 - 7666 - 000	P30 - 93A	FB4 - 7795 - 000	P30 - 48
FB4 - 7559 - 000	P30 - 3	FB4 - 7667 - 000	P30 - 93B	FB4 - 8027 - 000	P11 - 58
FB4 - 7560 - 000	P30 - 4	FB4 - 7668 - 000	P31 - 9	FB4 - 8028 - 000	P11 - 61
FB4 - 7561 - 000	P30 - 5	FB4 - 7669 - 000	P30 - 42	FB4 - 8030 - 000	P13 - 7
FB4 - 7562 - 000	P30 - 6	FB4 - 7670 - 000	P30 - 43	FB4 - 8031 - 000	P30 - 49
FB4 - 7563 - 000	P30 - 7	FB4 - 7675 - 000	P35 - 4	FB4 - 8032 - 000	P30 - 50
FB4 - 7564 - 000	P30 - 8	FB4 - 7676 - 000	P35 - 44	FB4 - 8033 - 000	P30 - 51
FB4 - 7565 - 000	P30 - 9	FB4 - 7678 - 000	P35 - 5	FB4 - 8034 - 000	P30 - 119
FB4 - 7566 - 000	P30 - 10	FB4 - 7680 - 000	P35 - 14A	FB4 - 8036 - 000	P11 - 7
FB4 - 7567 - 000	P30 - 11	FB4 - 7681 - 000	P35 - 14B	FB4 - 8037 - 000	P11 - 75
FB4 - 7568 - 000	P30 - 12	FB4 - 7682 - 000	P35 - 6	FB4 - 8040 - 000	P12 - 8A
FB4 - 7570 - 000	P30 - 13	FB4 - 7683 - 000	P35 - 34	FB4 - 8041 - 000	P12 - 8A
FB4 - 7571 - 000	P30 - 14	FB4 - 7684 - 000	P35 - 35	FB4 - 8042 - 000	P12 - 8B
FB4 - 7572 - 000	P30 - 15	FB4 - 7685 - 000	P35 - 36	FB4 - 8043 - 000	P12 - 8B
FB4 - 7573 - 000	P30 - 59A	FB4 - 7687 - 000	P37 - 1	FB4 - 8044 - 000	P12 - 8B
FB4 - 7574 - 000	P30 - 56A	FB4 - 7689 - 000	P37 - 9	FB4 - 8045 - 000	P12 - 8B
FB4 - 7575 - 000	P30 - 57A	FB4 - 7690 - 000	P37 - 2	FB4 - 8046 - 000	P36 - 1A
FB4 - 7576 - 000	P30 - 16	FB4 - 7691 - 000	P35 - 40	FB4 - 8047 - 000	P36 - 1A
FB4 - 7577 - 000	P30 - 17	FB4 - 7692 - 000	P35 - 41	FB4 - 8048 - 000	P36 - 1B
FB4 - 7578 - 000	P30 - 18	FB4 - 7693 - 000	P35 - 7	FB4 - 8049 - 000	P36 - 1B
FB4 - 7579 - 000	P30 - 19	FB4 - 7694 - 000	P35 - 8	FB4 - 8050 - 000	P36 - 1B
FB4 - 7582 - 000	P30 - 129	FB4 - 7697 - 000	P35 - 47	FB4 - 8051 - 000	P36 - 1B
FB4 - 7583 - 000	P30 - 128	FB4 - 7698 - 000	P35 - 9	FB4 - 8052 - 000	P10 - 8B
FB4 - 7584 - 000	P30 - 20	FB4 - 7701 - 000	P35 - 10	FB4 - 8053 - 000	P10 - 8A
FB4 - 7585 - 000	P30 - 21	FB4 - 7703 - 000	P11 - 66	FB4 - 8054 - 000	P30 - 92A
FB4 - 7586 - 000	P30 - 22	FB4 - 7706 - 000	P35 - 37	FB4 - 8055 - 000	P30 - 100A
FB4 - 7587 - 000	P30 - 23	FB4 - 7707 - 000	P35 - 11		P37 - 5
FB4 - 7588 - 000	P30 - 24	FB4 - 7708 - 000	P35 - 12	FB4 - 8057 - 000	P13 - 8
FB4 - 7589 - 000	P30 - 25	FB4 - 7710 - 000	P12 - 1	FB4 - 8062 - 000	P12 - 8C
FB4 - 7590 - 000	P30 - 26	FB4 - 7711 - 000	P12 - 2	FB4 - 8064 - 000	P30 - 146
FB4 - 7591 - 000	P30 - 27	FB4 - 7712 - 000	P12 - 3	FB4 - 8065 - 000	P11 - 13
FB4 - 7592 - 000	P30 - 28	FB4 - 7715 - 000	P12 - 15A	FC1 - 3044 - 000	P11 - 8
FB4 - 7593 - 000	P30 - 29	FB4 - 7716 - 000	P12 - 15A	FC1 - 6179 - 000	P12 - 7
FB4 - 7594 - 000	P30 - 30	FB4 - 7718 - 000	P12 - 14	FC1 - 7810 - 000	P30 - 53
FB4 - 7595 - 000	P30 - 31	FB4 - 7719 - 000	P12 - 5	FC2 - 1191 - 000	P11 - 9
FB4 - 7596 - 000	P30 - 32	FB4 - 7723 - 000	P12 - 6	FC2 - 1195 - 000	P11 - 28
	P35 - 3	FB4 - 7724 - 000	P36 - 2	FC2 - 1196 - 000	P11 - 29
FB4 - 7597 - 000	P30 - 122A	FB4 - 7726 - 000	P36 - 3	FC2 - 1197 - 000	P11 - 30
	P31 - 38A	FB4 - 7727 - 000	P36 - 4	FC2 - 1204 - 000	P11 - 10
FB4 - 7598 - 000	P30 - 122B	FB4 - 7728 - 000	P36 - 5	FC2 - 1206 - 000	P11 - 11
	P30 - 127A	FB4 - 7729 - 000	P36 - 6	FC2 - 1208 - 000	P11 - 41
FB4 - 7599 - 000	P30 - 33	FB4 - 7730 - 000	P36 - 7	FC2 - 1209 - 000	P11 - 12
FB4 - 7601 - 000	P13 - 1	FB4 - 7731 - 000	P36 - 8	FC2 - 1227 - 000	P31 - 27
FB4 - 7602 - 000	P13 - 2	FB4 - 7732 - 000	P36 - 9	FC2 - 1258 - 000	P31 - 28
FB4 - 7604 - 000	P13 - 3	FB4 - 7733 - 000	P37 - 10	FC2 - 1291 - 000	P30 - 130
FB4 - 7605 - 000	P13 - 4	FB4 - 7734 - 000	P37 - 11	FC2 - 1302 - 000	P37 - 3
FB4 - 7606 - 000	P13 - 5	FB4 - 7738 - 000	P10 - 11	FC2 - 1303 - 000	P37 - 4
FB4 - 7607 - 000	P13 - 6	FB4 - 7739 - 000	P10 - 12	FC2 - 1351 - 000	P30 - 52
FB4 - 7611 - 000	P30 - 105	FB4 - 7740 - 000	P10 - 13	FC2 - 1369 - 000	P31 - 29
FB4 - 7612 - 000	P30 - 106	FB4 - 7741 - 000	P10 - 1	FC2 - 1370 - 000	P31 - 30
FB4 - 7614 - 000	P30 - 107	FB4 - 7744 - 000	P10 - 2	FC2 - 1371 - 000	P31 - 31
FB4 - 7617 - 000	P30 - 90	FB4 - 7745 - 000	P30 - 44	FC2 - 1473 - 000	P30 - 110
FB4 - 7618 - 000	P30 - 91	FB4 - 7746 - 000	P30 - 45	FC2 - 1475 - 000	P35 - 13
FB4 - 7620 - 000	P30 - 34	FB4 - 7747 - 000	P11 - 67	FC2 - 1479 - 000	P30 - 108
FB4 - 7625 - 000	P30 - 35	FB4 - 7748 - 000	P11 - 68	FC2 - 2146 - 000	P13 - 9
FB4 - 7626 - 000	P30 - 96	FB4 - 7749 - 000	P11 - 69	FC2 - 3139 - 000	P10 - 7A
FB4 - 7628 - 000	P30 - 97	FB4 - 7750 - 000	P11 - 70	FC2 - 3245 - 000	P13 - 10
FB4 - 7634 - 000	P31 - 2	FB4 - 7751 - 000	P10 - 6	FE6 - 3059 - 000	P31 - 32
FB4 - 7637 - 000	P31 - 19	FB4 - 7752 - 000	P10 - 14	FF3 - 3356 - 000	P90 - Q003
FB4 - 7638 - 000	P31 - 20	FB4 - 7753 - 000	P10 - 3	FF5 - 8089 - 000	P30 - 56
FB4 - 7639 - 000	P31 - 21	FB4 - 7754 - 000	P10 - 4	FF5 - 8090 - 000	P30 - 57
FB4 - 7640 - 000	P31 - 3	FB4 - 7755 - 000	P11 - 71	FF5 - 8091 - 000	P30 - 58
FB4 - 7641 - 000	P31 - 4	FB4 - 7756 - 000	P11 - 72	FF5 - 8092 - 000	P30 - 59
FB4 - 7642 - 000	P31 - 5	FB4 - 7757 - 000	P11 - 35	FF5 - 8093 - 000	P30 - 122
FB4 - 7643 - 000	P31 - 6	FB4 - 7759 - 000	P11 - 37	FF5 - 8094 - 000	P30 - 127
FB4 - 7644 - 000	P31 - 7	FB4 - 7761 - 000	P11 - 32	FF5 - 8095 - 000	P30 - 111
FB4 - 7645 - 000	P31 - 8	FB4 - 7762 - 000	P11 - 33	FF5 - 8096 - 000	P30 - 92
FB4 - 7646 - 000	P31 - 22	FB4 - 7763 - 000	P11 - 2	FF5 - 8097 - 000	P30 - 115
FB4 - 7647 - 000	P31 - 23	FB4 - 7765 - 000	P20 - 1	FF5 - 8098 - 000	P30 - 98
FB4 - 7648 - 000	P31 - 24	FB4 - 7766 - 000	P20 - 2	FF5 - 8099 - 000	P31 - 38
FB4 - 7650 - 000	P31 - 25	FB4 - 7767 - 000	P20 - 3	FF5 - 8100 - 000	P31 - 10
FB4 - 7651 - 000	P31 - 26	FB4 - 7768 - 000	P30 - 46	FF5 - 8102 - 000	P30 - 120

PART NUMBER	FIGURE & KEY NO.	PART NUMBER	FIGURE & KEY NO.	PART NUMBER	FIGURE & KEY NO.
FF5 - 8103 - 000	P30 - 93	FG6 - 2798 - 000	P20 -	PCB	P B - J 3
FF5 - 8104 - 000	P30 - 100	FG6 - 2799 - 000	P21 -		P B - J 4
FF5 - 8106 - 000	P12 - 15	FG6 - 2800 - 000	P11 - 46		P B - J 5
FF5 - 8107 - 000	P12 - 15	FG6 - 2801 - 000	P11 - 53		P B - J 6
FF5 - 8108 - 000	P10 - 7	FG6 - 2802 - 000	P11 - 56		P B - J 7
FF5 - 8109 - 000	P10 - 8	FG6 - 2817 - 000	P10 - 5		P B - J 8
FF5 - 8112 - 000	P35 - 14	FH2 - 6481 - 000	P B - J 0		P B - J 9
FF5 - 8114 - 000	P37 - 6	FH4 - 5560 - 000	P90 - Q002		P B - J 10
FF5 - 8115 - 000	P35 - 15	FH6 - 1632 - 000	P30 - 133		P B - J 11
FF5 - 8116 - 000	P35 - 16	FH6 - 1634 - 000	P20 - 7		P B - J 12
FF5 - 8117 - 000	P35 - 17	FH6 - 1636 - 000	P30 - 134		P B - J 13
FF5 - 8118 - 000	P35 - 18	FH6 - 1637 - 000	P21 - 3		P B - J 14
FF5 - 8119 - 000	P35 - 43	FH6 - 1638 - 000	P35 - 49		P B - J 25
FF5 - 8120 - 000	P12 - 8	FH7 - 5873 - 000	P30 - 135		P B - J 51
FF5 - 8121 - 000	P12 - 8	FH7 - 5874 - 000	P21 - 6		P B - J 52
FF5 - 8122 - 000	P12 - 8	FH7 - 5875 - 000	P30 - 136		P B - J 55
FF5 - 8123 - 000	P12 - 8	FH7 - 5876 - 000	P35 - 48		P B - J 56
FF5 - 8124 - 000	P36 - 1	FH7 - 5877 - 000	P30 - 132		P B - J 71
FF5 - 8125 - 000	P36 - 1	FM6 - 2249 - 000	P11 - 3		P B - J 72
FF5 - 8126 - 000	P36 - 1	FN5 - 4070 - 000	P37 - 12		P B - J 134
FF5 - 8127 - 000	P36 - 1	FS1 - 1046 - 000	P11 - 14		P B - J135
FF5 - 8130 - 000	P30 - 131	FS1 - 1189 - 000	P31 - 11		P B - J136
FF5 - 8131 - 000	P11 - 42	FS1 - 1376 - 000	P30 - 62		P B - J145
FF5 - 8132 - 000	P11 - 43	FS1 - 1508 - 000	P31 - 12		P B - J149
FF5 - 8203 - 000	P30 - 112	FS1 - 1510 - 000	P11 - 50		P B - J601
FF5 - 8204 - 000	P30 - 60	FS1 - 1528 - 000	P30 - 63		P B - J602
FF5 - 8205 - 000	P30 - 61	FS1 - 9009 - 000	P30 - 103	RS1 - 9025 - 000	P35 - 38
FF5 - 8206 - 000	P13 - 11	FS1 - 9010 - 000	P30 - 64	VS1 - 0279 - 002	P B - J 8
FF5 - 8207 - 000	P13 - 11	FS1 - 9102 - 000	P11 - 15		P B - J 81
FF5 - 8210 - 000	P11 - 59	FS1 - 9199 - 000	P11 - 16	VS1 - 0842 - 002	P B - J 24
FF5 - 8211 - 000	P11 - 62	FS2 - 1610 - 000	P35 - 19		P B - J 54
FF5 - 8212 - 000	P21 - 8	FS2 - 1617 - 000	P11 - 76		P B - J 55
FF5 - 8214 - 000	P12 - 4	FS2 - 9394 - 000	P30 - 65		P B - J 91
FG2 - 9358 - 000	P90 -	FS2 - 9475 - 000	P37 - 7		P B - J101
FG2 - 9361 - 000	P30 - 124	FS3 - 0137 - 000	P31 - 17		P B - J102
FG2 - 9362 - 000	P30 - 143	FS4 - 0177 - 000	P12 - 9		P B - J136
FG2 - 9363 - 000	P30 - 101	FS4 - 2360 - 000	P11 - 17		P B - J145
FG2 - 9364 - 000	P31 - 36	FS4 - 2362 - 000	P11 - 18	VS1 - 0842 - 003	P B - J 3
FG2 - 9365 - 000	P30 - 142	FS5 - 3731 - 000	P30 - 66		P B - J 22
FG2 - 9366 - 000	P35 - 51	FS5 - 3732 - 000	P21 - 4		P B - J 26
FG2 - 9368 - 000	P12 - 10	FS5 - 3733 - 000	P11 - 19		P B - J 27
FG2 - 9370 - 000	P11 - 54	FS5 - 3734 - 000	P35 - 20		P B - J 31
FG2 - 9371 - 000	P11 - 24	FS5 - 3735 - 000	P35 - 21		P B - J 52
FG2 - 9372 - 000	P35 - 32	FS5 - 3736 - 000	P11 - 77		P B - J 56
FG2 - 9373 - 000	P35 - 33	FS5 - 6323 - 000	P21 - 10		P B - J 92
FG2 - 9374 - 000	P11 - 34		P35 - 22		P B - J122
FG2 - 9375 - 000	P12 - 11	FS5 - 6649 - 000	P35 - 39		P B - J123
FG2 - 9376 - 000	P12 - 12	FS5 - 6650 - 000	P35 - 45		P B - J124
FG2 - 9377 - 000	P12 - 13	FS5 - 6651 - 000	P37 - 13		P B - J140
FG2 - 9380 - 000	P31 - 39	FS5 - 9439 - 000	P37 - 8		P B - J142
FG2 - 9381 - 000	P30 - 125	FS5 - 9570 - 000	P11 - 51		P B - J143
FG2 - 9382 - 000	P30 - 86	FS5 - 9571 - 000	P11 - 63		P B - J146
FG2 - 9383 - 000	P30 - 87	FS7 - 0312 - 000	P30 - 67		P B - J147
FG2 - 9384 - 000	P31 - 18	FS7 - 0313 - 000	P30 - 68		P B - J148
FG2 - 9385 - 000	P30 - 88	FS7 - 0314 - 000	P30 - 69	VS1 - 0842 - 004	P B - J 10
FG6 - 2726 - 000	P12 -	FS7 - 0315 - 000	P30 - 70		P B - J 25
FG6 - 2727 - 000	P12 -	FS7 - 0317 - 000	P30 - 113		P B - J149
FG6 - 2728 - 000	P12 -	FS7 - 0318 - 000	P31 - 13	VS1 - 0842 - 005	P B - J 9
FG6 - 2729 - 000	P12 -	FS7 - 0319 - 000	P11 - 78		P B - J144
FG6 - 2730 - 000	P30 -	FS7 - 0321 - 000	P35 - 23	VS1 - 0842 - 006	P B - J 11
FG6 - 2731 - 000	P30 -	FS7 - 0322 - 000	P31 - 14		P B - J111
FG6 - 2735 - 000	P35 -	FS7 - 2022 - 000	P11 - 20		P B - J131
FG6 - 2736 - 000	P35 -	FS7 - 2023 - 000	P20 - 4		P B - J133
FG6 - 2737 - 000	P35 -	FS7 - 2024 - 000	P11 - 79		P B - J134
FG6 - 2738 - 000	P35 -	FS7 - 2025 - 000	P11 - 21		P B - J135
FG6 - 2739 - 000	P10 - 9	FS7 - 2026 - 000	P11 - 22	VS1 - 0842 - 007	P B - J 23
FG6 - 2740 - 000	P13 -	FS7 - 2027 - 000	P21 - 5	VS1 - 0842 - 008	P B - J132
FG6 - 2741 - 000	P13 -	FS7 - 2028 - 000	P30 - 71	VS1 - 0842 - 009	P B - J141
FG6 - 2744 - 000	P30 - 89	FS7 - 2029 - 000	P30 - 72	VS1 - 0842 - 011	P B - J 14
FG6 - 2745 - 000	P30 - 95	FS7 - 2030 - 000	P30 - 104	VS1 - 0842 - 012	P B - J 21
FG6 - 2746 - 000	P31 -	FS7 - 2031 - 000	P30 - 82	VS1 - 0842 - 013	P B - J 5
FG6 - 2748 - 000	P31 - 35	FS7 - 2032 - 000	P30 - 109		P B - J 6
FG6 - 2749 - 000	P31 - 37	FS7 - 2033 - 000	P30 - 73		P B - J601
FG6 - 2755 - 000	P30 - 126	FS7 - 2034 - 000	P30 - 114	VS1 - 0842 - 014	P B - J 7
FG6 - 2772 - 000	P37 -	FS7 - 2035 - 000	P30 - 116		P B - J 13
FG6 - 2773 - 000	P36 -	FS7 - 2036 - 000	P30 - 74		P B - J 71
FG6 - 2774 - 000	P36 -	FS7 - 2037 - 000	P30 - 121	VS1 - 0842 - 015	P B - J 2
FG6 - 2775 - 000	P36 -	FS7 - 2038 - 000	P30 - 75		P B - J 12
FG6 - 2776 - 000	P36 -	FS7 - 2039 - 000	P30 - 76		P B - J 51
FG6 - 2779 - 000	P35 - 42	FS7 - 2043 - 000	P30 - 94	VS1 - 0852 - 003	P B - J121
FG6 - 2782 - 000	P12 - 16	FS7 - 2049 - 000	P35 - 24		P B - J125
FG6 - 2783 - 000	P91 -	FS7 - 2050 - 000	P35 - 25	VS1 - 0852 - 011	P B - J 14
FG6 - 2785 - 000	P35 - 46	FS7 - 2051 - 000	P35 - 26	VS1 - 5057 - 002	P B - J 24
FG6 - 2792 - 000	P11 - 31	PCB	P B - J 1		P B - J 54
FG6 - 2793 - 000	P11 - 65		P B - J 2		P B - J 91

PART NUMBER	FIGURE & KEY NO.	PART NUMBER	FIGURE & KEY NO.	PART NUMBER	FIGURE & KEY NO.
VS1 - 5057 - 002	P B - J101 P B - J102 P12 - 11A P30 - 84 P30 - 144 P35 - 32A	XB1 - 3300 - 607 XB2 - 8300 - 809 XB4 - 7300 - 606 XB4 - 7300 - 609	P36 - 503 P11 - 508 P36 - 501 P12 - 501 P13 - 501 P30 - 501 P31 - 508 P35 - 506		
VS1 - 5057 - 003	P B - J 22 P B - J 92 P B - J140 P21 - 9 P30 - 87A P35 - 32B	XB4 - 7300 - 806 XB4 - 7300 - 809 XB6 - 2400 - 409 XB6 - 7260 - 409 XB6 - 7300 - 409	P36 - 504 P37 - 501 P11 - 515 P30 - 510 P20 - 501 P30 - 503 P31 - 502		
VS1 - 5057 - 005	P B - J144 P30 - 85		P30 - 512 P10 - 501 P11 - 513 P20 - 504 P11 - 512		
VS1 - 5057 - 006	P B - J111 P B - J131 P B - J133 P30 - 123 P30 - 145 P31 - 39A	XB6 - 7300 - 609 XB6 - 7400 - 606 XB6 - 7400 - 609 XB6 - 7400 - 809	P30 - 512 P10 - 501 P11 - 513 P20 - 504 P11 - 512		
VS1 - 5057 - 007	P B - J 23 P35 - 32C	XB7 - 2100 - 409 XD1 - 1104 - 135	P11 - 510 P36 - 505 P30 - 523		
VS1 - 5057 - 008	P B - J132 P30 - 86A	XD1 - 1108 - 222 XD2 - 1100 - 202	P11 - 507 P11 - 511		
VS1 - 5057 - 009	P B - J141 P31 - 18A	XD2 - 1100 - 322	P21 - 503 P30 - 505		
VS1 - 5057 - 012	P B - J 21 P35 - 32D		P31 - 509 P11 - 521 P30 - 502		
VS1 - 5824 - 007	P B - J 1	XD2 - 1100 - 402	P35 - 501 P21 - 505 P30 - 513		
VS3 - 5080 - 007	P B - J 0		P35 - 505 P11 - 506 P30 - 517		
VS3 - 5083 - 003	P B - J 4		P31 - 505 P35 - 511		
VS9 - 5009 - 022	P B - J 14	XD2 - 1100 - 422 XD2 - 1100 - 502	P31 - 506 P30 - 516 P36 - 502		
VT2 - 0006 - 014	P11 - 47		P30 - 519 P35 - 507 P12 - 503		
WG1 - 5373 - 000	P91 - LED301		P30 - 520 P11 - 504 P30 - 521		
WG8 - 5362 - 000	P11 - 52 P20 - 5 P30 - 77 P31 - 15 P35 - 27	XD2 - 1100 - 642	P31 - 510 P35 - 512 P21 - 504 P11 - 502		
WG8 - 5421 - 000	P11 - 4 P35 - 31	XD2 - 1100 - 802 XD2 - 1200 - 502 XD2 - 2100 - 302 XD2 - 2100 - 402	P30 - 511 P35 - 504 P30 - 509 P35 - 510 P31 - 501 P11 - 518 P30 - 515		
WS3 - 5044 - 000	P B - J 0		P30 - 518		
WS3 - 5160 - 000	P B - J 4		P11 - 501 P11 - 25 P30 - 79		
WS3 - 5358 - 000	P B - J 1		P30 - 141 P11 - 57 P30 - 138		
WT1 - 0240 - 000	P B - J 8 P B - J 81 P B - J 0	XD2 - 2100 - 602 XD2 - 2100 - 802	P35 - 28 P35 - 50 P21 - 7 P30 - 80 P30 - 81 P31 - 16 P11 - 55 P30 - 102		
WT1 - 5155 - 000	P30 - 78		P11 - 509 P31 - 34 P11 - 26 P30 - 83 P35 - 29		
WT2 - 5041 - 000	P11 - 80		P20 - 6 P35 - 30		
WT2 - 5565 - 000	P10 - 17				
XA9 - 0605 - 000	P10 - 16	XD3 - 1200 - 142 XD3 - 1200 - 162 XD3 - 1300 - 102 XD3 - 1300 - 122 XD3 - 1300 - 162 XD3 - 2200 - 082 XD3 - 2200 - 102 XD3 - 2200 - 122			
XA9 - 0606 - 000	P10 - 15				
XA9 - 0643 - 000	P11 - 23				
XA9 - 0679 - 000	P11 - 36				
XA9 - 0732 - 000	P10 - 18				
XA9 - 0780 - 000	P30 - 139				
XA9 - 0894 - 000	P31 - 40				
XA9 - 1013 - 000	P30 - 137				
XA9 - 1028 - 000	P31 - 33				
XA9 - 1035 - 000	P30 - 140				
XB1 - 1300 - 609	P31 - 504				
XB1 - 2300 - 409	P11 - 516 P21 - 502 P30 - 522 P31 - 503 P35 - 503	XD9 - 0151 - 000 XD9 - 0152 - 000 XF2 - 1605 - 660 XF9 - 0354 - 000 XF9 - 0358 - 000 XF9 - 0359 - 000 XF9 - 0543 - 000 XF9 - 0682 - 000 XF9 - 0683 - 000 XF9 - 0684 - 000 XF9 - 0685 - 000 XF9 - 0699 - 000 XG2 - 4010 - 405 XG9 - 0211 - 000 XG9 - 0237 - 000			
XB1 - 2300 - 606	P11 - 505 P30 - 504				
XB1 - 2300 - 609	P30 - 508 P35 - 502				
XB1 - 2400 - 409	P11 - 522 P21 - 501 P30 - 514				
XB1 - 2400 - 606	P10 - 502 P11 - 503 P11 - 520 P12 - 502				
XB1 - 2400 - 609	P11 - 514 P20 - 503 P30 - 507 P35 - 508				
XB1 - 2400 - 809	P11 - 519 P20 - 502 P30 - 506				
XB1 - 2401 - 609	P11 - 517				

Prepared by
OFFICE IMAGING PRODUCTS TECHNICAL SUPPORT DEPT.1
OFFICE IMAGING PRODUCTS TECHNICAL SUPPORT DIV.
CANON INC.
Printed in Japan

REVISION 0 [JAN. 1999]

5-1, Hakusan 7-chome, Toride-shi, Ibaraki 302-8501, Japan

Canon