



KM-2035
KM-1635

PARTS LIST

Published in October 2005
2HBPL070
842HB120
First Edition

NOTES

1. Indicate parts number and machine model when placing an order.

e.g.	Parts Number	Parts Name	Machine Model	Frequency	Quantity
	302HA04010	FRONT RIGHT COVER	KM-2035	50/60Hz	1
	302HB04010	FRONT RIGHT COVER	KM-1635	50/60Hz	1

2. Service calls and freight will be charged separately.

3. Symbols in the "Parts Number" column.

- Parts with "•" are component parts or sub-assemblies of the assembly appearing immediately above them.

e.g.	Parts Number	Parts Name	Parts Number	Parts Name
	2C982010	SET MK-410	•2C918010	BLADE CLEANING
			•2C918340	HOLDER CLAW

- Parts with "••" are component parts or sub-assembly with "•" appearing immediately above them.

e.g.	Parts Number	Parts Name	Parts Number	Parts Name
	•2C993020	PARTS, MC-410, SP	••2C910040	GRID
			••5MMW141LX002	SPRING WIRE

- Parts with "⊙" indicates the spare parts and the parts without "⊙" can not be supplied.

4. Items indicated in Description column as (OPTION) are supply parts and should be ordered through your Regional Office.

— CONTENTS —

FIG. 1	Covers	2	FIG. 11	Driving & Cooling	22
FIG. 2	Frames	4	FIG. 12	Electrical Components	24
FIG. 3	Cassette	6	FIG. 13	Operation Unit	26
FIG. 4	Conveying	8	FIG. 14	Original Holder	28
FIG. 5	Paper Feed-in	10	FIG. 15	Option I (DU-410)	30
FIG. 6	Bypass	12	FIG. 16	Option II	32
FIG. 7	Exit	14	FIG. 17	Tools & Accessories	34
FIG. 8	Scanner	16	• INDEX		36
FIG. 9	Imaging Unit	18			
FIG. 10	Fuser Unit	20			

FIG. 1 Covers

2HA/2HB

SP	Ref. No.	Part.No.	Alternative.	Description	Quantity			
					110	120	230	240
⊙	1	2C902140		HINGE FRONT COVER	1	1	1	1
⊙	2	302HB04010	2HB04010	FRONT RIGHT COVER (16ppm)	1	1	1	1
⊙	2	302HA04010	2HA04010	FRONT RIGHT COVER (20ppm)	1	1	1	
⊙	3	2C904470		FRONT LEFT COVER(K)	1	1	1	1
⊙	4	302C904031	2C904031	TRAY EXIT (1/2)	1	1	1	1
⊙	5	2C904041		RIGHT COVER	1	1	1	1
⊙	6	2C904060		LEFT LOW COVER	1	1	1	1
⊙	7	2C904070		UPPER FRONT COVER	1	1	1	1
⊙	8	2C904080		FRONT SIDE COVER UP	1	1	1	1
⊙	9	2C904090		FRONT TOP COVER	1	1	1	1
⊙	10	2C904100		RIGHT TOP COVER	1	1	1	1
⊙	11	2C904110		LEFT TOP COVER	1	1	1	1
⊙	12	2C904120		REAR TOP COVER	1	1	1	1
⊙	13	2C904130		FRONT SIDE COVER MID	1	1	1	1
⊙	14	2C904140		FRONT SIDE COVER LOW	1	1	1	1
⊙	15	2C904150		INNER REAR COVER	1	1	1	1
⊙	16	2C904160		INNER LEFT COVER	1	1	1	1
⊙	17	2C904170		REAR COVER	1	1	1	1
⊙	18	2C904180		LEFT FRONT COVER	1	1	1	1
⊙	19	2C904190		LEFT REAR COVER	1	1	1	1
⊙	20	2C904200		LEFT MIDDLE COVER	1	1	1	1
⊙	21	2C904290		PLATE FRONT COVER	1	1	1	1
⊙	22	302C904372	2C904372	INNER FRONT COVER	1	1	1	1
⊙	23	2C904410		COVER DSUB	1	1	1	1
⊙	24	2C905080		LABEL CONVEYING JAM	1	1	1	1
⊙	25	2C905100		LABEL RADIATION	1	1	1	1
⊙	26	2C912430		LID KMAS	1	1	1	1
⊙	27	2C926130		SHIELD RIGHT COVER	1	1	1	1
⊙	28	60804120		MAGNET CATCH	1	1	1	1
⊙	29	2BL05070		LABEL SEP CLEANING	1	1	1	1
⊙	30	2BL16220	5AAVBRUSH036	BRUSH CLEANER ASSY	1	1	1	1
⊙	31	2C918150		TANK DISPOSAL	1	1	1	1
⊙	32	2C918170		CAP TANK DISPOSAL	1	1	1	1
⊙	33	2AV73580		LABEL, TONER DISPOSAL TANK HK	1	1	1	1
⊙	34	302C904560	2C904560	STOPPER COVER DSUB	1	1	1	1
⊙	35	2C904480		FILM FRONT COVER	1	1	1	1
⊙	36	2C905220		LABEL LEFT COVER	1	1	1	1
⊙	37	2C904510		SPONGE COVER	1	1	1	1

SP	Ref. No.	Part.No.	Alternative.	Description	Quantity			
					110	120	230	240
	101	B1B04100		+BIND SCREW M4X10(TRIVALENT CHROMA				
	102	5MBTPB3006TW++R	B1A53060	BIND T.T SCREW(+) / M3 X 6 CRFREE S-T				
	103	5MBTPB3008PW++R	B1A63080	BIND T.T SCREW(+) / M3 X 8 CRFREE P-T				
	104	BAA64100		+TP TAP-TITE P SCREW M4X10				
	105	BAB54100		+TP TAP-TITE S SCREW M4X10				

- Parts with "•" are component parts or sub-assemblies of the assembly appearing immediately above them.
- Parts with "⊙" indicates the spare parts.

- Parts with "••" are component parts or sub-assembly with "•" appearing immediately above them.

FIG. 2 Frames

2HA/2HB

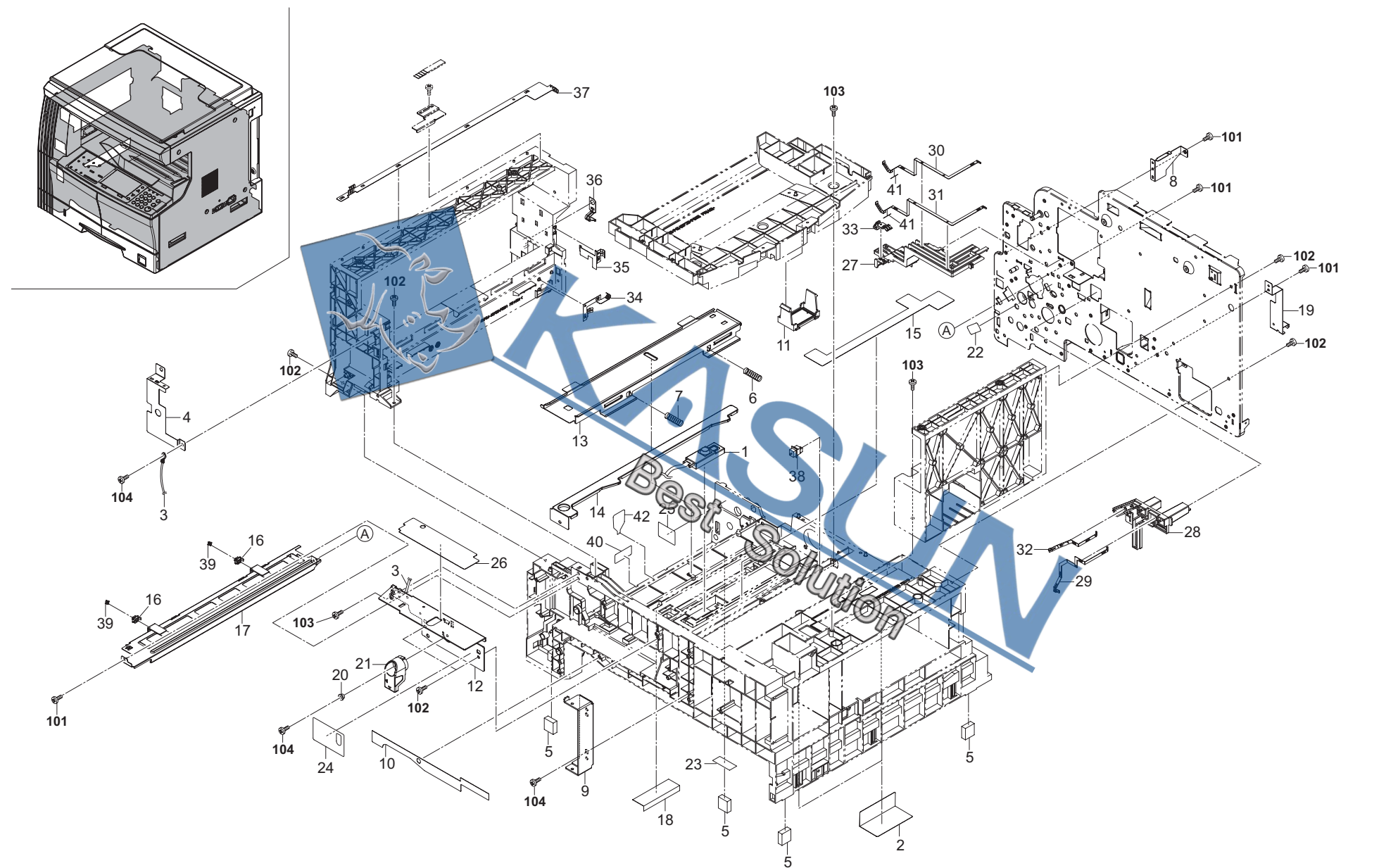


FIG. 2 Frames

2HA/2HB

SP	Ref. No.	Part.No.	Alternative.	Description	Quantity			
					110	120	230	240
⊙	1	2C901180	2C902152	CONT SENSOR ASSY	1	1	1	1
	2	2C902230		FILM BASE L	2	2	2	2
	3	2C927790		WIRE UPPER LEFT	1	1	1	1
	4	2C926150		SHIELD UPPER LEFT B	1	1	1	1
	5	2C902070		BASE RUBBER	4	4	4	4
	6	2C902080		SPRING DEV PUSH	1	1	1	1
	7	2C902590		SPRING DEV PUSH F	1	1	1	1
	8	2C902100		MOUNT REAR COVER	1	1	1	1
	9	2C902110		MOUNT FRONT COVER	1	1	1	1
	10	2C902120		PANEL FRONT	1	1	1	1
	11	2C902130		MOUNT CONT PCB	1	1	1	1
	12	302C902152		MOUNT CONT LEVER	1	1	1	1
	13	2C902160		RAIL DLP	1	1	1	1
	14	2C902170		LEVER DEV PUSH	1	1	1	1
	15	2C902180	2FT26040	FILM BASE	1	1	1	1
	16	2C902280		HOLDER PULLEY	2	2	2	2
	17	2C902200		RAIL CLEANING	1	1	1	1
	18	2C902240		FILM BASE B	1	1	1	1
	19	2C902260		GROUND PLATE FRAME	1	1	1	1
	20	2C902520		COLLAR LEVER CONT.	1	1	1	1
	21	2C902540		LEVER LOCK CONT.	1	1	1	1
	22	302FT26040		FILM TERMINAL MAIN	1	1	1	1
	23	2C902270		SPACER BASE	1	1	1	1
	24	2C905071		LABEL CONT SET	1	1	1	1
	25	2C905110	2C925192	LABEL DRUM CAUTION	1	1	1	1
	26	302C925192		SHEET OPERATION PCB	1	1	1	1
	27	2C926010		BASE TERMINAL TRANSFER	1	1	1	1
	28	2C926020		BASE TERMINAL MAIN	1	1	1	1
	29	2C926030	2C926041	TERMINAL DLP	1	1	1	1
	30	302C926041		TERMINAL TRANSFER	1	1	1	1
	31	302C926051	2C926051	TERMINAL SEPARATION	1	1	1	1
	32	2C926060	2C926111	TERMINAL MAIN	1	1	1	1
	33	2C926080		GROUND PLATE CONVEYING	1	1	1	1
	34	2C926100		TERMINAL FUSER	1	1	1	1
	35	302C926111		GROUND PLATE EXIT	1	1	1	1
	36	2C926120		GROUND PLATE FUSER	1	1	1	1
	37	2C926140		SHIELD UPPER LEFT	1	1	1	1
	38	2C927140		SWITCH CONTAINER	1	1	1	1
	39	2A118370		PULLEY,DRUM SEPARATION	2	2	2	2
	40	302C906430	2C906430	SPACER BYPASS	1	1	1	1
	41	302C926170	2C926170	TAPE TERMINAL	2	2	2	2
	42	302DA06100	2DA06100	FILM ACTUATOR BYPASS	1	1	1	1
⊙	101	5MBTPB3006TW++R	B1A53060	BIND T.T SCREW(+) / M3 X 6 CRFREE S-T				
	102	5MBTPB4010PW++R	B1A64100	BIND T.T SCREW(+) / M4 X 10 CRFREE P-T				
	103	B1A64120		+BIND TAP-TITE P SCREW M4X12				
	104	BAA64100		+TP TAP-TITE P SCREW M4X10				

- Parts with "•" are component parts or sub-assemblies of the assembly appearing immediately above them.
- Parts with "⊙" indicates the spare parts.

- Parts with "••" are component parts or sub-assembly with "•" appearing immediately above them.

FIG. 3 Cassette

2HA/2HB

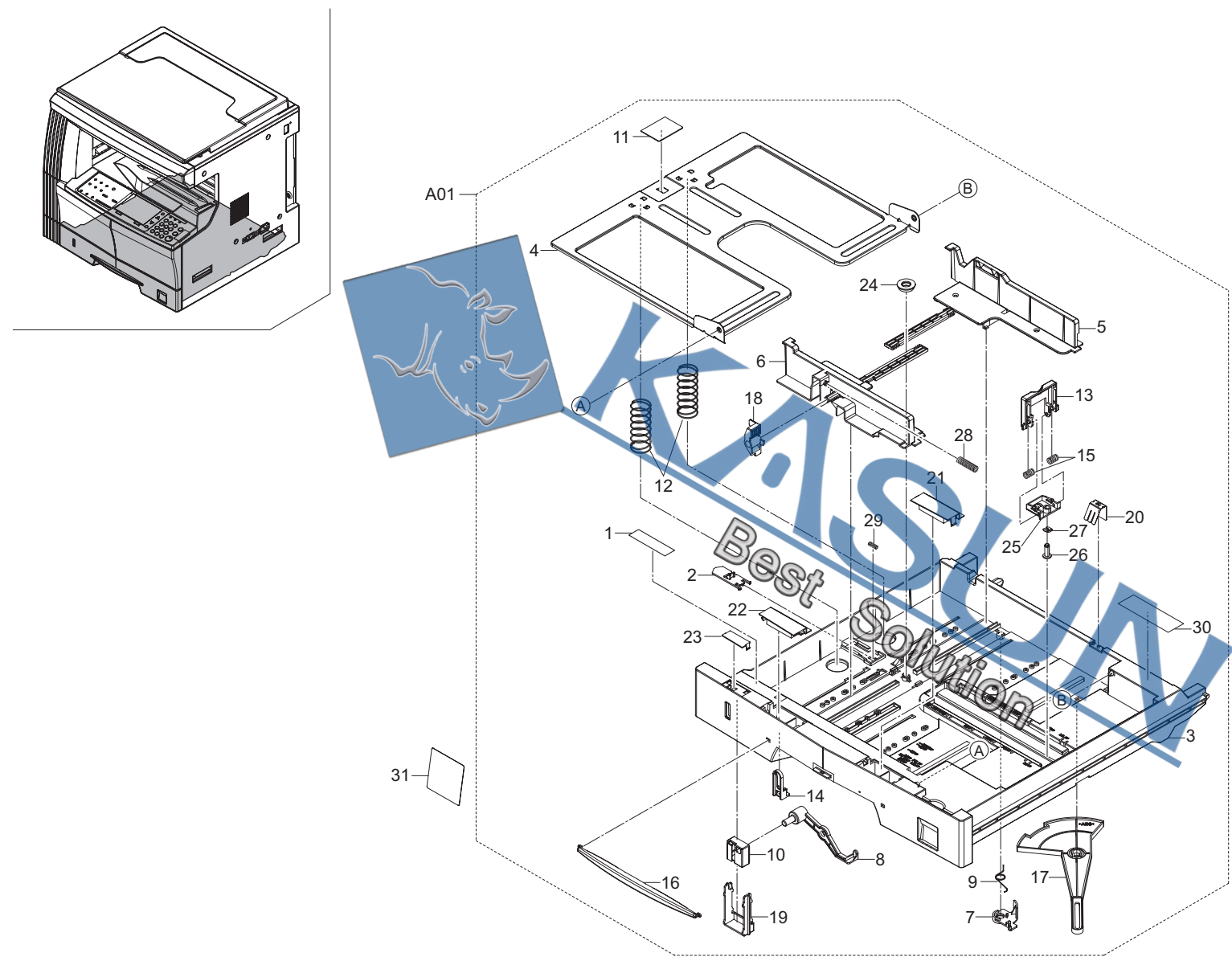


FIG. 3 Cassette

2HA/2HB

SP	Ref. No.	Part.No.	Alternative.	Description	Quantity			
					110	120	230	240
⊙	A01	302C993011	2C993011	PARTS,CT-410,SP	1	1	1	1
	1	*302C905280	2C905280	LABEL CASSETTE	1	1	1	1
	2	*19507050		LEVER,CASSETTE BASE RELEASE	1	1	1	1
	3	*2C907010		CASSETTE	1	1	1	1
	4	*2C907020		BOTTOM CASSETTE	1	1	1	1
⊙	5	*2C907030		REAR CURSOR C	1	1	1	1
⊙	6	*2C907040		FRONT CURSOR C	1	1	1	1
	7	*2C907050		PLATE SIDE SW	1	1	1	1
	8	*2C907070		LEVER INDICATOR	1	1	1	1
⊙	9	*2C907090		SPRING SIDE SW	1	1	1	1
	10	*2C907110		MARKER INDICATOR	1	1	1	1
⊙	11	*2C907140		PAD CASSETTE	1	1	1	1
⊙	12	*2C907150		SPRING BOTTOM	2	2	2	2
⊙	13	*2C907190		RIGHT CURSOR A	1	1	1	1
	14	*2C907200		STOPPER ARM	1	1	1	1
	15	*2C907360		SPRING CURSOR R	2	2	2	2
⊙	16	*2C907370		MARKER CASSETTE	1	1	1	1
	17	*2C907380		TURN PLATE CASSETTE	1	1	1	1
⊙	18	*2C907390		LEVER CURSOR C	1	1	1	1
	19	*2C907490		STOPPER INDICATOR	1	1	1	1
	20	*2C907500		GROUND PLATE BOTTOM	1	1	1	1
	21	*2C907550		LID CASSETTE A	1	1	1	1
	22	*2C907560		LID CASSETTE B	1	1	1	1
	23	*2C907570		LID CASSETTE C	1	1	1	1
⊙	24	*34907141		GEAR 18,CASSETTE	1	1	1	1
⊙	25	*2C907590		HOLDER RIGHT CURSOR	1	1	1	1
⊙	26	*2C907600		PIN CURSOR C	1	1	1	1
⊙	27	*5MVX111DN003	2A806250	RING STOPPER	1	1	1	1
⊙	28	*2C907620		SPRING LEVER F	1	1	1	1
⊙	29	*76508130		SPRING BELT GUIDE ROLLER	1	1	1	1
	30	*2C905200		LABEL CASSETTE LGR	1	1	1	1
⊙	31	2C905230		SHEET CASSETTE SIZE(C)	1	1	1	1
⊙	31	2C905240		SHEET CASSETTE SIZE(I)	1	1	1	1

- Parts with "•" are component parts or sub-assemblies of the assembly appearing immediately above them.
- Parts with "⊙" indicates the spare parts.

- Parts with "••" are component parts or sub-assembly with "•" appearing immediately above them.

FIG. 4 Conveying

2HA/2HB

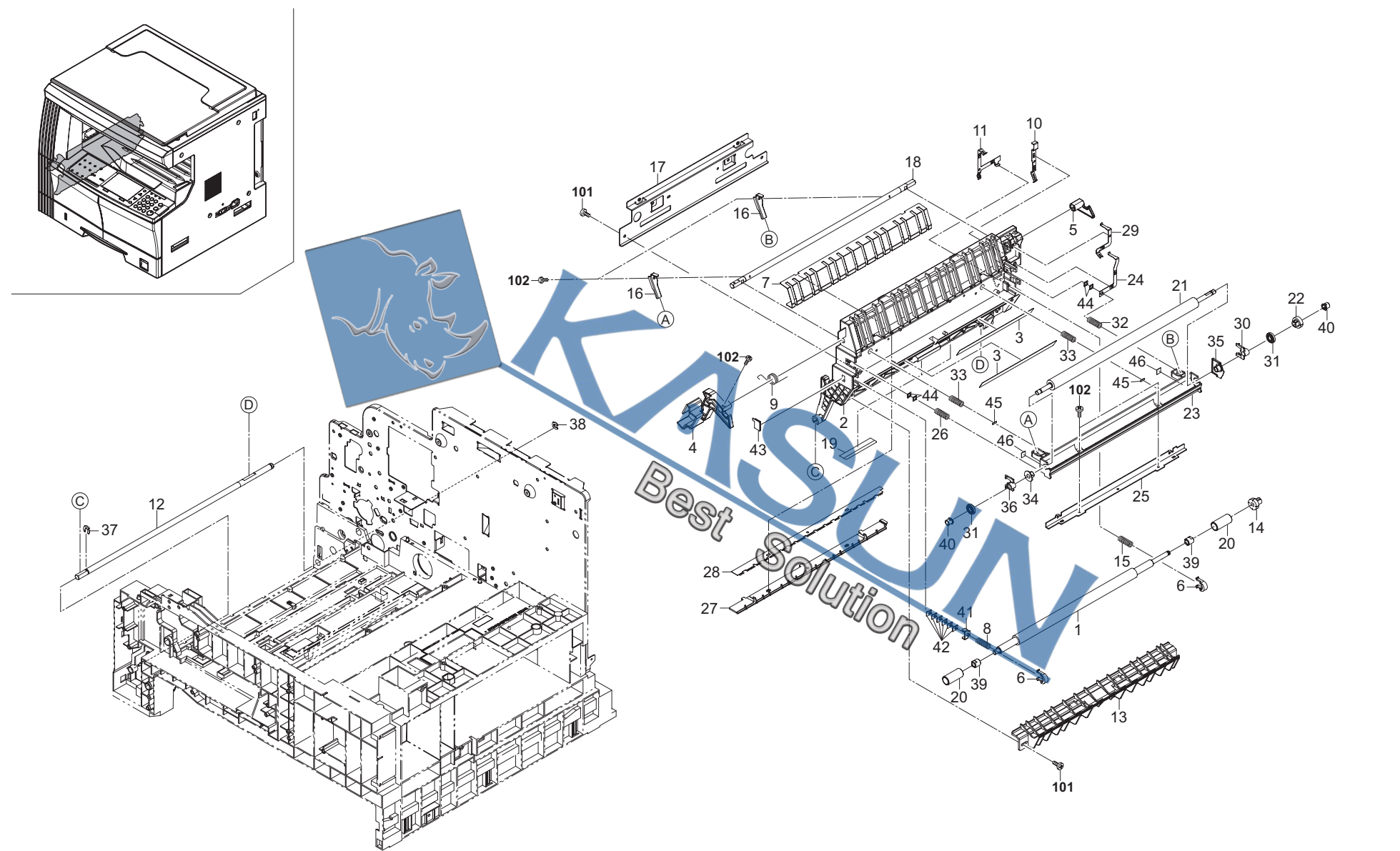


FIG. 4 Conveying

2HA/2HB

SP	Ref. No.	Part.No.	Alternative.	Description	Quantity			
					110	120	230	240
⊙	1	302C916021	2C916021	ROLLER REGIST LEFT	1	1	1	1
	2	302C916032	2C916032	BASE CONVEYING	1	1	1	1
⊙	3	302DA16010	2DA16010	FILM REGIST GUIDE L	2	2	2	2
⊙	4	2C916060		LEVER CONVEYING FRONT	1	1	1	1
⊙	5	2C916070		LEVER CONVEYING REAR	1	1	1	1
⊙	6	2C916080		STOPPER BUSH REG	2	2	2	2
	7	2C916090		GUIDE CONVEYING	1	1	1	1
	8	2C916100		SPRING REGIST F	1	1	1	1
	9	2C916120		SPRING CONVEYING BASE	1	1	1	1
	10	2C916130		GROUND PLATE REG	1	1	1	1
	11	2C916140		GROUND PLATE CONVEYING	1	1	1	1
	12	302C916161	2C916161	SHAFT CONVEYING	1	1	1	1
	13	2C916170		GUIDE FEED A	1	1	1	1
⊙	14	2C916180		GEAR Z/5 REG ST	1	1	1	1
	15	2C916190		SPRING REGIST F	1	1	1	1
	16	2C916200		LEVER TRANS GUIDE	2	2	2	2
	17	2C916220		REINFORCEMENT CONVEYING	1	1	1	1
	18	302C916231	2C916231	SHAFT CONVEYING LEVER	1	1	1	1
	19	2C916300		FILM DU GUIDE	2	2	2	2
	20	2C916250		COLLAR REGIST	2	2	2	2
⊙	21	302C917011	2C917011	ROLLER TRANSFER	1	1	1	1
⊙	22	2C917020		GEAR TRANSFER	1	1	1	1
	23	302C917031	2C917031	GUIDE LEFT TRANS FRONT	1	1	1	1
	24	2C917040		TERMINAL PLATE TRANS	1	1	1	1
	25	2C917050		REINFORCEMENT TRANS GUIDE	1	1	1	1
	26	2C917060		SPRING TRANS F	1	1	1	1
⊙	27	2C917070		HOUSING STA ELIMINATION	1	1	1	1
⊙	28	2C917080		PLATE STA ELIMINATION	1	1	1	1
	29	2C917090		TERMINAL STA ELIMINATION	1	1	1	1
⊙	30	2C917100		BUSH TRANSFER	1	1	1	1
⊙	31	2C917110		COLLAR TRANS	2	2	2	2
	32	2C917120		SPRING TRANS R	1	1	1	1
	33	2C917150		SPRING GUIDE TRANS	2	2	2	2
	34	2C917160		BUSH TRANS GUIDE F	1	1	1	1
	35	2C917170		BUSH TRANS GUIDE R	1	1	1	1
	36	2C917180		BUSH TRANS ROLL F	1	1	1	1
⊙	37	2BC06910		STOPPER 6	1	1	1	1
⊙	38	2BC06980		STOPPER 5	1	1	1	1
⊙	39	2C916260		BUSH REGIST	2	2	2	2
⊙	40	2BL17030		COLLAR TRANS ROLLER	2	2	2	2
	41	2C916270		SPACER REG F	1	1	1	1
	42	2C916280		SPACER REG T0.5	6	6	6	6
	43	2C916290		FILM CONV BASE	1	1	1	1
	44	2C917200		SPACER TRANS ROLL	4	4	4	4
	45	2C917210		SPACER GUIDE LEFT TRANS	2	2	2	2
	46	302FT17060	2FT17060	SPACER TRANS GUIDE B	2			

SP	Ref. No.	Part.No.	Alternative.	Description	Quantity			
					110	120	230	240
	101	5MBTPB3008PW++R	B1A63080	BIND T.T SCREW(+) / M3 X 8 CRFREE P-T				
	102	5MBTPB3006TW++R	B1A53060	BIND T.T SCREW(+) / M3 X 6 CRFREE S-T				

• Parts with "•" are component parts or sub-assemblies of the assembly appearing immediately above them.

• Parts with "⊙" indicates the spare parts.

• Parts with "••" are component parts or sub-assembly with "•" appearing immediately above them.

FIG. 5 Paper Feed-in

2HA/2HB

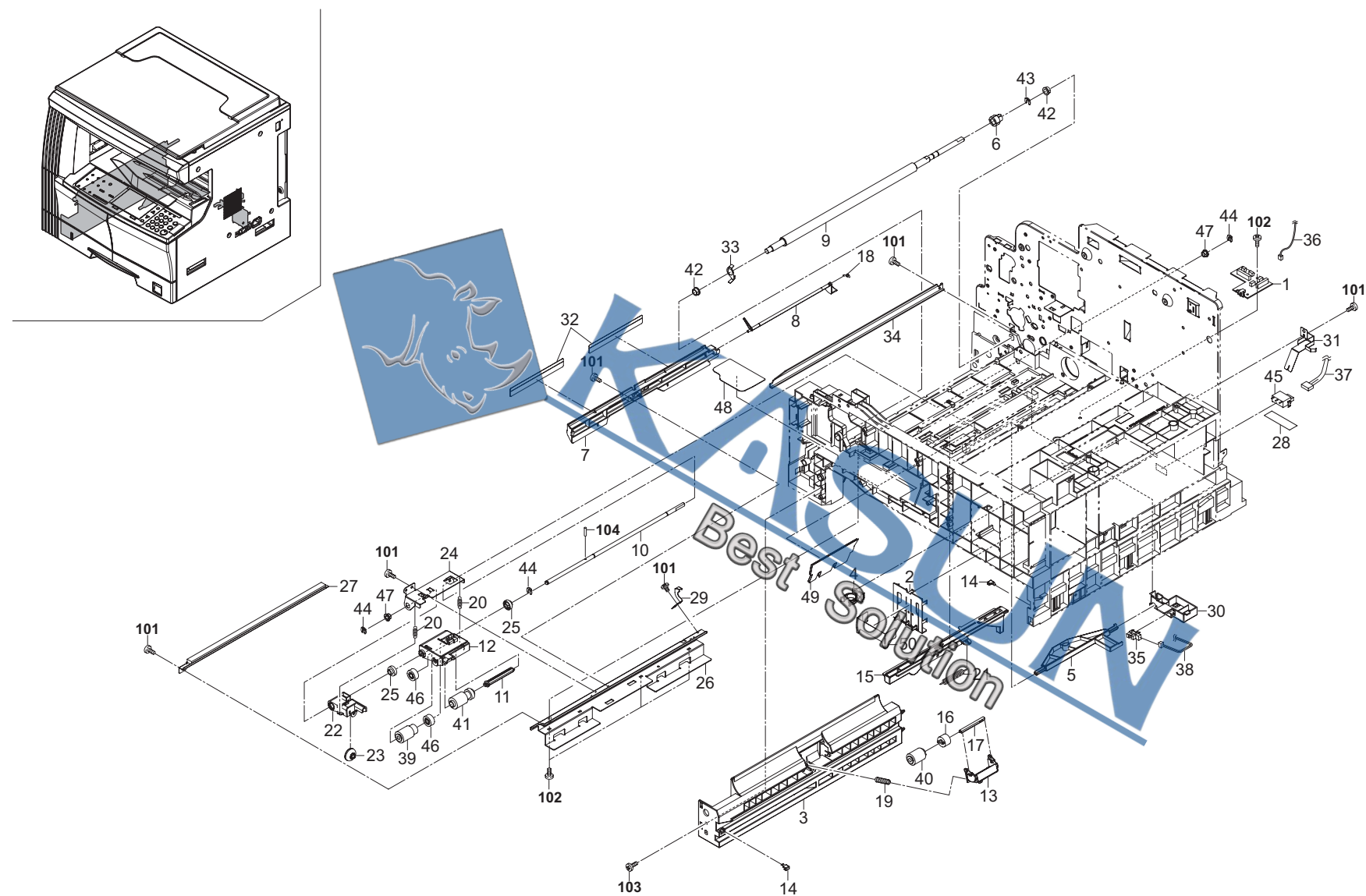


FIG. 5 Paper Feed-in

2HA/2HB

SP	Ref. No.	Part.No.	Alternative.	Description	Quantity			
					110	120	230	240
⊙	1	2C901100		PCB CASSETTE ASSY	1	1	1	1
	2	2C907060		PLATE SIZE DETECTION	1	1	1	1
	3	2C907080		LEFT RAIL CASSETTE	1	1	1	1
⊙	4	2C907100		STOPPER CASSETTE	1	1	1	1
⊙	5	2C907120		ACTUATOR EMPTY	1	1	1	1
⊙	6	2C907130		GEAR Z15 REGIST	1	1	1	1
	7	302C907161	2C907161	RIGHT GUIDE REGIST	1	1	1	1
⊙	8	302C907171	2C907171	ACTUATOR REGIST	1	1	1	1
	9	302C907181	2C907181	RIGHT ROLL REGIST	1	1	1	1
	10	302C907211	2C907211	SHAFT PAPER FEED	1	1	1	1
	11	2C907230		SHAFT PICK UP B	1	1	1	1
	12	2C907240		PLATE PICK UP	1	1	1	1
	13	2C907250		HOLDER RETAIN	1	1	1	1
⊙	14	2C907260		SLIDER RAIL	2	2	2	2
	15	2C907270		LEVER PICK UP	1	1	1	1
⊙	16	2C907280		TORQUE LIMITER S/C	1	1	1	1
	17	2C907300		SHAFT RETARD	1	1	1	1
⊙	18	2C907290		SPRING REGIST	1	1	1	1
	19	2C907320		SPRING RETARD	1	1	1	1
	20	2C907340		SPRING PICK UP	2	2	2	2
	21	2C907350		SPRING LEVER	1	1	1	1
	22	2C907400		HOLDER PULLEY A	1	1	1	1
	23	2C907410		PULLEY GUIDE A	1	1	1	1
	24	2C907420		HOLDER FEED SHAFT	1	1	1	1
⊙	25	2C907430		BUSH PAPER FEED C	2	2	2	2
	26	2C907440		RIGHT MOUNT REGIST	1	1	1	1
⊙	27	2C993210		PARTS,REGIST CLEANER,ASSY	1	1	1	1
⊙	28	302C907650	2C907650	SPACER SW	1	1	1	1
	29	2C907470		GROUND PLATE REG R	1	1	1	1
	30	2C907480		HOLDER SENSOR	1	1	1	1
	31	2C907510		GROUND PLATE CASS	1	1	1	1
	32	2C907530		FILM REGIST R	2	2	2	2
	33	2C907540		GROUND PLATE REG F	1	1	1	1
⊙	34	302C993320	2C993320	PARTS,FILM TRANS FRONT ASSY,SP J	1	1	1	1
⊙	35	2C927210		SENSOR 248NL1	1	1	1	1
	36	2C927520		WIRE CASSETTE PCB	1	1	1	1
	37	2C927670		WIRE CASSETTE SW	1	1	1	1
	38	2C927750		WIRE CASSETTE PE	1	1	1	1
⊙	39	2AR07220		PULLEY,PAPER FEED	1	1	1	1
⊙	40	2AR07230		PULLEY,SEPARATION	1	1	1	1
⊙	41	2AR07240		PULLEY,LEADING FEED	1	1	1	1
⊙	42	2BC06510		BUSHING 8	2	2	2	2
⊙	43	2BC06910		STOPPER 6	1	1	1	1
⊙	44	2BC06980		STOPPER 5	3	3	3	3
⊙	45	5ESP03090001+01	SP000360	PUSH SWITCH 03 SN	1	1	1	1
⊙	46	29807100		GEAR 16,BYPASS	2	2	2	2
⊙	47	3CY07080		BUSHING 6	2	2	2	2
	48	2C907610		SHEET TONER TANK	1	1	1	1
	49	2C907580		FILM BASE RIB	2	2	2	2
	50	2C907640		STOPPER PLATE SIZE	1	1	1	1

SP	Ref. No.	Part.No.	Alternative.	Description	Quantity			
					110	120	230	240
	101	5MBTPB3006TW++R	B1A53060	BIND T.T SCREW(+) / M3 X 6 CRFREE S-T				
	102	5MBTPB3008PW++R	B1A63080	BIND T.T SCREW(+) / M3 X 8 CRFREE P-T				
	103	B1A64120		+BIND TAP-TITE P SCREW M4X12				
	104	5MBP2010WXSP	E0020100	SPRING PIN / M2 X 10 S-BLK				

- Parts with "•" are component parts or sub-assemblies of the assembly appearing immediately above them.
- Parts with "⊙" indicates the spare parts.

- Parts with "••" are component parts or sub-assembly with "•" appearing immediately above them.

FIG. 6 Bypass

2HA/2HB

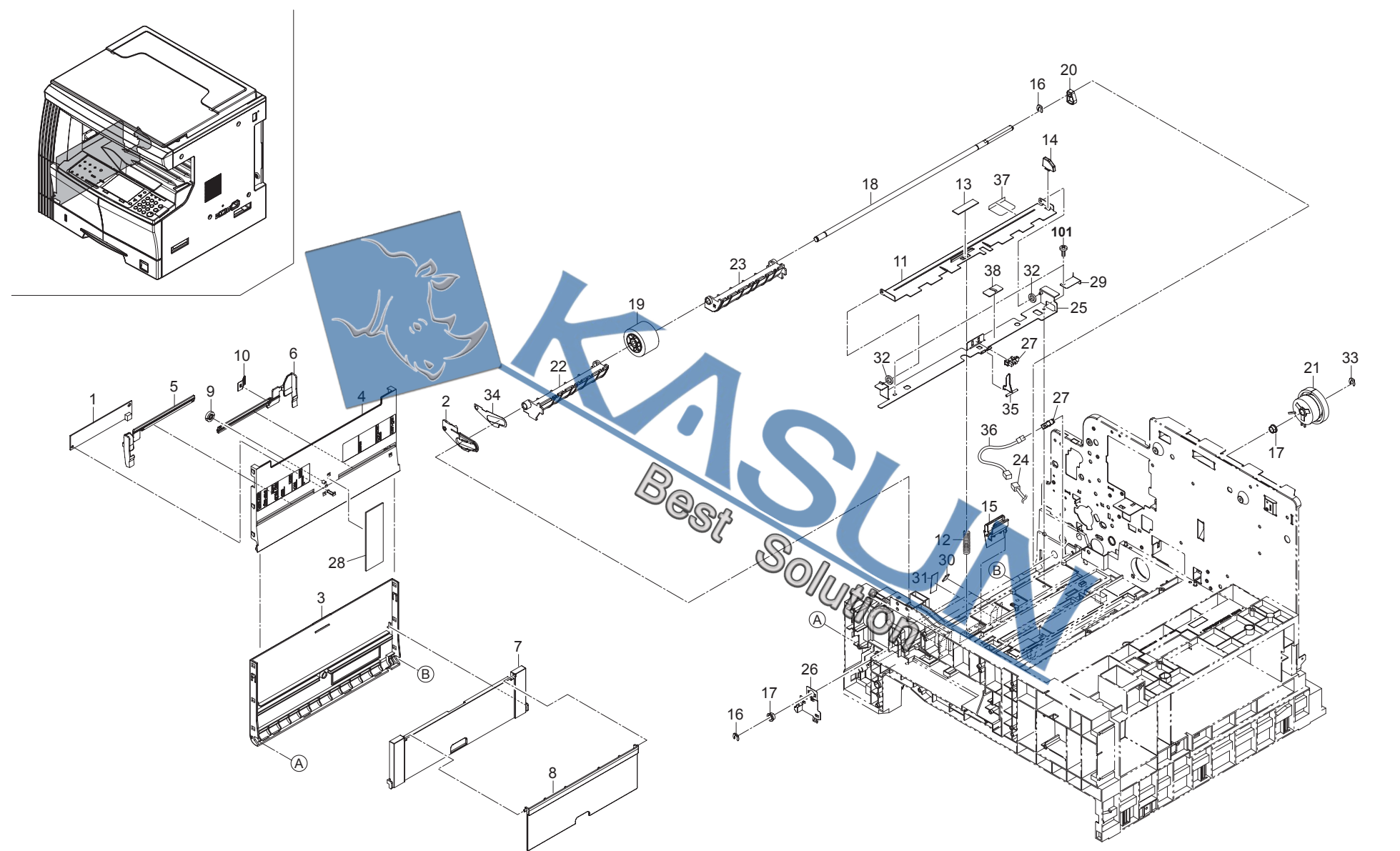


FIG. 6 Bypass

2HA/2HB

SP	Ref. No.	Part.No.	Alternative.	Description	Quantity			
					110	120	230	240
⊙	1	2C901050		PCB MPF SIZE ASSY	1	1	1	1
	2	2C904360		STRAP LEFT COVER C	1	1	1	1
⊙	3	2C906010		COVER BYPASS	1	1	1	1
⊙	4	2C906020		TABLE BYPASS	1	1	1	1
⊙	5	2C906030		FRONT CURSOR BYPASS	1	1	1	1
⊙	6	2C906040		REAR CURSOR BYPASS	1	1	1	1
⊙	7	2C906050		BYPASS SUB TABLE A	1	1	1	1
⊙	8	2C906060		BYPASS SUB TABLE B	1	1	1	1
⊙	9	2C906080		GEAR 18 BYPASS	1	1	1	1
	10	2C906090		TERMINAL PAPER SIZE	1	1	1	1
	11	2C906101		LIFT PLATE BYPASS	1	1	1	1
	12	2C906110		SPRING BYPASS LIFT	1	1	1	1
⊙	13	2C906120		SHEET BYPASS LIFT	1	1	1	1
⊙	14	2C906130		STOPPER BYPASS	1	1	1	1
⊙	15	2C993140		PARTS BYPASS CAM, SP	1	1	1	1
⊙	16	2BC06910		STOPPER 6	2	2	2	2
⊙	17	2BC06510		BUSHING 3	2	2	2	2
	18	302FT06011	2FT06011	SHAFT BYPASS	1	1	1	1
⊙	19	2C993130		PARTS, BYPASS PULLEY, SP	1	1	1	1
⊙	20	2C906190		CAM BYPASS	1	1	1	1
⊙	21	302FT27031	2FT27031	CLUTCH BYPASS	1	1	1	1
	22	2C906210		BYPASS PAPER GUIDE F	1	1	1	1
	23	2C906220		BYPASS PAPER GUIDE R	1	1	1	1
	24	302DA27531	2DA27531	WIRE MPF	1	1	1	1
	25	302C906242	2C906242	MOUNT LIFT PLATE	1	1	1	1
	26	2C906250		GROUND PLATE BYPASS	1	1	1	1
⊙	27	2C927210		SENSOR 248NL1	2	2	2	2
⊙	28	302DA06030	2DA06030	CUSHION BYPASS	1	1	1	1
	29	2C906280		GROUND PLATE LIFT	1	1	1	1
	30	2C906290		SHEET BYPASS GUIDE	2	2	2	2
⊙	31	2C906300		SEAL BYPASS GUIDE	2	2	2	2
	32	2C906310		SEAL BYPASS LIFT	2	2	2	2
⊙	33	2BC06980		STOPPER 5	1	1	1	1
	34	2C904490		PLATE FRONT STRAP	1	1	1	1
	35	2DA06010		ACTUATOR BYPASS	1	1	1	1
	36	302DA27580	2DA27580	WIRE MPF SW	1	1	1	1
⊙	37	302C906330	2C906330	FILM PROTECT BYPASS B	1	1	1	1
	38	M2105400		CLAMP, K-103G	1	1	1	1

SP	Ref. No.	Part.No.	Alternative.	Description	Quantity			
					110	120	230	240
	101	5MBTPB4010PW++R	B1A64100	BIND T.T SCREW(+) / M4 X 10 CRFREE P-T				

- Parts with "•" are component parts or sub-assemblies of the assembly appearing immediately above them.
- Parts with "⊙" indicates the spare parts.

- Parts with "••" are component parts or sub-assembly with "•" appearing immediately above them.

FIG. 7 Exit

2HA/2HB

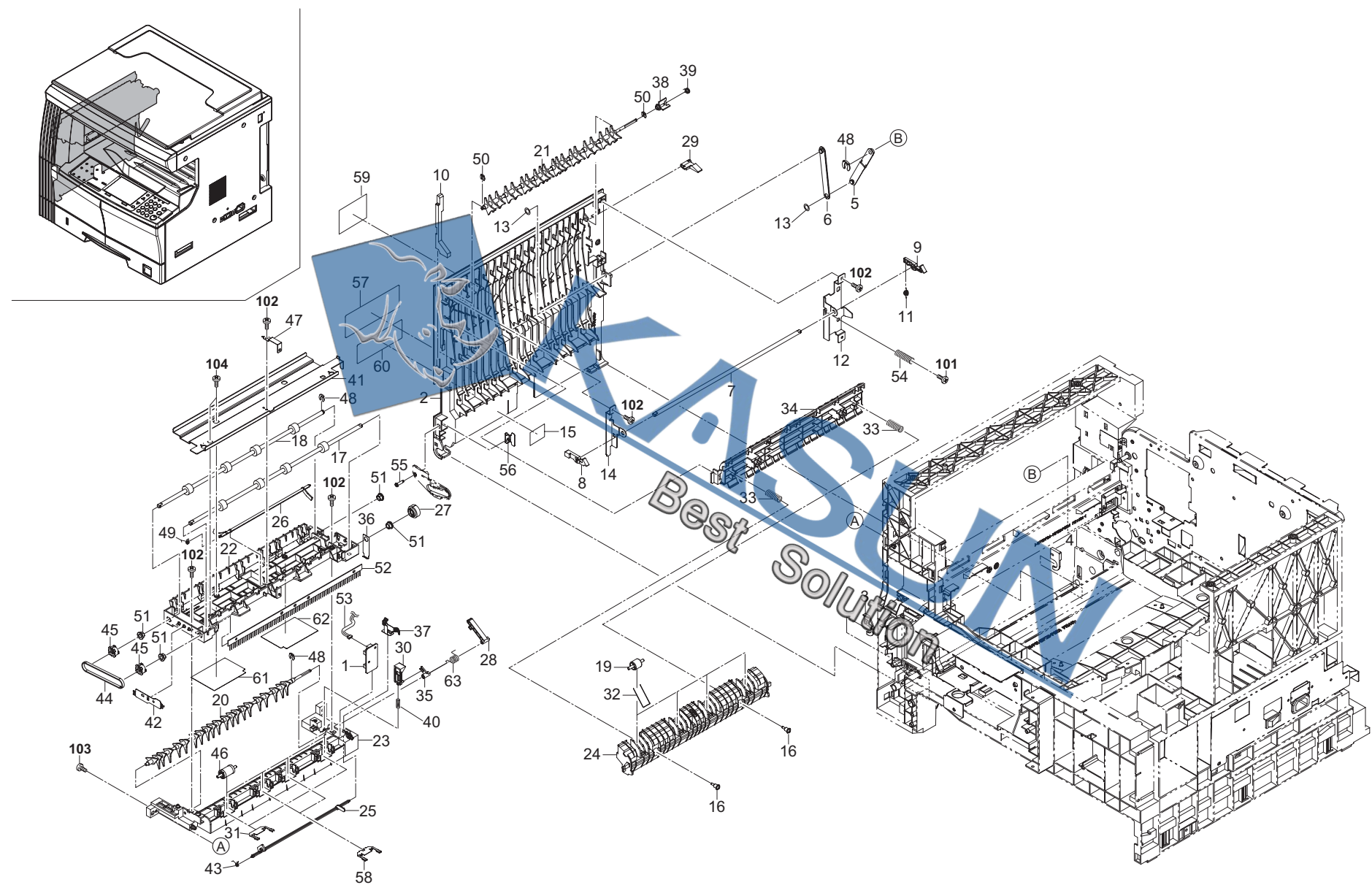


FIG. 7 Exit

2HA/2HB

SP	Ref. No.	Part.No.	Alternative.	Description	Quantity			
					110	120	230	240
⊙	1	2C901060	2C904251	PCB EJECT SW ASSY	1	1	1	1
⊙	2	2C904050		LEFT COVER	1	1	1	1
⊙	3	2C904210		STOPPER LEFT COVER F	1	1	1	1
⊙	4	2C904220		STOPPER LEFT COVER R	1	1	1	1
⊙	5	2C904231		STRAP LEFT COVER A	1	1	1	1
⊙	6	2C904241		STRAP LEFT COVER B	1	1	1	1
⊙	7	302C904251		SHAFT HOOK	1	1	1	1
⊙	8	2C904260		HOOK LEFT COVER F	1	1	1	1
⊙	9	2C904270		HOOK LEFT COVER R	1	1	1	1
⊙	10	2C904280		JUNCTION PLATE HOOK	1	1	1	1
⊙	11	2C904350		SPRING LEFT HOOK	1	1	1	1
⊙	12	2C904390		PLATE LEFT SIDE	1	1	1	1
⊙	13	2C904550		CUT WASHER 5	2	2	2	2
⊙	14	2C904430		PLATE LEFT HOOK	1	1	1	1
⊙	15	2C905090	2C921011	LABEL HIGH TIME	1	1	1	1
⊙	16	2C921400		SHOULDER SCREW 5	2	2	2	2
⊙	17	302C921011		ROLLER EXIT INNER	1	1	1	1
⊙	18	302C921021		ROLLER FEED SHIFT	1	1	1	1
⊙	19	2C921040		PULLEY FEED SHIFT	4	4	4	4
⊙	20	302C921051		GUIDE SHIFT	1	1	1	1
⊙	21	302C921062		GUIDE SEPARATE	1	1	1	1
⊙	22	302C921072		HOUSING EXIT UPPER	1	1	1	1
⊙	23	2C921080		HOUSING EXIT LOWER	1	1	1	1
⊙	24	2C921091		GUIDE EXIT LOWER	1	1	1	1
⊙	25	2C921100		ACTUATOR EXIT INNER	1	1	1	1
⊙	26	2C921110		ACTUATOR EXIT LEFT	1	1	1	1
⊙	27	2C921120		GEAR 23 EXIT	1	1	1	1
⊙	28	302C921151		ARM SHIFT	1	1	1	1
⊙	29	2C921160	2C921151	ARM SEPARATE	1	1	1	1
⊙	30	2C921180		ARM LINK	1	1	1	1
⊙	31	2C921190		SPRING PULLEY INNER	2	2	2	2
⊙	32	2C921200		SPRING PULLEY FEED SHIFT	4	4	4	4
⊙	33	2C921221		SPRING GUIDE DU	2	2	2	2
⊙	34	2C921231		GUIDE DU	1	1	1	1
⊙	35	2C921240		ARM SHIFT B	1	1	1	1
⊙	36	2C921390		PLATE EXIT HOLDER	1	1	1	1
⊙	37	2C921260		PLATE EARTH EXIT 2	1	1	1	1
⊙	38	2C921270		ARM SEPARATE B	1	1	1	1
⊙	39	2C921280		SPRING SEPARATE	1	1	1	1
⊙	40	2C921290		SPRING LINK	1	1	1	1
⊙	41	302C921302		BRACKET EXIT	1	1	1	1
⊙	42	2C921310		PLATE EARTH EXIT B	1	1	1	1
⊙	43	2C921330	2C921302	SPRING ACTUATOR INNER	1	1	1	1
⊙	44	2C921340		BELT EXIT	1	1	1	1
⊙	45	2C921350		PULLEY EXIT	2	2	2	2
⊙	46	2C921360		PULLEY EJECT	4	4	4	4
⊙	47	2C921370		STOPPER SE	1	1	1	1
⊙	48	2BC06980		STOPPER 5	3	3	3	3
⊙	49	2BL21260		SPRING ACTUATOR L	1	1	1	1
⊙	50	5MVX111DN007		STOPPER 3	2	2	2	2

SP	Ref. No.	Part.No.	Alternative.	Description	Quantity			
					110	120	230	240
⊙	51	3CY07080	2C904531 2C904520	BUSHING 6	4	4	4	4
⊙	52	34821210		STATIC ELIMINATOR B,EJECT	1	1	1	1
⊙	53	2C927530		WIRE EJECT	1	1	1	1
⊙	54	2C904440		SPRING LEFT COVER	1	1	1	1
⊙	55	302C904531		PIN FRONT STRAP B	1	1	1	1
⊙	56	302C904520		PLATE FRONT STRAP B	1	1	1	1
⊙	57	2C905170		LABEL BYPASS TABLE	1	1	1	1
⊙	58	2C921380		SPRING PULLEY EJECT	2	2	2	2
⊙	59	2C905270		LABEL BYPASS JAM	1	1	1	1
⊙	60	302DA05050		LABEL BYPASS	1	1	1	1
⊙	61	302DA21021		SHEET EJECT RIGHT	1	1	1	1
⊙	62	302DA21031		SHEET EJECT LEFT	1	1	1	1
⊙	63	302DA21010		SPRING LEVER	1	1	1	1
⊙	101	5MBTPB3006TW++R	B1A53060	BIND T.T SCREW(+) / M3 X 6 CRFREE S-T				
⊙	102	5MBTPB3008PW++R	B1A63080	BIND T.T SCREW(+) / M3 X 8 CRFREE P-T				
⊙	103	5MBTPB4010PW++R	B1A64100	BIND T.T SCREW(+) / M4 X 10 CRFREE P-T				
⊙	104	BAA64100		+TP TAP-TITE P SCREW M4X10				

- Parts with "•" are component parts or sub-assemblies of the assembly appearing immediately above them.
- Parts with "⊙" indicates the spare parts.

- Parts with "••" are component parts or sub-assembly with "•" appearing immediately above them.

FIG. 8 Scanner

2HA/2HB

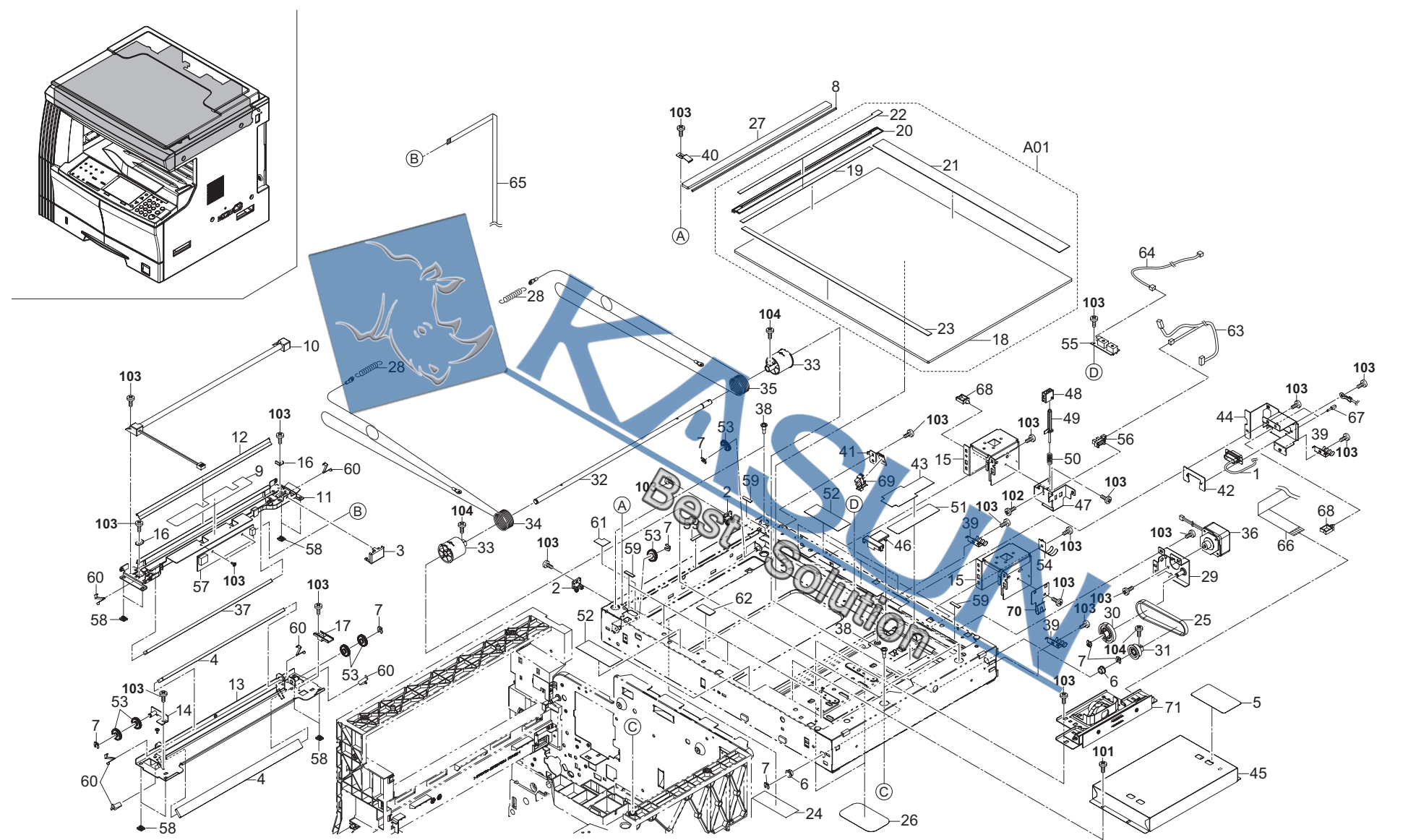


FIG. 8 Scanner

2HA/2HB

SP	Ref. No.	Part.No.	Alternative.	Description	Quantity			
					110	120	230	240
⊙	1	2C927540	2C912121 2C912131	WIRE DP	1	1	1	1
	2	18512340		GUIDE,SCANNER WIRE	2	2	2	2
	3	2AV12080		GUIDE FFC1	1	1	1	1
	4	2AV12160		MIRROR B	2	2	2	2
	5	2C905160		LABEL GLASS CAUTION	1	1	1	1
	6	2BC06510		BUSHING 8	2	2	2	2
	7	2BC06980		STOPPER 5	7	7	7	7
	8	2C912700		SPONGE ORIGINAL SIZE	1	1	1	1
	9	2C912180		FILM FRAME A	1	1	1	1
	10	2C912090		LAMP SCANNER YG	1	1	1	1
	11	2C912100		MIRROR FRAME A	1	1	1	1
	12	2C912110		REFLECTOR SCANNER	1	1	1	1
	13	302C912121		MIRROR FRAME B	1	1	1	1
	14	302C912131		ADJUST NG PLATE B	1	1	1	1
	15	2C912141	2DA12070	MOUNT BASE OF LENS LEFT	2	2	2	2
	16	2C912150		RETAINER WIRE	2	2	2	2
	17	2C912160		GUIDE FFC B	1	1	1	1
	A01	2C993170		PARTS,CONTACT GLASS,M(SP)	1	1	1	1
	A01	2C993180		PARTS,CONTACT GLASS,I(SP)	1	1	1	1
	18	*2C912250		CONTACT GLASS	1	1	1	1
	19	*2C912190		STANDARD PLATE SHADING	1	1	1	1
	20	*2C912200		LEFT SIZE INDICATOR	1	1	1	1
	21	*2C912210		REAR SIZE INDICATOR(M)	1	1	1	1
	21	*2C912460		REAR SIZE INDICATOR(I)	1	1	1	1
	22	*2C912440		LABEL SIZE (METRIC)	1	1	1	1
	22	*2C912450		LABEL SIZE (INCH)	1	1	1	1
	23	*2C912600		FRONT SIZE INDICATOR	1	1	1	1
	24	302DA12070		SEAL SCANNER	1	1	1	1
	25	2C912260	2C912291 2C912301	BELT SCANNER	1	1	1	1
	26	2C912270		LOWER SEAL SCANNER	2	2	2	2
	27	2C912280		CONTACT GLASS ADF	1	1	1	1
	28	302C912291		SPRING SCANNER TENSION	2	2	2	2
	29	302C912301	2C912331	MOTOR PLATE SCANNER	1	1	1	1
	30	2C912310		GEAR Z18/39	1	1	1	1
	31	2C912320		GEAR Z36	1	1	1	1
	32	302C912331		SHAFT MOTOR DRIVE	1	1	1	1
	33	2C912340	2C912761	DRUM PULLEY	2	2	2	2
	34	2C912350		FRONT WIRE SCANNER	1	1	1	1
	35	2C912360		REAR WIRE SCANNER	1	1	1	1
	36	2C912380		MOTOR SCANNER	1	1	1	1
	37	2C912390		MIRROR A	1	1	1	1
	38	302C912761		PIN SCANNER	4	4	4	4
	39	2C912410		GROUND PLATE SCANNER	3	3	3	3
	40	2C912420		HOLDER GLASS DF	1	1	1	1
	41	2C912220		MOUNT PI	1	1	1	1
	42	2C912470		PLATE DSUB	1	1	1	1
	43	2C912480		HOLDER CCD WIRE	1	1	1	1
	44	2C912490		MOUNT DSUB	1	1	1	1
	45	2C912580		COVER ISU	1	1	1	1
	46	2C912230		HOLDER FFC A	1	1	1	1
⊙	47	2C912610	2C928041	MOUNT RELEASE SWITCH	1	1	1	1
	48	2C912620		GUIDE RELEASE SWITCH	1	1	1	1
	49	2C912640		SHAFT RELEASE SWITCH	1	1	1	1
	50	2C912650		SPRING RELEASE SWITCH	1	1	1	1
	51	2C912660		GUIDE CCD WIRE	1	1	1	1
	52	2C912670		SHIELD SCANNER FRAME	4	4	4	4
	53	2C912680		PULLEY SCANNER	6	6	6	6
	54	2C912690		GROUND PLATE SCANNER B	1	1	1	1
	55	2C927090		SENSOR ORIGINAL	1	1	1	1
	56	2C927210		SENSOR 248NL1	1	1	1	1
	57	302C928041		PCB LAMP INVERTER	1	1	1	1
	58	2DC12230		SLIDER SCANNER	8	8	8	8
	59	29812291		CUSHION,CONTACT GLASS	9	9	9	9
	60	2BC12190		SPRING,MIRROR HOLDER	6	6	6	6
	61	2C912710	49513901 2DC27180	SHIELD SCANNER FRAME B	1	1	1	1
	62	2C912720		SHIELD BASE	1	1	1	1
	63	2C927550		WIRE SCANNER PI	1	1	1	1
	64	2C927560		WIRE ORIGINAL SIZE	1	1	1	1
	65	2C927580		FFC INVERTER	1	1	1	1
	66	2C927630		FFC CCD	1	1	1	1
	67	M0208010		SPACER,SFS-2.6S-B1WM(JST)	2	2	2	2
	68	M2109000		WIRE SADDLE,WS-1NS	2	2	2	2
	69	5FNXGP1A73A++02		PT.SENSOR GP1A73AJ00	1	1	1	1
	70	2C912730		SHIELD WIRE PANEL	1	1	1	1
	71	302C993250		PARTS,ISU,SP	1	1	1	1
	101	B1A63040	B1A63080 B1A53060	+BIND SCREW M3X04(TRIVALENT CHROM				
	102	5MBTFB0013RW++R		BIND T.T SCREW(+) / M3 X 8 CRFREE P-T				
	103	5MBTFB0010RW++R		BIND T.T SCREW(+) / M3 X 6 CRFREE S-T				
	104	B0A23080		+ROUND HEAD SCREW WITH SW.W M3X8				

- Parts with "*" are component parts or sub-assemblies of the assembly appearing immediately above them.
- Parts with "⊙" indicates the spare parts.

- Parts with "•" are component parts or sub-assembly with "•" appearing immediately above them.

FIG. 9 Imaging Unit

2HA/2HB

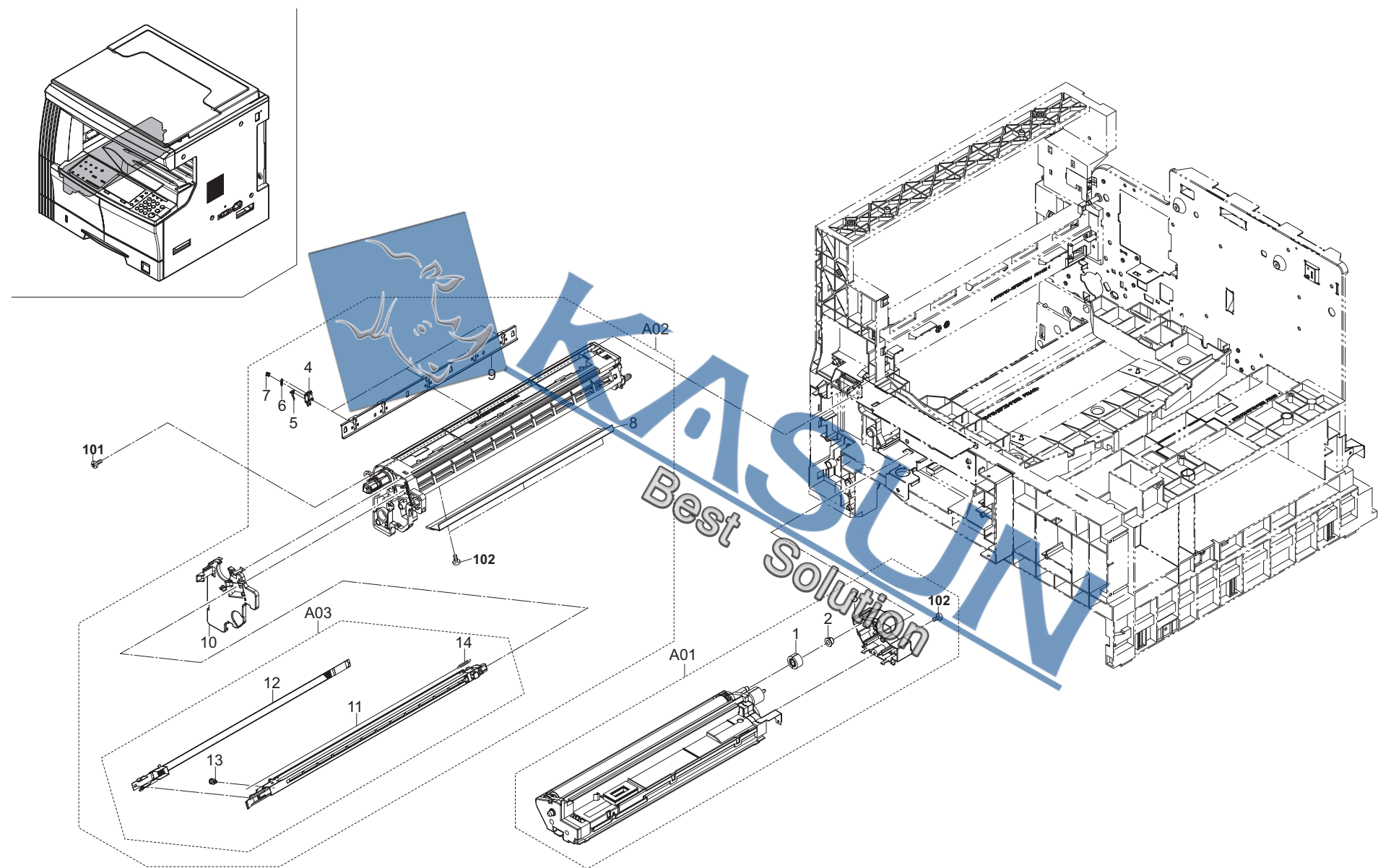


FIG. 9 Imaging Unit

2HA/2HB

SP	Ref. No.	Part.No.	Alternative.	Description	Quantity			
					110	120	230	240
⊙	A01	302C993031	2C993031	PARTS,DV-410,SP	1	1	1	1
	1	*2C914280		GEAR Z20H B	1	1	1	1
⊙	2	*5MVM176NN001	2BZ22230	BUSH GEAR Z26H 49515M0001A4	1	1	1	1
	3	*2C914080		REAR COVER DLP	1	1	1	1
	A02	2C982010		SET MK-410(OPTION)	1	1	1	1
	4	*2C918340		HOLDER CLAW	3	3	3	3
	5	*2C918370		CLAW SEPARATION	3	3	3	3
	6	*2AR18280		SPRING,CLAW SEPARATION	3	3	3	3
	7	*2A118370		PULLEY,DRUM SEPARATION	3	3	3	3
	8	*2C918010		BLADE CLEANING	1	1	1	1
	9	*2C918040		LOWER CLAW CLEANING	1	1	1	1
	10	*2C918050		FRONT COVER CLEANING	1	1	1	1
⊙	A03	*2C993020		PARTS,MC-410,SP	1	1	1	1
⊙	11	**302C968290	2C968290	CORONA WIRE MCH SP	1	1	1	1
	12	**2C910040		GRID	1	1	1	1
	13	**5MVT263NN001	33910230	PIN CHARGER	1	1	1	1
	14	**5MMW141LX002	2BZ02300	SPRING WIRE	1	1	1	1

SP	Ref. No.	Part.No.	Alternative.	Description	Quantity			
					110	120	230	240
	101	BAB54100		+TP TAP-TITE S SCREW M4X10				
	102	5MBTPB3008PW++R	B1A63080	BIND T.T SCREW(+) / M3 X 8 CRFREE P-T				

- Parts with "*" are component parts or sub-assemblies of the assembly appearing immediately above them.
- Parts with "⊙" indicates the spare parts.

- Parts with "••" are component parts or sub-assembly with "•" appearing immediately above them.

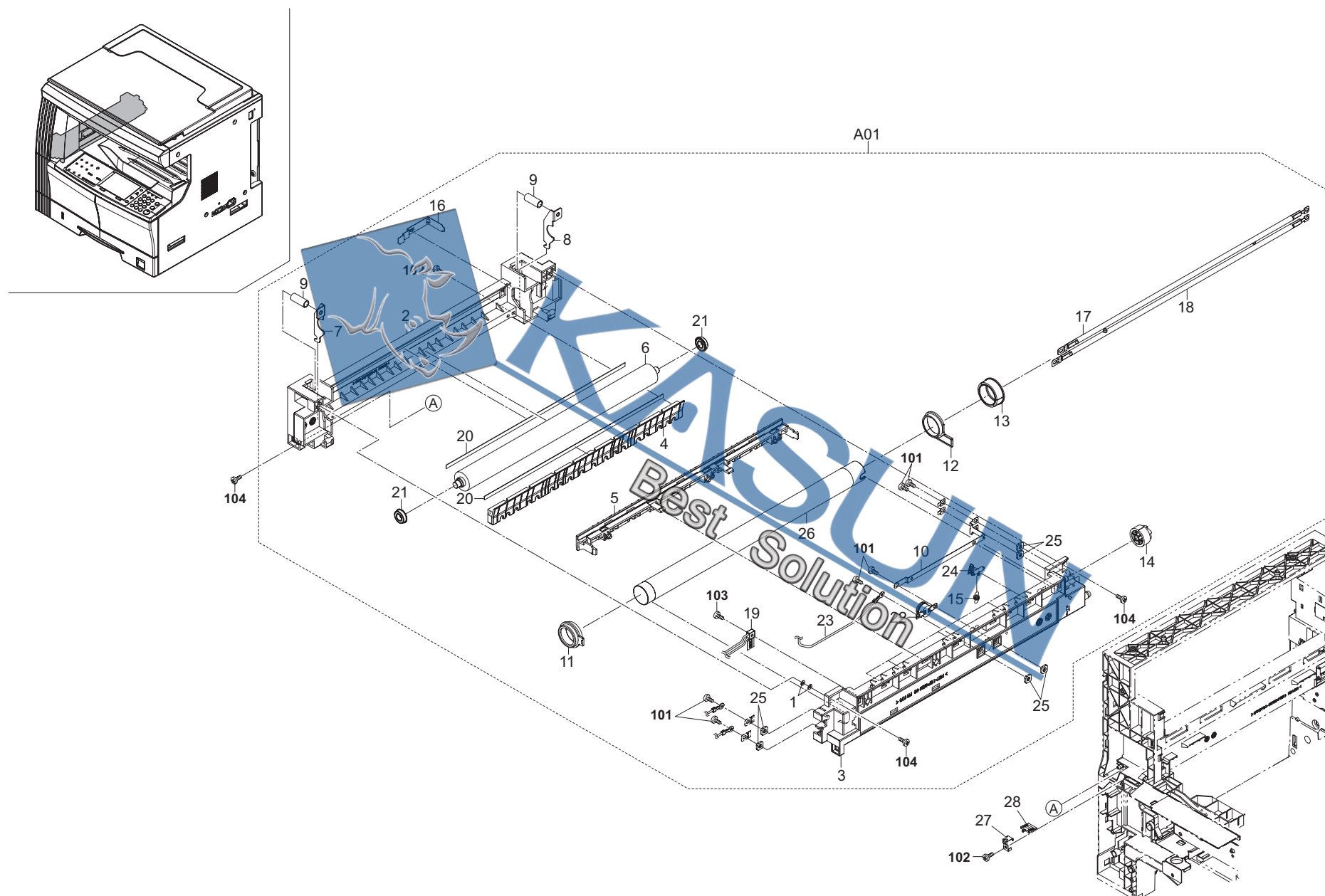


FIG. 10 Fuser Unit

2HA/2HB

SP	Ref. No.	Part.No.	Alternative.	Description	Quantity			
					110	120	230	240
⊙	A01	302C993052	2C993052	PARTS,FK-410(A),SP		1		
⊙	A01	302C993062	2C993062	PARTS,FK-410(E),SP			1	1
⊙	A01	302C993270	2C993270	PARTS,FK-410(TW),SP	1			
⊙	1	*302C907660	2C907660	SPACER RIGHT GUIDE	2	2	2	2
	2	*302C920021	2C920021	LEFT FRAME FUSER	1	1	1	1
	3	*302C920011	2C920011	RIGHT FRAME FUSER	1	1	1	1
	4	*2C920040		FRONT GUIDE FUSER	1	1	1	1
	5	*2C920030		REAR GUIDE FUSER	1	1	1	1
⊙	6	*302C920061	2C920061	ROLLER PRESS	1	1	1	1
	7	*2C920110		FRONT PRESSING PLATE	1	1	1	1
	8	*2C920120		REAR PRESSING PLATE	1	1	1	1
	9	*2C920130		SPRING PRESSURE	2	2	2	2
	10	*302C920141	2C920141	PLATE HEATER FUSER	1	1	1	1
⊙	11	*2C920150		FRONT FUSH HEAT ROLLER	1	1	1	1
⊙	12	*2C920160		REAR FUSH HEAT ROLLER	1	1	1	1
⊙	13	*2C920170		GEAR Z28 HEAT ROLLER	1	1	1	1
⊙	14	*2C920180		GEAR FUSER Z28	1	1	1	1
⊙	15	*2C920190		SPRING SEPARATOR	5	5	5	5
	16	*2C920200		GROUND PLATE PRESS	1	1	1	1
⊙	17	*2C920230		HEATER M120 FUSER		1		
⊙	17	*2C920250		HEATER M230 FUSER			1	1
⊙	17	*2C920410		HEATER M110 FUSER	1			
⊙	18	*2C920240		HEATER S120 FUSER		1		
⊙	18	*2C920260		HEATER S230 FUSER			1	
⊙	18	*2C920420		HEATER S110 FUSER	1			
⊙	19	*2C920310		THERMISTOR FUSER	1	1		
⊙	20	*2C920320		SEAL DISCHAGER	2	2	2	
⊙	21	*2C920330		BEARING PRESSURE	2	2	2	2
⊙	22	*2C920340		THERMOCUT 180 FUSER	1	1	1	1
	23	*2C927690		WIRE FUSER UNIT	1	1	1	1
⊙	24	*302FT20120	2FT20120	SEPARATOR ASSY	5	5	5	5
	25	*5MMS111SL002	2BY20050	NUT FUSER A	6	6	6	6
⊙	26	*302C920051	2C920051	ROLLER HEAT	1	1	1	1
⊙	27	302DA20020	2DA20020	STOPPER FUSER SPACER	1	1	1	1
⊙	28	302DA20010	2DA20010	SPACER FUSER UNIT	1	1	1	1

SP	Ref. No.	Part.No.	Alternative.	Description	Quantity			
					110	120	230	240
	101	5MBSP43006NW++R	B4A03060	TP HEAD SCREW(+)				
	102	5MBTPB3008PW++R	B1A63080	BIND T.T SCREW(+)				
	103	5MBTPB3012PW++R	B1A63120	BIND T.T SCREW(+)				
	104	5MBTPB4010PW++R	B1A64100	BIND T.T SCREW(+)				

- Parts with "*" are component parts or sub-assemblies of the assembly appearing immediately above them.
- Parts with "⊙" indicates the spare parts.

- Parts with "•" are component parts or sub-assembly with "•" appearing immediately above them.

FIG. 11 Driving & Cooling

2HA/2HB

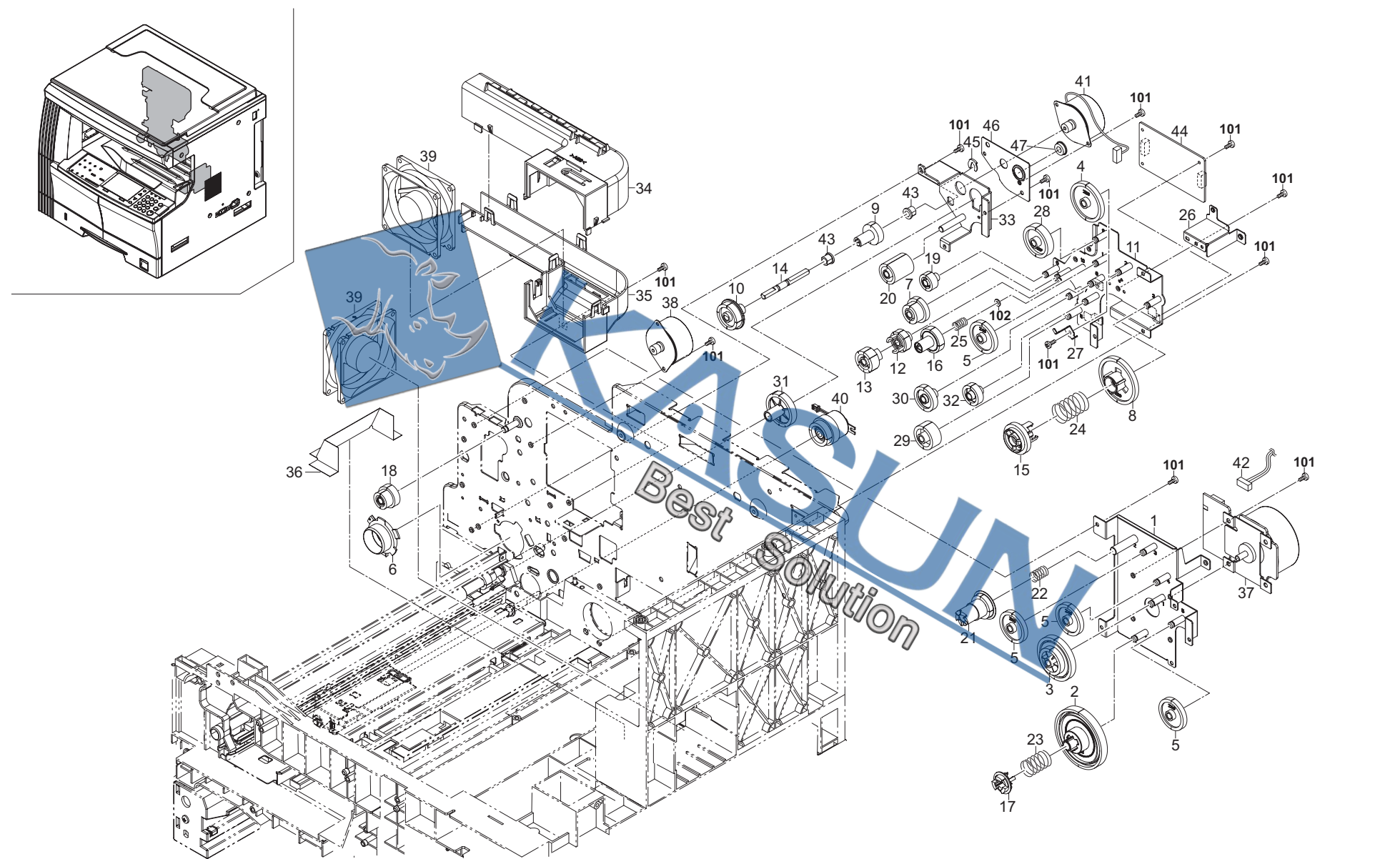


FIG. 11 Driving & Cooling

2HA/2HB

SP	Ref. No.	Part.No.	Alternative.	Description	Quantity			
					110	120	230	240
⊙	1	302C922011	2C922011	MOUNT DRIVE UNIT	1	1	1	1
⊙	2	2C922020		GEAR 122	1	1	1	1
⊙	3	2C922030		GEAR 88/34	1	1	1	1
⊙	4	2C922040		GEAR 50	1	1	1	1
⊙	5	2C922050		GEAR 40	4	4	4	4
⊙	6	2C922060		POSITIONING BUSH DRUM	1	1	1	1
⊙	7	2C922070		GEAR 30/23	1	1	1	1
⊙	8	2C922080		GEAR 60	1	1	1	1
⊙	9	2C922100		GEAR 25 DPX	1	1	1	1
⊙	10	2C922110		GEAR 32 DPX	1	1	1	1
⊙	11	302C922131	2C922131	MOUNT CONT DRIVE	1	1	1	1
⊙	12	2C922140		GEAR 25 DEV	1	1	1	1
⊙	13	2C922150		GEAR 26 DEV	1	1	1	1
⊙	14	302C922161	2C922161	SHAFT DPX DRIVE	1	1	1	1
⊙	15	2C922170		COUPLING CONT S	1	1	1	1
⊙	16	2C922180		COUPLING CONT S	1	1	1	1
⊙	17	2C922190		COUPLING DRUM	1	1	1	1
⊙	18	2C922200		GEAR 43/20	1	1	1	1
⊙	19	2C922210		GEAR 20	1	1	1	1
⊙	20	2C922220		GEAR 25	1	1	1	1
⊙	21	2C922230		GEAR 29 FIX JOINT	1	1	1	1
⊙	22	2C922240		SPRING FIX JOINT	1	1	1	1
⊙	23	2C922250		SPRING DRUM COUPLING	1	1	1	1
⊙	24	2C922260		SPRING CONT P	1	1	1	1
⊙	25	2C922270		SPRING CONT S	1	1	1	1
⊙	26	2C922280		MOUNT HV PCB	1	1	1	1
⊙	27	2C922290		HOLDER GEAR	1	1	1	1
⊙	28	2C922300		GEAR 40 FIXJOINT	1	1	1	1
⊙	29	2C922330		GEAR 30 PF	1	1	1	1
⊙	30	2C922340		GEAR 31	1	1	1	1
⊙	31	302HB31020	2HB31020	GEAR 68 REG	1	1	1	1
⊙	32	2C922360		GEAR 25 PF	1	1	1	1
⊙	33	302HB31010	2HB31010	MOUNT REG MOTOR	1	1	1	1
⊙	34	2C923010		UPPER DUCT	1	1	1	1
⊙	35	2C923020		LOWER DUCT	1	1	1	1
⊙	36	2C923030		FILM COOLING	1	1	1	1
⊙	37	2C927010		MOTOR MAIN	1	1	1	1
⊙	38	2C927020		MOTOR EJECT	1	1	1	1
⊙	39	2C927070		FAN COOLING 80-25	2	2	2	2
⊙	40	2C927190		CLUTCH FEED	1	1	1	1
⊙	41	2C927220		MOTOR REGISTRATION	1	1	1	1
⊙	42	2C927760		WIRE MAIN MOTOR	1	1	1	1
⊙	43	3CY07080		BUSHING 6	2	2	2	2
⊙	44	302C901192	2C901192	PCB REGISTRATION ASSY	1	1	1	1
⊙	45	5MVX111DN003	2A806250	RING STOPPER	1	1	1	1
⊙	46	302HB31030	2HB31030	PLATE REG MOTOR	1	1	1	1
⊙	47	34922480		BEARING,REGISTRATION FULCRUM	1	1	1	1

SP	Ref. No.	Part.No.	Alternative.	Description	Quantity			
					110	120	230	240
101	102	5MBTPB3006TW++R C2893140	B1A53060	BIND T.T SCREW(+) / M3 X 6 CRFREE S-T SHIM 6.2X14X0.25T				

- Parts with "•" are component parts or sub-assemblies of the assembly appearing immediately above them.
- Parts with "⊙" indicates the spare parts.

- Parts with "••" are component parts or sub-assembly with "•" appearing immediately above them.

FIG. 12 Electrical Components

2HA/2HB

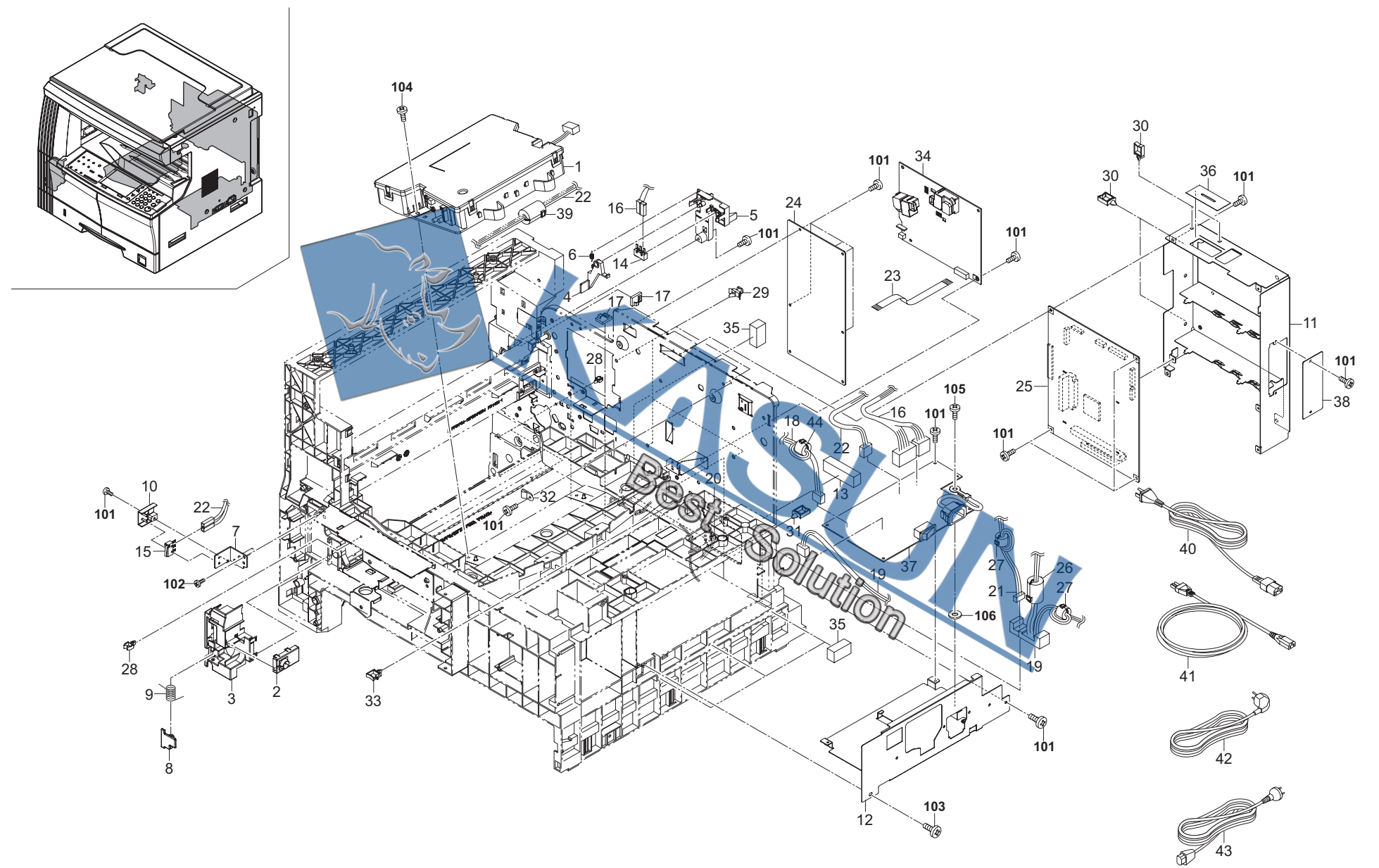


FIG. 12 Electrical Components

2HA/2HB

SP	Ref. No.	Part.No.	Alternative.	Description	Quantity			
					110	120	230	240
⊙	1	302C993092	2C993092	PARTS,LSU ASS'Y,SP	1	1	1	1
⊙	2	2C901170		DISPOSAL SENSOR ASSY	1	1	1	1
	3	2C918400		HOLDER SENSOR B	1	1	1	1
	4	2C904300		ARM INTERLOCK SW	1	1	1	1
	5	2C904310		MOUNT INTERLOCK SW	1	1	1	1
	6	2C904340		SPRING LEFT INTERLOCK	1	1	1	1
	7	302C916151	2C916151	PIN CONVEYING HOOK	1	1	1	1
	8	2C918350		DETECTION PLATE	1	1	1	1
	9	2C918360		SPRING DETECTION	1	1	1	1
	10	2C926070		HOLDER INTERLOCK SW	1	1	1	1
	11	302HB39010	2HB39010	SHIELD MAIN	1	1	1	1
	12	2C926510		MOUNT POWER SOURCE	1	1	1	1
	13	2C927250		GASKET SHIELD 15X10X45	1	1	1	1
⊙	14	2C927170		SWITCH INTERLOCK L	1	1	1	1
⊙	15	2C927180		SWITCH INTERLOCK F	1	1	1	1
	16	2C927510		WIRE ENGINE	1	1	1	1
	17	M2105910		CLAMP,C/M-07(KITAGAWA)	3	3	3	3
	18	2C927600		WIRE FUSE	1	1	1	1
	19	2C927610		WIRE DESK POWER	1	1	1	1
	20	M2107240		BAND,KI-100(KITAGAWA)	1	1	1	1
	21	2C927660		WIRE DESK	1	1	1	1
	22	2C927680		WIRE FRONT SW	1	1	1	1
⊙	23	2C927740		FFC HVU	1	1	1	1
⊙	24	302HB94010	2HB94010	PARTS,PWB ENGINE ASS'Y,SP (16ppm)	1	1	1	1
⊙	24	302HA94010	2HA94010	PARTS,PWB ENGINE ASS'Y,SP (20ppm)	1	1	1	1
⊙	25	302HB94020	2HB94020	PARTS,PWB MAIN ASS'Y,SP	1	1	1	1
	26	2C927230		CORE SFT-72SNB-026K	1	1	1	1
	27	2A627940		CORE 10-20X10	2	2	2	2
	28	M2105740		MINIATURE CLAMP,UAMS-05S-2	4	4	4	4
	29	M2108130		SPACER,KGPS-4S	4	4	4	4
	30	M2109000	49513901	WIRE SADDLE,WS-1NS	4	4	4	4
	31	M2109020	49829401	WIRE SADDLE,WS-2WS	1	1	1	1
	32	M7005030		CLAMP,EMT-5N(TAKEUCHI)	1	1	1	1
	33	M70A5020		CLAMP,FCC-125EM513(TAKEUCHI)	1	1	1	1
⊙	34	302C928052	2C928052	PCB HIGH VOLTAGE	1	1	1	1
	35	2BL14480		SEAL WIRE	5	5	5	5
	36	302DA26560	2DA26560	FILM SHIELD FFC	1	1	1	1
⊙	37	2C928080		PCB LVU 100	1	1		
⊙	37	2C928090		PCB LVU 200			1	1
	38	302HB39020	2HB39020	LID PRINTER	1	1	1	1
	39	2AV27440		CORE 15-26X13	1	1	1	1
	40	3065027601	65027601	POWER CORD 110	1			
	41	302DA27050	2DA27050	AC CORD 120 ASSY		1		
	42	302DA27060	2DA27060	AC CORD 230 ASSY			1	
	43	3029927232	29927232	POWER CODE AS(240) (16ppm)				1
	44	2A627930		CORE 11-25X14			1	1

SP	Ref. No.	Part.No.	Alternative.	Description	Quantity			
					110	120	230	240
	101	5MBTPB3006TW++R	B1A53060	BIND T.T SCREW(+) / M3 X 6 CRFREE S-T				
	102	5MBTPB3008PW++R	B1A63080	BIND T.T SCREW(+) / M3 X 8 CRFREE P-T				
	103	5MBTPB4010PW++R	B1A64100	BIND T.T SCREW(+) / M4 X 10 CRFREE P-T				
	104	B1A64120		+BIND TAP-TITE P SCREW M4X12				
	105	B9B04080		+GROUNDING SCREW M4X8				
	106	5MBWG40854SZ	C4204000	OT LOCK WASHER / M4X8.5X0.4T S-ZMC				

• Parts with "•" are component parts or sub-assemblies of the assembly appearing immediately above them.

• Parts with "⊙" indicates the spare parts.

• Parts with "••" are component parts or sub-assembly with "•" appearing immediately above them.

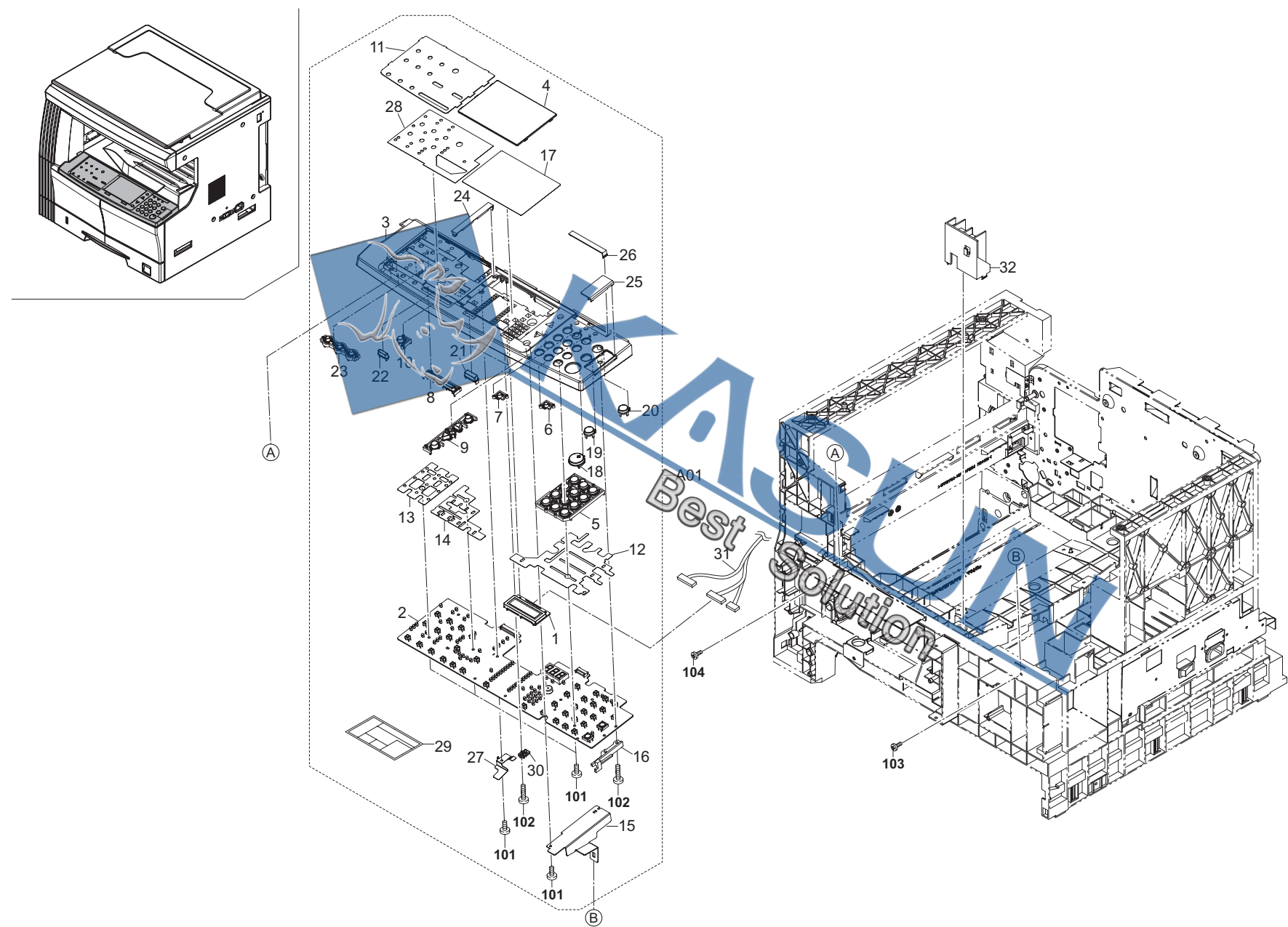


FIG. 13 Operation Unit

2HA/2HB

SP	Ref. No.	Part.No.	Alternative.	Description	Quantity			
					110	120	230	240
⊙	A01	302HB93020	2HB93020	PARTS,KEY BOARD ASS'Y E			1	1
⊙	A01	302HB93030	2HB93030	PARTS,KEY BOARD ASS'Y I		1		
⊙	A01	302HB93050	2HB93050	PARTS,KEY BOARD ASS'Y(TW)	1			
⊙	1	*302HB93040	2HB93040	PARTS LCD OPERATION		1	1	1
⊙	1	*302HF93040	2HF93040	PARTS LCD OPERATION	1			
⊙	2	*302HB94030	2HB94030	PARTS,PWB OPERATION ASS'Y,SP	1	1	1	1
⊙	3	*302HB05010	2HB05010	COVER OPERATION	1	1	1	1
⊙	4	*302HB05090	2HB05090	CENTER OPE COVER	1	1	1	1
⊙	5	*2DA25350		KEY OPERATION 10	1	1	1	1
⊙	6	*302HB05030	2HB05030	KEY SAVER	2	2	2	2
⊙	7	*302HB05020	2HB05020	KEY MANAGE	1	1	1	1
⊙	8	*302HB05070	2HB05070	KEY EXPOSURE	1	1	1	1
⊙	9	*302HB05040	2HB05040	KEY ZOOM	1	1	1	1
⊙	10	*302HB05210	2HB05210	KEY ON LINE	1	1	1	1
⊙	11	*302HB05140	2HB05140	LEFT OPE SHEET	1	1	1	1
⊙	12	*302HB05150	2HB05150	RIGHT DUST SHIELD	1	1	1	1
⊙	13	*302HB05170	2HB05170	LEFT DUST SHIELD	1	1	1	1
⊙	14	*302HB05160	2HB05160	CENTER DUST SHIELD	1	1	1	1
⊙	15	*302HB05220	2HB05220	MOUNT OPERATION R	1	1	1	1
⊙	16	*2C925210		SPACER OPE PCB	1	1	1	1
⊙	17	*302HB05130	2HB05130	CENTER OPE SHEET E			1	1
⊙	17	*302HB05300	2HB05300	CENTER OPE SHEET I				
⊙	17	*302HB05310	2HB05310	CENTER OPE SHEET(JP)	1			
⊙	18	*2DC25052		KEY PRINT	1	1		1
⊙	19	*2DC25060		KEY STOP	1	1		1
⊙	20	*2DC25070		KEY RESET	1	1		1
⊙	21	*302HB05050	2HB05050	KEY SELECT	2	2	2	2
⊙	22	*302HB05060	2HB05060	KEY PHOTO	2	2	2	2
⊙	23	*302HB05080	2HB05080	KEY FUNCTION	3	3	3	3
⊙	24	*302HB05100	2HB05100	LID CENTER COVER	1	1	1	1
⊙	25	*302HB05110	2HB05110	LID PRINT	1	1	1	1
⊙	26	*302HB05120	2HB05120	LID SAVER	1	1	1	1
⊙	27	*302HB05180	2HB05180	GROUND PLATE LCD	1	1	1	1
⊙	28	*302HB05190	2HB05190	LEFT SHEET E		1	1	1
⊙	28	*302HB05440	2HB05440	LEFT SHEET(TW)	1			
⊙	29	*302HB05200	2HB05200	SHEET SET E		1	1	1
⊙	29	*302HB05450	2HB05450	SHEET SET(TW)	1			
⊙	30	*2DA25300		STOPPER LCD	1	1	1	1
⊙	31	302HB46010	2HB46010	WIRE PANEL	1	1	1	1
⊙	32	2C925180		RETAINER OPERATION	1	1	1	1

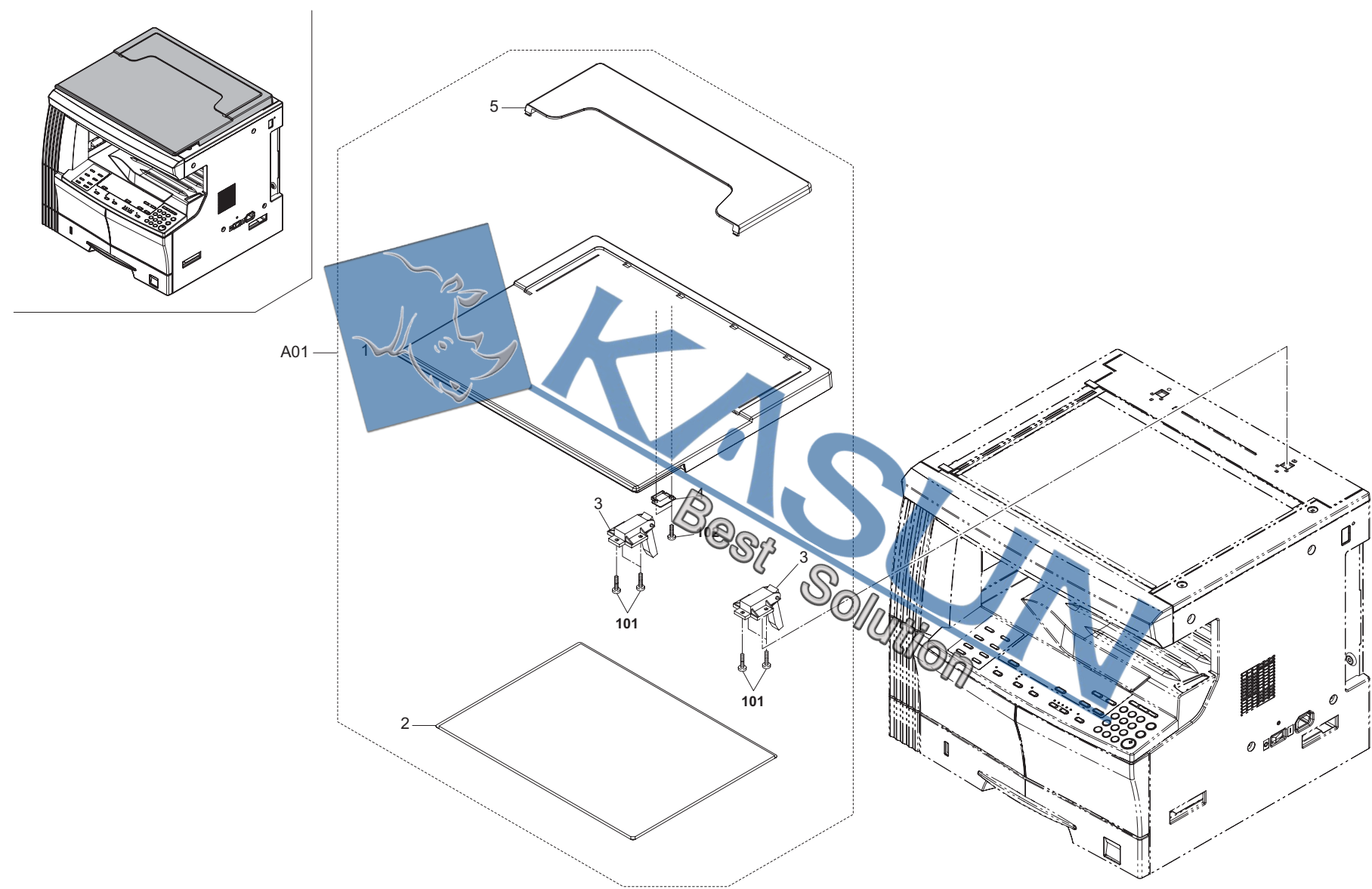
SP	Ref. No.	Part.No.	Alternative.	Description	Quantity			
					110	120	230	240
	101	5MBTPB3008PW++R	B1A63080	BIND T.T SCREW(+) / M3 X 8 CRFREE P-T				
	102	5MBTPB3012PW++R	B1A63120	BIND T.T SCREW(+) / M3 X 12 CRFREE P-T				
	103	5MBTPB4010PW++R	B1A64100	BIND T.T SCREW(+) / M4 X 10 CRFREE P-T				
	104	BAB54100		+TP TAP-TITE S SCREW M4X10				

- Parts with "*" are component parts or sub-assemblies of the assembly appearing immediately above them.
- Parts with "⊙" indicates the spare parts.

- Parts with ".•" are component parts or sub-assembly with ".•" appearing immediately above them.

FIG. 14 Original Holder

2HA/2HB



*120V, 230V : OPTION

FIG. 14 Original Holder

2HA/2HB

SP	Ref. No.	Part.No.	Alternative.	Description	Quantity			
					110	120	230	240
	A01	2CX82010		SET,PLATEN COVER TYPE D	1	1*	1*	1
	1	*2A612800		COVER,PLATEN	1	1*	1*	1
	2	*2A612810		MAT,ORIGINAL HOLDER	1	1*	1*	1
	3	*2A612820		HINGE,ORIGINAL HOLDER	2	2*	2*	2
	4	*2C912630		STOPPER RELEASE SWITCH	1	1*	1*	1
	5	*60904280		ORIGINAL POCKET	1	1*	1*	1

SP	Ref. No.	Part.No.	Alternative.	Description	Quantity			
					110	120	230	240
	101	5MBTPB4010PW++R	B1A64100	BIND T.T SCREW(+) / M4 X 10 CRFREE P-T				
	102	5MBTPB3012PW++R	B1A63120	BIND T.T SCREW(+) / M3 X 12 CRFREE P-T				

- Parts with "*" are component parts or sub-assemblies of the assembly appearing immediately above them.
- Parts with "☉" indicates the spare parts.

- Parts with "••" are component parts or sub-assembly with "•" appearing immediately above them.

FIG. 15 Option I (DU-410)

2HA/2HB

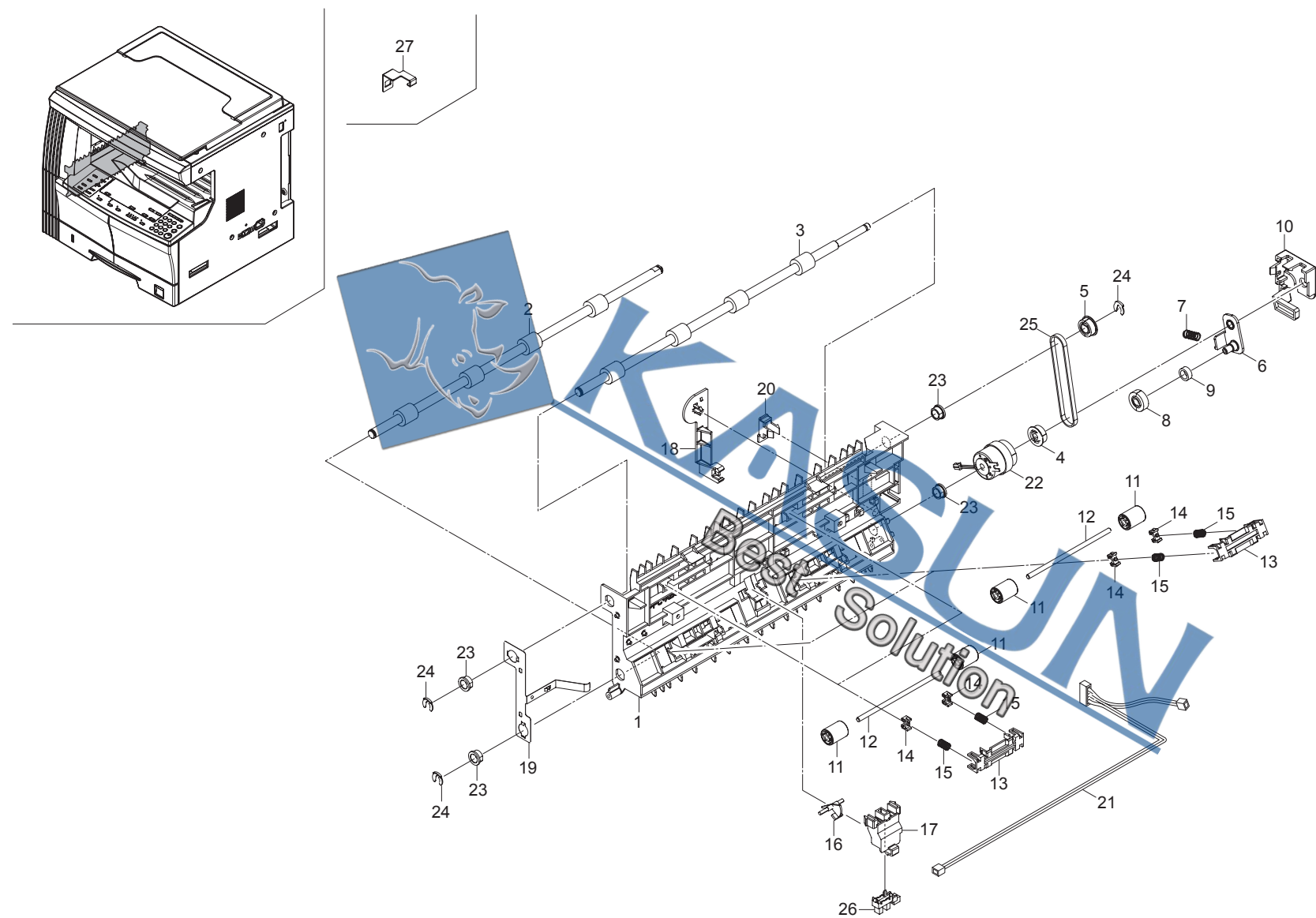


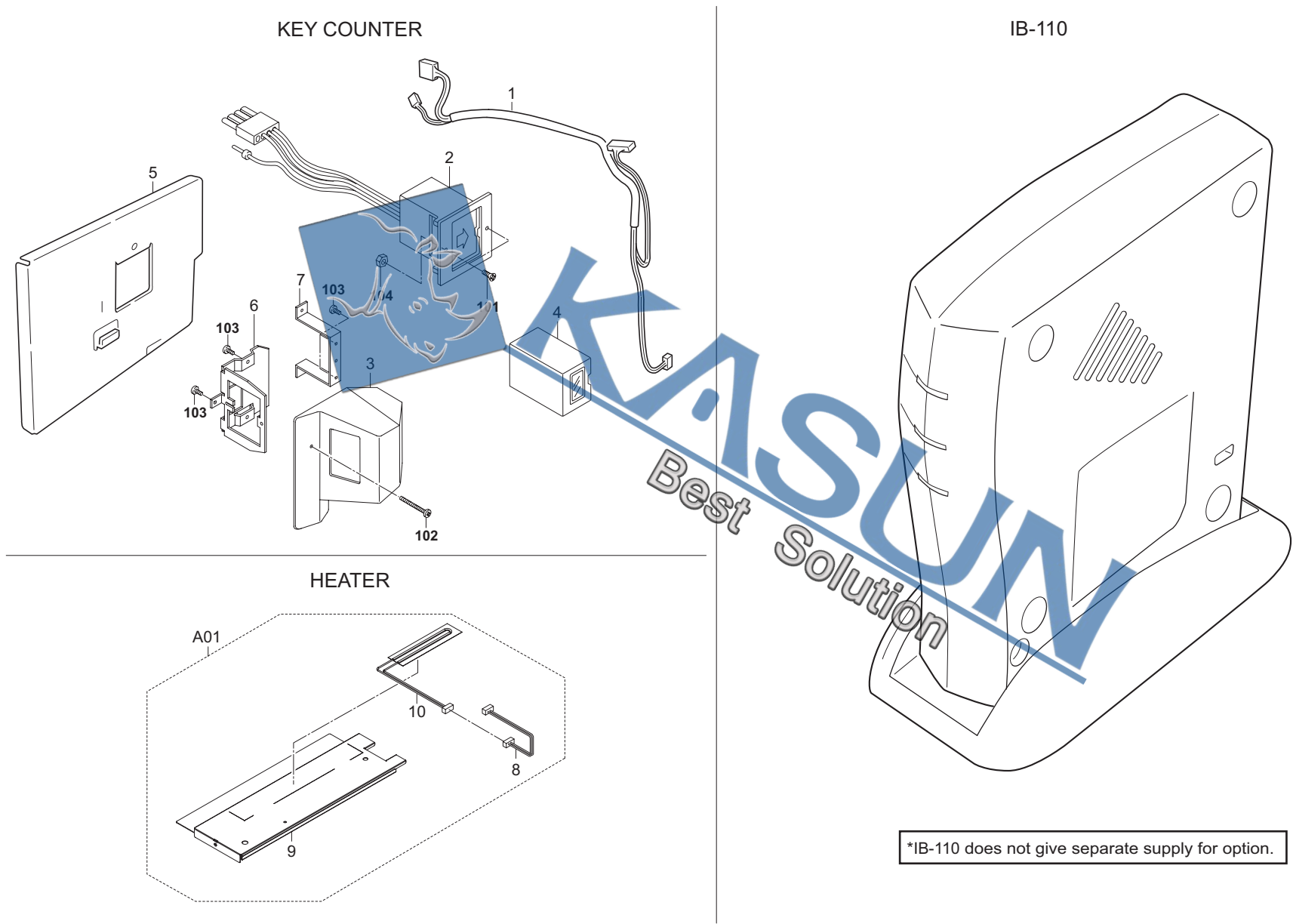
FIG. 15 Option I (DU-410)

2HA/2HB

SP	Ref. No.	Part.No.	Alternative.	Description	Quantity			
					110	120	230	240
	1	3HY07010		FRAME DUPLEX	1	1	1	1
⊙	2	303HY07021	3HY07021	ROLLER DUPLEX A	1	1	1	1
⊙	3	303HY07031	3HY07031	ROLLER DUPLEX B	1	1	1	1
⊙	4	3HY07040		PULLEY 26-6 DUPLEX	1	1	1	1
⊙	5	3HY07050		PULLEY 26-8 DUPLEX	1	1	1	1
	6	3HY07060		JUNCTION PLATE DUPLEX	1	1	1	1
	7	3HY07070		SPRING JUNCTION DUPLEX	1	1	1	1
⊙	8	3HY07090		GEAR 21 DUPLEX	1	1	1	1
⊙	9	3HY07100		PULLEY IDLE DUPLEX	1	1	1	1
	10	3HY07110		RETAINER DUPLEX	1	1	1	1
⊙	11	3HY07120		PULLEY 15 DUPLEX	8	8	8	8
	12	303HY07131	3HY07131	SHAFT 4 DUPLEX	4	4	4	4
	13	3HY07140		HOLDER DUPLEX SPRING	4	4	4	4
⊙	14	3HY07150		BUSHING DUPLEX ROLLER	8	8	8	8
⊙	15	3HY07160		SPRING DUPLEX PULLEY	8	8	8	8
⊙	16	3HY07170		ACTUATOR DUPLEX	1	1	1	1
	17	3HY07180		RETAINER ACTUATOR	1	1	1	1
	18	3HY07190		PROTECTING PLATE WIRE	1	1	1	1
	19	3HY07200		GROUND PLATE DUPLEX	1	1	1	1
	20	3HY07210		LID DUPLEX	1	1	1	1
⊙	21	3HY27010		WIRE DUPLEX	1	1	1	1
⊙	22	3HY27020		CLUTCH DU	1	1	1	1
⊙	23	2BC06510		BUSHING 8	4	4	4	4
⊙	24	2BC06910		STOPPER 6	3	3	3	3
⊙	25	2C921340		BELT EXIT	1	1	1	1
⊙	26	2C927210		SENSOR 248NL1	1	1	1	1
	27	3HY07220		PLATE LOCK DUPLEX	1	1	1	1

- Parts with "•" are component parts or sub-assemblies of the assembly appearing immediately above them.
- Parts with "⊙" indicates the spare parts.

- Parts with "••" are component parts or sub-assembly with "•" appearing immediately above them.



*IB-110 does not give separate supply for option.

FIG. 16 Option II

2HA/2HB

SP	Ref. No.	Part.No.	Alternative.	Description	Quantity			
					110	120	230	240
⊙	1	2C960110	29236241	WIRE KEY COUNTER	1	1	1	1
⊙	2	3029236241		SOCKET ASS'Y,KEY COUNTER	1	1	1	1
⊙	3	2A360010	25418011	COVER,KEY COUNTER	1	1	1	1
⊙	4	3025418011		KEY COUNTER	1	1	1	1
⊙	5	2C960100		MOUNT KEY COUNTER	1	1	1	1
⊙	6	66060030		RETAINER,KEY COUNTER	1	1	1	1
⊙	7	66060040		MOUNT,KEY COUNTER	1	1	1	1
⊙	A01	2C993190		PARTS,DEH.ASSY120,SP	1	1		
⊙	A01	2C993200		PARTS,DEH.ASSY240,SP			1	1
⊙	8	*2C927780		WIRE DEHUMIDIFIER	1	1	1	1
⊙	9	*2C907520		PLATE HEATER J	1	1	1	1
⊙	10	*2AV60100		HEATER,CASSETTE(120)	1	1		
⊙	10	*2AV60110		HEATER,CASSETTE(240)			1	1
*IB-110 does not give separate supply for option.								

SP	Ref. No.	Part.No.	Alternative.	Description	Quantity			
					110	120	230	240
	101	7BB003306H	BB040750	+COUNTER-SUNK HEAD SCREW M3X6 CR				
	102	B1B54400	BC018230	+BIND TAP-TITE S SCREW M4X40(TRIVALE				
	103	B4A04060		+TP-A SCREW M4X06(TRIVALENT CHROMA				
	104	7BC1003055++H01		HEXA NUT M3				

- Parts with "•" are component parts or sub-assemblies of the assembly appearing immediately above them.
- Parts with "⊙" indicates the spare parts.

- Parts with "••" are component parts or sub-assembly with "•" appearing immediately above them.

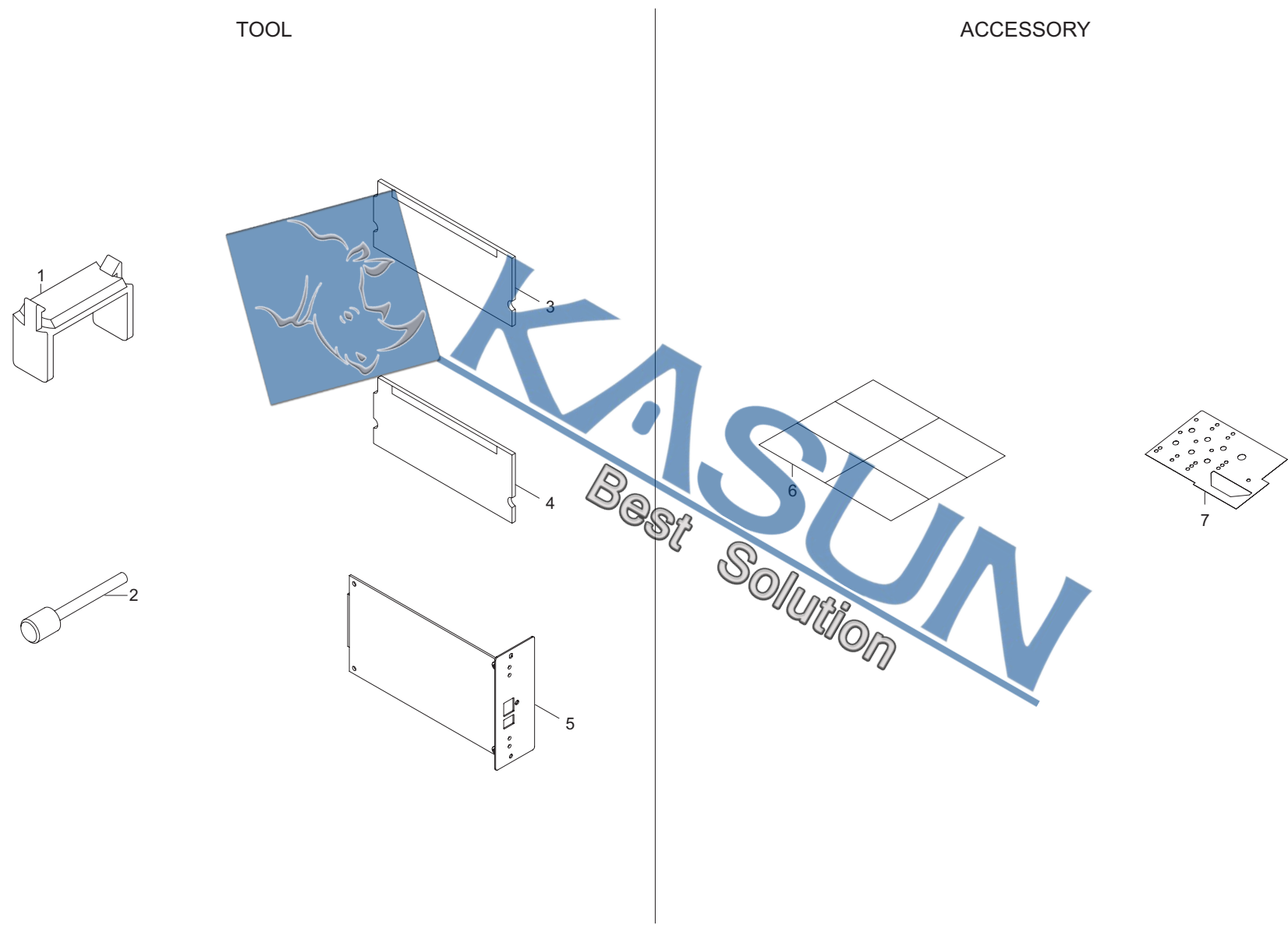


FIG. 17 Tools & Accessories

2HA/2HB

SP	Ref. No.	Part.No.	Alternative.	Description	Quantity			
					110	120	230	240
⊙	1	35968110		STOPPER WIRE ASS'Y SP	2	2	2	2
⊙	2	302C968310	2C968310	MIRROR FRAME RETAINING SP	2	2	2	2
⊙	3	302HB94040	2HB94040	PARTS,PWB DIMM ASS'Y ENGINE,SP (16ppm)	1	1	1	1
⊙	3	302HA94020	2HA94020	PARTS,PWB DIMM ASS'Y ENGINE,SP (20ppm)	1	1	1	
⊙	4	302HB94050	2HB94050	PARTS,PWB DIMM ASS'Y MAIN,SP	1	1	1	1
⊙	5	303KC94010	3KC94010	PARTS,PWB GDI ASS'Y,SP	1	1	1	1
⊙	6	302HB05460	2HB05460	SHEET SET EUR		1	1	1
⊙	7	302HB05330	2HB05330	LEFT SHEET(FR)		1	1	1
⊙	7	302HB05340	2HB05340	LEFT SHEET(DE)		1	1	1
⊙	7	302HB05350	2HB05350	LEFT SHEET(IT)		1	1	1
⊙	7	302HB05360	2HB05360	LEFT SHEET(ES)		1	1	1
⊙	7	302HB05370	2HB05370	LEFT SHEET(P2)		1	1	1
⊙	7	302HB05470	2HB05470	LEFT SHEET(PG)		1	1	1

- Parts with "•" are component parts or sub-assemblies of the assembly appearing immediately above them.
- Parts with "⊙" indicates the spare parts.

- Parts with "••" are component parts or sub-assembly with "•" appearing immediately above them.

INDEX

2HA/2HB

SP	Part.No.	Alternative.	Description	Fig.No.	SP	Part.No.	Alternative.	Description	Fig.No.
	18512340		GUIDE,SCANNER WIRE	8		2C902280		HOLDER PULLEY	2
	19507050		LEVER,CASSETTE BASE RELEASE	3		2C902520		COLLAR LEVER CONT.	2
⊙	29807100		GEAR 16,BYPASS	5	⊙	2C902540		LEVER LOCK CONT.	2
⊙	29812291		CUSHION,CONTACT GLASS	8		2C902590		SPRING DEV PUSH F	2
	2A118370		PULLEY,DRUM SEPARATION	2,9	⊙	2C904041		RIGHT COVER	1
⊙	2A360010		COVER,KEY COUNTER	16	⊙	2C904050		LEFT COVER	7
	2A612800		COVER,PLATEN	14	⊙	2C904060		LEFT LOW COVER	1
	2A612810		MAT,ORIGINAL HOLDER	14	⊙	2C904070		UPPER FRONT COVER	1
	2A612820		HINGE,ORIGINAL HOLDER	14	⊙	2C904080		FRONT SIDE COVER UP	1
	2A627930		CORE 11-25X14	12	⊙	2C904090		FRONT TOP COVER	1
	2A627940		CORE 10-20X10	12	⊙	2C904100		RIGHT TOP COVER	1
⊙	2AR07220		PULLEY,PAPER FEED	5	⊙	2C904110		LEFT TOP COVER	1
⊙	2AR07230		PULLEY,SEPARATION	5	⊙	2C904120		REAR TOP COVER	1
⊙	2AR07240		PULLEY,LEADING FEED	5	⊙	2C904130		FRONT SIDE COVER MID	1
	2AR18280		SPRING,CLAW SEPARATION	9	⊙	2C904140		FRONT SIDE COVER LOW	1
	2AV12080		GUIDE FFC1	8	⊙	2C904150		INNER REAR COVER	1
⊙	2AV12160		MIRROR B	8	⊙	2C904160		INNER LEFT COVER	1
	2AV27440		CORE 15-26X13	12	⊙	2C904170		REAR COVER	1
⊙	2AV60100		HEATER,CASSETTE(120)	16	⊙	2C904180		LEFT FRONT COVER	1
⊙	2AV60110		HEATER,CASSETTE(240)	16	⊙	2C904190		LEFT REAR COVER	1
	2AV73580		LABEL,TONER DISPOSAL TANK HK	1	⊙	2C904200		LEFT MIDDLE COVER	1
⊙	2BC06510		BUSHING 8	5,6,8,15		2C904210		STOPPER LEFT COVER F	7
⊙	2BC06910		STOPPER 6	4,5,6,15		2C904220		STOPPER LEFT COVER R	7
⊙	2BC06980		STOPPER 5	4,5,6,7,8		2C904231		STRAP LEFT COVER A	7
	2BC12190		SPRING,MIRROR HOLDER	8		2C904241		STRAP LEFT COVER B	7
⊙	2BL05070		LABEL SEP CLEANING	1		2C904260		HOOK LEFT COVER F	7
	2BL14480		SEAL WIRE	12		2C904270		HOOK LEFT COVER R	7
	2BL16220	5AAVBRUSH036	BRUSH CLEANER ASSY	1		2C904280		JUNCTION PLATE HOOK	7
⊙	2BL17030		COLLAR TRANS ROLLER	4		2C904290		PLATE FRONT COVER	1
	2BL21260		SPRING ACTUATOR L	7		2C904300		ARM INTERLOCK SW	12
⊙	2C901050		PCB MPF SIZE ASSY	6		2C904310		MOUNT INTERLOCK SW	12
⊙	2C901060		PCB EJECT SW ASSY	7		2C904340		SPRING LEFT INTERLOCK	12
⊙	2C901100		PCB CASSETTE ASSY	5		2C904350		SPRING LEFT HOOK	7
⊙	2C901170		DISPOSAL SENSOR ASSY	12		2C904360		STRAP LEFT COVER C	6
⊙	2C901180		CONT SENSOR ASSY	2		2C904390		PLATE LEFT SW	7
	2C902070		BASE RUBBER	2	⊙	2C904410		COVER DSUB	1
	2C902080		SPRING DEV PUSH	2		2C904430		PLATE LEFT HOOK	7
	2C902100		MOUNT REAR COVER	2		2C904440		SPRING LEFT COVER	7
	2C902110		MOUNT FRONT COVER	2	⊙	2C904470		FRONT LEFT COVER(K)	1
	2C902120		PANEL FRONT	2	⊙	2C904480		FILM FRONT COVER	1
	2C902130		MOUNT CONT PCB	2		2C904490		PLATE FRONT STRAP	6
	2C902140		HINGE FRONT COVER	1		2C904510		SPONGE COVER	1
	2C902160		RAIL DLP	2		2C904550		CUT WASHER 5	7
	2C902170		LEVER DEV PUSH	2		2C905071		LABEL CONT SET	2
⊙	2C902180		FILM BASE	2	⊙	2C905080		LABEL CONVEYING JAM	1
	2C902200		RAIL CLEANING	2	⊙	2C905090		LABEL HIGH TEMP	7
	2C902230		FILM BASE L	2	⊙	2C905100		LABEL RADIATION	1
	2C902240		FILM BASE B	2		2C905110		LABEL DRUM CAUTION	2
	2C902260		GROUND PLATE FRAME	2	⊙	2C905160		LABEL GLASS CAUTION	8
	2C902270		SPACER BASE	2	⊙	2C905170		LABEL BYPASS TABLE	7

• Parts with "⊙" indicates the spare parts.

SP	Part.No.	Alternative.	Description	Fig.No.	SP	Part.No.	Alternative.	Description	Fig.No.
⊙	2C905200		LABEL CASSETTE LGR	3		2C907320		SPRING RETARD	5
⊙	2C905220		LABEL LEFT COVER	1		2C907340		SPRING PICK UP	5
⊙	2C905230		SHEET CASSETTE SIZE(C)	3		2C907350		SPRING LEVER	5
⊙	2C905240		SHEET CASSETTE SIZE(I)	3		2C907360		SPRING CURSOR R	3
⊙	2C905270		LABEL BYPASS JAM	7	⊙	2C907370		MARKER CASSETTE	3
⊙	2C906010		COVER BYPASS	6		2C907380		TURN PLATE CASSETTE	3
⊙	2C906020		TABLE BYPASS	6	⊙	2C907390		LEVER CURSOR C	3
⊙	2C906030		FRONT CURSOR BYPASS	6		2C907400		HOLDER PULLEY A	5
⊙	2C906040		REAR CURSOR BYPASS	6		2C907410		PULLEY GUIDE A	5
⊙	2C906050		BYPASS SUB TABLE A	6		2C907420		HOLDER FEED SHAFT	5
⊙	2C906060		BYPASS SUB TABLE B	6	⊙	2C907430		BUSH PAPER FEED C	5
⊙	2C906080		GEAR 18 BYPASS	6		2C907440		RIGHT MOUNT REGIST	5
	2C906090		TERMINAL PAPER SIZE	6		2C907470		GROUND PLATE REG R	5
	2C906101		LIFT PLATE BYPASS	6		2C907480		HOLDER SENSOR	5
	2C906110		SPRING BYPASS LIFT	6		2C907490		STOPPER INDICATOR	3
⊙	2C906120		SHEET BYPASS LIFT	6		2C907500		GROUND PLATE BOTTOM	3
⊙	2C906130		STOPPER BYPASS	6		2C907510		GROUND PLATE CASS	5
⊙	2C906190		CAM BYPASS	6		2C907520		PLATE HEATER J	16
	2C906210		BYPASS PAPER GUIDE	6		2C907530		FILM REGIST R	5
	2C906220		BYPASS PAPER GUIDE R	6		2C907540		GROUND PLATE REG F	5
	2C906250		GROUND PLATE BYPASS	6		2C907550		LID CASSETTE A	3
	2C906280		GROUND PLATE LIFT	6		2C907560		LID CASSETTE B	3
	2C906290		SHEET BYPASS GUIDE	6		2C907570		LID CASSETTE C	3
⊙	2C906300		SEAL BYPASS GUIDE	6		2C907580		FILM BASE RIB	5
	2C906310		SEAL BYPASS LIFT	6	⊙	2C907590		HOLDER RIGHT CURSOR	3
	2C907010		CASSETTE	3	⊙	2C907600		PIN CURSOR C	3
	2C907020		BOTTOM CASSETTE	3		2C907610		SHEET TONER TANK	5
⊙	2C907030		REAR CURSOR C	3		2C907620		SPRING LEVER F	3
⊙	2C907040		FRONT CURSOR C	3		2C907640		STOPPER PLATE SIZE	5
	2C907050		PLATE SIDE SW	3	⊙	2C907640		GRID	9
	2C907060		PLATE SIZE DETECTION	5		2C912090		LAMP SCANNER YG	8
	2C907070		LEVER INDICATOR	3		2C912100		MIRROR FRAME A	8
	2C907080		LEFT RAIL CASSETTE	5		2C912110		REFLECTOR SCANNER	8
⊙	2C907090		SPRING SIDE SW	3		2C912141		MOUNT BASE OF HINGE LEFT	8
⊙	2C907100		STOPPER CASSETTE	5		2C912150		RETAINER WIRE	8
	2C907110		MARKER INDICATOR	3		2C912160		GUIDE FFC B	8
⊙	2C907120		ACTUATOR EMPTY	5		2C912180		FILM FRAME A	8
⊙	2C907130		GEAR Z15 REGIST	5		2C912190		STANDARD PLATE SHADING	8
⊙	2C907140		PAD CASSETTE	3		2C912200		LEFT SIZE INDICATOR	8
⊙	2C907150		SPRING BOTTOM	3		2C912210		REAR SIZE INDICATOR(M)	8
⊙	2C907190		RIGHT CURSOR A	3		2C912220		MOUNT PI	8
	2C907200		STOPPER ARM	3		2C912230		HOLDER FFC A	8
	2C907230		SHAFT PICK UP B	5	⊙	2C912250		CONTACT GLASS	8
	2C907240		PLATE PICK UP B	5		2C912260		BELT SCANNER	8
	2C907250		HOLDER RETARD	5		2C912270		LOWER SEAL SCANNER	8
⊙	2C907260		SLIDER RAIL	5	⊙	2C912280		CONTACT GLASS ADF	8
	2C907270		LEVER PICK UP	5	⊙	2C912310		GEAR Z18/39	8
⊙	2C907280		TORQUE LIMITER 340	5	⊙	2C912320		GEAR Z36	8
⊙	2C907290		SPRING REGIST B	5	⊙	2C912340		DRUM PULLEY	8
	2C907300		SHAFT RETARD	5		2C912350		FRONT WIRE SCANNER	8

• Parts with "⊙" indicates the spare parts.

SP	Part.No.	Alternative.	Description	Fig.No.	SP	Part.No.	Alternative.	Description	Fig.No.
	2C912360		REAR WIRE SCANNER	8		2C917050		REINFORCEMENT TRANS GUIDE	4
⊙	2C912380		MOTOR SCANNER	8		2C917060		SPRING TRANS F	4
⊙	2C912390		MIRROR A	8	⊙	2C917070		HOUSING STA ELIMINATION	4
	2C912410		GROUND PLATE SCANNER	8	⊙	2C917080		PLATE STA ELIMINATION	4
	2C912420		HOLDER GLASS DF	8		2C917090		TERMINAL STA ELIMINATION	4
⊙	2C912430		LID KMAS	1	⊙	2C917100		BUSH TRANSFER	4
	2C912440		LABEL SIZE (METRIC)	8	⊙	2C917110		COLLAR TRANS	4
	2C912450		LABEL SIZE (INCH)	8		2C917120		SPRING TRANS R	4
	2C912460		REAR SIZE INDICATOR(I)	8		2C917150		SPRING GUIDE TRANS	4
	2C912470		PLATE DSUB	8		2C917160		BUSH TRANS GUIDE F	4
	2C912480		HOLDER CCD WIRE	8		2C917170		BUSH TRANS GUIDE R	4
	2C912490		MOUNT DSUB	8		2C917180		BUSH TRANS ROLL F	4
	2C912580		COVER ISU	8		2C917200		SPACER TRANS ROLL	4
	2C912600		FRONT SIZE INDICATOR	8		2C917210		SPACER GUIDE LEFT TRANS	4
	2C912610		MOUNT RELEASE SWITCH	8		2C918010		BLADE CLEANING	9
	2C912620		GUIDE RELEASE SWITCH	8		2C918040		LOWER SEAL CLEANING	9
	2C912630		STOPPER RELEASE SWITCH	14		2C918050		FRONT COVER CLEANING	9
	2C912640		SHAFT RELEASE SWITCH	8		2C918150		TANK DISPOSAL	1
	2C912650		SPRING RELEASE SWITCH	8		2C918170		CAP TANK DISPOSAL	1
	2C912660		GUIDE CCD WIRE	8		2C918340		HOLDER CLAW	9
	2C912670		SHIELD SCANNER FRAME	8		2C918350		DETECTION PLATE	12
⊙	2C912680		PULLEY SCANNER	8		2C918360		SPRING DETECTION	12
	2C912690		GROUND PLATE SCANNER B	8		2C918370		CLAW SEPARATION	9
⊙	2C912700		SPONGE ORIGINAL SIZE	8		2C918400		HOLDER SENSOR B	12
	2C912710		SHIELD SCANNER FRAME B	8		2C920030		REAR GUIDE FUSER	10
	2C912720		SHIELD BASE	8		2C920040		FRONT GUIDE FUSER	10
	2C912730		SHIELD WIRE PANEL	8		2C920110		FRONT PRESSING PLATE	10
	2C914080		REAR COVER DLP	9		2C920120		REAR PRESSING PLATE	10
	2C914280		GEAR Z20H B	9		2C920130		SPRING PRESSURE	10
⊙	2C916060		LEVER CONVEYING FRONT	4		2C920150		FRONT BUSH HEAT ROLLER	10
⊙	2C916070		LEVER CONVEYING REAR	4		2C920160		REAR BUSH HEAT ROLLER	10
⊙	2C916080		STOPPER BUSH REG	4	⊙	2C920170		GEAR Z38 HEAT ROLLER	10
	2C916090		GUIDE CONVEYING	4	⊙	2C920180		GEAR FUSER Z28	10
	2C916100		SPRING REGIST F	4	⊙	2C920190		SPRING SEPARATOR	10
	2C916120		SPRING CONVEYING BASE	4		2C920200		GROUND PLATE PRESS	10
	2C916130		GROUND PLATE REG	4	⊙	2C920230		HEATER M120 FUSER	10
	2C916140		GROUND PLATE CONVEYING	4	⊙	2C920240		HEATER S120 FUSER	10
	2C916170		GUIDE FEED A	4	⊙	2C920250		HEATER M230 FUSER	10
⊙	2C916180		GEAR Z15 REGIST	4	⊙	2C920260		HEATER S230 FUSER	10
	2C916190		SPRING REGIST R	4	⊙	2C920310		THERMISTOR FUSER	10
	2C916200		LEVER TRANS GUIDE	4		2C920320		SEAL DISCHAGER	10
	2C916220		REINFORCEMENT CONVEYING	4	⊙	2C920330		BEARING PRESSURE	10
	2C916250		COLLAR REGIST	4	⊙	2C920340		THERMOCUT 180 FUSER	10
⊙	2C916260		BUSH REGIST	4	⊙	2C920410		HEATER M110 FUSER	10
	2C916270		SPACER REG F	4	⊙	2C920420		HEATER S110 FUSER	10
	2C916280		SPACER REG T0.5	4	⊙	2C921040		PULLEY FEED SHIFT	7
	2C916290		FILM CONV BASE	4		2C921080		HOUSING EXIT LOWER	7
	2C916300		FILM DU GUIDE	4		2C921091		GUIDE EXIT LOWER	7
⊙	2C917020		GEAR TRANSFER	4	⊙	2C921100		ACTUATOR EXIT INNER	7
	2C917040		TERMINAL PLATE TRANS	4	⊙	2C921110		ACTUATOR EXIT LEFT	7

• Parts with "⊙" indicates the spare parts.

SP	Part.No.	Alternative.	Description	Fig.No.	SP	Part.No.	Alternative.	Description	Fig.No.
⊙	2C921120		GEAR 23 EXIT	7		2C923020		LOWER DUCT	11
⊙	2C921160		ARM SEPARATE	7		2C923030		FILM COOLING	11
	2C921180		ARM LINK	7		2C925180		RETAINER OPERATION	13
	2C921190		SPRING PULLEY INNER	7		2C925210		SPACER OPE PCB	13
	2C921200		SPRING PULLEY FEED SHIFT	7		2C926010		BASE TERMINAL TRANSFER	2
	2C921221		SPRING GUIDE DU	7		2C926020		BASE TERMINAL MAIN	2
	2C921231		GUIDE DU	7		2C926030		TERMINAL DLP	2
	2C921240		ARM SHIFT B	7		2C926060		TERMINAL MAIN	2
	2C921260		PLATE EARTH EXIT 2	7		2C926070		HOLDER INTERLOCK SW	12
	2C921270		ARM SEPARATE B	7		2C926080		GROUND PLATE CONVEYING	2
	2C921280		SPRING SEPARATE	7		2C926100		TERMINAL FUSER	2
	2C921290		SPRING LINK	7		2C926120		GROUND PLATE FUSER	2
	2C921310		PLATE EARTH EXIT B	7		2C926130		SHIELD RIGHT COVER	1
	2C921330		SPRING ACTUATOR INNER	7		2C926140		SHIELD UPPER LEFT	2
⊙	2C921340		BELT EXIT	7,15		2C926150		SHIELD UPPER LEFT B	2
⊙	2C921350		PULLEY EXIT	7	⊙	2C926510		MOUNT POWER SOURCE	12
⊙	2C921360		PULLEY EJECT	7	⊙	2C927010		MOTOR MAIN	11
	2C921370		STOPPER SE	7	⊙	2C927020		MOTOR EJECT	11
	2C921380		SPRING PULLEY EJECT	7	⊙	2C927070		FAN COOLING 80-25	11
	2C921390		PLATE EXIT HOLDER	7	⊙	2C927090		SENSOR ORIGINAL	8
	2C921400		SHOULDER SCREW EXIT	7	⊙	2C927140		SWITCH CONTAINER	2
⊙	2C922020		GEAR 122	11	⊙	2C927170		SWITCH INTERLOCK L	12
⊙	2C922030		GEAR 88/34	11	⊙	2C927180		SWITCH INTERLOCK F	12
⊙	2C922040		GEAR 50	11	⊙	2C927190		CLUTCH FEED	11
⊙	2C922050		GEAR 40	11	⊙	2C927210		SENSOR 248NL1	5,6,8,15
⊙	2C922060		POSITIONING BUSH DRUM	11	⊙	2C927220		MOTOR REGISTRATION	11
⊙	2C922070		GEAR 30/23	11	⊙	2C927230		CORE SFT-72SNB-026K	12
⊙	2C922080		GEAR 60	11	⊙	2C927250		GASKET SHIELD 8X10X45	12
⊙	2C922100		GEAR 25 DPX	11		2C927510		WIRE ENGINE	12
⊙	2C922110		GEAR 32 DPX	11		2C927520		WIRE CASSETTE PCB	5
⊙	2C922140		GEAR 25 DEV	11		2C927530		WIRE EJECT	7
⊙	2C922150		GEAR 26 DEV	11		2C927540		WIRE DP	8
⊙	2C922170		COUPLING CONT P	11		2C927550		WIRE SCANNER PI	8
⊙	2C922180		COUPLING CONT S	11		2C927560		WIRE ORIGINAL SIZE	8
⊙	2C922190		COUPLING DRUM	11	⊙	2C927580		FFC INVERTER	8
⊙	2C922200		GEAR 43/20	11		2C927600		WIRE FUSER	12
⊙	2C922210		GEAR 20	11		2C927610		WIRE DESK POWER	12
⊙	2C922220		GEAR 25	11	⊙	2C927630		FFC CCD	8
⊙	2C922230		GEAR 29 FIX JOINT	11		2C927660		WIRE DESK	12
	2C922240		SPRING FIX JOINT	11		2C927670		WIRE CASSETTE SW	5
	2C922250		SPRING DRUM COUPLING	11		2C927680		WIRE FRONT SW	12
	2C922260		SPRING CONT P	11		2C927690		WIRE FUSER UNIT	10
	2C922270		SPRING CONT S	11	⊙	2C927740		FFC HVU	12
	2C922280		MOUNT HV PCB	11		2C927750		WIRE CASSETTE PE	5
	2C922290		HOLDER GEAR	11		2C927760		WIRE MAIN MOTOR	11
⊙	2C922300		GEAR 40 FIXJOINT	11		2C927780		WIRE DEHUMIDIFIER	16
⊙	2C922330		GEAR 30 PF	11		2C927790		WIRE UPPER LEFT	2
⊙	2C922340		GEAR 31	11	⊙	2C928080		PCB LVU 100	12
⊙	2C922360		GEAR 25 PF	11	⊙	2C928090		PCB LVU 200	12
	2C923010		UPPER DUCT	11	⊙	2C960100		MOUNT KEY COUNTER	16

• Parts with "⊙" indicates the spare parts.

SP	Part.No.	Alternative.	Description	Fig.No.	SP	Part.No.	Alternative.	Description	Fig.No.
⊙	2C960110		WIRE KEY COUNTER	16	⊙	302C917011	2C917011	ROLLER TRANSFER	4
	2C982010		SET MK-410(OPTION)	9		302C917031	2C917031	GUIDE LEFT TRANS FRONT	4
⊙	2C993020		PARTS,MC-410,SP	9		302C920011	2C920011	RIGHT FRAME FUSER	10
⊙	2C993130		PARTS,BYPASS PULLEY,SP	6		302C920021	2C920021	LEFT FRAME FUSER	10
⊙	2C993140		PARTS,BYPASS PAD,SP	6	⊙	302C920051	2C920051	ROLLER HEAT	10
⊙	2C993170		PARTS,CONTACT GLASS,M(SP)	8	⊙	302C920061	2C920061	ROLLER PRESS	10
⊙	2C993180		PARTS,CONTACT GLASS,I(SP)	8		302C920141	2C920141	PLATE HEATER FUSER	10
⊙	2C993190		PARTS,DEH.ASSY120,SP	16	⊙	302C921011	2C921011	ROLLER EXIT INNER	7
⊙	2C993200		PARTS,DEH.ASSY240,SP	16	⊙	302C921021	2C921021	ROLLER FEED SHIFT	7
⊙	2C993210		PARTS,REGIST CLEANER,ASSY	5		302C921051	2C921051	GUIDE SHIFT	7
	2CX82010		SET,PLATEN COVER TYPE D	14		302C921062	2C921062	GUIDE SEPARATE	7
	2DA06010		ACTUATOR BYPASS	6		302C921072	2C921072	HOUSING EXIT UPPER	7
	2DA25300		STOPPER LCD	13		302C921151	2C921151	ARM SHIFT	7
⊙	2DA25350		KEY OPERATION 10	13		302C921302	2C921302	BRACKET EXIT	7
	2DC12230		SLIDER SCANNER	8		302C922011	2C922011	MOUNT DRIVE UNIT	11
⊙	2DC25052		KEY PRINT	13		302C922131	2C922131	MOUNT CONT DRIVE	11
⊙	2DC25060		KEY STOP	13	⊙	302C922161	2C922161	SHAFT DPX DRIVE	11
⊙	2DC25070		KEY RESET	13		302C925192	2C925192	SHEET OPERATION PCB	2
⊙	3025418011	25418011	KEY COUNTER	16		302C926041	2C926041	TERMINAL TRANSFER	2
⊙	3029236241	29236241	SOCKET ASS'Y,KEY COUNTER	16		302C926051	2C926051	TERMINAL SEPARATION	2
	3029927232	29927232	POWER CODE AS(241)	12		302C926111	2C926111	GROUND PLATE EXIT	2
⊙	302C901192	2C901192	PCB REGISTRATION ASSY	11		302C926170	2C926170	TAPE TERMINAL	2
	302C902152	2C902152	MOUNT CONT LEVER	2	⊙	302C928041	2C928041	PCB LAMP INVERTER	8
⊙	302C904031	2C904031	TRAY EXIT (1/2)	1	⊙	302C928052	2C928052	PCB HIGH VOLTAGE	12
	302C904251	2C904251	SHAFT HOOK	7	⊙	302C968290	2C968290	CORONA WIRE MCH SP	9
⊙	302C904372	2C904372	INNER FRONT COVER	1	⊙	302C968310	2C968310	MIRROR FRAME RETAINING SP	17
⊙	302C904520	2C904520	PLATE FRONT STRAP B	7	⊙	302C993011	2C993011	PARTS,CT-410,SP	3
⊙	302C904531	2C904531	PIN FRONT STRAP B	7	⊙	302C993031	2C993031	PARTS,DV-410,SP	9
⊙	302C904560	2C904560	STOPPER COVER DSUB	1	⊙	302C993052	2C993052	PARTS,FK-410(A),SP	10
	302C905280	2C905280	LABEL CASSETTE	3	⊙	302C993062	2C993062	PARTS,FK-410(E),SP	10
	302C906242	2C906242	MOUNT LIFT PLATE	6		302C993092	2C993092	PARTS,LSU ASS'Y,SP	12
⊙	302C906330	2C906330	FILM PROTECT BYPASS B	6	⊙	302C993250	2C993250	PARTS,ISU,SP	8
	302C906430	2C906430	SPACER BYPASS	2	⊙	302C993270	2C993270	PARTS,FK-410(TW),SP	10
	302C907161	2C907161	RIGHT GUIDE REGIST	5	⊙	302C993320	2C993320	PARTS,FILM TRANS FRONT ASSY,SP J	5
⊙	302C907171	2C907171	ACTUATOR REGIST	5	⊙	302DA05050	2DA05050	LABEL BYPASS	7
	302C907181	2C907181	RIGHT ROLL REGIST	5	⊙	302DA06030	2DA06030	CUSHION BYPASS	6
	302C907211	2C907211	SHAFT PAPER FEED	5		302DA06100	2DA06100	FILM ACTUATOR BYPASS	2
⊙	302C907650	2C907650	SPACER SW	5		302DA12070	2DA12070	SEAL SCANNER	8
⊙	302C907660	2C907660	SPACER RIGHT GUIDE	10		302DA16010	2DA16010	FILM REGIST GUIDE L	4
	302C912121	2C912121	MIRROR FRAME B	8	⊙	302DA20010	2DA20010	SPACER FUSER UNIT	10
	302C912131	2C912131	ADJUSTING PLATE B	8	⊙	302DA20020	2DA20020	STOPPER FUSER SPACER	10
	302C912291	2C912291	SPRING SCANNER TENSION	8		302DA21010	2DA21010	SPRING LEVER	7
	302C912301	2C912301	MOTOR PLATE SCANNER	8		302DA21021	2DA21021	SHEET EJECT RIGHT	7
	302C912331	2C912331	SHAFT MOTOR DRIVE	8		302DA21031	2DA21031	SHEET EJECT LEFT	7
	302C912761	2C912761	PIN SCANNER	8		302DA26560	2DA26560	FILM SHIELD FFC	12
⊙	302C916021	2C916021	ROLLER REGIST LEFT	4		302DA27050	2DA27050	AC CORD 120 ASSY	12
	302C916032	2C916032	BASE CONVEYING	4		302DA27060	2DA27060	AC CORD 230 ASSY	12
	302C916151	2C916151	PIN CONVEYING HOOK	12		302DA27531	2DA27531	WIRE MPF	6
	302C916161	2C916161	SHAFT CONVEYING	4		302DA27580	2DA27580	WIRE MPF SW	6
	302C916231	2C916231	SHAFT CONVEYING LEVER	4		302FT06011	2FT06011	SHAFT BYPASS	6

• Parts with "⊙" indicates the spare parts.

SP	Part.No.	Alternative.	Description	Fig.No.	SP	Part.No.	Alternative.	Description	Fig.No.
⊙	302FT17060	2FT17060	SPACER TRANS GUIDE B	4	⊙	302HB93050	2HB93050	PARTS,KEY BOARD ASS'Y(TW)	13
⊙	302FT20120	2FT20120	SEPARATOR ASSY	10	⊙	302HB94010	2HB94010	PARTS,PWB ENGINE ASS'Y,SP	12
⊙	302FT26040	2FT26040	FILM TERMINAL MAIN	2	⊙	302HB94020	2HB94020	PARTS,PWB MAIN ASS'Y,SP	12
⊙	302FT27031	2FT27031	CLUTCH BYPASS	6	⊙	302HB94030	2HB94030	PARTS,PWB OPERATION ASS'Y,SP	13
⊙	302HA04010	2HA04010	FRONT RIGHT COVER	1	⊙	302HB94040	2HB94040	PARTS,PWB DIMM ASS'Y ENGINE,SP	17
⊙	302HA94010	2HA94010	PARTS,PWB ENGINE ASS'Y,SP	12	⊙	302HB94050	2HB94050	PARTS,PWB DIMM ASS'Y MAIN,SP	17
⊙	302HA94020	2HA94020	PARTS,PWB DIMM ASS'Y ENGINE,SP	17	⊙	302HF93040	2HF93040	PARTS LCD OPERATION	13
⊙	302HB04010	2HB04010	FRONT RIGHT COVER	1	⊙	303HY07021	3HY07021	ROLLER DUPLEX A	15
⊙	302HB05010	2HB05010	COVER OPERATION	13	⊙	303HY07031	3HY07031	ROLLER DUPLEX B	15
⊙	302HB05020	2HB05020	KEY MANAGE	13	⊙	303HY07131	3HY07131	SHAFT 4 DUPLEX	15
⊙	302HB05030	2HB05030	KEY SAVER	13	⊙	303KC94010	3KC94010	PARTS,PWB GDI ASS'Y,SP	17
⊙	302HB05040	2HB05040	KEY ZOOM	13	⊙	3065027601	65027601	POWER CORD 110	12
⊙	302HB05050	2HB05050	KEY SELECT	13	⊙	34821210		STATIC ELIMINATOR B,EJECT	7
⊙	302HB05060	2HB05060	KEY PHOTO	13	⊙	34907141		GEAR 18,CASSETTE	3
⊙	302HB05070	2HB05070	KEY EXPOSURE	13	⊙	34922480		BEARING,REGISTRATION FULCRUM	11
⊙	302HB05080	2HB05080	KEY FUNCTION	13	⊙	35968110		STOPPER WIRE ASS'Y SP	17
⊙	302HB05090	2HB05090	CENTER OPE COVER	13	⊙	3CY07080		BUSHING 6	5,7,11
⊙	302HB05100	2HB05100	LID CENTER COVER	13	⊙	3HY07010		FRAME DUPLEX	15
⊙	302HB05110	2HB05110	LID PRINT	13	⊙	3HY07040		PULLEY 26-6 DUPLEX	15
⊙	302HB05120	2HB05120	LID SAVER	13	⊙	3HY07050		PULLEY 26-8 DUPLEX	15
⊙	302HB05130	2HB05130	CENTER OPE SHEET E	13	⊙	3HY07060		JUNCTION PLATE DUPLEX	15
⊙	302HB05140	2HB05140	LEFT OPE SHEET	13	⊙	3HY07070		SPRING JUNCTION DUPLEX	15
⊙	302HB05150	2HB05150	RIGHT DUST SHIELD	13	⊙	3HY07090		GEAR 21 DUPLEX	15
⊙	302HB05160	2HB05160	CENTER DUST SHIELD	13	⊙	3HY07100		PULLEY IDLE DUPLEX	15
⊙	302HB05170	2HB05170	LEFT DUST SHIELD	13	⊙	3HY07110		RETAINER DUPLEX	15
⊙	302HB05180	2HB05180	GROUND PLATE LCD	13	⊙	3HY07120		PULLEY 15 DUPLEX	15
⊙	302HB05190	2HB05190	LEFT SHEET E	13	⊙	3HY07140		HOLDER DUPLEX SPRING	15
⊙	302HB05200	2HB05200	SHEET SET E	13	⊙	3HY07150		BUSHING DUPLEX ROLLER	15
⊙	302HB05210	2HB05210	KEY ONLINE	13	⊙	3HY07160		SPRING DUPLEX PULLEY	15
⊙	302HB05220	2HB05220	MOUNT OPERATION R	13	⊙	3HY07170		ACTUATOR DUPLEX	15
⊙	302HB05300	2HB05300	CENTER OPE SHEET I	13	⊙	3HY07190		RETAINER ACTUATOR	15
⊙	302HB05310	2HB05310	CENTER OPE SHEET(JP)	13	⊙	3HY07190		PROTECTING PLATE WIRE	15
⊙	302HB05330	2HB05330	LEFT SHEET(FR)	17	⊙	3HY07200		GROUND PLATE DUPLEX	15
⊙	302HB05340	2HB05340	LEFT SHEET(DE)	17	⊙	3HY07210		LID DUPLEX	15
⊙	302HB05350	2HB05350	LEFT SHEET(IT)	17	⊙	3HY07220		PLATE LOCK DUPLEX	15
⊙	302HB05360	2HB05360	LEFT SHEET(ES)	17	⊙	3HY27010		WIRE DUPLEX	15
⊙	302HB05370	2HB05370	LEFT SHEET(RU)	17	⊙	3HY27020		CLUTCH DU	15
⊙	302HB05440	2HB05440	LEFT SHEET(TW)	13	⊙	5ESP03090001+01	SP000360	PUSH SWITCH 03 SN	5
⊙	302HB05450	2HB05450	SHEET SET(TW)	13	⊙	5FNXGP1A73A++02	2DC27180	PT.SENSOR GP1A73AJ00	8
⊙	302HB05460	2HB05460	SHEET SET EUR	17	⊙	5MMS111SL002	2BY20050	NUT FUSER A	10
⊙	302HB05470	2HB05470	LEFT SHEET(PO)	17	⊙	5MMW141LX002	2BZ02300	SPRING WIRE	9
⊙	302HB31010	2HB31010	MOUNT REG MOTOR	11	⊙	5MVM176NN001	2BZ22230	BUSH GEAR Z26H 49515M0001A4	9
⊙	302HB31020	2HB31020	GEAR 68 REG	11	⊙	5MVT263NN001	33910230	PIN CHARGER	9
⊙	302HB31030	2HB31030	PLATE REG MOTOR	11	⊙	5MVX111DN003	2A806250	RING STOPPER	3,11
⊙	302HB39010	2HB39010	SHIELD MAIN	12	⊙	5MVX111DN007	2BT11070	STOPPER 3	7
⊙	302HB39020	2HB39020	LID PRINTER	12	⊙	60804120		MAGNET CATCH	1
⊙	302HB46010	2HB46010	WIRE PANEL	13	⊙	60904280		ORIGINAL POCKET	14
⊙	302HB93020	2HB93020	PARTS,KEY BOARD ASS'Y E	13	⊙	66060030		RETAINER,KEY COUNTER	16
⊙	302HB93030	2HB93030	PARTS,KEY BOARD ASS'Y I	13	⊙	66060040		MOUNT,KEY COUNTER	16
⊙	302HB93040	2HB93040	PARTS LCD OPERATION	13	⊙	76508130		SPRING BELT GUIDE ROLLER	3

• Parts with "⊙" indicates the spare parts.

SP	Part.No.	Alternative.	Description	Fig.No.
	M0208010		SPACER,SFS-2.6S-B1WM(JST)	8
	M2105400		CLAMP,K-103G	6
	M2105740		MINIATURE CLAMP,UAMS-05S-2	12
	M2105910		CLAMP,CKN-07(KITAGAWA)	12
	M2107240		BAND,KI-100(KITAGAWA)	12
	M2108130		SPACER,KGPS-4S	12
	M2109000	49513901	WIRE SADDLE,WS-1NS	8,12
	M2109020	49829401	WIRE SADDLE,WS-2WS	12
	M7005030		CLAMP,EMT-5N(TAKEUCHI)	12
	M70A5020		CLAMP,FCC-125EM513(TAKEUCHI)	12



KASUN
Best Solution

• Parts with "☉" indicates the spare parts.

KYOCERA MITA AMERICA, INC.

Headquarters:

225 Sand Road,
Fairfield, New Jersey 07004-0008
TEL : (973) 808-8444
FAX : (973) 882-6000

New York Branch:

1410 Broadway 23rd floor
New York, NY 10018
TEL : (917) 286-5400
FAX : (917) 286-5402

Northeastern Region:

225 Sand Road,
Fairfield, New Jersey 07004-0008
TEL : (973) 808-8444
FAX : (973) 882-4401

Midwestern Region:

201 Hansen Court Suite 119
Wood Dale, Illinois 60191
TEL : (630) 238-9982
FAX : (630) 238-9487

Western Region:

14101 Alton Parkway,
Irvine, California 92618-7006
TEL : (949) 457-9000
FAX : (949) 457-9119

Southeastern Region:

1500 Oakbrook Drive,
Norcross, Georgia 30093
TEL : (770) 729-9786
FAX : (770) 729-9873

Southwestern Region:

2825 West Story Road,
Irving, Texas 75038-5299
TEL : (972) 550-8987
FAX : (972) 252-9786

National Operation Center & National Training Center:

2825 West Story Road,
Irving, Texas 75038-5299
TEL : (972) 659-0055
FAX : (972) 570-5816

Latin America Division:

8240 N.W. 52nd. Terrace Dawson Building,
Suite 108 Miami, Florida 33166
TEL : (305) 421-6640
FAX : (305) 421-6666

KYOCERA MITA CANADA, LTD.

6120 Kestrel Road, Mississauga,
Ontario L5T 1S8, Canada
TEL : (905) 670-4425
FAX : (905) 670-8116

KYOCERA MITA MEXICO, S.A. DE C.V.

Av. 16 de Septiembre #407
Col. Santa Inés,
Azcapotzalco México,
D.F. 02130, México
TEL : (55) 5383-2741
FAX : (55) 5383-7804

© 2005 KYOCERA MITA Corporation
<http://www.kyoceramita.com>

Printed in U.S.A.



KYOCERA MITA EUROPE B.V.

Hoeksteen 40, 2132 MS Hoofddorp,
The Netherlands
Phone: +31.(0)20.654.0000
Home page: <http://www.kyoceramita-europe.com>
Email: info@kyoceramita-europe.com

KYOCERA MITA NEDERLAND B.V.

Hoeksteen 40 2132 MS Hoofddorp,
The Netherlands
Phone: +31.(0)20.587.7200

KYOCERA MITA (UK) LTD.

8 Beacontree Plaza
Gillette Way, Reading Berks RG2 0BS,
UK
Phone: +44.(0)118.931.1500

KYOCERA MITA ITALIA S.P.A.

Via Verdi 89 / 91 20063 Cernusco sul Naviglio
(Milano), Italy
Phone: +39.02.92179.1

S.A. KYOCERA MITA BELGIUM N.V.

Hermesstraat 8A 1930 Zaventem,
Belgium
Phone: +32.(0)2.720.9270

KYOCERA MITA FRANCE S.A.

Parc Les Algorithmes, Saint Aubin
91194 GIF-SUR-YVETTE,
France
Phone: +33.(0)1.6985.2600

KYOCERA MITA ESPAÑA S.A.

Edificio Kyocera, Avda de Manacor N. 2,
Urb. Parque Rozas 28290 Las Rozas, Madrid,
Spain
Phone: +34.(0)91.631.8392

KYOCERA MITA FINLAND OY

Kirvesmiehenkatu 4 00810 Helsinki,
Finland
Phone: +358.(0)9.4780.5200

KYOCERA MITA (SCHWEIZ) AG
Industriestrasse 28, 8604 Volketswil,
Switzerland
Phone: +41.(0)1.908.4949

KYOCERA MITA DEUTSCHLAND GMBH

Mollsfield 12-40670 Meerbusch,
Germany
Phone: +49.(0)2159.918.0

KYOCERA MITA GMBH AUSTRIA

Eduard-Kittenberger Gasse 95
A-1230 Wien,
Austria
Phone: +43.(0)1.86338.401

KYOCERA MITA SVENSKA AB

Vretenragen 2, 6tr 171 54 Solna,
Sweden
Phone: +46.(0)8.546.550.00

KYOCERA MITA NORGE

Postboks 150 Oppsal, NO 0619 Oslo
Olaf Helsettsvei 6, NO 0694 Oslo,
Norway
Phone: +47.(0)22.62.73.00

KYOCERA MITA DANMARK A/S

Slotsmarken 11, 2 DK-270 Hørsholm,
Denmark
Phone: +45.7022.3880

KYOCERA MITA PORTUGAL LDA

Rua do Centro Cultural, no 41 1700-06 Lisbon,
Portugal
Phone: +351.(0)21.843.6780

KYOCERA MITA SOUTH AFRICA (PTY) LTD.

527 Kyalami Boulevard,
Kyalami Business Park Midrand,
South Africa
Phone: +27.(0)11.540.2600

KYOCERA MITA AMERICA, INC.

Headquarters:
225 Sand Road,
Fairfield, New Jersey 07004-0008,
U.S.A.
Phone: (973) 808-8444

KYOCERA MITA AUSTRALIA PTY. LTD.
Level 3, 6-10 Talavera Road, North Ryde,
N.S.W. 2113 Australia
Phone: (02) 9888-9999

KYOCERA MITA NEW ZEALAND LTD.

1-3 Parkhead Place, Albany
P.O. Box 302 125 NHPC, Auckland,
New Zealand
Phone: (09) 415-4517

KYOCERA MITA (THAILAND) CORP., LTD.

9/209 Ratchada-Prachachem Road,
Bang Sue, Bangkok 10800, Thailand
Phone: (02) 586-0320

KYOCERA MITA SINGAPORE PTE LTD.

121 Genting Lane, 3rd Level,
Singapore 349572
Phone: 67418733

KYOCERA MITA HONG KONG LIMITED

11/F., Mita Centre,
552-566, Castle Peak Road,
Tsuen Wan, New Territories,
Hong Kong
Phone: 24297422

KYOCERA MITA TAIWAN Corporation.

7F-1~2, No.41, Lane 221, Gangchi Rd.
Neihu District, Taipei, Taiwan, 114. R.O.C.
Phone: (02) 87511560

KYOCERA MITA Corporation

2-28, 1-chome, Tamatsukuri, Chuo-ku
Osaka 540-8585, Japan
Phone: (06) 6764-3555
<http://www.kyoceramita.com>