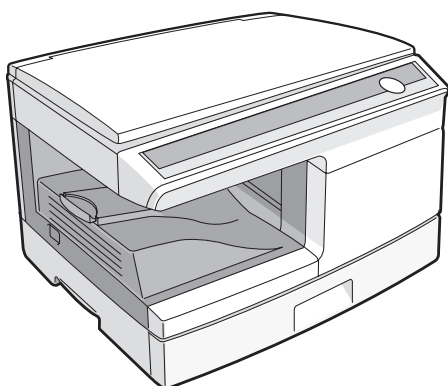


Revised Edition



DIGITAL MULTIFUNCTIONAL SYSTEM/DIGITAL COPIER

AR-203E
MODEL AR-5420

CONTENTS

- | | |
|---------------------------------------|-----------------------------------|
| 1 Exteriors | 15 TC case unit |
| 2 Original cover unit | 16 250 sheets tray |
| 3 Operation panel | 17 Harness |
| 4 Side door unit | 18 Process unit |
| 5 Optical frame | 19 DV cartridge unit |
| 6 LSU section | 20 Packing material & accessories |
| 7 Middle frame | ■ Index |
| 8 Base plate unit 1 | |
| 9 Base plate unit 2 | |
| 10 Fusing unit | |
| 11 Drive unit | |
| 12 Multi manual paper feed cover unit | |
| 13 Multi manual paper feed unit | |
| 14 Socket holder unit | |

DEFINITION

- Rank A : Maintenance parts, and consumable parts which are not included in but closely related to maintenance parts
Rank B : Performance/function parts (sensors, clutches, and other electrical parts), consumable parts
Rank E : Unit parts including PWB
Rank D : Preparation parts (External fitting, packing, parts packed together)
Rank C : Parts other than the above (excluding sub components of PWB)

Because parts marked with "△" is indispensable for the machine safety maintenance and operation, it must be replaced with the parts specific to the product specification.

- Other than this Parts Guide, please refer to documents Service Manual(including Circuit Diagram)of this model.
- Please use the 13 digit code described in the right hand corner of front cover of the document, when you place an order.
- For U.S. only-Use order codes provided in advertising literature. Do not order from parts department.

[NOTE]

- * There parts are supplied by SMF

<Note for use of the revised Parts Guide>







- Interchangeability of parts is expressed by No1~6 as shown in the table below.

<Interchangeability>

1	Interchangeable.
2	Current type can be used in place of new type. New type cannot be used in place of current type.
3	Current type cannot be used in place of new type. New type can be used in place of current type.
4	Not interchangeable.
5	Interchangeable if replaced with same types of related parts in use.
6	Others.

- New & Addition, Change, Abolition, and Quantity change are expressed with the marks shown in the table below.

<Change of Division>

New & Addition	
Change	
Abolition	
Quantity (increase) /Others	
Quantity (decrease)	
Correction	

- Running Change of Effective Time is expressed as R/C.

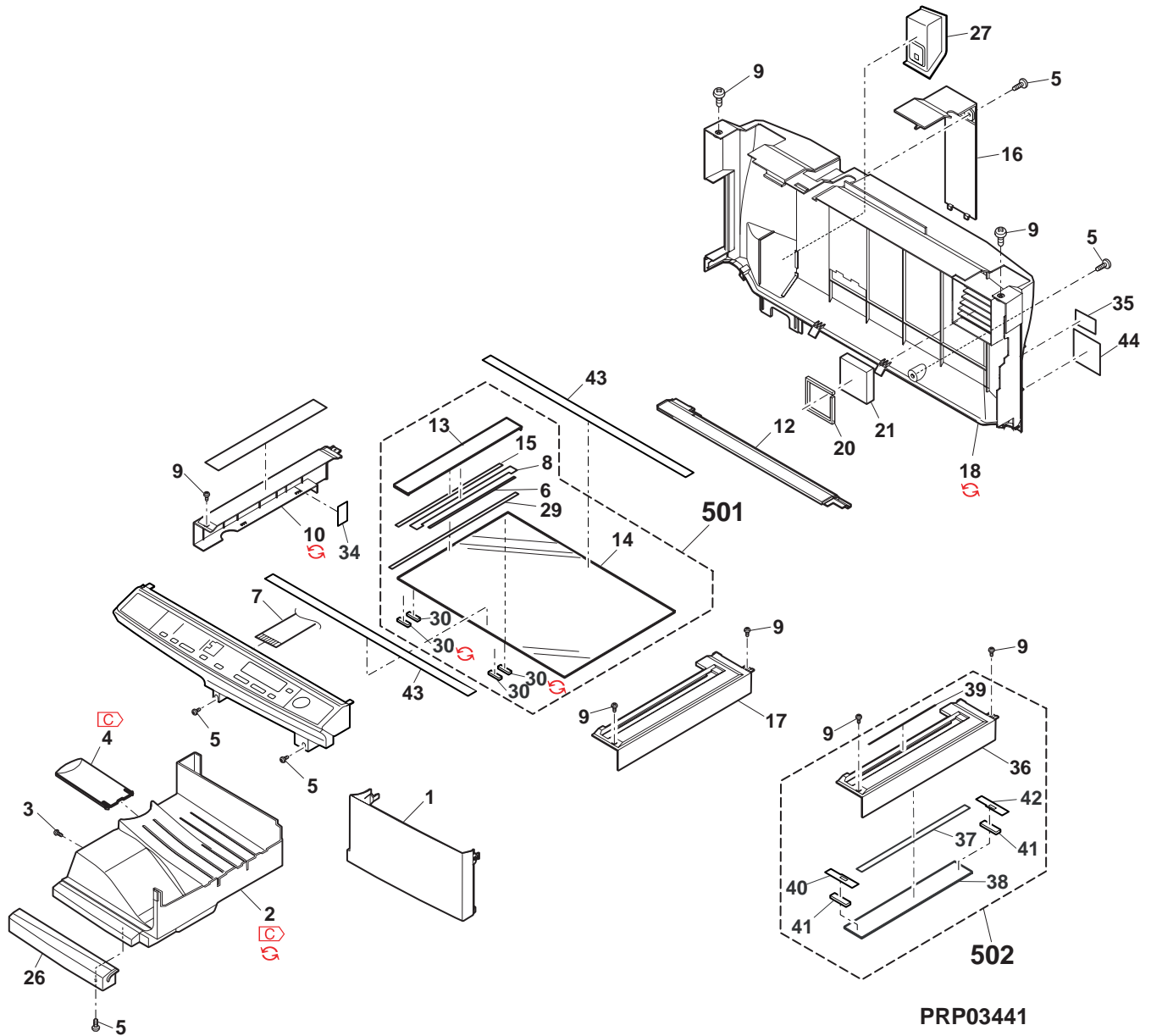
<Effective Time>

R / C	Running Change
-------	----------------

1 Exteriors

[illegible]

1 Exteriors

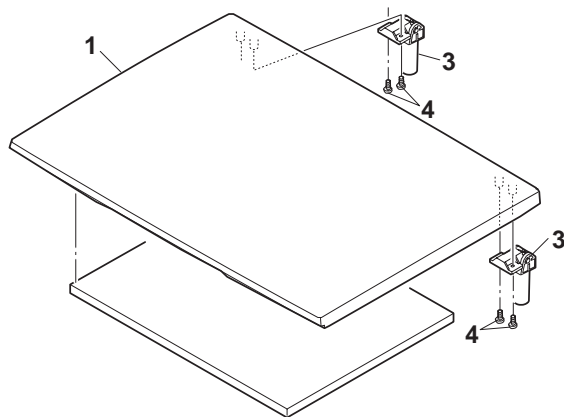


PRP03441

2 Original cover unit

NO.	PARTS CODE	Inter-change	PRICE RANK	NEW MARK	PART RANK	DESCRIPTION	TR No.	Effective time
1	GCÖVH0072QSZZ		AY	N	D	OC cover		
3	CHNG-0007QS04		AL	N	C	OC hinge		
4	XEBS740P10000		AA		C	Screw(4×10)		
	(Unit)							
901	CCÖVH0072TS51		*	N	E	OC cover unit [Europe,Russia]		
	CCÖVH0072RS51		BC		E	OC cover unit [Other Countries]		

2 Original cover unit

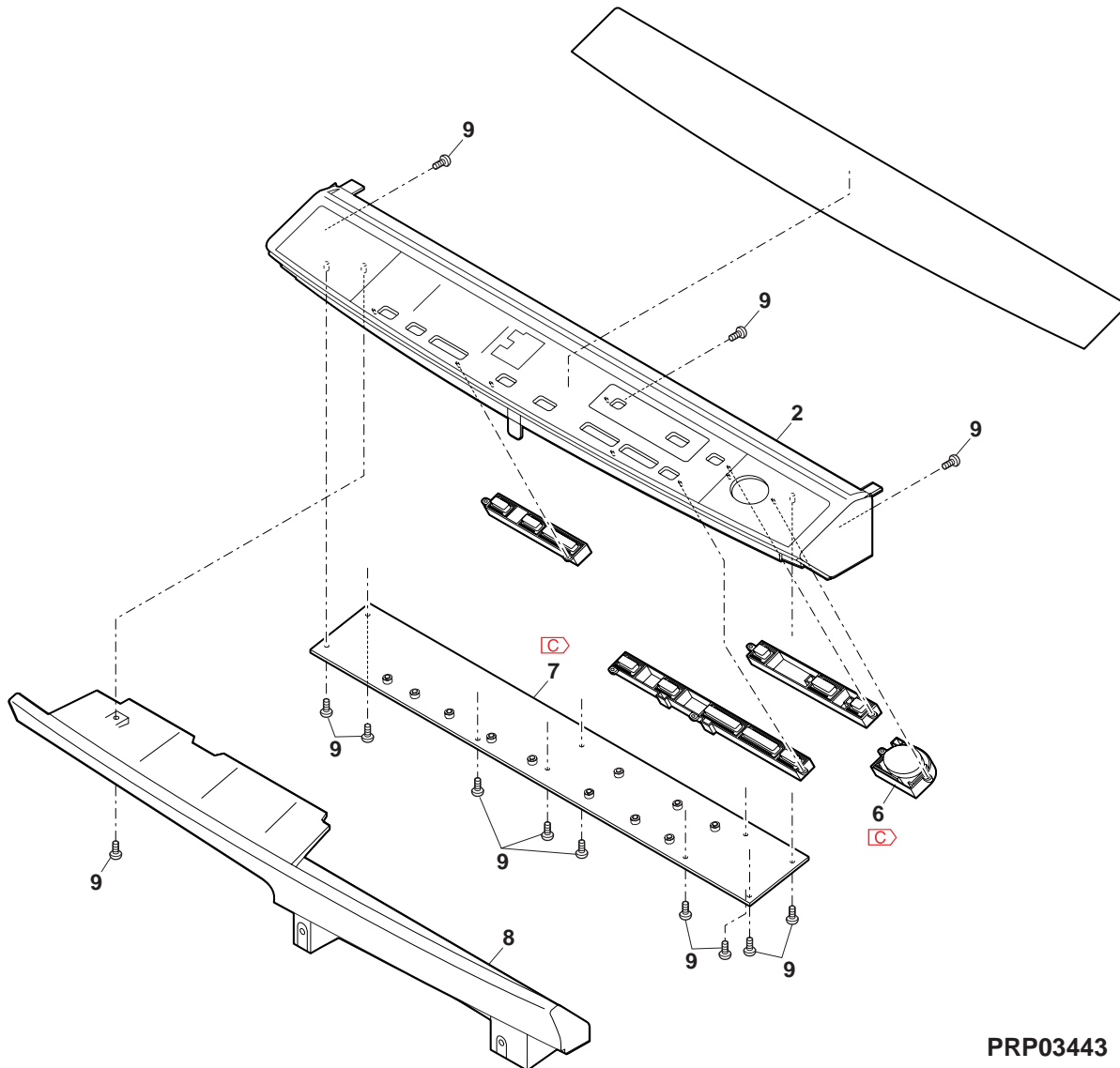


PRP03442

3 Operation panel

NO.	PARTS CODE	Inter-change	PRICE RANK	NEW MARK	PART RANK	DESCRIPTION	TR No.	Effective time
2	GCAB-0106QSRZ	-	AN	N	D	Operation panel		
6	CBTN-0090QS02	-	AK		E	Start key AS [Missing parts code]		1st lot
7	CPWBF0208QS35	-	BP		E	Operation PWB [Missing parts code][AR-203E]		1st lot
7	CPWBF0208QS34	-	BP		E	Operation PWB [Missing parts code][AR-5420]		1st lot
8	GCAB-0105QSZZ		AR		D	Operation cabinet		
9	XEBS730P08000		AC		C	Screw(3x8)		

3 Operation panel

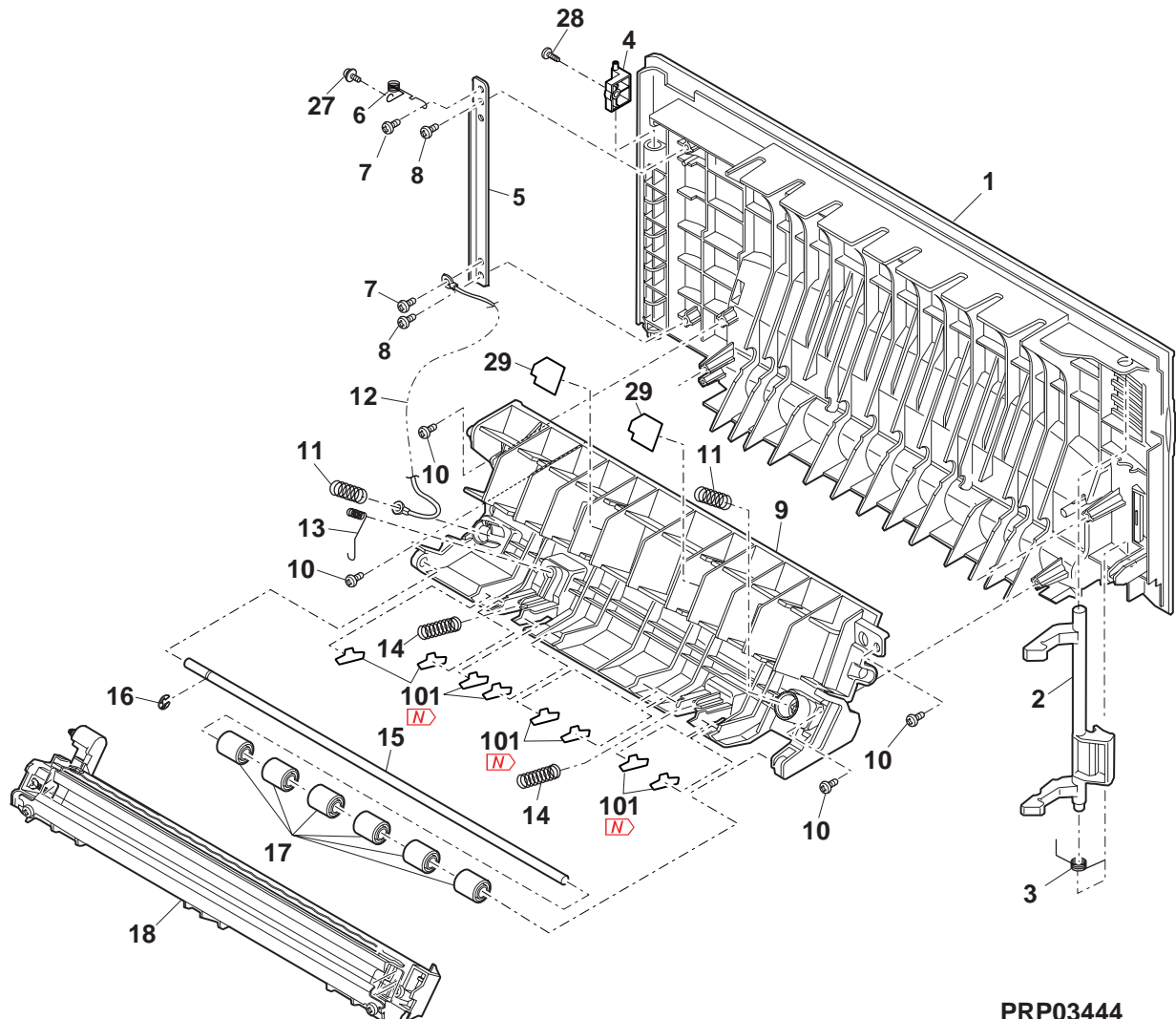


PRP03443

4 Side door unit

NO.	PARTS CODE	Inter-change	PRICE RANK	NEW MARK	PART RANK	DESCRIPTION	TR No.	Effective time
1	GCAB-0007QSW6		AU		D	Side door		
2	PTME-0004QSWZ		AH		C	Lock pawl		
3	MSPRT0029QSZZ		AC		C	Lock pawl spring		
4	PGIDM0008QSZZ		AD		D	Hinge guide		
5	LPLTM0043QSZZ		AD		C	Earth plate		
6	MSPRD0381QSZZ		AD		C	Earth spring		
7	XHBS730P06000		AC		C	Screw(3x6)		
8	XEBS730P06000		AA		C	Screw(3x6)		
9	LFRM-0003QJSJ3		AN		C	Side door inner frame		
10	XEBS730P10000		AC		C	Screw(3x10)		
11	MSPRC0032QSZZ		AB		C	Transfer pressure spring		
12	DHAi-0291QSZZ		AC		C	TC FB harness		
13	MSPRC0031QSZZ		AB		C	PS earth spring		
14	MSPRC0030QSZZ1		AD		C	PS pressure spring		
15	NSFTZ0086QSZZ		AZ		C	PS follower shaft		
16	XRESP30-06000		AA		C	E-ring(E3)		
17	NROLP1122FCZZ		AF		C	PS upper roller		
18	CHLDZ0010RS52		AU		E	Transfer unit		
27	XBPS730P04KS0		AB		C	Screw(3x4KS)		
28	XBBS740P08000		AA		C	Screw(4x8)		
29	PSHEP0586QSZZ		AE		C	Fusing front transport sheet		
101	PSHEP0612QSZZ	-	AA		C	Lib guide sheet		08/03

4 Side door unit

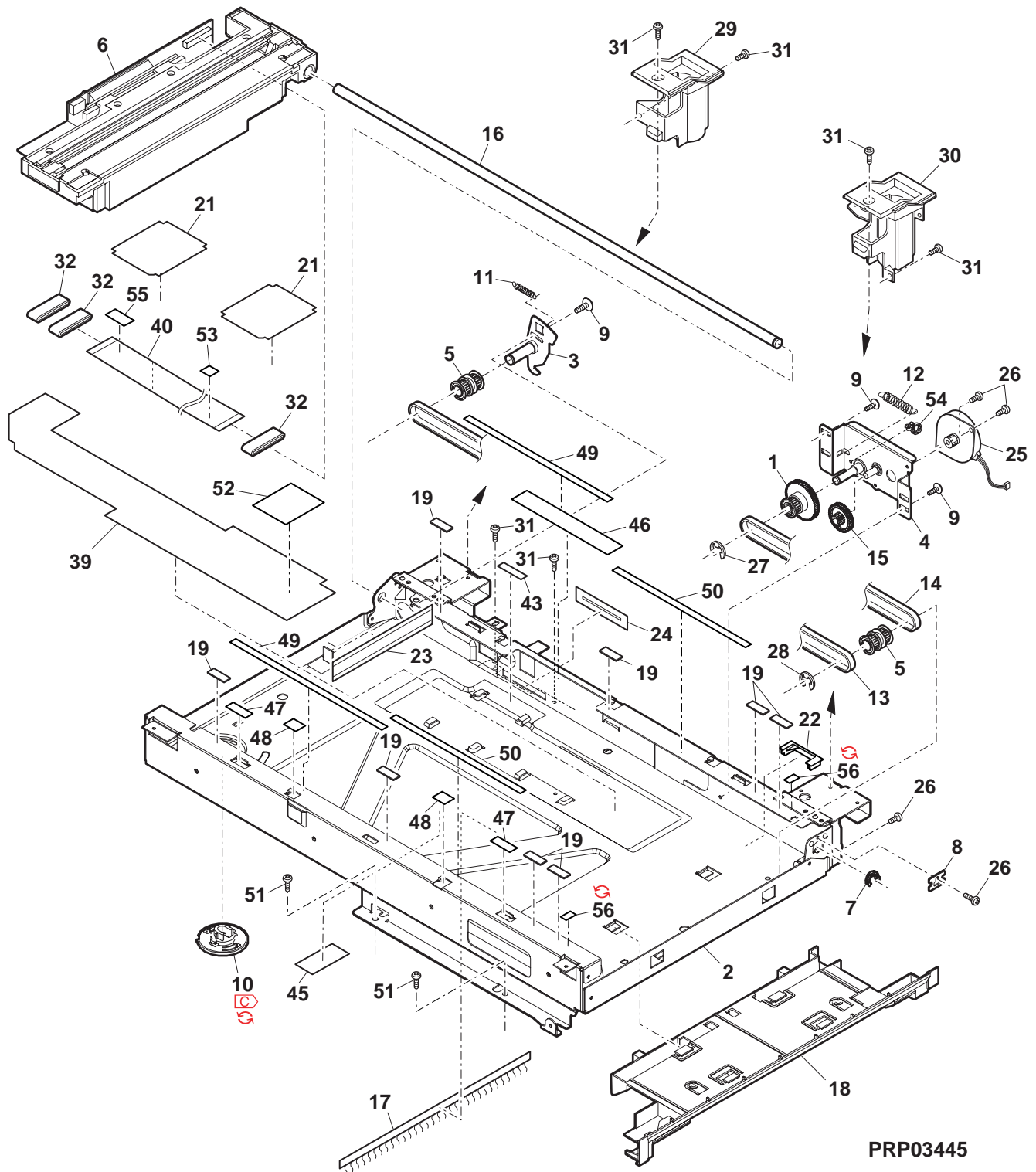


PRP03444

5 Optical frame

[illegible]

5 Optical frame

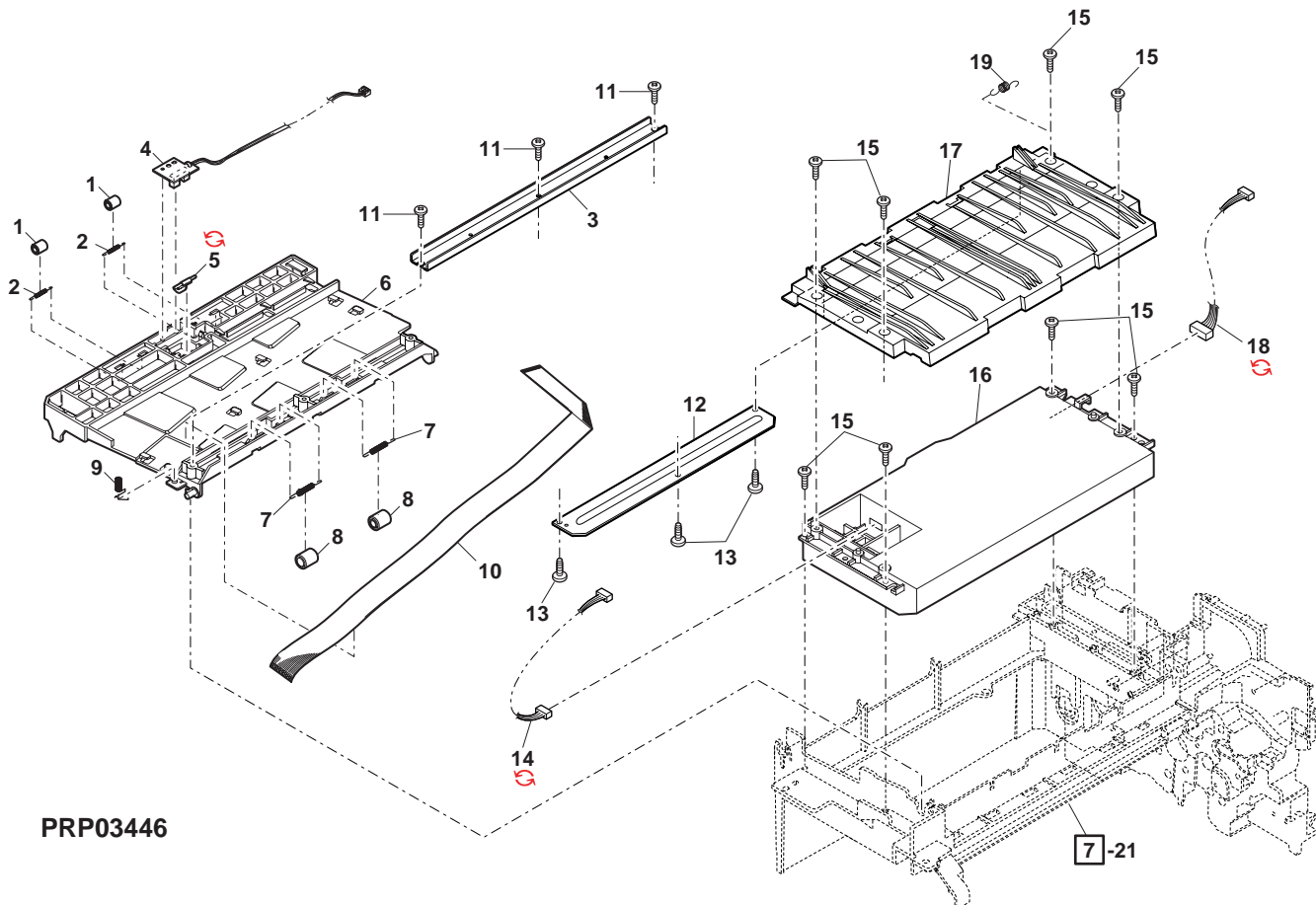


PRP03445

6 LSU section

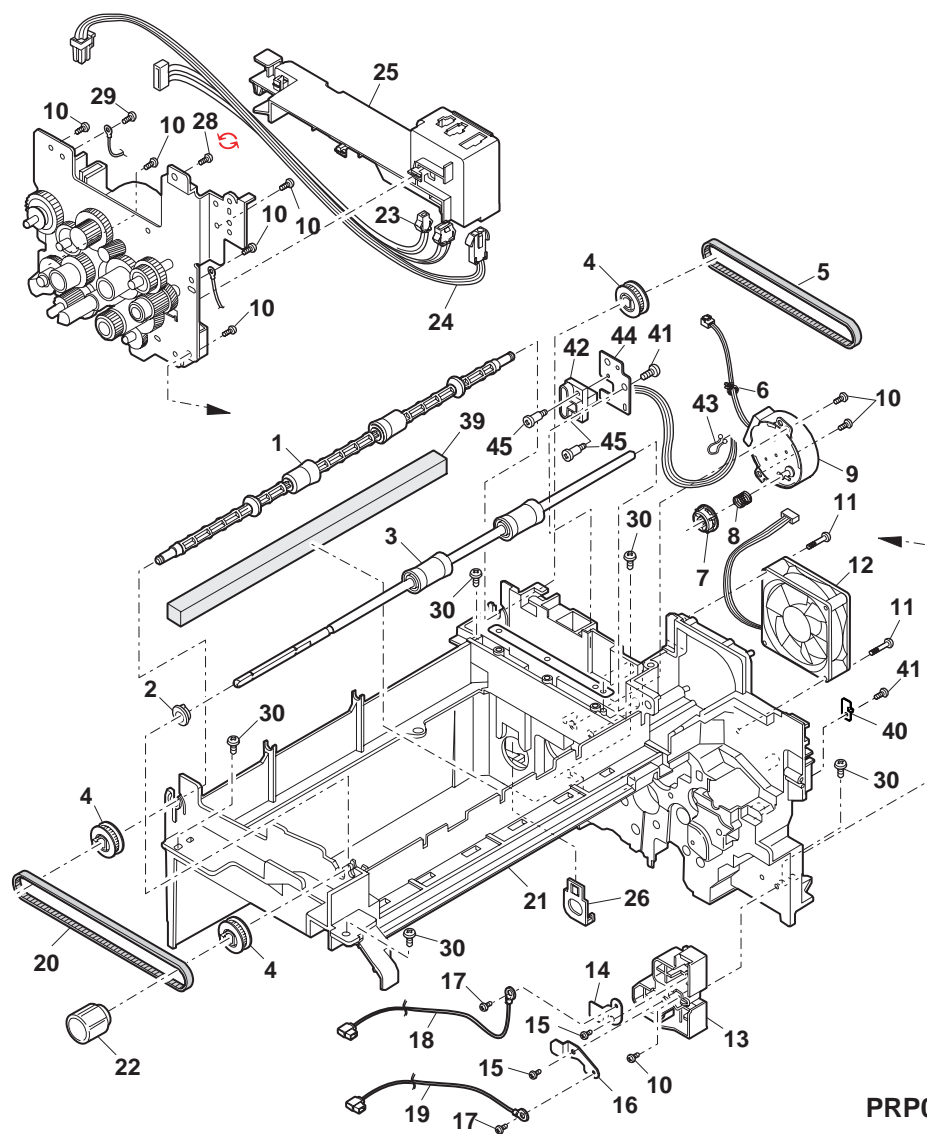
NO.	PARTS CODE	Inter-change	PRICE RANK	NEW MARK	PART RANK	DESCRIPTION	TR No.	Effective time
1	NR0LP0046QSZZ		AC		C	Delivery roller upper		
2	MSPRT0020QSZ1		AB		C	Delivery roller spring		
3	PGIDH0134QSZZ		AF		D	Upper paper guide reinforce plate		
4	CPWBF0191QSF0		AH		E	POD sensor PWB		
5	MLEVP0005QSZ2		AC		C	Delivery actuator		
5	MLEVP0005QSZ3	1	AC		C	Delivery actuator		08/04
6	PGIDM0006QSZ5		AP		D	Delivery paper guide		
7	MSPRC0021QSZZ		AB		C	Delivery transport roller spring		
8	NR0LP1122FCZZ		AF		C	PS upper roller		
9	MSPRD0281QSZZ		AD		C	Delivery earth spring		
10	DHAI-0513QSPZ		AF		C	OP-MCU harness		
11	XEBS730P08000		AC		C	Screw(3x8)		
12	PGIDH0138QSZZ		AE		D	LSU paper guide reinforce plate		
13	XEBS730P06000		AA		C	Screw(3x6)		
14	DHAI-0529QSPZ		AL		C	Polygon harness		
14	DHAI-0529QSP1	3	AH		C	Polygon harness [Productivity improvement]		08/02
15	XEBS730P10000		AC		C	Screw(3x10)		
16	DUNTK0645QSZZ		BV		E	LSU		
17	PGIDM0137QSZ1		AM		D	LSU paper guide		
18	DHAI-0530QSPZ		AG		C	Laser harness		
18	DHAI-0530QSP1	3	AG		C	Laser harness [Productivity improvement]		08/02
19	MSPRT0019QSZ1		AB		C	Delivery transport paper guide spring		

6 LSU section



7 Middle frame

[illegible]

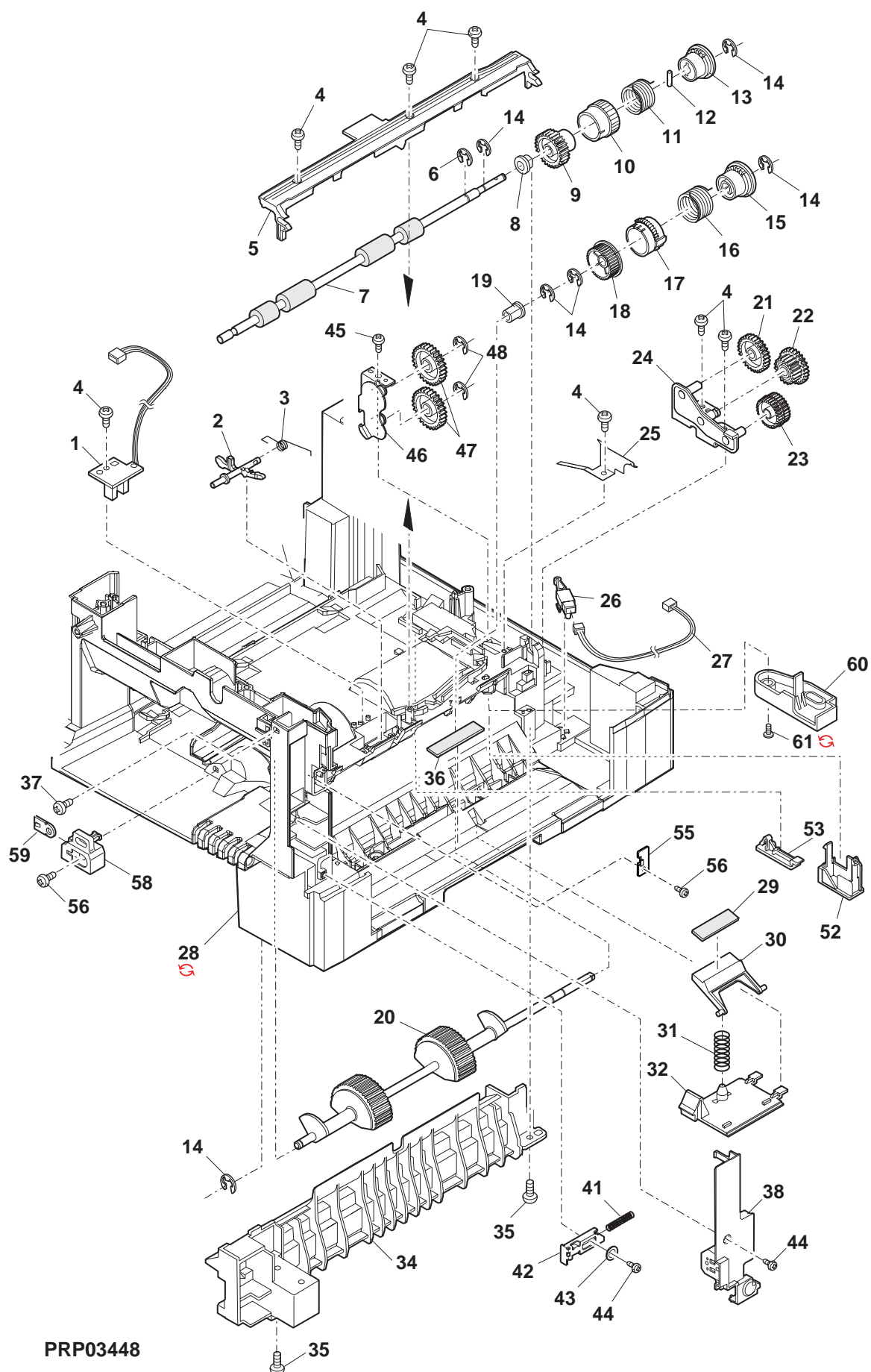
7 Middle frame

PRP03447

8 Base plate unit 1

[illegible]

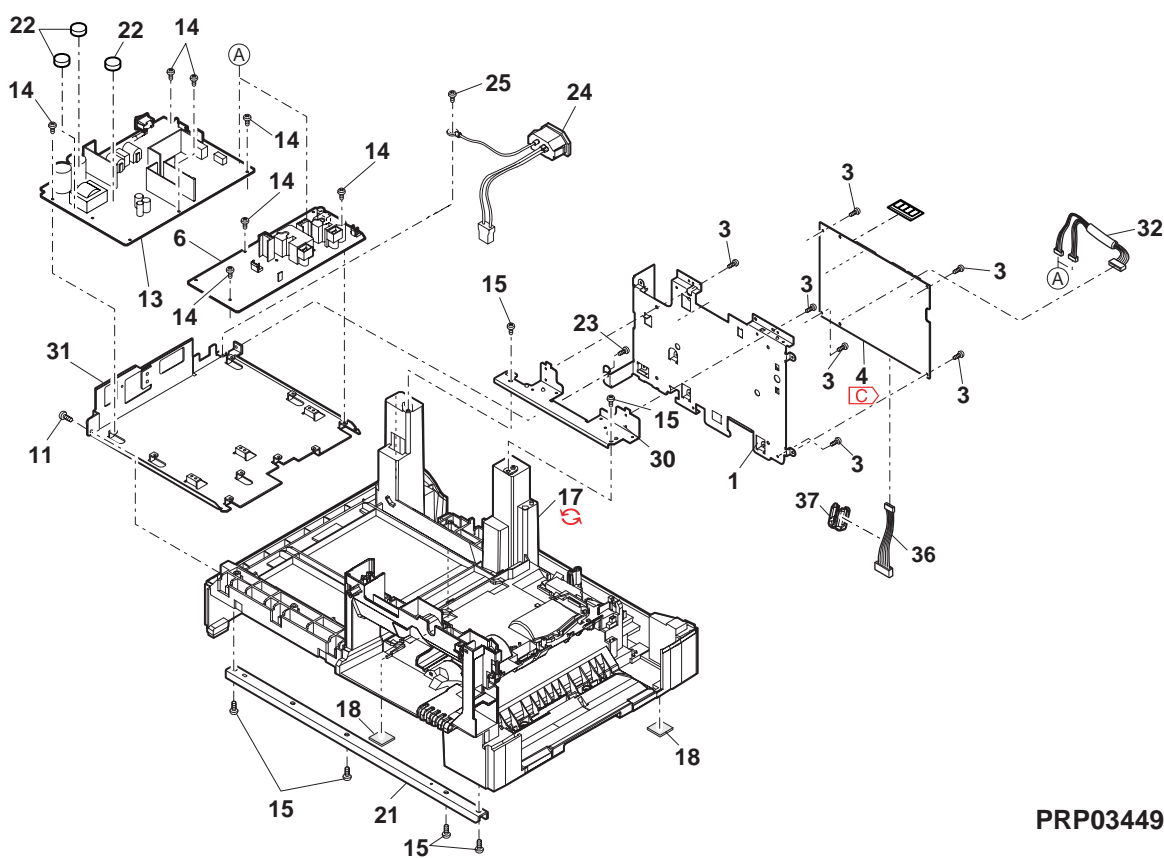
8 Base plate unit 1



PRP03448

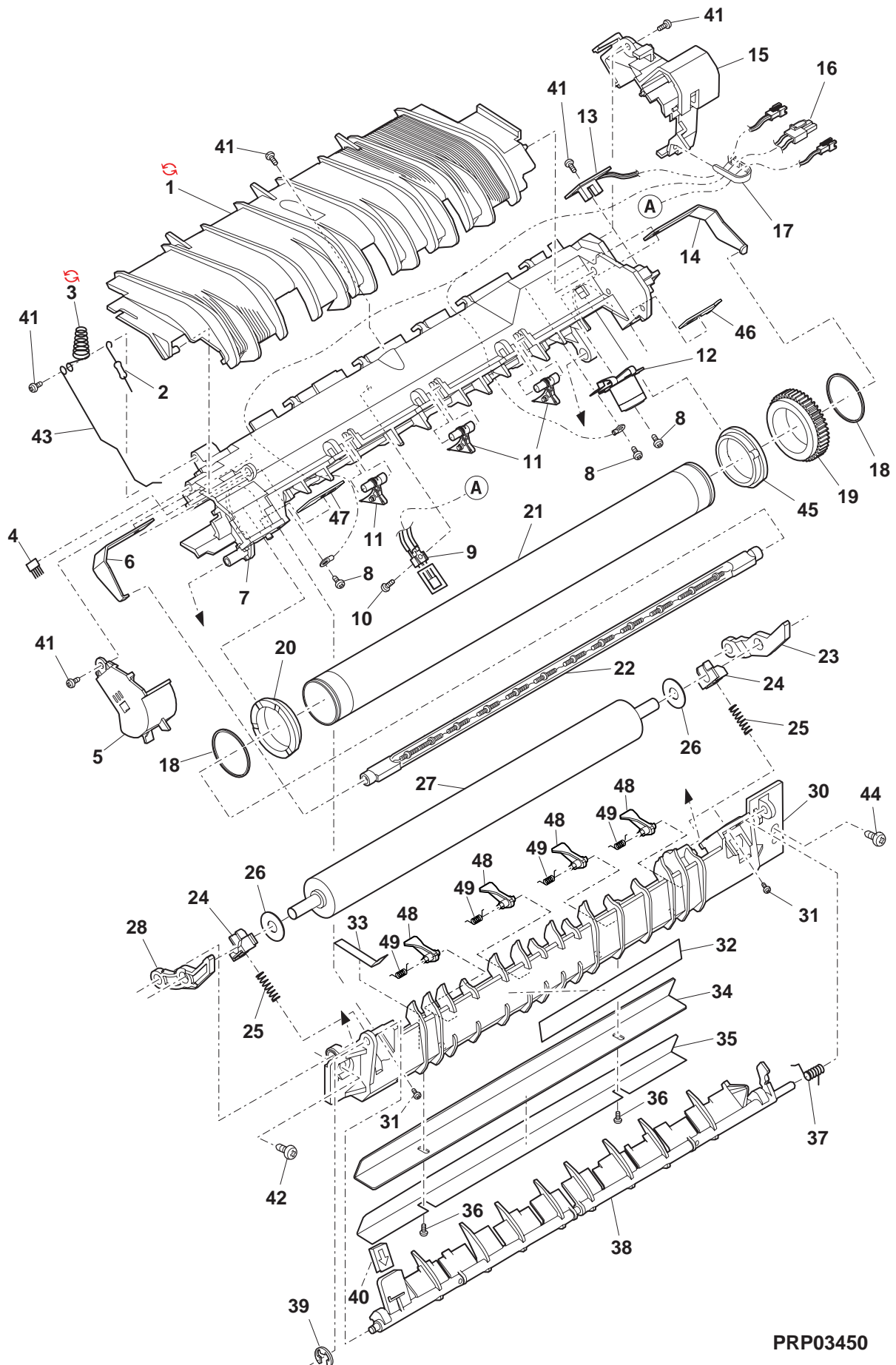
9 Base plate unit 2

[illegible]

9 Base plate unit 2

PRP03449

10 Fusing unit

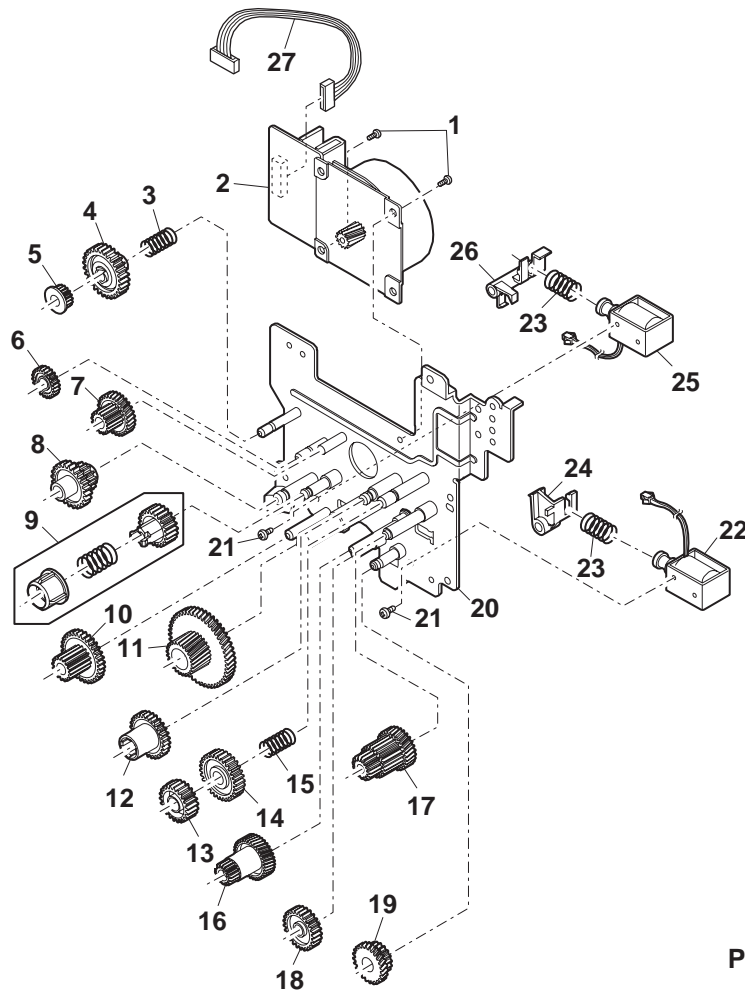


PRP03450

11 Drive unit

NO.	PARTS CODE	Inter-change	PRICE RANK	NEW MARK	PART RANK	DESCRIPTION	TR No.	Effective time
1	XBBS740P06000		AA		C	Screw(4x6)		
2	RMOTP0061QSPZ		BS		B	Main motor		
3	MSPRC0053QSZ1		AC		C	Pulley spring		
4	NGERH0050QSZZ		AD		C	Ratchet gear(33T)		
5	NPLYZ0002QSZZ		AC		C	Pulley(17T)		
6	NGERH0010QSZZ		AD		C	Gear(28T)		
7	NGERH0009QSZZ		AD		C	Gear(46/16T)		
8	NGERH0014QSZZ		AD		C	Gear(30/15T)		
9	CGERH0011RS51		AE		E	MG gear unit		
10	NGERH0015QSZZ		AD		C	Gear(37/15T)		
11	NGERH0007QSZZ		AH		C	Gear(68/26T)		
12	NGERH0016QSZ1		AD		C	Coupling gear(34T)		
13	NGERH0019QSZ1		AC		C	Ratchet gear(21T)		
14	NGERH0018QSZZ		AC		C	Ratchet gear(28T)		
15	MSPRC0023QSZ1		AC		C	Ratchet spring		
16	NGERH0205QSZZ		AF		C	Gear(55/19T)		
17	NGERH0017QSZ1		AD		C	Gear(33/20/15T)		
18	NGERH0012QSZZ		AE		C	Gear(20T)		
19	NGERH0013QSZZ		AG		C	Gear(31/17T)		
20	CPLTM0042QS04		AX		C	Main drive plate		
21	XBBS730P04000		AA		C	Screw(3x4)		
22	RPLU-0035QSPZ		AL		B	Solenoid		
23	MSPRC1318FCZ1		AA		C	Manual paper feed spring B		
24	PTME-0035QSZZ		AC		C	PS roller pawl		
25	RPLU-0002QSPZ		AN		B	Solenoid		
26	PTME-0003QSZZ		AD		C	Roller pawl		
27	DHA i-0514QSPZ		AG		C	Main motor harness		
(Unit)								
901	CPLTM0042RS60		BH		E	Main drive unit	[Except No.27]	

11 Drive unit

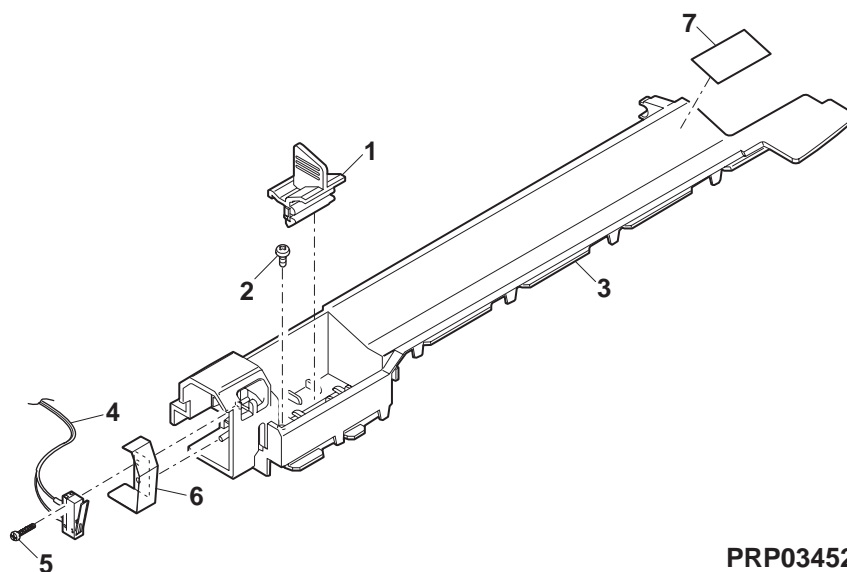


PRP03451

12 Multi manual paper feed cover unit

NO.	PARTS CODE	Inter-change	PRICE RANK	NEW MARK	PART RANK	DESCRIPTION	TR No.	Effective time
1	CCLEZ0005RS51		AQ		A	Charger cleaner unit		
2	XEBS730P08000		AC		C	Screw(3×8)		
3	PCOVP0023QSJ1		AH		D	Multi upper cover		
4	CSW-M0016RS51		AG		B	Side door detect switch unit		
5	XEPS720P10000		AA		C	Screw(2×10)		
6	MSPRP0110QSZ2		AC		C	Door switch spring		
7	PSHEZ0075QSZZ		AC		C	Multi upper guide sheet		

12 Multi manual paper feed cover unit

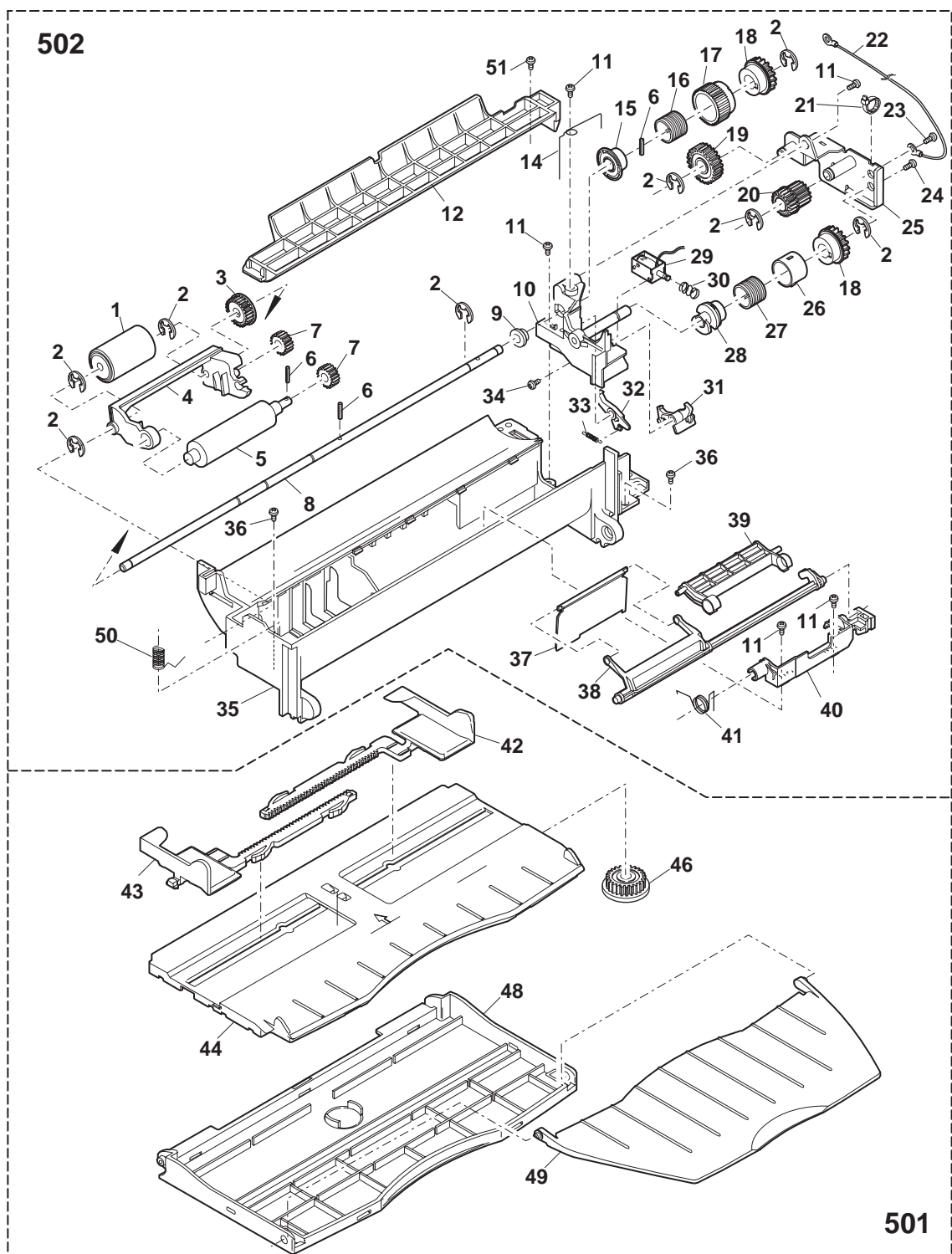


PRP03452

13 Multi manual paper feed unit

[illegible]

13 Multi manual paper feed unit

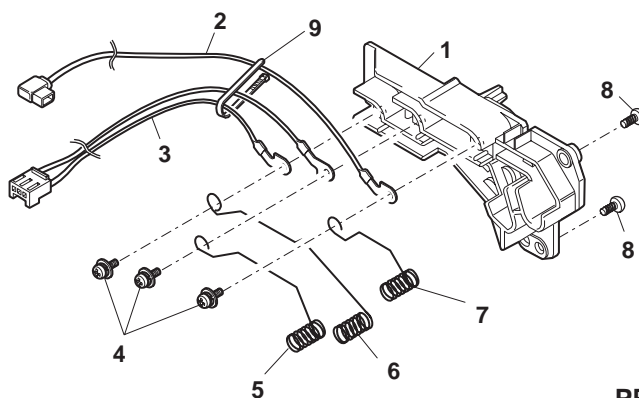


PRP03453

14 Socket holder unit

NO.	PARTS CODE	Inter-change	PRICE RANK	NEW MARK	PART RANK	DESCRIPTION	TR No.	Effective time
1	LHLDZ0009QSDZ		AG		C	High voltage interface holder		
2	CHAI-0515RS51		AH		C	MC harness unit		
3	CHAI-0273RS51		AN		C	GB-MCFB harness unit		
4	XBPSN30P06ES0		AB		C	Screw(3x6ES)		
5	MSPRC0371QSZZ		AC		C	High voltage terminal spring		
6	MSPRC0372QSZZ		AD		C	High voltage terminal spring		
7	MSPRC0370QSZZ		AC		C	High voltage terminal spring		
8	XEBS730P08000		AC		C	Screw(3x8)		
9	LBNDJ0013FCZ1		AE		C	Wire band		

14 Socket holder unit

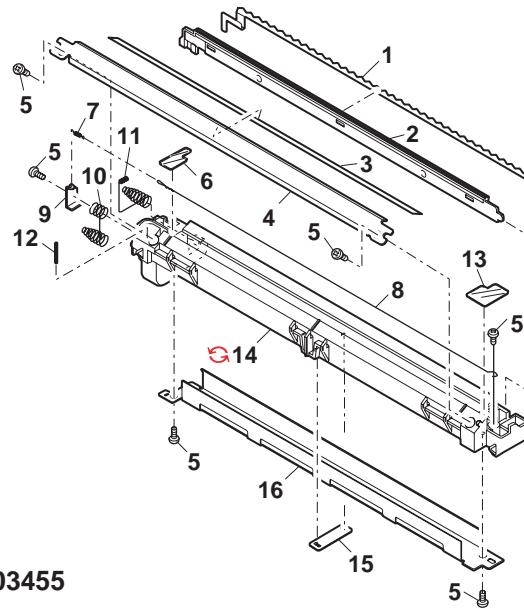


PRP03454

15 TC case unit

NO.	PARTS CODE	Inter-change	PRICE RANK	NEW MARK	PART RANK	DESCRIPTION	TR No.	Effective time
1	PSHEZ0018QSZZ		AF		C	Discharge plate sheet		
2	PGIDM0011QSZZ		AE		D	Separator guide		
3	PSHEP0019QSZ1		AC		C	TC sheet		
4	PGIDH0025QSZ1		AG		D	TC front guide		
5	XEBS730P06000		AA		C	Screw(3x6)		
6	PSHEP0021QSZZ		AA		C	TC cover sheet R		
7	MSPRT0513FCZ1		AA		C	MC tension spring		
8	DWIR-0466CSZZ		BE		B	Charger wire		
9	QSLP-0007QSZZ		AC		C	TC electrode plate		
10	MSPRC0027QSZZ		AC		C	TC electrode spring		
11	MSPRC0028QSZZ		AC		C	BC electrode spring		
12	MSPRC0051QSZ1		AA		C	Transfer front guide earth spring		
13	PSHEP0020QSZZ		AB		C	TC cover sheet F		
14	LHLDZ0010QSZ1		AL		C	TC holder		
14	LHLDZ0010QSZZ	1	AL		C	TC holder		08/04
15	LFIX-0004QSZZ		AC		C	Holder fixing plate		
16	PCASZ0002QSZZ		AL		D	TC case		
	(Unit)							
901	CHLDZ0010RS52		AU		E	Transfer unit		

15 TC case unit

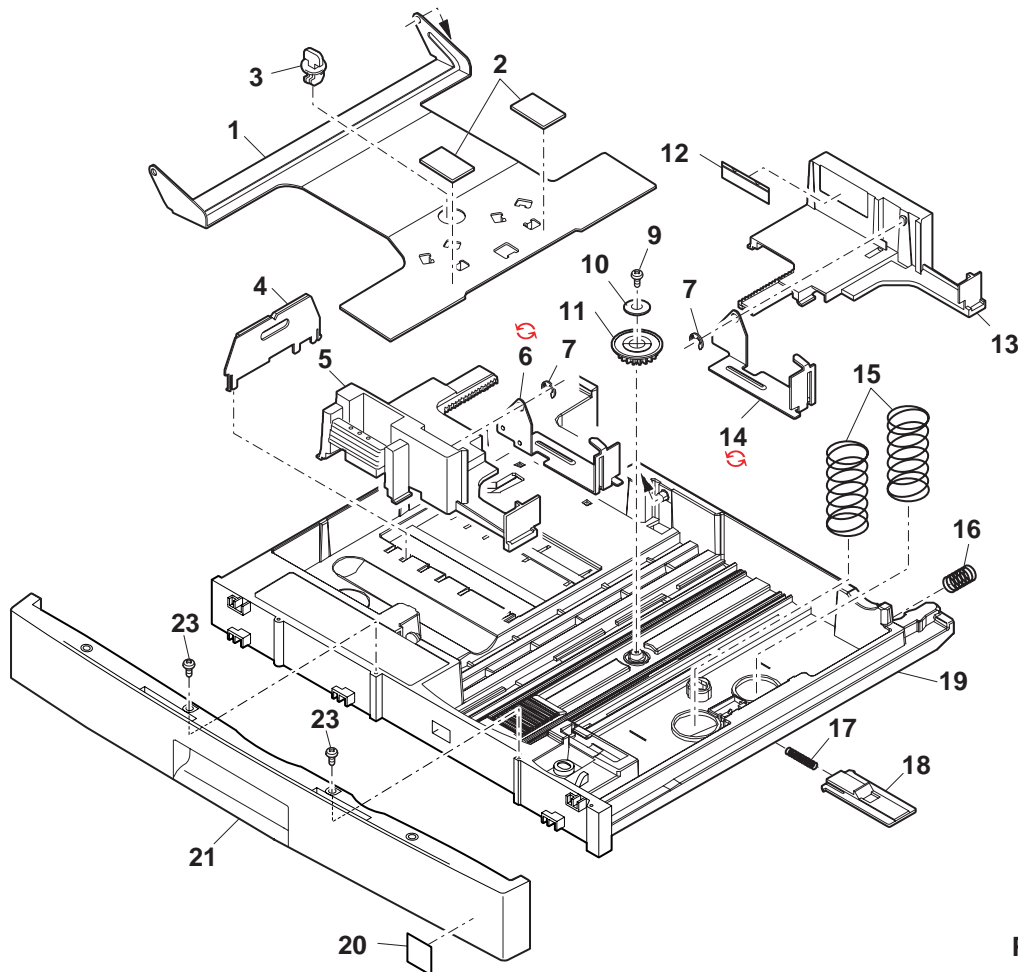


PRP03455

16 250 sheets tray

NO.	PARTS CODE	Inter-change	PRICE RANK	NEW MARK	PART RANK	DESCRIPTION	TR No.	Effective time
1	LPLTM5106FCZZ		AR		C	Rotation plate 250		
2	PSHEZ4142FCZZ		AC		C	Turning plate sheet		
3	LHLDW1226FCZZ		AB		C	Turn fastener		
4	LPLTM2642FCG2		AD		C	Tray rear edge plate		
5	LPLTP5107FCZ2		AG		C	250 sheets tray side plate F		
6	PTME-0027QSZ4		AL		C	250 sheets tray pawl F		
7	PTME-0037QSZZ	5	AL		C	250 sheets tray pawl F [With No.14]	DCE703	08/01 R/C
8	XRESP40-06000		AA		C	E-ring(E4)		
9	XEBS730P08000		AC		C	Screw(3x8)		
10	LX-WZ2028SCPZ		AA		C	Washer(φ12)		
11	NGERH0193FCZZ		AB		C	Manual paper feed gear		
12	TLABZ0546QSZZ		AB		D	Indication label		
13	LPLTP5108FCZ2		AG		C	250 sheets tray side plate R		
14	PTME-0028QSZZ		AL		C	250 sheets tray pawl R		
15	PTME-0038QSZZ	5	AL		C	250 sheets tray pawl R [With No.6]	DCE703	08/01 R/C
16	MSPRC0108QSZZ		AC		C	250 sheets tray spring		
17	MSPRC1873FCZ1		AB		C	Tray spring		
18	MSPRC1145FCZZ		AA		C	Stopper spring		
19	LSTPP0161FCZ1		AB		C	Rotation plate stopper		
20	GCASP0008QSZZ		AZ		D	250 tray case		
21	TLABZ5148FCZZ		AC		D	Energy star label [Europe,Russia]		
22	JHNDP0009QSZZ		AS		D	Tray cover		
23	XEBS740P12000		AA		C	Screw(4x12)		
	(Unit)							
901	CCASP0008RS51		BF		E	250 sheets tray unit(Except No.20)		

16 250 sheets tray

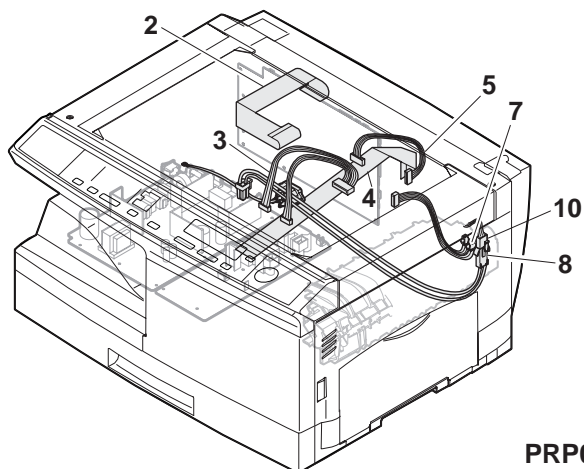


PRP03456

17 Harness

NO.	PARTS CODE	Inter-change	PRICE RANK	NEW MARK	PART RANK	DESCRIPTION	TR No.	Effective time
2	DHA i - 0 2 6 8 Q S Z 4		AG		C	CCD-MCU harness		
3	DHA i - 0 5 2 5 Q S P Z		AX		C	PS harness		
4	DHA i - 0 5 1 3 Q S P Z		AF		C	OP-MCU harness		
5	DHA i - 0 5 1 4 Q S P Z		AG		C	Main motor harness		
7	DHA i - 0 2 8 7 Q S Z Z		AF		C	PPD2 interface harness		
8	DHA i - 0 5 3 6 Q S P Z		AL		C	Heater lamp harness 1 200		
10	DHA i - 0 5 3 7 Q S P Z		AL		C	Heater lamp harness 2 200		

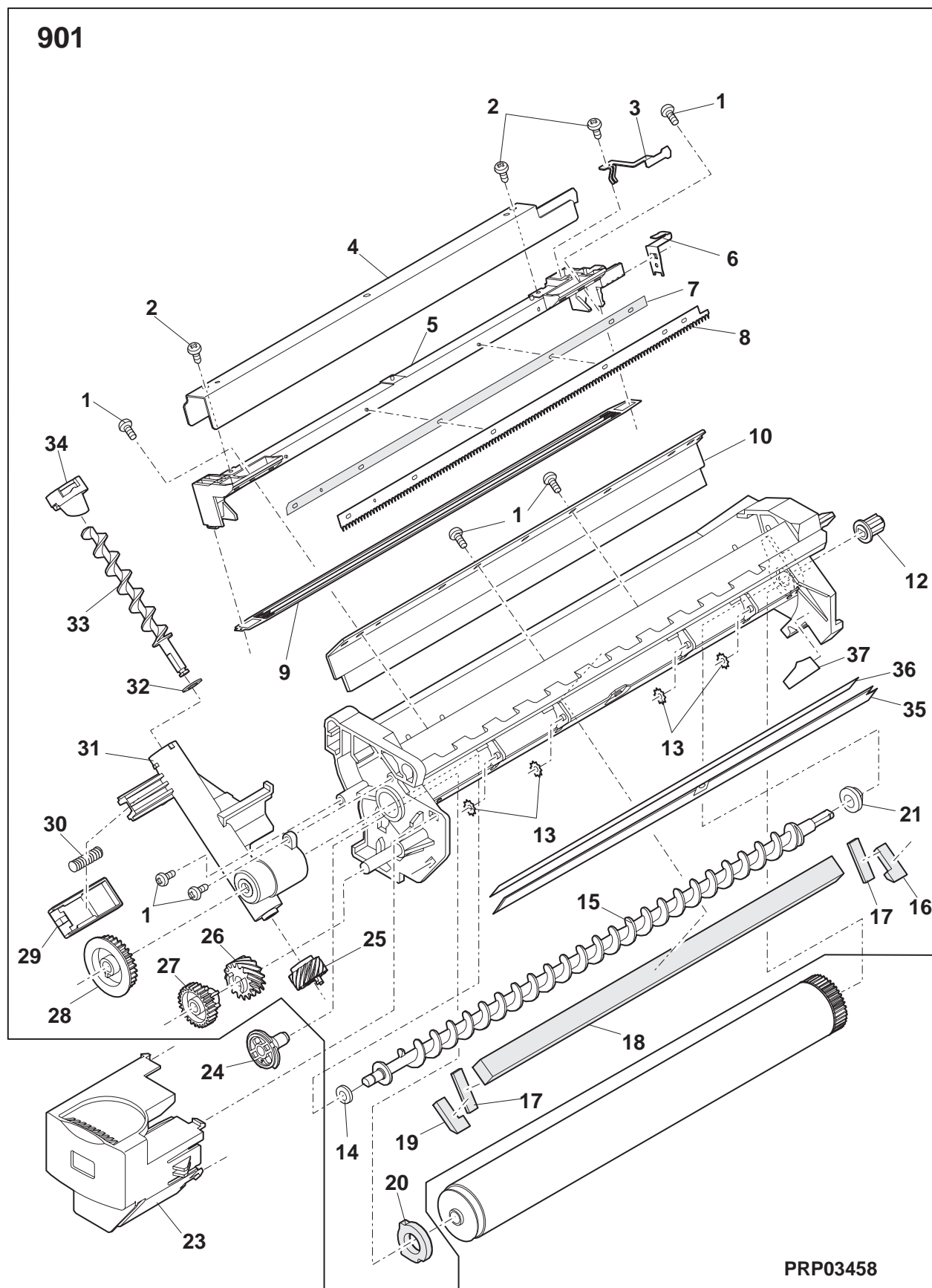
17 Harness



PRP03457

18 Process unit

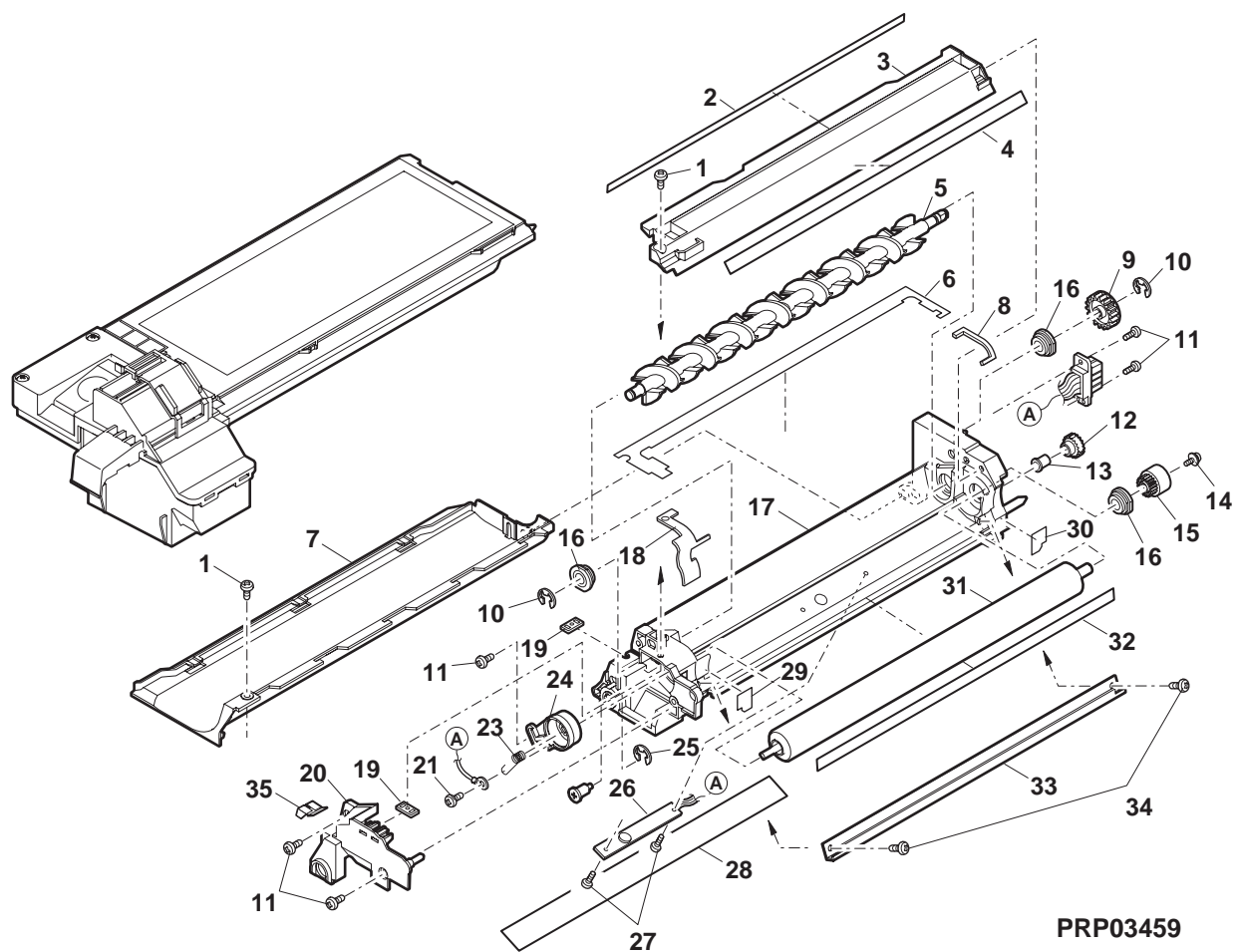
[illegible]



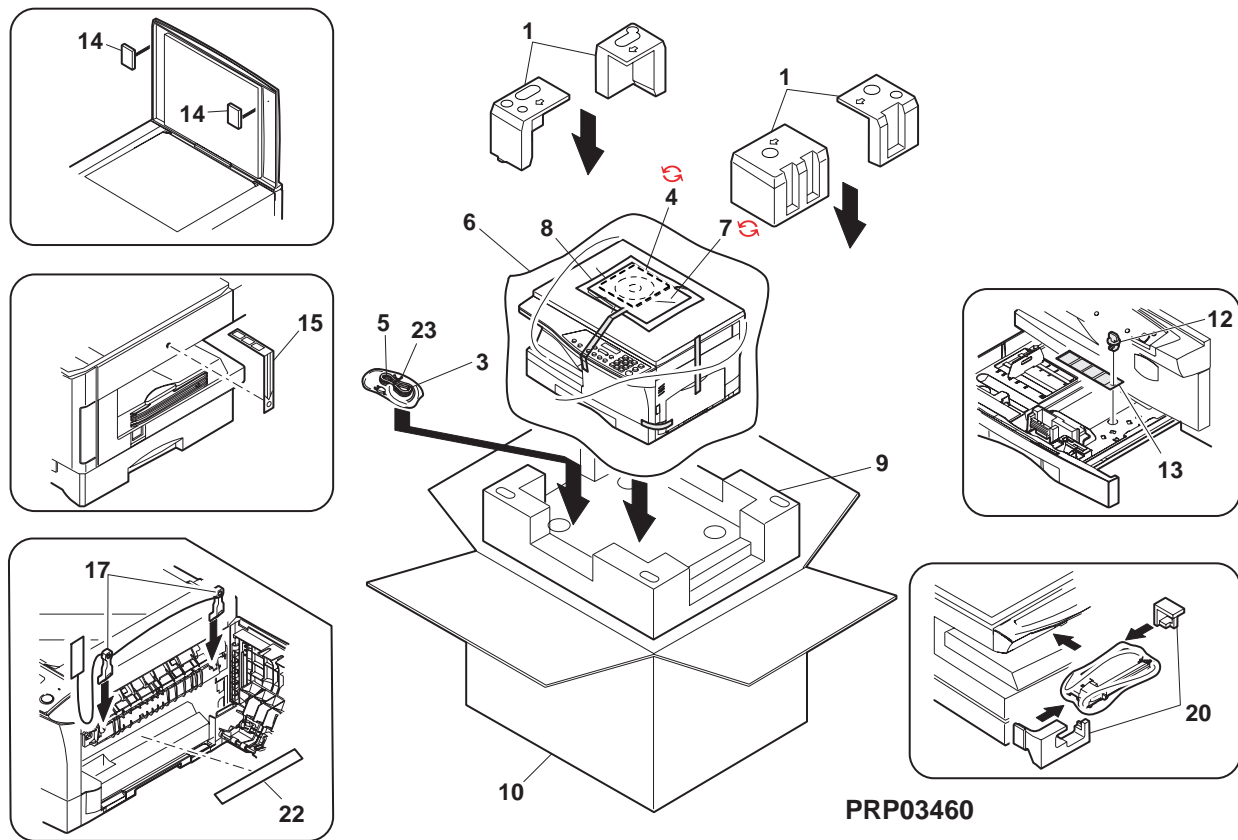
19 DV cartridge unit

[illegible]

19 DV cartridge unit



20 Packing material & accessories



SHARP

COPYRIGHT © 2008 BY SHARP CORPORATION

All rights reserved.

Printed in Japan.

No part of this publication may be reproduced,
stored in a retrieval system, or transmitted.

In any form or by any means,
electronic, mechanical, photocopying, recording, or otherwise,
without prior written permission of the publisher.

SHARP CORPORATION
Digital Document System Group
CS Promotion Center
Yamatokoriyama, Nara 639-1186, Japan
2008 April Printed in Japan ⓘ