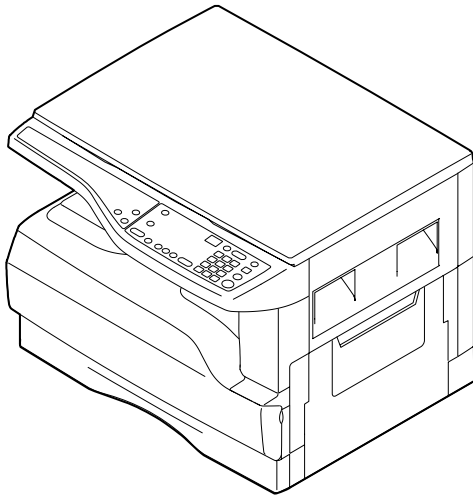


# SHARP PARTS GUIDE

CODE:00ZAR1118/P1E



## DIGITAL COPIER

### MODEL **AR-1118**

#### CONTENTS

- |                                    |                                   |
|------------------------------------|-----------------------------------|
| 1 Exteriors                        | 14 Delivery frame unit            |
| 2 Operation panel section          | 15 TC case unit                   |
| 3 Side door unit                   | 16 250 sheets tray unit           |
| 4 Optical unit                     | 17 Packing material & Accessories |
| 5 2nd,3rd mirror unit              | ■ Index                           |
| 6 Middle frame unit                |                                   |
| 7 Process unit                     |                                   |
| 8 DV cartridge unit                |                                   |
| 9 Fusing unit                      |                                   |
| 10 Main driving unit               |                                   |
| 11 Base plate unit 1               |                                   |
| 12 Base plate unit 2               |                                   |
| 13 Manual paper feeding multi unit |                                   |

The definition of each Rank is as follows and also noted in the list

Rank B : Performance/function parts (sensors, clutches, and other electrical parts), consumable parts

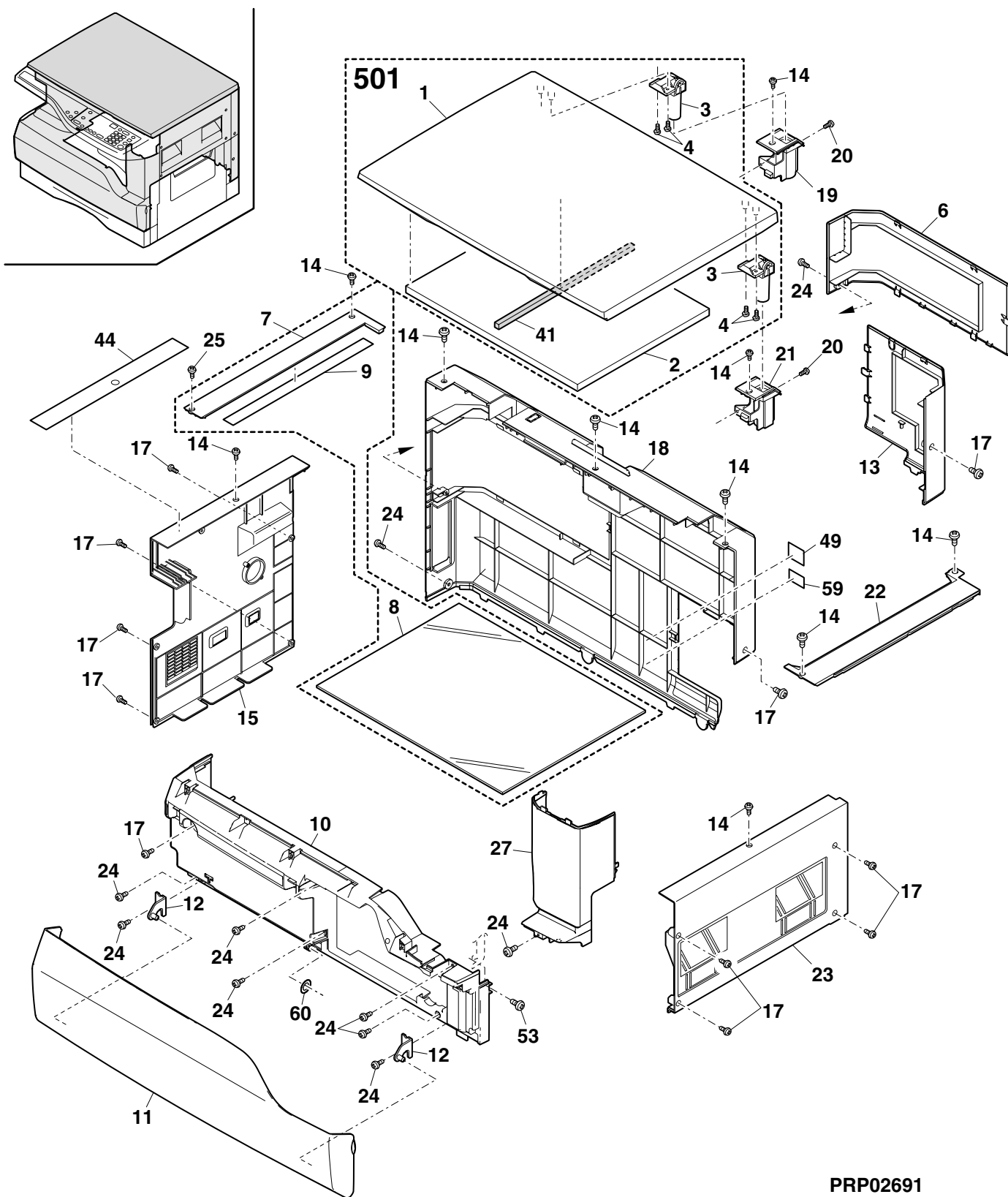
Rank D : Preparation parts (External fitting, packing, parts packed together)

Because parts marked with "△" is indispensable for the machine safety maintenance and operation, it must be replaced with the parts specific to the product specification.

- Other than this Parts Guide, please refer to documents Service Manual(including Circuit Diagram)of this model.
- Please use the 13 digit code described in the right hand corner of front cover of the document, when you place an order.
- For U.S. only-Use order codes provided in advertising literature. Do not order from parts department.

[illegible]

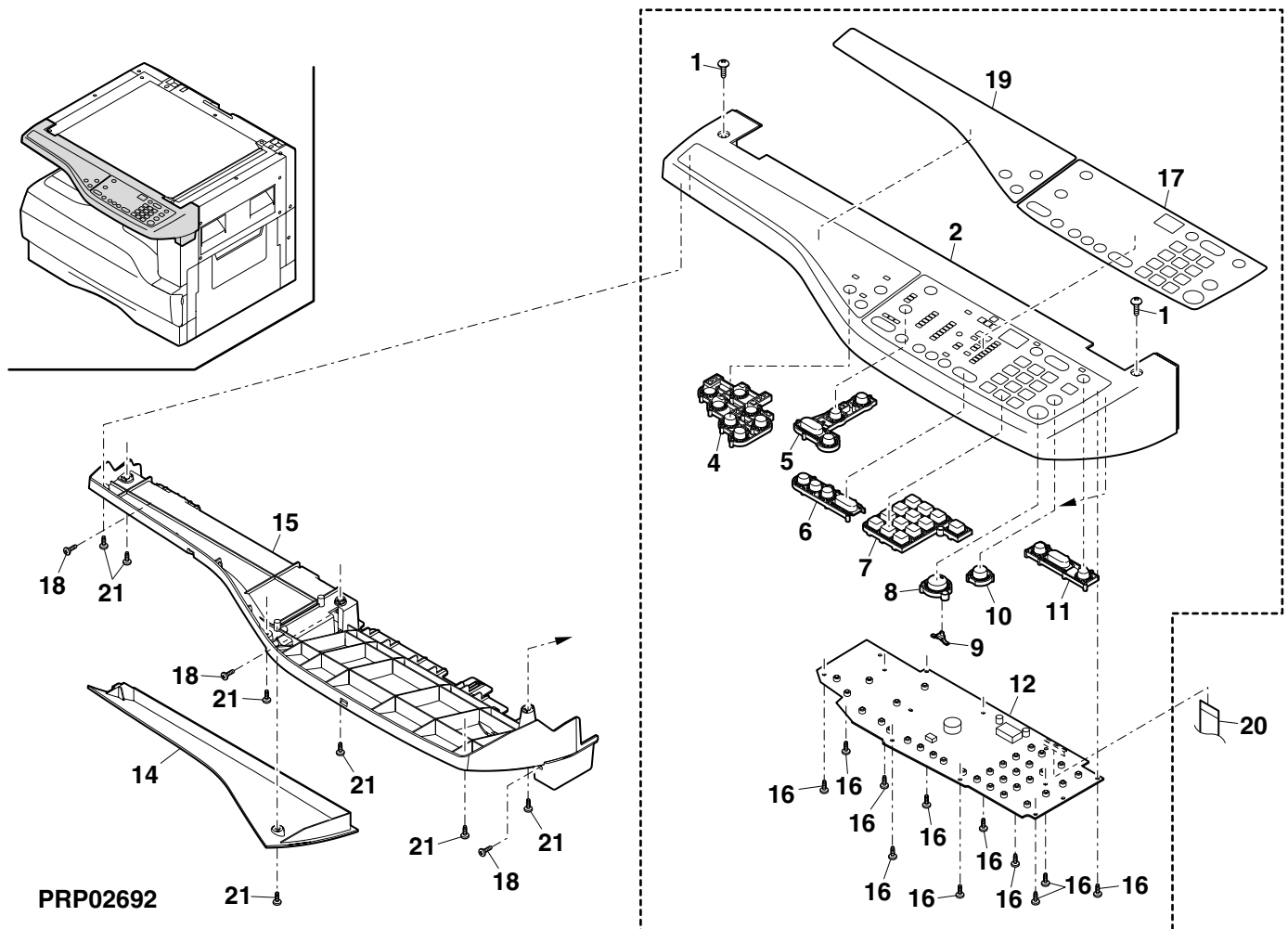
# 1 Exteriors



## 2 Operation panel section

NO.	PARTS CODE	PRICE RANK	NEW MARK	PART RANK	DESCRIPTION
1	LX-BZ0750FCPZ	AA		C	Screw(3×6)
2	GCAB-0073QSZZ	AW		D	Operation panel cabinet
4	JBTN-0066QSZZ	AH		C	Special function key
5	JBTN-0065QSZZ	AE		C	Mode select key
6	JBTN-0064QSZZ	AF		C	Magnification key
7	CBTN-0060QSO1	AK		C	Ten key
8	CBTN-0061QSO1	AE		C	Start key AS
9	PFI LZ0012QSZZ	AC		C	Start key LG
10	CBTN-0062QSO1	AF		C	CA key
11	JBTN-0063QSZZ	AE		C	Zoom key
12	CPWBF0159QSE3	BE		E	Operation PWB
14	GCOV-0050QSZZ	AN		D	Operation panel cover
15	GCAB-0067QSZZ	AX		D	Operation panel bottom
16	XEBS730P08000	AC		C	Screw(3×8)
17	CPNLH0026QSZ3	BA		D	Main Deco. panel
18	XHBS730P08000	AB		C	Screw(3×8)
19	CPNLH0033QSO1	AT		D	SIMP Deco. panel
20	DHAI-0324QSZZ	AH		C	OP-MCU FFC harness
21	XEBS730P08000	AC		C	Screw(3×8)

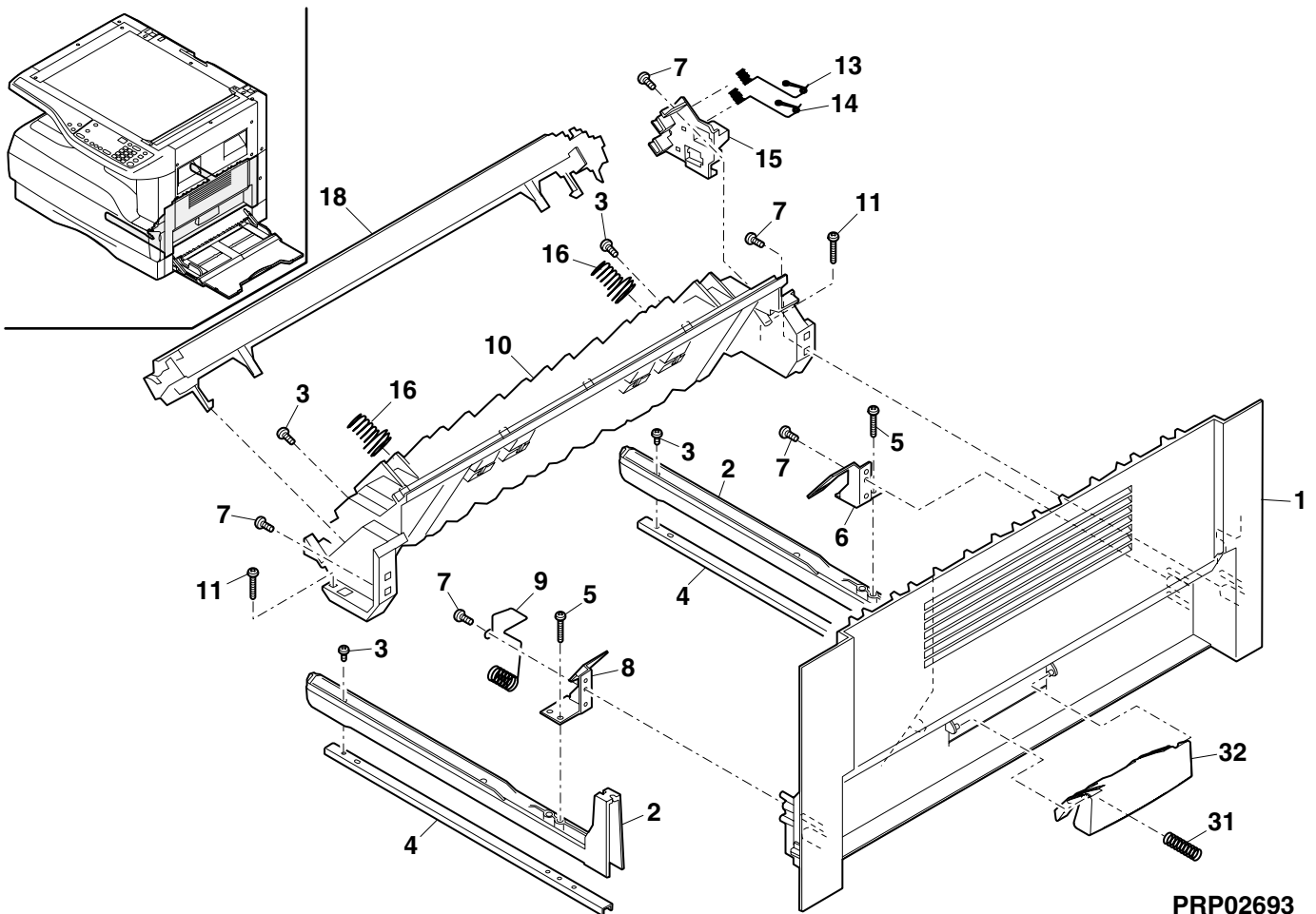
## 2 Operation panel section



### 3 Side door unit

NO.	PARTS CODE	PRICE RANK	NEW MARK	PART RANK	DESCRIPTION
1	GDOR-0004QSZ1	AQ		D	Right door
2	LRALP0004QSZ2	AH		C	Right door rail
3	XHBS730P10000	AD		C	Screw(3×10)
4	LPLTM0092QSZZ	AF		C	Rail reinforce plate
5	XHBS730P14000	AA		C	Screw(3×14)
6	LPLTM0091QSZZ	AE		C	Inner reinforce plate R
7	XEBS730P10000	AC		C	Screw(3×10)
8	LPLTM0090QSZZ	AE		C	Inner reinforce plate F
9	MSPRC0085QSZZ	AE		C	TC case GND spring
10	LFRM-0016QSZ5	AQ		C	Right door inner N
11	XHBS730P16000	AA		C	Screw(3×16)
13	MSPRC0084QSZ1	AD		C	BC I/F spring
14	MSPRC0083QSZ1	AD		C	TC I/F spring
15	LHLDZ0033QSZ1	AF		C	TC terminal I/F holder
16	MSPRC0082QSZ1	AC		C	Pressure spring
18	CHLDZ0030RS55	AY		E	TC case unit
31	MSPRC0319QSZZ	AB		C	Right door knob spring
32	JKNBZ0008QSZZ	AE		C	Right door knob
	(Unit)				
901	CDOR-0004RS51	BC		E	Side door unit(Without No.16,18)

### 3 Side door unit

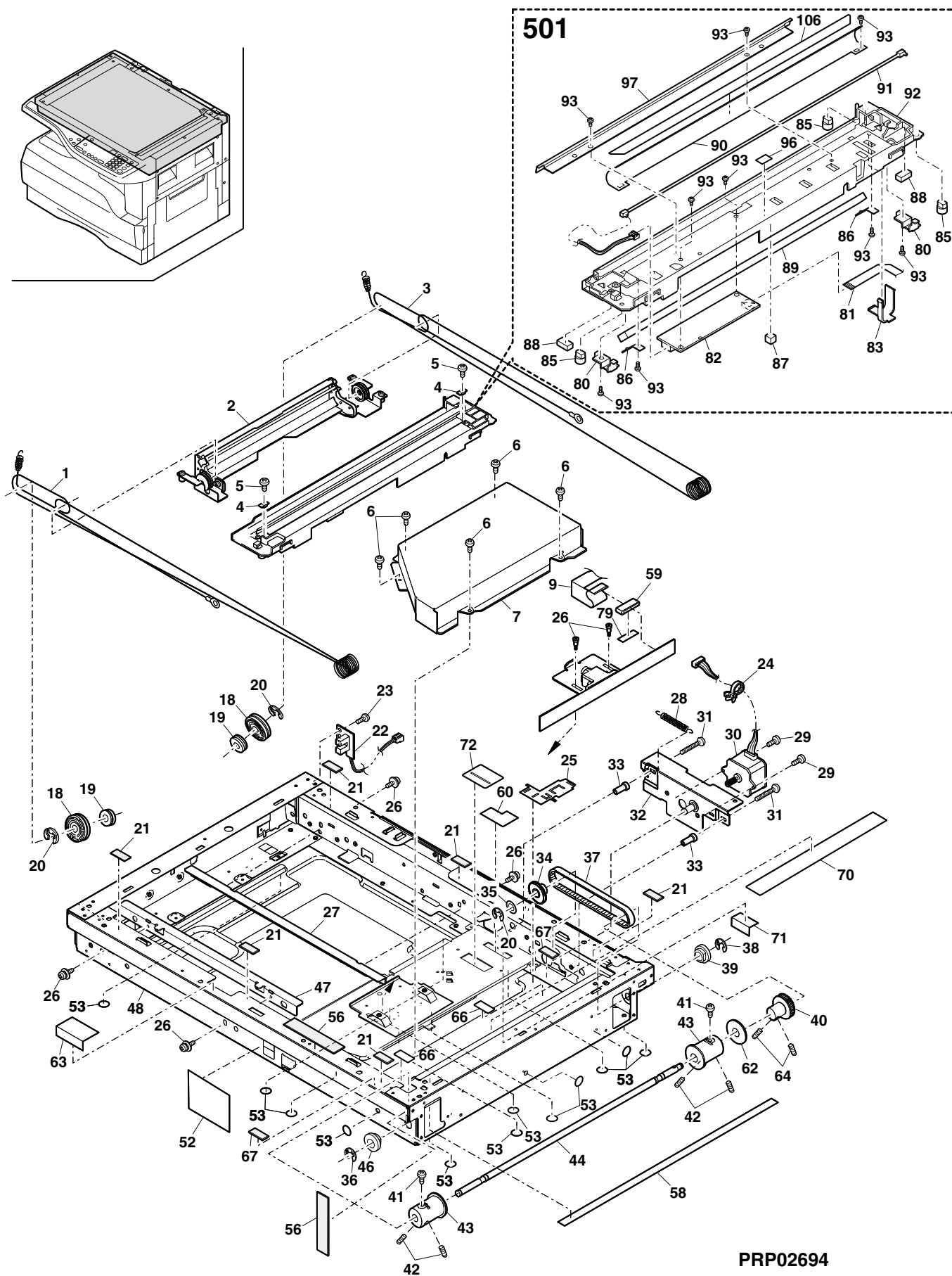


PRP02693

#### 4 Optical unit

[illegible]

# 4 Optical unit



PRP02694

## 5 2nd,3rd mirror unit

NO.	PARTS CODE	PRICE RANK	NEW MARK	PART RANK	DESCRIPTION
1	LHLDZ0044QSZ2	AN		C	2nd,3rd mirror holder
3	XBPS740P06KS0	AB		C	Screw(4x6KS)
4	NPLYZ0017QSZZ	AE		C	W pulley
5	LHLDZ0013QSZZ	AD		C	CL guide holder
7	MSLi-0138FCZZ	AC		E	Slider
8	LX-BZ0335FCPZ	AB		C	Screw(4x6)(Red)
9	CPLTM0156QS03	AH		C	Pulley fixing plate R
10	PCUSS0009QSZZ	AA		C	MB-B cushion R
11	LFiX-0284FCZZ	AC		C	2nd,3rd mirror fixing plate F
12	PMiR-0008QSZ1	BA		B	2nd,3rd mirror
13	CPLTM0155QS03	AH		C	Pulley fixing plate F
14	PCUSS0201FCZZ	AA		C	MB-B cushion
15	PSPA Z0011QSZZ	AD		C	Mirror spacer
16	PMLT-0084QSZZ	AB		C	2nd,3rd mirror cushion
17	LX-WZ0001GCZZ	AB		C	Washer
	(Unit)				
901	CMiR-0008QSZ37	BA		E	2nd,3rd mirror unit

## 6 Middle frame unit

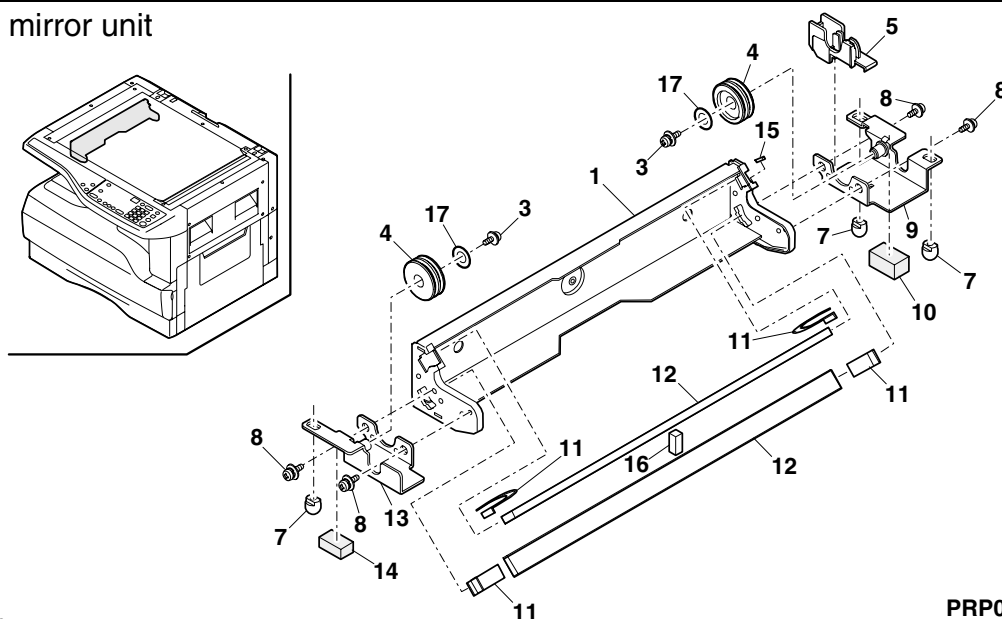
NO.	PARTS CODE	PRICE RANK	NEW MARK	PART RANK	DESCRIPTION
1	XEPS723P12000	AA		C	Screw(2.3x12)
2	CSW-M0007RS55	AS		B	Interlock switch unit
3	NCPL-0007QSZ1	AC		C	Hopper coupling
4	MSPRC0024QSZZ	AA		C	Hopper spring
5	RMOTD0035QSPZ	AX		B	Toner motor
6	XEBS730P10000	AC		C	Screw(3x10)
7	DUNTK0343RS12	BR		E	LSU[Include No.101]
8	DHAI-0322QSZZ	AS		C	DEV harness
9	XBPS730P06ES0	AA		C	Screw(3x6ES)
10	CHAI-0109RS52	AN		C	GB-MCFB harness unit
11	CHAI-0107RS52	AM		C	MC harness unit
12	MSPRD0104QSZZ	AC		C	HV terminal spring (case)
13	MSPRD0103QSZZ	AC		C	HV terminal spring (grid)
14	MSPRD0102QSZZ	AC		C	HV terminal spring (saw)
15	LHLDZ0038QSZ1	AH		C	High voltage terminal holder
16	XEBS730P08000	AC		C	Screw(3x8)
18	XEBS730P10000	AC		C	Screw(3x10)
21	LHLDZ0039QSZZ	AE		C	High voltage terminal holder TC
22	LPLTM0067QSZZ	AC		C	TC terminal plate
23	XEBS730P06000	AA		C	Screw(3x6)
24	DHAI-0106QSZ2	AK		C	BC harness
25	DHAI-0108QSZ1	AH		C	TC harness
26	MSPRC0278QSZZ	AC		C	PS pressure spring
27	XRESP40-06000	AA		C	E type ring(E4)
28	NSFTZ0021QSP1	AN		C	PS roller shaft
29	NKOM-0001QSZZ	AD		C	PS collar(φ12)
30	MSPRD0139QSZZ	AB		C	PS earth spring
31	XEBS730P06000	AA		C	Screw(3x6)
33	LBOSZ1508FCZZ	AG		C	Cam boss A2
34	PPiPP0174FCZZ	AC		C	Pipe C
35	MSPRC0106QSZZ	AF		C	PS clutch spring
36	XPSSJ20-07000	AA		C	Spring pin(φ2-7)
37	NGERH0062QSZZ	AK		C	Clutch gear(32T)
38	NBRGC0018QSZZ	AD		C	Bearing E
39	XRESP60-08000	AA		C	E type ring(E6)
40	NROLP0032QSP2	AT		C	PS transport roller
41	JKNBZ0010QSZZ	AD		C	PS knob
42	XBPS730P10KS0	AB		C	Screw(3x10KS)
46	LFRM-0024QSZ3	BC		C	Middle frame
47	LPI NS0301FCZZ	AD		C	DV guide pin
49	PSHEZ0056QSZZ	AC		C	PS rear guide sheet
51	LANGT0003QSZ1	AC		C	SRU fixing angle
52	LX-BZ0046QSZZ	AA		C	Screw(3x6)
53	TCAUH0007QSZZ	AD		D	Laser caution label
54	LBNDJ0013FCZ1	AE		C	Cable band
55	LPLTM0149QSZZ	AD		C	Connector fixing plate
56	LX-BZ0020QSPZ	AB		C	Screw
57	DHAI-0333QSZZ	AL		C	SRU harness
60	LSTPP0014QSZZ	AC		C	Right door stopper
61	MSPRD0298QSZZ	AD		C	Stopper spring
62	LHLDZ0099QSZZ	AC		C	Stopper holder
63	DHAI-0321QSZZ	AH		C	LSU harness
64	XEPS730P14X00	AB		C	Screw(3x14X)
65	XHBS730P06000	AC		C	Screw(3x6)
66	LX-WZ0198FCZZ	AA		C	Poly slider(T=0.13)
67	LX-WZ1003HCZZ	AA		C	Poly slider(T=0.5)
68	MSPRC0339QSZZ	AD		C	PS brake spring



## 6 Middle frame unit

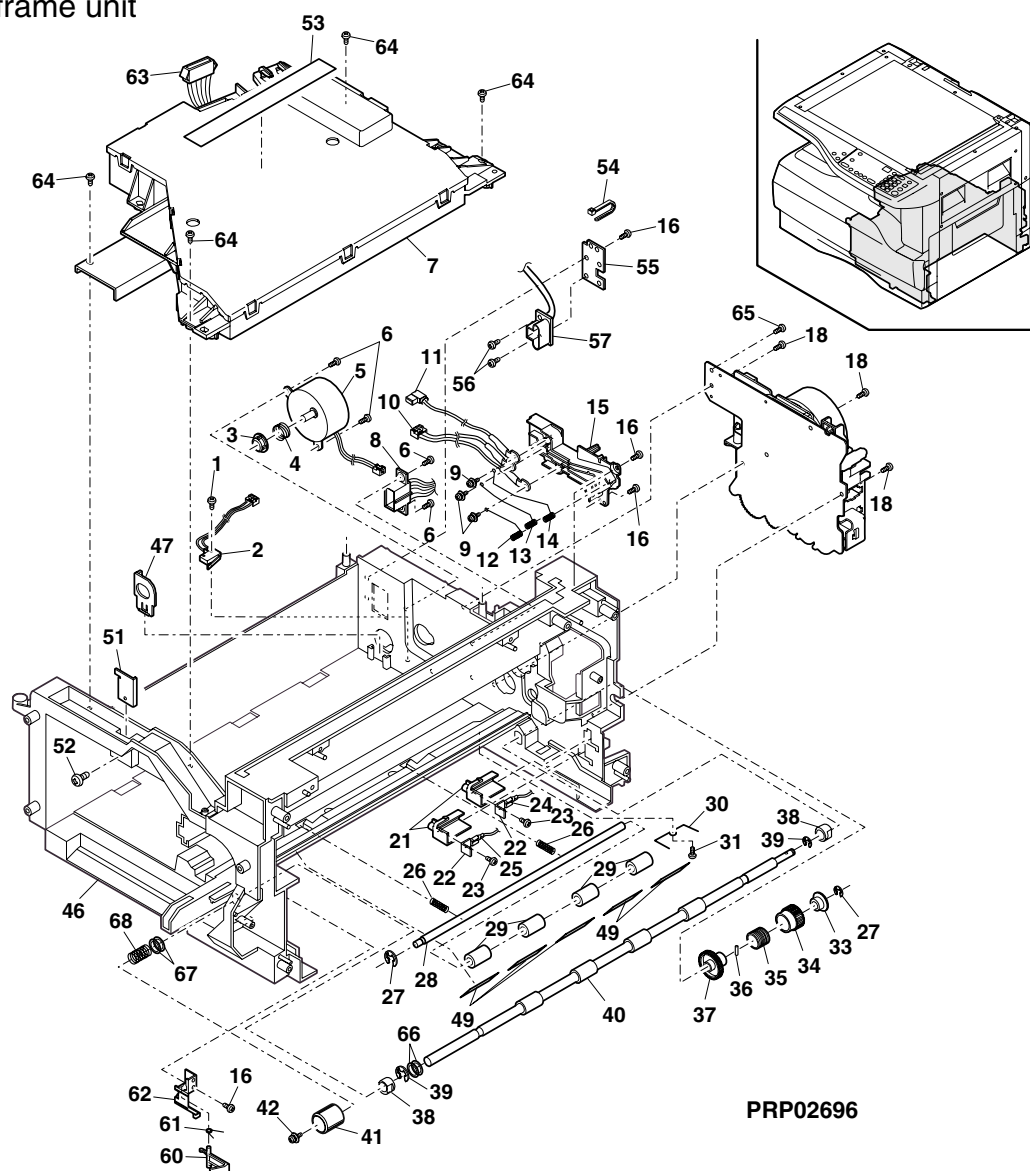
NO.	PARTS CODE	PRICE RANK	NEW MARK	PART RANK	DESCRIPTION
101	RMOTN0022QSPA	BL		B	Polygon motor[Contained in No.7]

## 5 2nd,3rd mirror unit



PRP02695

## 6 Middle frame unit



PRP02696

## 7 Process unit

NO.	PARTS CODE	PRICE RANK	NEW MARK	PART RANK	DESCRIPTION
1	XEBS730P10000	AC		C	Screw(3×10)
2	CHLDZ0035RS55	BG		E	MC holder unit
3	UCLEZ0009QS22	AQ		A	Cleaning blade
4	CFRM-0021RS6M	AY		E	Process sub unit
5	PSEL-0130QSZZ	AF		C	Seal R
6	PSEL-0129QSZZ	AF		C	Seal F
9	NCPL-0003QS21	AC		C	Screw coupling
12	LHLDZ0098QS22	AD		C	Pawl holder
14	LX-RZ0001QSZZ	AB		C	Starling(φ5)
15	PTME-0033QSZZ	AK		A	Separator pawl
16	PRNGF0106FCZ2	AC		C	Starling N2
18	NBRGP0299FCPZ	AD		C	CL bearing(M5)
19	NSFTZ0020QSZZ	AL		C	Transport screw
20	PMLT-0018QS21	AC		C	Transport screw cushion
21	PCAPH0009QSZZ	AC		C	Toner pipe cap
22	NSFTZ0019QSZZ	AE		C	Transport pipe screw
23	PSPAZ0096FCZ2	AC		C	Pipe cap spacer
24	PPiPP0005QSZZ	AM		C	Toner pipe
25	NGERH0039QSZZ	AE		C	Transport pipe gear(14T)
26	MSPRC0045QSZZ	AA		C	Toner pipe spring
27	PSHT-0004QS21	AC		C	Toner pipe shutter
28	NGERH0036QSZZ	AC		C	Transport screw gear(30T)
29	NGERH0038QSZZ	AC		C	Transport pipe gear(15T)
30	NGERH0037QSZZ	AC		C	Idle gear(26T)
31	LfiX-0007QS21	AE		C	Drum fixing plate B
32	PCOVP0093QSZZ	AE		C	Drum cover
35	PSHEP0135QS21	AB		C	MC guide sheet R
36	PSHEZ0501QSZZ	AD		C	Drum MG sheet A
37	PSHEZ0502QSZZ	AD		C	Drum MG sheet B
501	CFRM-0021RS6N	BF		E	Process frame unit

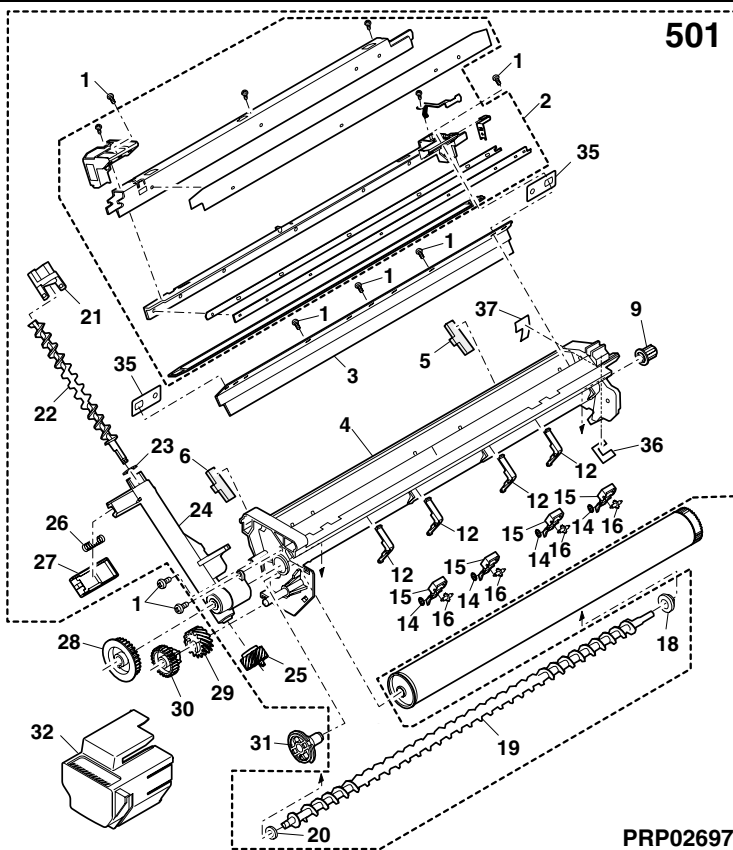
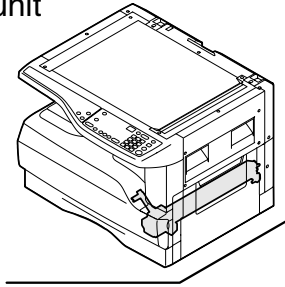
## 8 DV cartridge unit

NO.	PARTS CODE	PRICE RANK	NEW MARK	PART RANK	DESCRIPTION
1	PGiDM0088QSZZ	AP		D	Upper toner guide
2	XEBS730P08000	AC		C	Screw(3×8)
3	LX-BZ00027QSPZ	AD		C	DV fixing screw
4	PGiDM0089QS21	AQ		D	Lower toner guide
5	PSEL-0065QS21	AA		C	TG seal LUAR
6	PSEL-0066QS21	AC		C	TG seal LRAR
7	PSEL-0067QS24	AG		C	TG seal LDAR
8	PSEL-0105QSZZ	AA		C	TN seal FR
9	PSHEP0262QSZZ	AC		C	DV-UND sheet
10	XBBS740P10000	AA		D	Screw(4×10)
11	PCOVP0072QS12	AH		D	DV cover
12	PMLT-0002YS21	AC		C	DV TH cushion
13	PMLT-0005YSZZ	AB		C	DV side cushion lower
14	PBOX-0001YS13	AM		C	DV box
15	NROLP0072QSP1	AP		C	MX roller
16	PMLT-0006YSZZ	AB		C	DV side cushion R
17	NBRGC0020QSZZ	AH		C	Bearing
18	NGERH0002YSZZ	AD		B	DV gear(28T)
19	XEBS730P08000	AC		C	Screw(3×8)
20	NGERH0001YSZZ	AD		C	DV idle gear(20T)
21	NBRGC0021QSZZ	AD		C	DID bearing
22	XRESP50-06000	AA		C	E type ring(E5)
23	NGERH0145QS21	AD		B	DV gear(18T)
24	PSHEP0035YSZZ	AB		A	DV side sheet N
26	NROLM0121QSZZ	BA		B	MG roller
27	LPLTM0002YS22	AP		C	Doctor reinforce plate
28	LPLTM0001YSZZ	AN		B	Doctor
29	XBPBZ30P03000	AB		C	Screw(3×3)
30	LHLDZ0001YSZZ	AD		C	Bearing holder
31	RDTCM0017QSZZ	AY		B	ATC sensor
32	XUBUZ30P08000	AA		C	Screw(3×8)
33	MSPRK0001YSZZ	AB		C	Bias spring
34	LHLDR0072QSZZ	AC		C	MG holder
35	XBPS730P06KS0	AB		C	Screw(3×6)
36	LPLTM6022FCZ2	AC		C	M4 plate
37	PSEL-0063QSZZ	AA		C	DVS seal LRU
38	PCOVP0080QSZZ	AE		C	DV cover F
39	XEBS730P10000	AC		C	Screw(3×10)
41	XRESP30-06000	AA		C	E type ring(E3)
42	PSEL-0001YS21	AE		C	DV blade
43	PSEL-0074QSZZ	AC		C	TG seal BU
46	PSPAP0036QSZZ	AC		C	TGU spacer FL
47	PSHEP0324QSZZ	AC		C	DVB sheet
48	PSEL-0114QSZZ	AC		C	Seal F
49	PSEL-0115QSZZ	AD		C	Seal F2

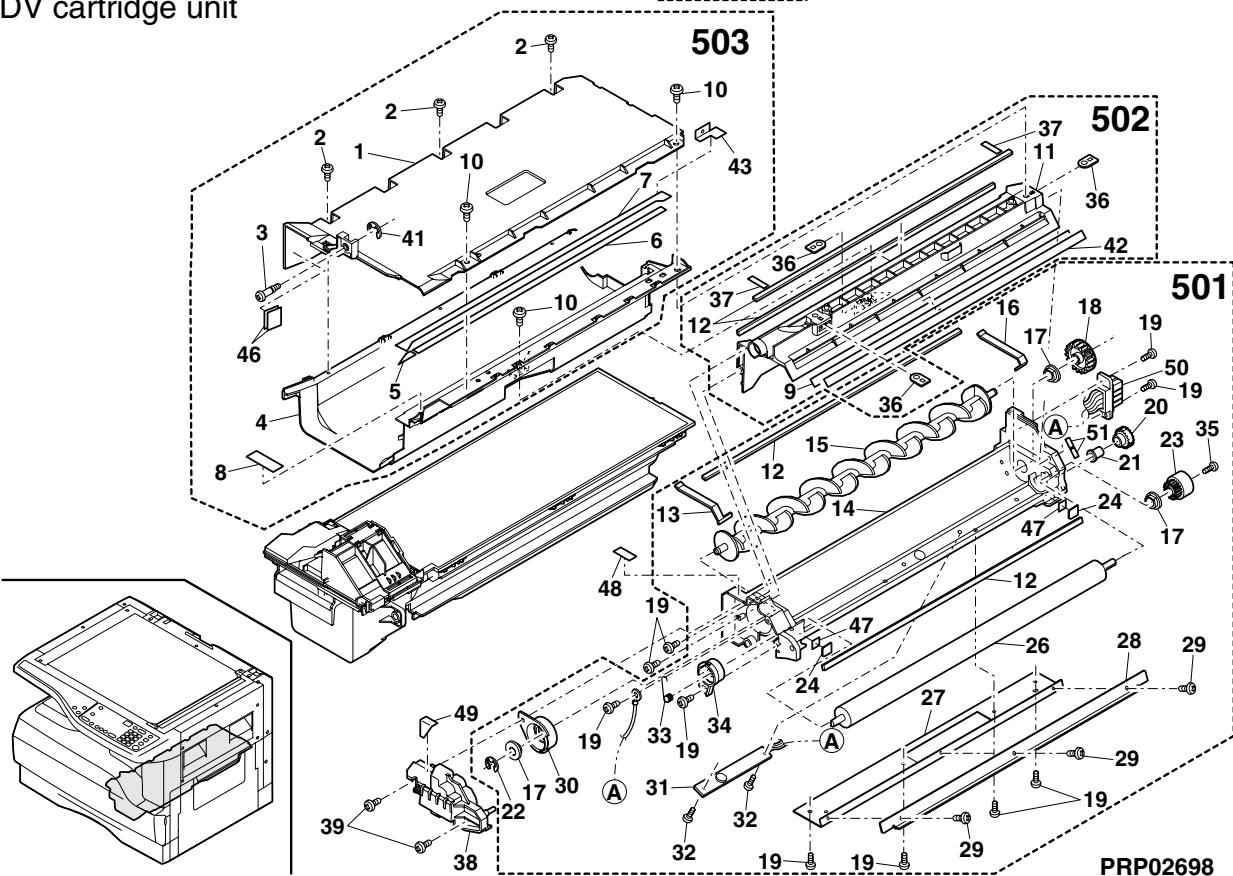
## 8 DV cartridge unit

NO.	PARTS CODE	PRICE RANK	NEW MARK	PART RANK	DESCRIPTION
50	DHAI-0313QSZZ	AH		C	Sensor harness
51	PSHEG0504QSZZ	AD		C	Sheet
501	CBOX-0001JS5H	BL		E	DV box unit
502	CCOVP0072RS56	AS		E	DV cover unit(Without No.42)
503	CGIDM0089RS53	AY		E	TN guide unit(Without No.10)

## 7 Process unit



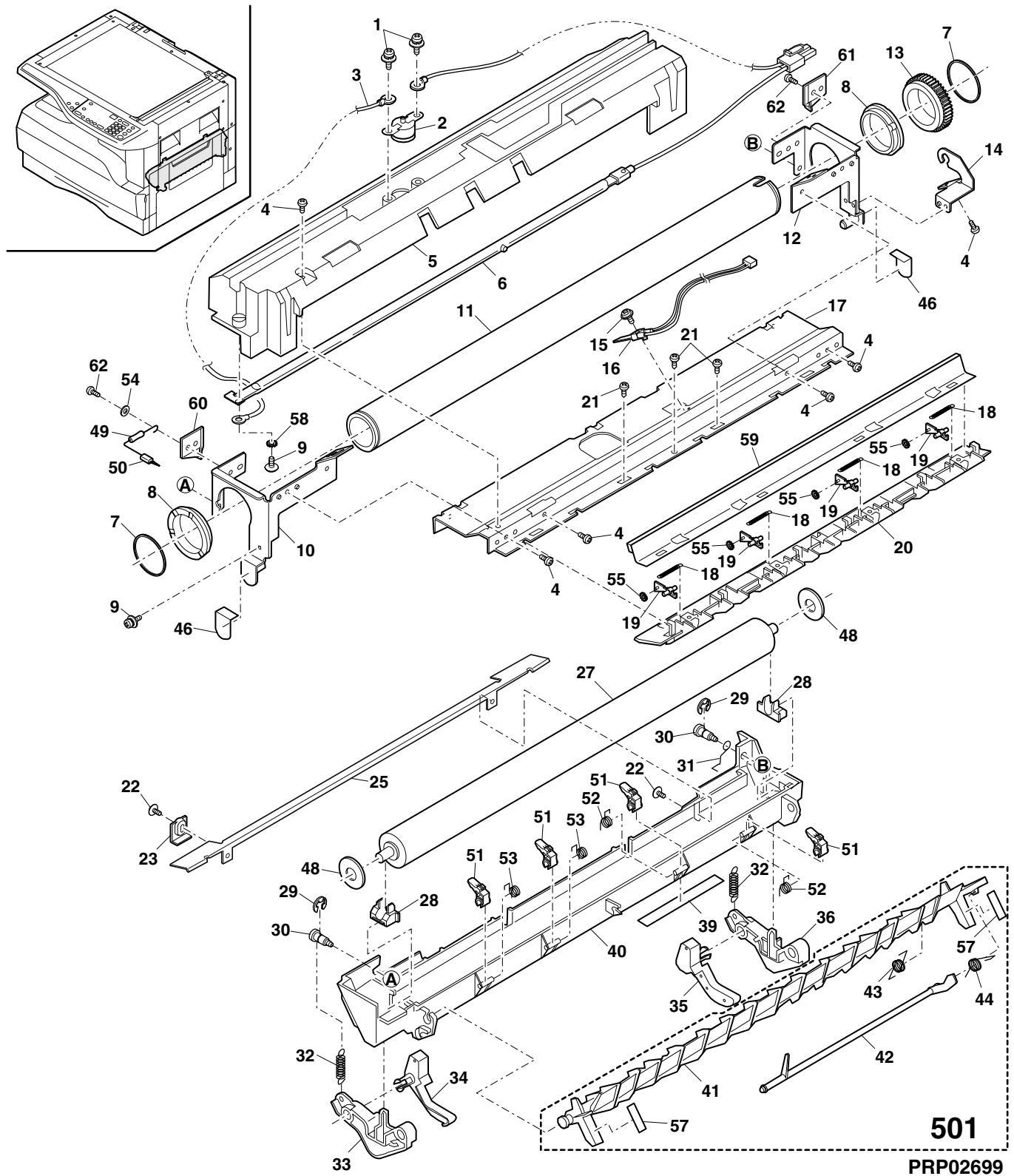
## 8 DV cartridge unit



9 Fusing unit

[illegible]

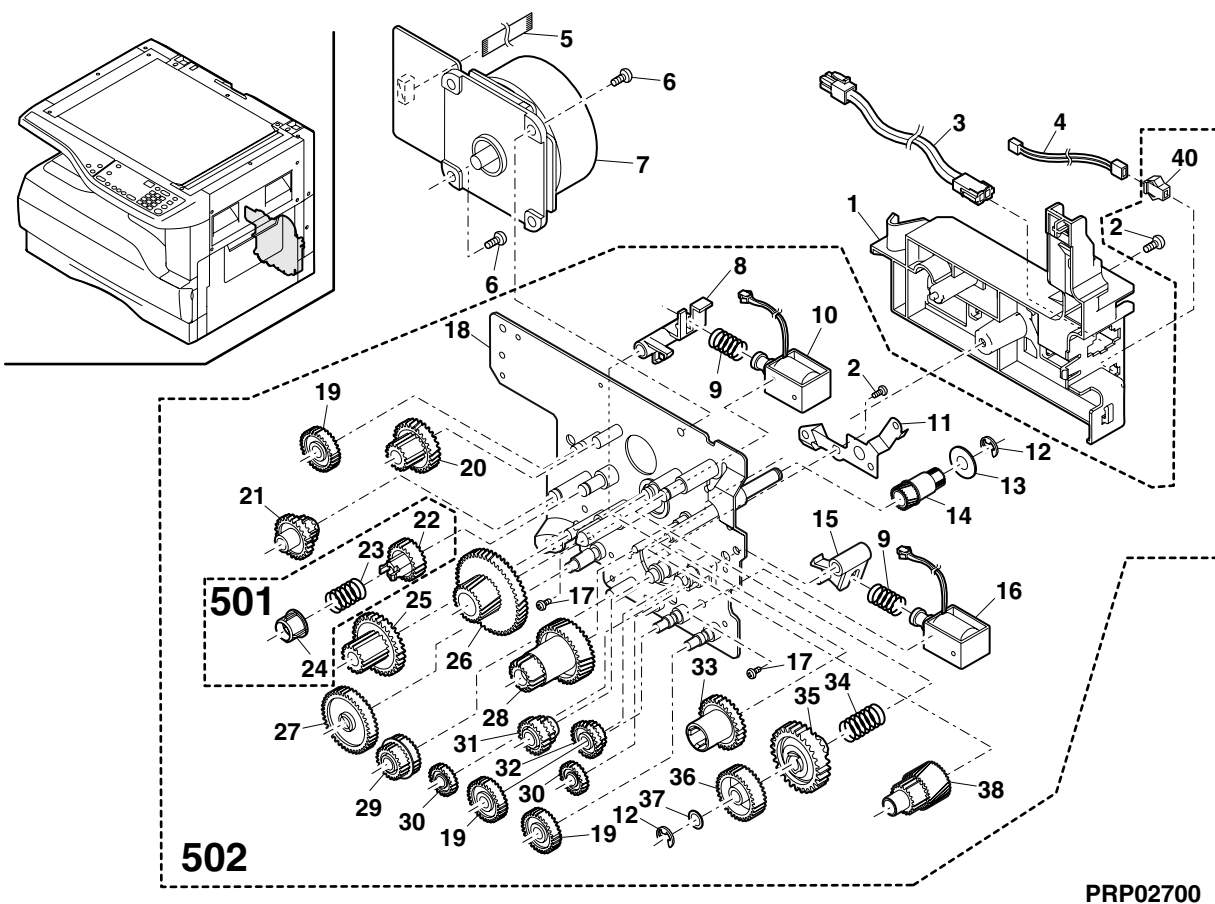
## 9 Fusing unit



10

[illegible]

10 Main driving unit



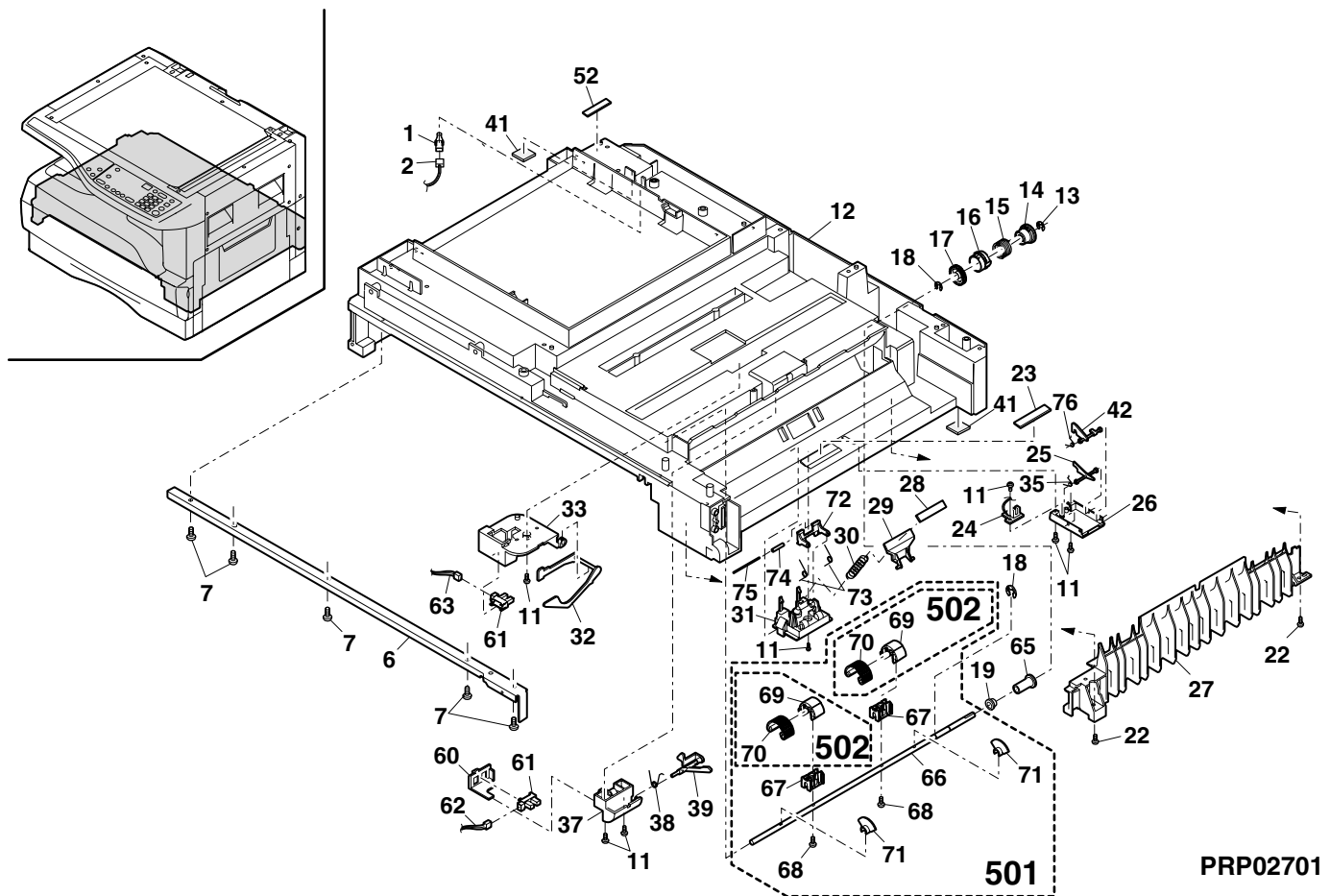
PRP02700

11 Base plate unit 1

[illegible]



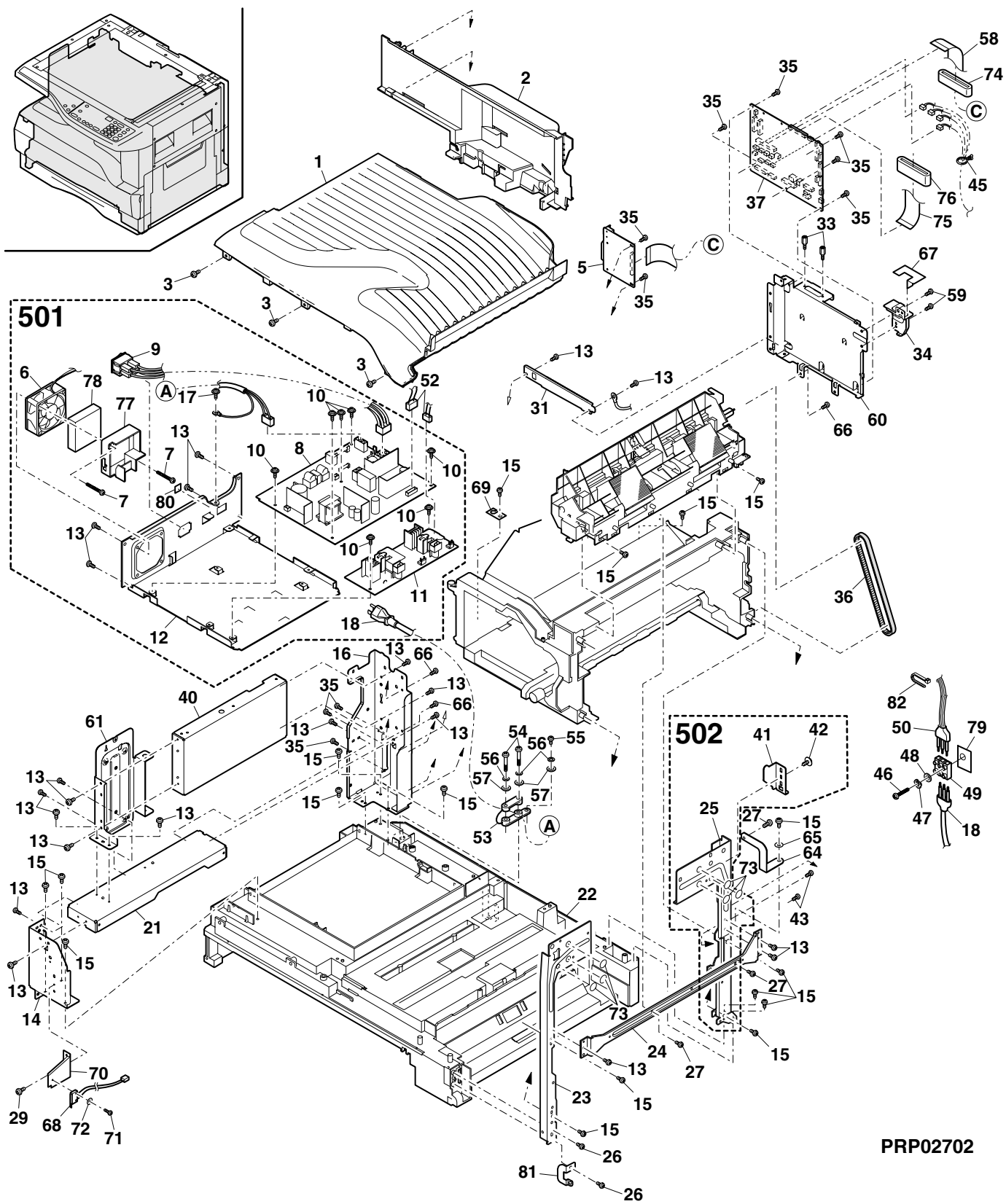
# 11 Base plate unit 1



12 Base plate unit 2

NO.	PARTS CODE	PRICE RANK	NEW MARK	PART RANK	DESCRIPTION
1	L S O U - 0 0 3 6 Q S Z 1	BB		D	Delivery tray
2	G C A B - 0 0 6 9 Q S Z Z	AT		D	Delivery rear cover
3	X E B S 7 4 0 P 1 0 0 0 0	AA		C	Screw(4×10)
5	C P W B F 0 1 1 4 Q S E 6	BA		E	GDI PWB
6	N F A N P 0 0 1 0 Q S Z Z	AS		B	PS fan
7	X B P S 7 3 0 P 3 2 K S 0	AC		C	Screw(3×32KS)
8	R D E N C 0 0 1 0 Q S 1 1	BQ		E	Low voltage power supply unit
9	D U N T K 0 3 4 7 R S 1 1	AS		E	AC switch unit
10	X B P S 7 3 0 P 0 8 K S 0	AB		C	Screw(3×8KS)
11	R D E N C 0 0 0 8 Q S 1 1	BG		E	High voltage power supply unit
12	L P L T M 0 0 8 2 Q S Z 7	AF		C	PS PWB fixing plate
13	X H B S 7 3 0 P 0 6 0 0 0	AC		C	Screw(3×6)
14	L F R M - 0 0 6 7 Q S Z Z	AK		C	Corner frame FL
15	X E B S 7 4 0 P 1 2 0 0 0	AA		C	Screw(4×12)
16	L F R M - 0 0 6 8 Q S Z 1	AQ		C	Corner frame RL
17	X B P S N 4 0 P 0 6 K 0 0	AA		C	Screw(4×6K)
18	Q A C C E R 6 2 4 Q C P Z	AW		B	AC cord(230V)
21	L P L T M 0 3 0 8 Q S Z Z	AL		C	Corner frame reinforce plate
22	G D A i - 0 0 0 2 Q S E 1	BF		C	Base plate
23	L F R M - 0 0 2 5 Q S Z 3	AH		C	Corner flame FR
24	L P L T M 0 0 9 9 Q S Z 2	AK		C	Corner frame R reinforce plate
25	L F R M - 0 0 2 6 Q S Z 2	AN		C	Corner frame RR
26	X H B S 7 3 0 P 1 4 0 0 0	AA		C	Screw(3×14)
27	X E B S 7 3 0 P 1 0 0 0 0	AC		C	Screw(3×10)
29	X H B S 7 3 0 P 0 8 0 0 0	AB		C	Screw(3×8)
31	L P L T M 0 3 1 1 Q S Z Z	AD		C	Earth plate
33	L X - B Z 0 0 3 1 Q S P Z	AE		C	Screw
34	L A N G T 0 0 1 4 Q S Z Z	AF		C	MCU PWB fixing plate
35	L X - B Z 0 7 5 0 F C P Z	AA		C	Screw(3×6)
36	N B L T T 0 0 0 7 Q S Z Z	AH		B	Delivery roller drive belt
37	C P W B X 0 1 2 8 Q S 3 H	BZ	N	E	MCU PWB
40	L P L T M 0 3 0 7 Q S Z 2	AL		C	Delivery left cover
41	L P L T M 0 3 0 9 Q S Z Z	AE		C	Optical adjustment plate
42	L X - B Z 0 0 3 9 Q S P Z	AB		C	Screw(4×10)
43	X H B S 7 3 0 P 0 8 0 0 0	AB		C	Screw(3×8)
45	L H L D W 0 0 8 6 Q S Z Z	AB		C	Harness ring
46	X E B S 7 3 0 P 1 8 0 0 0	AB		C	Screw(3×18)
47	X W S S 7 3 0 - 0 7 0 0 0	AA		C	Washer
48	X W H S 7 3 0 - 0 5 0 8 0	AA		C	Washer
49	Q T A N N 0 0 1 5 F C Z Z	AG		C	3P terminal base
50	D H A i - 0 1 4 0 Q S Z 1	AH		C	AC harness
52	D H A i - 0 3 2 0 Q S Z Z	AN		C	PS harness
53	L F i X - 0 0 1 6 F C Z Z	AD		C	AC cord holder
54	X E P S 7 4 0 P 3 0 0 0 0	AC		C	Screw(4×30)
55	X E B S 7 4 0 P 1 2 0 0 0	AA		C	Screw(4×12)
56	X W S S 7 4 0 - 1 0 0 0 0	AA		C	Washer
57	X W H S 7 4 0 - 0 8 1 0 0	AA		C	Washer
58	D H A i - 0 3 2 8 Q S Z Z	AH		C	GDI-MCU harness
59	X E B S 7 3 0 P 0 6 0 0 0	AA		C	Screw(3×6)
60	L P L T M 0 3 1 0 Q S Z Z	AP		C	MCU fixing plate
61	L P L T M 0 3 0 6 Q S Z 1	AL		C	Optical reinforce plate
64	P S H E Z 0 1 3 5 Q S Z Z	AC		C	Driving plate sheet
65	X W H S 7 4 0 - 0 8 1 0 0	AA		C	Washer
66	X E B S 7 3 0 P 0 8 0 0 0	AC		C	Screw(3×8)
67	P S H E Z 0 4 2 1 Q S Z Z	AC		C	MCU edge protect sheet
68	C S W - M 0 0 0 7 R S 5 5	AS		B	Interlock switch unit
69	P S H E Z 0 4 0 8 Q S Z Z	AC		C	Interlock switch maintenance sheet
70	L P L T M 0 3 0 3 Q S Z Z	AE		C	Interlock switch fixing plate
71	X B P S 7 2 0 P 0 9 0 0 0	AB		C	Screw(2×9)
72	X W H S 7 2 0 - 0 4 0 4 3	AA		C	Washer
73	P S H E Z 0 4 4 8 Q S Z Z	AA		C	Optical base plate bottom sheet A
74	R C O R F 0 0 2 7 Q S Z Z	AN		C	IF FFC core
75	D H A i - 0 3 4 2 Q S Z Z	AG		C	CCD harness
76	R C O R F 0 0 1 8 Q S Z Z	AR		C	Ferrite core
77	P D U C - 0 0 0 6 Q S Z 1	AF		C	Duct
78	P F i L Z 0 0 1 3 Q S Z Z	AR		A	Ozone filter
79	P S H E Z 0 1 4 0 Q S Z 1	AE		C	3P terminal base sheet
80	T L A B Z 4 8 6 8 F C Z Z	AC		D	Earth label
81	L P L T M 0 3 6 0 Q S Z Z	AC		C	Earth plate
82	L B N D J 0 0 3 7 F C Z 1	AA		C	Band
501	C D E N C 0 0 1 0 R S 5 7	BV		E	Power supply unit(Without No.13,17,18,80)
502	D U N T - 0 3 4 1 R S 1 1	AU		E	Corner frame RR unit

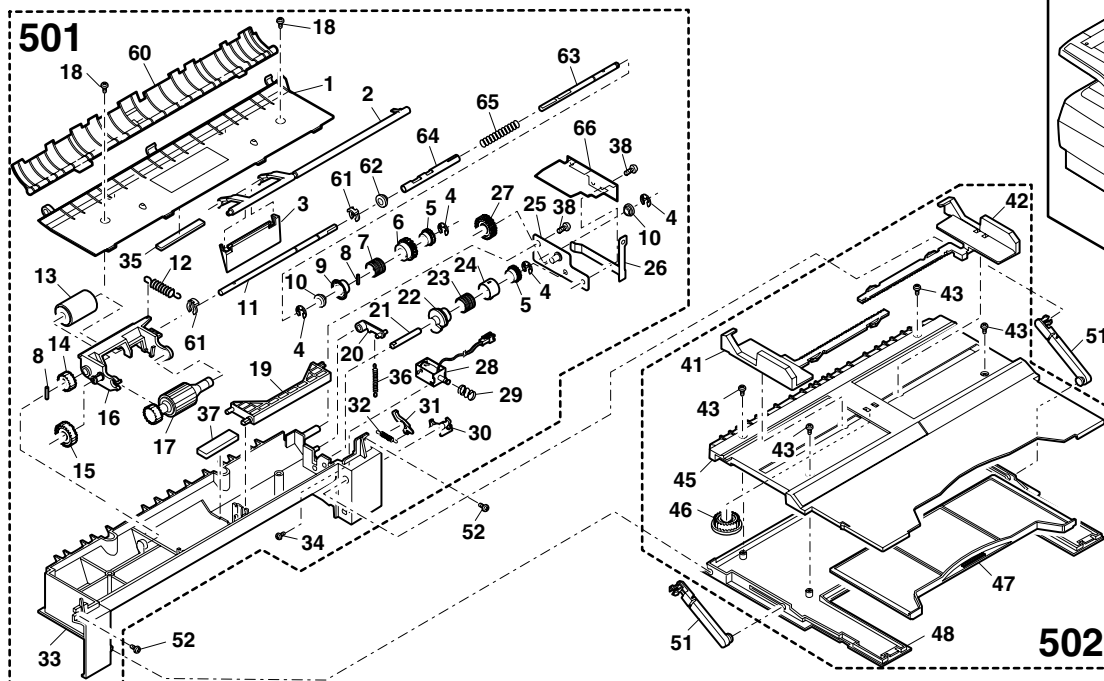
12 Base plate unit 2



## 13

[illegible]

# 13 Manual paper feeding multi unit

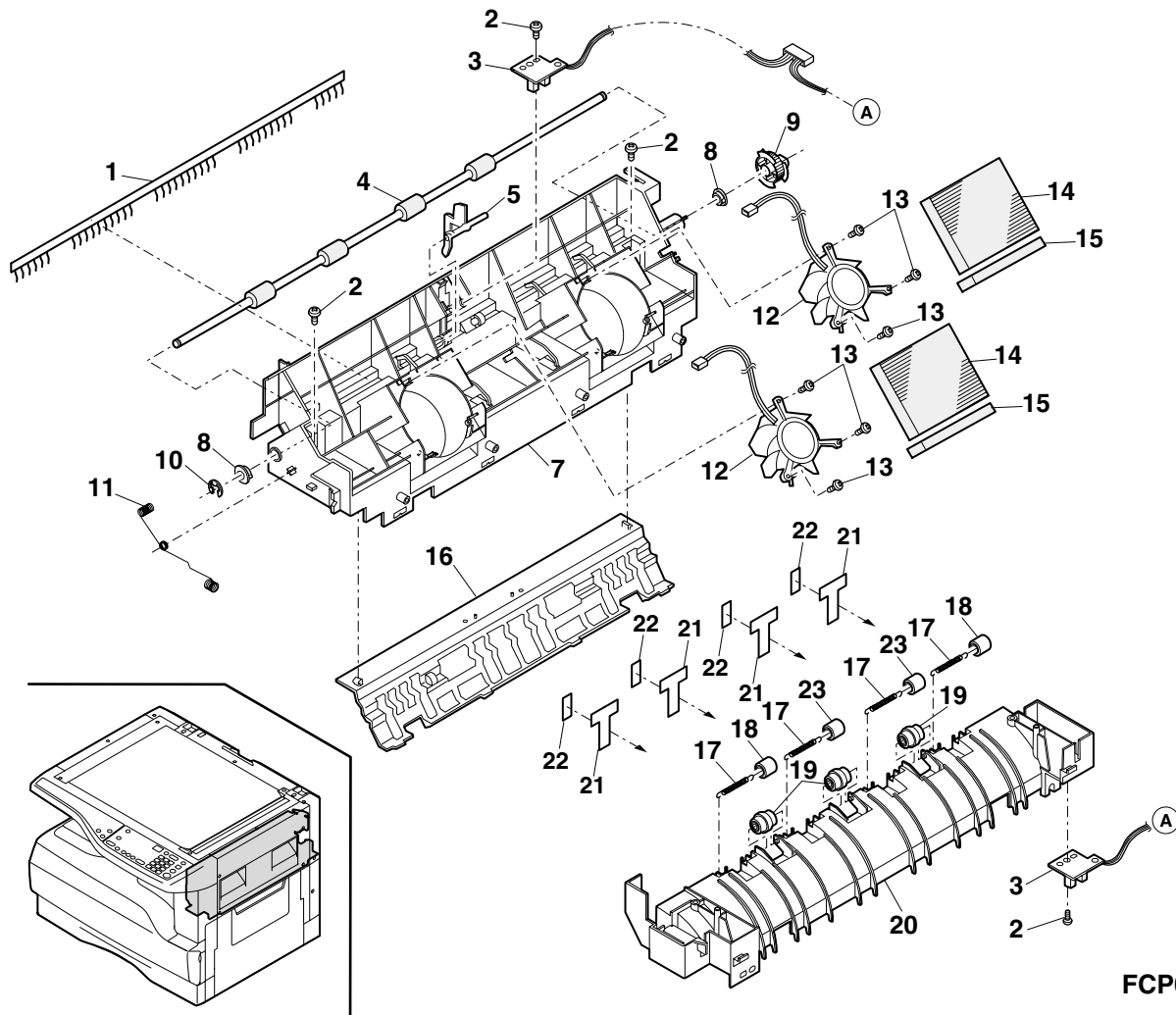


PRP02703

# 14 Delivery frame unit

NO.	PARTS CODE	PRICE RANK	NEW MARK	PART RANK	DESCRIPTION
1	PBRSS0026QSZZ	AF		B	Discharge brush
2	XEBS730P08000	AC		C	Screw(3×8)
3	CPWBF0147QSE9	AP		E	Duplex/P-out sensor PWB
4	NROLM0109QSPZ	AT	N	B	Delivery roller S
5	MLEVP0025QSZ2	AD		C	Delivery actuator
7	LFRM-0065QSEZ	AK		C	Delivery upper frame
8	NBRGM0501FCZZ	AB		C	Bearing(B-F6-7)
9	NPLYZ0029QSZZ	AD		C	Delivery drive gear(34T)
10	XRESP50-06000	AA		C	E type ring(E5)
11	MSPRD0297QSZ1	AG		C	Delivery earth spring A
12	NFANP0014QSZZ	AT		B	Cooling fan
13	XEBS720P06000	AC		C	Screw(2×6)
14	PFILZ0004QSZZ	AM		A	Ozone filter
15	PMLT-0099QSZZ	AC		C	Cleaning fan cushion
16	PGIDM0062QSZ1	AP		C	Delivery upper paper guide
17	MSPRT0229GCAZ	AC		C	FU spring R
18	NROLP0034QSZZ	AD		C	Delivery roller
19	NKOM-0002QSZZ	AC		C	Delivery collar
20	LFRM-0066QSZZ	AT		C	Delivery lower frame
21	PSHEZ0446QSZZ	AB		C	Delivery sheet
22	PSHEZ0449QSZZ	AB		C	Rubber sheet
23	NROLP0104QSZZ	AC		C	Delivery roller

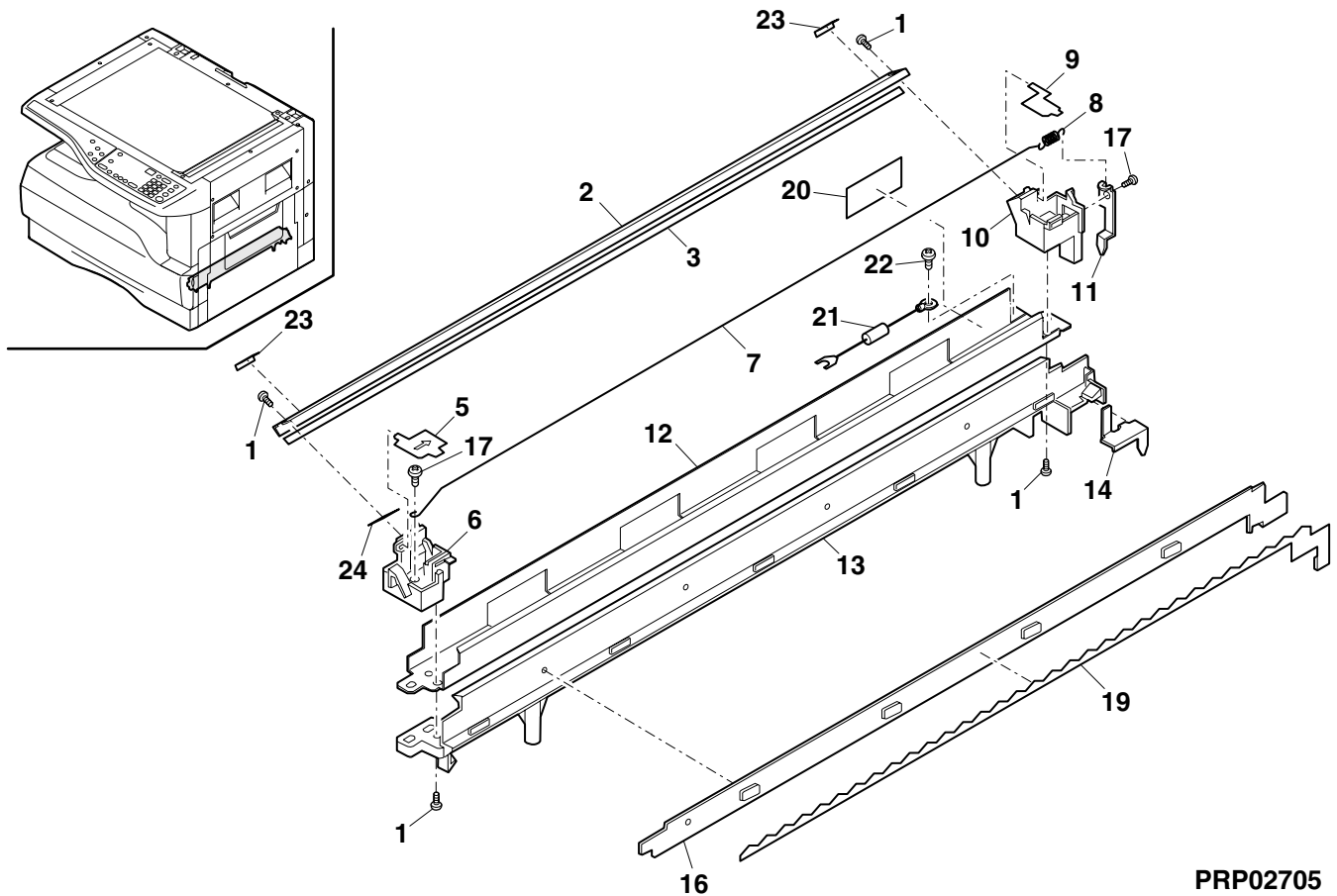
# 14 Delivery frame unit



# 15 TC case unit

NO.	PARTS CODE	PRICE RANK	NEW MARK	PART RANK	DESCRIPTION
1	XEB S730P08000	AC		C	Screw(3×8)
2	PG iDH0118QSZZ	AK		C	TC front guide
3	PSHEP0050QSZ1	AD		C	TC sheet
5	PSHEP0051QSZZ	AB		C	TC cover sheet F
6	LHLDZ0030QSZZ	AD		C	TC holder F
7	DW iR-0466CSZZ	BE		B	Charger wire
8	MSPRT0513FCZ1	AA		C	MC tension spring
9	PSHEP0052QSZZ	AB		C	TC cover sheet R
10	LHLDZ0032QSZZ	AD		C	TC holder R
11	QSLP-0009QSZZ	AD		C	TC electrode plate
12	PCASZ0013QSZZ	AP		C	TC case
13	LHLDZ0031QSZZ4	AH		C	Discharge holder
14	QSLP-0008QSZZ	AD		C	BC electrode plate
16	PG iDM0032QSZZ	AE		C	Separator guide
17	XEB S730P06000	AA		C	Screw(3×6)
19	PSHEZ0125QSZZ	AE		C	Discharger delivery sheet
20	PSHEZ0434QSZZ	AC		C	TC case sheet
21	DUNTK0233QSPZ	AH		E	Resistor unit transfer
22	XB PSC30P06K00	AA		C	Screw(3×6K)
23	PSHEZ0435QSZ1	AA		C	Guide sheet
24	PSPAZ0040QSZZ	AB		C	Front guide spacer
	(Unit)				
901	CHLDZ0030RS55	AY		E	TC case unit

# 15 TC case unit

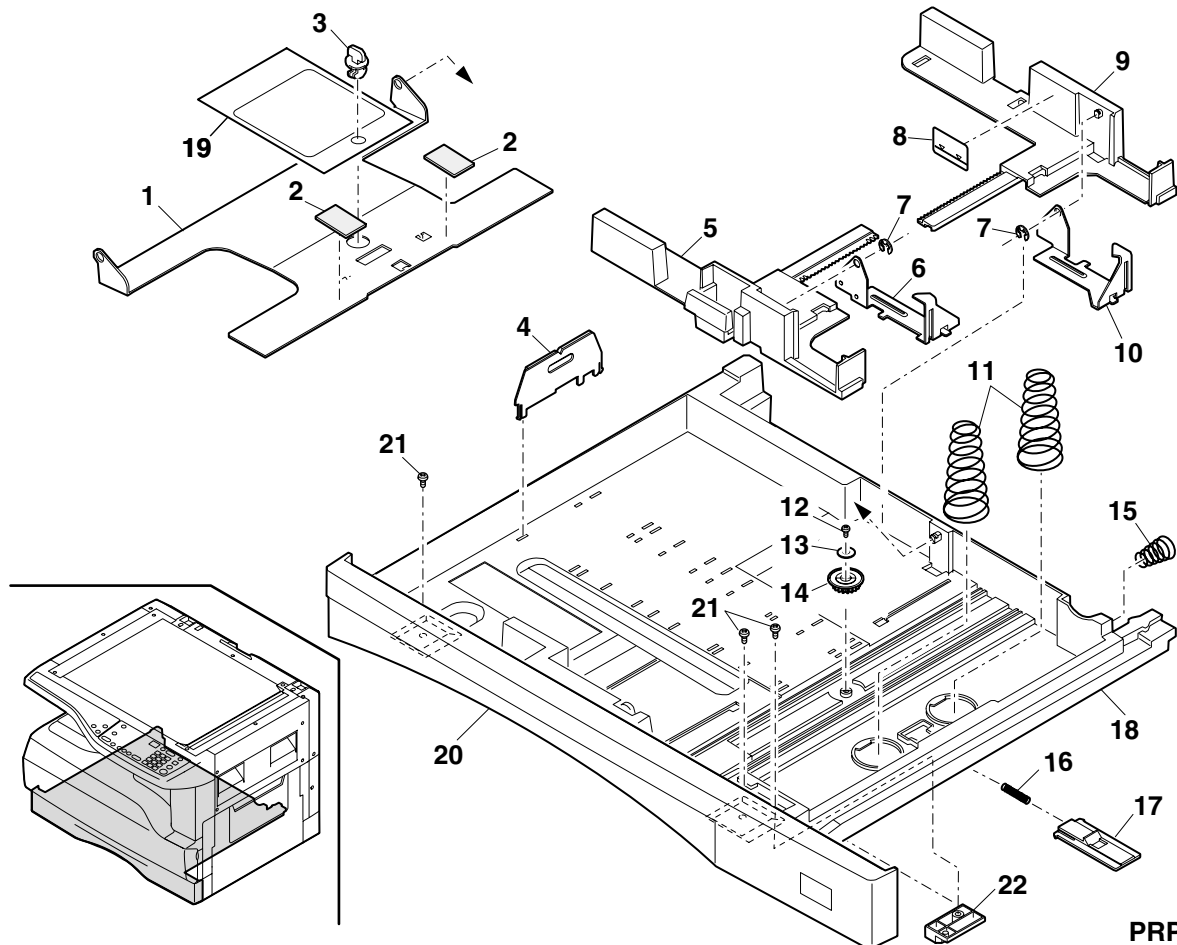


PRP02705

# 16 250 sheets tray unit

NO.	PARTS CODE	PRICE RANK	NEW MARK	PART RANK	DESCRIPTION
1	LPLTM0364QSZZ	AR		C	Rotation plate
2	PSHEZ0441QSZZ	AD		C	Rotation plate sheet
3	LHLDW1226FCZZ	AB		C	Turn fastener
4	LPLTM2642FCG2	AD		C	Tray rear plate
5	PGIDM0122QSZZ	AL		C	Guide F
6	PTME-0027QSZZ	AL		C	250 Tray pawl F
7	XRESP40-06000	AA		C	E type ring(E4)
8	TLABH0064QSZ1	AC		D	Indicator label
9	PGIDM0123QSZZ	AL		C	Guide R
10	PTME-0028QSZZ	AL		C	250 Tray pawl R
11	MSPRC0334QSZZ	AD		C	Tray spring
12	XEBS730P08000	AC		C	Screw(3×8)
13	XWHS730-08100	AA		C	Washer
14	NGERH0193FCZZ	AB		C	UC manual feed gear
15	MSPRC0152QSZZ	AB		C	Tray drawer lower spring D
16	MSPRC1145FCZZ	AA		C	Stopper spring
17	LSTPP0161FCZZ	AB		C	Rotation plate stopper
18	GCASP0007QSZ1	AY		D	Tray case
19	TTAG-0009QSZZ	AC		D	Tray rotation tag
20	JHNDP0007QSZZ	AS		C	Cassette panel
21	XEBS740P10000	AA		C	Screw(4×10)
22	LPLTP0368QSZZ	AD		C	Cassette position block
	(Unit)				
901	CCASP0007RS52	BL		E	250 sheets tray unit

# 16 250 sheets tray unit



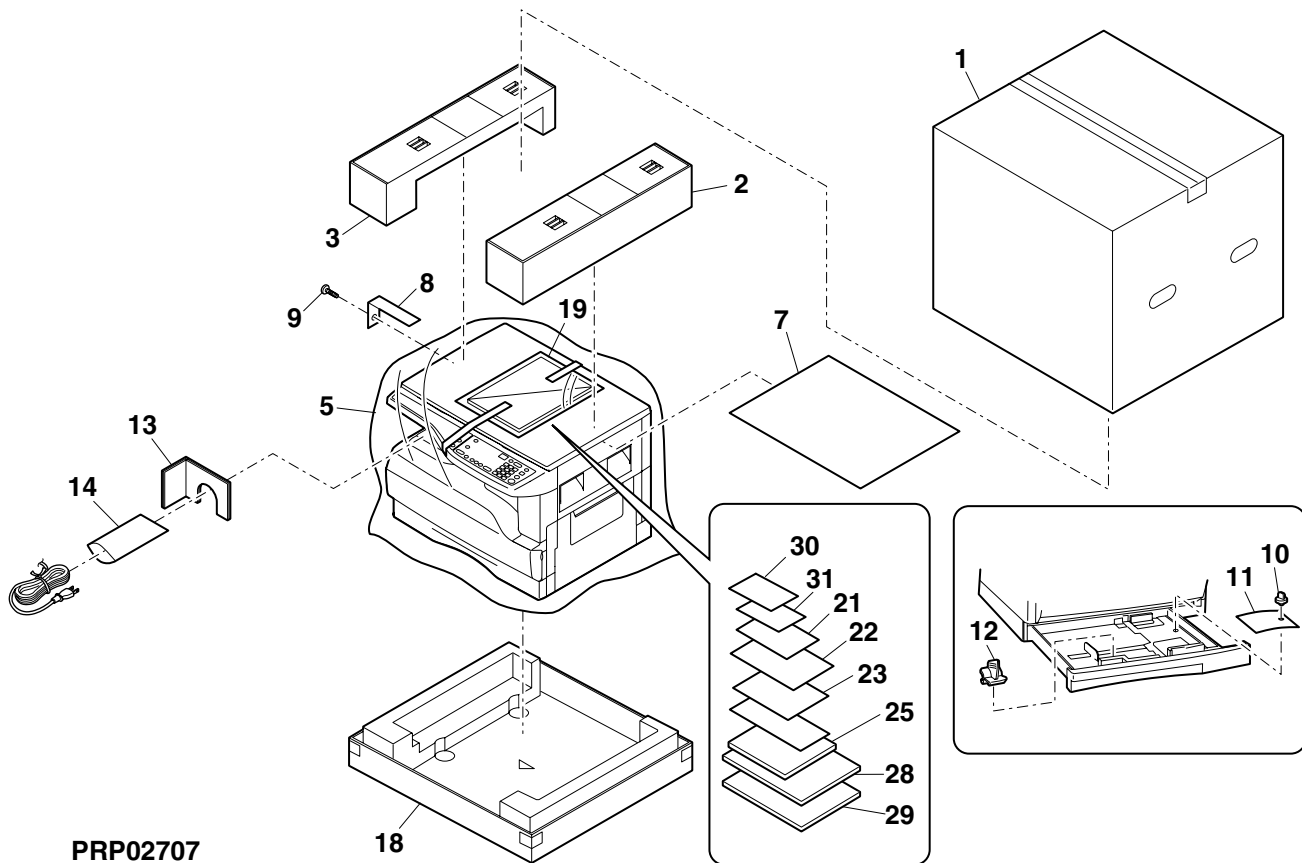
PRP02706



## 17 Packing material & Accessories

NO.	PARTS CODE	PRICE RANK	NEW MARK	PART RANK	DESCRIPTION
1	SPAKC0462QS24	BB	N	D	Packing case
2	SPAKA0464QSZZ	AV		D	Top packing cushion R
3	SPAKA0463QSZZ	AV		D	Top packing cushion L
5	SSAKZ0003QSZZ	AF		D	Vinyl bag
7	SPAKA0134QSZZ	AE		D	OC protect sheet
8	TCADZ0010QSZZ	AC		D	Fixing screw caution card
9	LX-BZ0015QSPZ	AF		C	2nd,3rd mirror fixing screw
10	LHLDW1226FCZZ	AB		C	Turn fastener
11	TTAG-0009QSZZ	AC		D	Tray rotation tag
12	CCLZ0005QS51	AQ		E	Charger cleaner unit
13	SPAKA0466QSZZ	AG		D	Scanner reinforcement material
14	SSAKA3001CCZZ	AA		D	Vinyl bag(140×260mm)
18	SPAKA0465QSZZ	BE		D	Bottom case
19	SSAKA2343QCZZ	AA		D	Vinyl bag(260×380mm)
21	TLABH0068QSZ1	AF		D	Magnification select label
22	TLABH0065QSZ2	AG		D	Size display label
23	CCASZ0067FC01	AD		D	Maintenance card
25	CDSKA0059QS33	AM		D	CD-ROM
28	TINSA1471QSZZ	BB	N	D	Operation manual(COPY) (ARABIC)
	TINSE1470QSZZ	BC	N	D	Operation manual(COPY) (ENGLISH)
29	TINSE1473QSZZ	AU	N	D	Operation manual(SETUP) (ARABIC)
30	TINSX1475QSZZ	AG	N	D	Supplementary manual
31	TINSE1476QSZZ	AT	N	D	Soft manual

## 17 Packing material & Accessories



# Index

PARTS CODE	NO.	PRICE RANK	NEW MARK	PART RANK	
【C】					
CARMP0010QS03	1- 12	AD		C	
CBOX-0001JS5H	8-501	BL		E	
CBTN-0060QS01	2- 7	AK		C	
CBTN-0061QS01	2- 8	AE		C	
CBTN-0062QS01	2- 10	AF		C	
CCAB-0079QS01	1- 27	AQ		D	
CCASP0007RS52	16-901	BL		E	
CCASZ0067FC01	17- 23	AD		D	
CCLEZ0005QS51	17- 12	AQ		E	
CCOV-0046QS35	1- 11	AY	N	D	
CCOVH0010RS56	1-501	BK		E	
CCOVP0072RS56	8-502	AS		E	
CDAIU0012QS14	4- 48	BF	N	D	
CDENC0010RS57	12-501	BV		E	
CDOR-0004RS51	3-901	BC		E	
CDSKA0059QS33	17- 25	AM		D	
CFIX-0024QS01	1- 7	AL		D	
CFRM-0017QS01	9- 10	AH		C	
CFRM-0018QS01	9- 12	AH		C	
CFRM-0020RS57	13-501	BF		E	
CFRM-0021RS6M	7- 4	AY		E	
CFRM-0021RS6N	7-501	BF		E	
CGERH0011RS51	10-501	AE		E	
CGIDM0089RS53	8-503	AY		E	
CGUMM0013RS51	11-502	AN		E	
CHAI-0107RS52	6- 11	AM		C	
CHAI-0109RS52	6- 10	AN		C	
CHLDZ0030RS55	15-901	AY		E	
CHLDZ0035RS55	7- 2	BG		E	
CHNG-0007QS02	1- 3	AM		C	
CMIR-0008QS37	4- 2	BA		E	
CMIR-0008QS37	5-901	BA		E	
CPLTM0047QS06	10- 18	AZ		C	
CPLTM0047RS61	10-901	BL		E	
CPLTM0047RS81	10-502	BE		E	
CPLTM0155QS03	5- 13	AH		C	
CPLTM0156QS03	5- 9	AH		C	
CPLTM0255QS01	9- 59	AS		C	
CPLTM0304QS02	13- 25	AD		C	
CPLTM0312QS02	4- 32	AK		C	
CPLTP0060RS52	9-501	AR		E	
CPNLH0026QS23	2- 17	BA		D	
CPNLH0033QS01	2- 19	AT		D	
CPWBF0114QSE6	12- 5	BA		E	
CPWBF0147QSE4	11- 24	AL		E	
CPWBF0147QSE9	14- 3	AP		E	
CPWBF0147QSF3	4- 22	AL		E	
CPWBF0159QSE3	2- 12	BE		E	
CPWBX0128QS3H	12- 37	BZ	N	E	
CREFL0005RS52	4-501	BH		E	
CSFTZ0066RS73	11-501	AV		E	
CSOU-0009QS34	13-502	BA		E	
CSW-M0007RS55	12- 68	AS		B	
CSW-M0007RS55	6- 2	AS		B	
【D】					
DHAI-0106QSZ2	6- 24	AK		C	
DHAI-0108QSZ1	6- 25	AH		C	
DHAI-0110QSZ1	10- 3	AL		C	
DHAI-0140QSZ1	12- 50	AH		C	
DHAI-0184QSZ1	9- 3	AE		C	
DHAI-0313QSZZ	8- 50	AH		C	
DHAI-0315QSZZ	11- 2	AD		C	
DHAI-0316QSZZ	11- 63	AE		C	
DHAI-0318QSZZ	11- 62	AE		C	
DHAI-0320QSZZ	12- 52	AN		C	
DHAI-0321QSZZ	6- 63	AH		C	
DHAI-0322QSZZ	6- 8	AS		C	
DHAI-0323QSZZ	10- 5	AC		C	
DHAI-0324QSZZ	2- 20	AH		C	
DHAI-0327QSZZ	10- 4	AD		C	
DHAI-0328QSZZ	12- 58	AH		C	
DHAI-0332QSZZ	4- 81	AE		C	
DHAI-0333QSZZ	6- 57	AL		C	
DHAI-0342QSZZ	12- 75	AG		C	
DHAI-0342QSZZ	4- 9	AG		C	
DUNT-0341RS11	12-502	AU		E	
DUNT0233QSPZ	15- 21	AH		E	

PARTS CODE	NO.	PRICE RANK	NEW MARK	PART RANK	
DUNT0343RS12	6- 7	BR		E	
DUNT0347RS11	12- 9	AS		E	
DUNT0524RS12	9-901	BV		E	
DWIR-0466CSZZ	15- 7	BE		B	
【G】					
GCAB-0015QSEB	1- 23	AU		D	
GCAB-0067QSZZ	2- 15	AX		D	
GCAB-0068QSZZ	1- 10	AV		D	
GCAB-0069QSZZ	12- 2	AT		D	
GCAB-0070QSZZ	1- 18	BA		D	
GCAB-0071QSZZ	1- 15	AU		D	
GCAB-0073QSZZ	2- 2	AW		D	
GCASP0007QSZ1	16- 18	AY		D	
GCOV-0047QSZZ	1- 6	AM		D	
GCOV-0048QSZZ	1- 13	AM		D	
GCOV-0050QSZZ	2- 14	AN		D	
GCOVH0010QSE5	1- 1	BD		D	
GCOVH0011QSE1	1- 22	AM		D	
GDAI-0002QSE1	11- 12	BF		C	
GDAI-0002QSE1	12- 22	BF		C	
GDOR-0004QSZ1	3- 1	AQ		D	
GLEGG0064FCZZ	11- 41	AC		C	
【J】					
JBTN-0063QSZZ	2- 11	AE		C	
JBTN-0064QSZZ	2- 6	AF		C	
JBTN-0065QSZZ	2- 5	AE		C	
JBTN-0066QSZZ	2- 4	AH		C	
JHNDP0007QSZZ	16- 20	AS		C	
JKNBZ0008QSZZ	3- 32	AE		C	
JKNBZ0010QSZZ	6- 41	AD		C	
【L】					
LANGT0003QSZ1	6- 51	AC		C	
LANGT0014QSZZ	12- 34	AF		C	
LBNDJ0013FCZ1	6- 54	AE		C	
LBNDJ0037FCZ1	12- 82	AA		C	
LBNDJ0043FCZ1	4- 24	AA		C	
LBOSZ1031FCZZ	11- 14	AC		C	
LBOSZ1508FCZZ	13- 9	AG		C	
LBOSZ1510FCZZ	6- 33	AG		C	
LBOSZ1510FCZZ	13- 5	AF		C	
LBRC-0012QSZZ	11- 72	AD		C	
LBRCR0011QSZZ	11- 69	AD		C	
LBSHZ0006QSZZ	13- 62	AC		C	
LBSHZ0303FCZZ	13- 10	AC		C	
LDAIS0029QSZZ	11- 33	AD		C	
LDAIU0030QSZZ	4- 92	AS		C	
LFIX-0007QSZ1	7- 31	AE		C	
LFIX-0016FCZZ	12- 53	AD		C	
LFIX-0023QSZZ	4- 83	AC		C	
LFIX-0284FCZZ	5- 11	AC		C	
LFRM-0016QSZZ	3- 10	AQ		C	
LFRM-0020QSE6	13- 33	AT		C	
LFRM-0024QSZZ	6- 46	BC		C	
LFRM-0025QSZZ	12- 23	AH		C	
LFRM-0026QSZZ	12- 25	AN		C	
LFRM-0036QSZZ	9- 40	AS		D	
LFRM-0065QSEZ	14- 7	AK		C	
LFRM-0066QSZZ	14- 20	AT		C	
LFRM-0067QSZZ	12- 14	AK		C	
LFRM-0068QSZZ	12- 16	AQ		C	
LHLD00072QSZZ	8- 34	AC		C	
LHLD00095QSZZ	11- 67	AD		C	
LHLD00086QSZZ	12- 45	AB		C	
LHLDW1226FCZZ	16- 3	AB		C	
LHLDW1226FCZZ	17- 10	AB		C	
LHLDZ0001YSZZ	8- 30	AD		C	
LHLDZ0013QSZZ	5- 5	AD		C	
LHLDZ0030QSZZ	15- 6	AD		C	
LHLDZ0031QSZZ	15- 13	AH		C	
LHLDZ0032QSZZ	15- 10	AD		C	
LHLDZ0033QSZZ	3- 15	AF		C	
LHLDZ0034QSZZ	9- 14	AF		C	
LHLDZ0038QSZZ	6- 15	AH		C	
LHLDZ0039QSZZ	6- 21	AE		C	
LHLDZ0044QSZZ	5- 1	AN		C	
LHLDZ0098QSZZ	7- 12	AD		C	
LHLDZ0099QSZZ	6- 62	AC		C	
LHLDZ0100QSZZ	11- 37	AD		C	
LHLDZ0104QSZZ	4- 25	AD		C	
LHLDZ0109QSZZ	4- 4	AD		C	
LPFTF0004QSZZ	4- 62	AB		C	

PARTS CODE	NO.	PRICE RANK	NEW MARK	PART RANK	
LPI NS0301FCZZ	6- 47	AD		C	
LPLTM0001YSZZ	8- 28	AN		B	
LPLTM0002YSZZ	8- 27	AP		C	
LPLTM0048QSZZ	10- 11	AF		C	
LPLTM0050QSZZ	9- 17	AM		C	
LPLTM0065QSZZ	11- 6	AL		C	
LPLTM0067QSZZ	6- 22	AC		C	
LPLTM0082QSZZ	12- 12	AF		C	
LPLTM0090QSZZ	3- 8	AE		C	
LPLTM0091QSZZ	3- 6	AE		C	
LPLTM0092QSZZ	3- 4	AF		C	
LPLTM0099QSZZ	12- 24	AK		C	
LPLTM0125QSZZ	11- 52	AD		C	
LPLTM0149QSZZ	6- 55	AD		C	
LPLTM0303QSZZ	12- 70	AE		C	
LPLTM0306QSZZ	12- 61	AL		C	
LPLTM0307QSZZ	12- 40	AL		C	
LPLTM0308QSZZ	12- 21	AL		C	
LPLTM0309QSZZ	12- 41	AE		C	
LPLTM0310QSZZ	12- 60	AP		C	
LPLTM0311QSZZ	12- 31	AD		C	
LPLTM0314QSZZ	4- 80	AC		C	
LPLTM0360QSZZ	12- 81	AC		C	
LPLTM0364QSZZ	16- 1	AR		C	
LPLTM2642FCG2	16- 4	AD		C	
LPLTM6022FCZZ	8- 36	AC		C	
LPLTP0051QSZZ	9- 23	AD		C	
LPLTP0056QSZZ	13- 3	AD		C	
LPLTP0060QSZZ	9- 41	AM		C	
LPLTP0348QSZZ	11- 29	AC		C	
LPLTP0368QSZZ	16- 22	AD		C	
LRALM0006QSZZ	4- 47	AG		C	
LRALM0007QSZZ	4- 27	AG		C	
LRALP0004QSZZ	3- 2	AH		C	
LRALP0014QSEZ	11- 27	AM		C	
LSOU-0009QSE2	13- 45	AS		D	
LSOU-0010QSE1	13- 48	AR		D	
LSOU-0011QSE1	13- 47	AL		D	
LSOU-0036QSZZ	12- 1	BB		D	
LSTPP0011QSZZ	13- 61	AC		C	
LSTPP0014QSZZ	6- 60	AC		C	
LSTPP0116FCZZ	9- 7	AA		C	
LSTPP0161FCZZ	16- 17	AB		C	
LX-BZ0004QSPZ	4- 26	AB		C	
LX-BZ0013QSP1	9- 30	AD		C	
LX-BZ0015QSPZ	17- 9	AF		C	
LX-BZ0020QSPZ	6- 56	AB		C	
LX-BZ0027QSPZ	8- 3	AD		C	
LX-BZ0031QSPZ	12- 33	AE		C	
LX-BZ0039FCZZ	4- 64	AB		C	
LX-BZ0039QSPZ	12- 42	AB		C	
LX-BZ0046QSZZ	6- 52	AA		C	
LX-BZ0049FCZZ	4- 42	AB		C	
LX-BZ0324FCPZ	4- 41	AA		C	
LX-BZ0335FCPZ	5- 8	AB		C	
LX-BZ0750FCPZ	1- 14	AA		C	
“	12- 35	AA		C	
“	2- 1	AA		C	
LX-BZ0759FCPZ	1- 25	AC		C	
LX-BZ3008SCPS	1- 53	AA		C	
LX-RZ0001QSZZ	7- 14	AB		C	
LX-WZ0001GCZZ	5- 17	AB		C	
LX-WZ0001QSZZ	9- 55	AC		C	
LX-WZ0002QSZZ	10- 13	AB		C	
LX-WZ0017GCZZ	4- 35	AC		C	
LX-WZ0198FCZZ	6- 66	AA		C	
LX-WZ0313FCZZ	9- 48	AA		C	
LX-WZ0314FCZZ	10- 37	AA		C	
LX-WZ1003HCZZ	1- 60	AA		C	
“	6- 67	AA		C	
LX-WZ7021SCPZ	9- 58	AA		C	
[M]					
MARMP0005QSE1	13- 51	AD		C	
MARMP0006QSZZ	13- 20	AD		C	
MARMP0008QSZZ	13- 2	AH		C	
MARMP0009QSZZ	13- 16	AF		C	
MARMP0041QSZZ	13- 19	AE		C	
MCAMP0001QSZZ	13- 22	AF		C	
MLEVP0017QSZZ	9- 36	AF		C	
MLEVP0018QSZZ	9- 33	AF		C	
MLEVP0019QSZZ	9- 34	AE		C	

PARTS CODE	NO.	PRICE RANK	NEW MARK	PART RANK	
MLEVP0020QSZZ	9- 35	AE		C	
MLEVP0023QSZZ	11- 25	AE		C	
MLEVP0024QSZZ	11- 32	AF		C	
MLEVP0025QSZZ	14- 5	AD		C	
MLEVP0026QSZZ	9- 42	AE		C	
MLEVP0044QSZZ	11- 42	AE		C	
MLEVP0091QSZZ	11- 39	AD		C	
MSLI-0138FCZZ	4- 85	AC		E	
“	5- 7	AC		E	
MSPRC0024QSZZ	6- 4	AA		C	
MSPRC0040QSZZ	4- 28	AB		C	
MSPRC0045QSZZ	7- 26	AA		C	
MSPRC0081QSZZ	10- 34	AB		C	
MSPRC0082QSZZ	3- 16	AC		C	
MSPRC0083QSZZ	3- 14	AD		C	
MSPRC0084QSZZ	3- 13	AD		C	
MSPRC0085QSZZ	3- 9	AE		C	
MSPRC0106QSZZ	6- 35	AF		C	
MSPRC0152QSZZ	16- 15	AB		C	
MSPRC0161QSZZ	11- 15	AF		C	
MSPRC0278QSZZ	6- 26	AC		C	
MSPRC0301QSZZ	11- 30	AD		C	
MSPRC0319QSZZ	3- 31	AB		C	
MSPRC0334QSZZ	16- 11	AD		C	
MSPRC0339QSZZ	6- 68	AD		C	
MSPRC1145FCZZ	16- 16	AA		C	
MSPRC1315FCZZ	13- 7	AD		C	
MSPRC1316FCZZ	13- 23	AE		C	
MSPRC1318FCZZ	10- 9	AA		C	
“	13- 29	AA		C	
MSPRC2132FCZZ	10- 23	AA		C	
MSPRC2175FCZZ	13- 32	AA		C	
MSPRD0092QSZZ	13- 26	AE		C	
MSPRD0102QSZZ	6- 14	AC		C	
MSPRD0103QSZZ	6- 13	AC		C	
MSPRD0104QSZZ	6- 12	AC		C	
MSPRD0117QSZZ	9- 43	AB		C	
MSPRD0118QSZZ	9- 44	AB		C	
MSPRD0121QSZZ	9- 53	AB		C	
MSPRD0122QSZZ	9- 52	AB		C	
MSPRD0139QSZZ	6- 30	AB		C	
MSPRD0148QSZZ	11- 76	AB		C	
MSPRD0233QSZZ	11- 35	AC		C	
MSPRD0297QSZZ	14- 11	AG		C	
MSPRD0298QSZZ	6- 61	AD		C	
MSPRD0300QSZZ	11- 38	AD		C	
MSPRD0302QSZZ	13- 65	AC		C	
MSPRD0332QSZZ	11- 73	AB		C	
MSPRK0001YSZZ	8- 33	AB		C	
MSPRP0087QSZZ	9- 31	AC		C	
MSPRP2825FCZZ	4- 86	AC		C	
MSPRT0086QSZZ	9- 18	AB		C	
MSPRT0091QSZZ	13- 12	AC		C	
MSPRT0147QSZZ	13- 36	AC		C	
MSPRT0229GCAZ	14- 17	AC		C	
MSPRT0303QSZZ	9- 32	AD		C	
MSPRT0513FCZZ	15- 8	AA		C	
[N]					
NBLTT0007QSZZ	12- 36	AH		B	
NBLTT0037QSZZ	4- 37	AL		B	
NBRGC0018QSZZ	6- 38	AD		C	
NBRGC0020QSZZ	8- 17	AH		C	
NBRGC0021QSZZ	8- 21	AD		C	
NBRGM0501FCZZ	14- 8	AB		C	
NBRGP0007QSZZ	11- 19	AD		C	
NBRGP0011QSZZ	4- 46	AC		C	
NBRGP0012QSZZ	4- 39	AC		C	
NBRGP0260FCZZ	9- 28	AD		C	
NBRGP0299FCPZ	7- 18	AD		C	
NBRGP0567FCZZ	9- 8	AG		A	
NCPL-0003QSZZ	7- 9	AC		C	
NCPL-0004FCZZ	10- 24	AB		C	
NCPL-0007QSZZ	6- 3	AC		C	
NCPL-0012QSZZ	13- 64	AD		C	
NFANP0010QSZZ	12- 6	AS		B	
NFANP0014QSZZ	14- 12	AT		B	
NGERH0001YSZZ	8- 20	AD		C	
NGERH0002YSZZ	8- 18	AD		B	
NGERH0007QSZZ	10- 26	AH		C	
NGERH0008QSZZ	10- 28	AH		C	
NGERH0009QSZZ	10- 20	AD		C	

PARTS CODE	NO.	PRICE RANK	NEW MARK	PART RANK	
NGERH0010QSZZ	10- 19	AD		C	
NGERH0011QSZZ	10- 22	AD		C	
NGERH0012QSZZ	10- 30	AE		C	
NGERH0013QSZZ	10- 32	AG		C	
NGERH0014QSZZ	10- 21	AD		C	
NGERH0016QSZZ	10- 33	AD		C	
NGERH0036QSZZ	7- 28	AC		C	
NGERH0037QSZZ	7- 30	AC		C	
NGERH0038QSZZ	7- 29	AC		C	
NGERH0039QSZZ	7- 25	AE		C	
NGERH0052QSZZ	10- 25	AE		C	
NGERH0053QSZZ	10- 14	AD		C	
NGERH0054QSZZ	10- 38	AD		C	
NGERH0055QSZZ	10- 35	AE		C	
NGERH0056QSZZ	10- 36	AE		C	
NGERH0057QSZZ	10- 27	AE		C	
NGERH0058QSZZ	10- 31	AF		C	
NGERH0059QSZZ	10- 29	AD		C	
NGERH0060QSZZ	11- 17	AH		C	
NGERH0061QSZZ	13- 15	AD		C	
NGERH0062QSZZ	6- 37	AK		C	
NGERH0145QSZ1	8- 23	AD		B	
NGERH0165QSZZ	4- 34	AE		C	
NGERH0193FCZZ	13- 46	AB		C	
“	16- 14	AB		C	
NGERH0495FCZZ	13- 14	AC		C	
NGERH0540FCZZ	9- 13	AD		B	
NGERH0972FCZZ	13- 27	AB		C	
NKOM-0001QSZZ	6- 29	AD		C	
NKOM-0002QSZZ	14- 19	AC		C	
NKOM-0009QSZZ	11- 74	AC		C	
NPLYZ0006QSZZ	4- 19	AD		C	
NPLYZ0016QSZZ	4- 18	AF		C	
NPLYZ0017QSZZ	5- 4	AE		C	
NPLYZ0029QSZZ	14- 9	AD		C	
NPLYZ0031QSZZ	4- 43	AL		C	
NPLYZ0032QSZZ	4- 40	AK		C	
NROL i 0030QSZZ	9- 11	BC		A	
NROLM0109QSPZ	14- 4	AT	N	B	
NROLM0121QSZZ	8- 26	BA		B	
NROLP0032QSP2	6- 40	AT		C	
NROLP0034QSZZ	14- 18	AD		C	
NROLP0072QSP1	8- 15	AP		C	
NROLP0104QSZZ	14- 23	AC		C	
NROLR0031QSP1	9- 27	BB		A	
NROLR0922FCZZ	13- 13	AR		A	
NROLR1267FCZZ	13- 17	AH		A	
NSFTZ0017QSPZ	13- 21	AM		C	
NSFTZ0019QSZZ	7- 22	AE		C	
NSFTZ0020QSZZ	7- 19	AL		C	
NSFTZ0021QSP1	6- 28	AN		C	
NSFTZ0064QSZZ	11- 75	AD		C	
NSFTZ0066QSPZ	11- 66	AP		C	
NSFTZ0069QSPZ	13- 11	AN		C	
NSFTZ0070QSPZ	13- 63	AN		C	
NSFTZ0071QSPZ	4- 44	AQ		C	
[P]					
PBOX-0001YS13	8- 14	AM		C	
PBRSR0004QSZ1	9- 50	AD		B	
PBRSS0026QSZZ	14- 1	AF		B	
PCAPH0009QSZZ	7- 21	AC		C	
PCASZ0010QSZZ	4- 7	AL		C	
PCASZ0013QSZZ	15- 12	AP		C	
PCLR-0010QSZZ	11- 65	AC		C	
PCLR-0011QSZZ	11- 71	AC		C	
PCOVP0029QSZ4	9- 5	AT		C	
PCOVP0033QSZ1	11- 26	AF		C	
PCOVP0072QS12	8- 11	AH		D	
PCOVP0080QSZZ	8- 38	AE		C	
PCOVP0091QSZZ	11- 60	AC		C	
PCOVP0093QSZZ	7- 32	AE		C	
PCOVP0098QSZZ	13- 1	AN		C	
PCUSF0334FCZZ	4- 87	AP		C	
PCUSS0009QSZZ	5- 10	AA		C	
PCUSS0023QSZZ	1- 2	AV		C	
PCUSS0201FCZZ	5- 14	AA		C	
PCUSU0203FCZZ	4- 88	AE		C	
PDUC-0006QSZ1	12- 77	AF		C	
PFI LZ0004QSZZ	14- 14	AM		A	
PFI LZ0012QSZZ	2- 9	AC		C	
PFI LZ0013QSZZ	12- 78	AR		A	

PARTS CODE	NO.	PRICE RANK	NEW MARK	PART RANK	
PFTA-0018QSZZ	11- 31	AE		C	
PGIDH0118QSZZ	15- 2	AK		C	
PGIDH0131QSZ1	9- 25	AU		C	
PGIDM0032QSZZ	15- 16	AE		C	
PGIDM0034QSZZ	9- 20	AL		C	
PGIDM0037QSEZ	13- 41	AF		C	
PGIDM0038QSEZ	13- 42	AF		C	
PGIDM0062QSZ1	14- 16	AP		C	
PGIDM0088QSZZ	8- 1	AP		D	
PGIDM0089QSZ1	8- 4	AQ		D	
PGIDM0102QSZZ	9- 60	AD		C	
PGIDM0103QSZZ	9- 61	AD		C	
PGIDM0104QSZZ	10- 1	AK		C	
PGIDM0110QSZZ	1- 19	AG		C	
PGIDM0111QSZZ	1- 21	AG		C	
PGIDM0117QSZZ	13- 60	AH		C	
PGIDM0122QSZZ	16- 5	AL		C	
PGIDM0123QSZZ	16- 9	AL		C	
PGLSP0003QSZZ	1- 8	BA		B	
PGUMM0013QSZZ	11- 70	AG		C	
PGUMS0002QSZZ	4- 33	AL		C	
PGUMS0004QSZZ	4- 21	AA		C	
PMIR-0008QSZ1	5- 12	BA		B	
PMIR-0164FCZZ	4- 89	AP		B	
PMLT-0002YSZ1	8- 12	AC		C	
PMLT-0005YSZZ	8- 13	AB		C	
PMLT-0006YSZZ	8- 16	AB		C	
PMLT-0018QSZ1	7- 20	AC		C	
PMLT-0033QSZZ	4- 56	AC		C	
PMLT-0039QSZZ	1- 41	AC		C	
PMLT-0084QSZZ	5- 16	AB		C	
PMLT-0099QSZZ	14- 15	AC		C	
PIPP0005QSZZ	7- 24	AM		C	
PIPP0006QSZZ	11- 16	AD		C	
PIPP0009QSZZ	13- 24	AD		C	
PIPP0109FCZZ	13- 6	AB		C	
PIPP0174FCZZ	6- 34	AC		C	
PREFL0005QSZZ	4- 90	AH		C	
PREFL0006QSZ1	4- 97	AK		C	
PRNGF0106FCZZ	7- 16	AC		C	
PSSEL-0001YSZ1	8- 42	AE		C	
PSSEL-0063QSZZ	8- 37	AA		C	
PSSEL-0065QSZ1	8- 5	AA		C	
PSSEL-0066QSZ1	8- 6	AC		C	
PSSEL-0067QSZ4	8- 7	AG		C	
PSSEL-0074QSZZ	8- 43	AC		C	
PSSEL-0105QSZZ	8- 8	AA		C	
PSSEL-0114QSZZ	8- 48	AC		C	
PSSEL-0115QSZZ	8- 49	AD		C	
PSSEL-0129QSZZ	7- 6	AF		C	
PSSEL-0130QSZZ	7- 5	AF		C	
PSHEG0504QSZZ	8- 51	AD		C	
PSHEP0035YSZZ	8- 24	AB		A	
PSHEP0050QSZ1	15- 3	AD		C	
PSHEP0051QSZZ	15- 5	AB		C	
PSHEP0052QSZZ	15- 9	AB		C	
PSHEP0135QSZ1	7- 35	AB		C	
PSHEP0262QSZZ	8- 9	AC		C	
PSHEP0324QSZZ	8- 47	AC		C	
PSHEZ0056QSZZ	6- 49	AC		C	
PSHEZ0099QSZZ	13- 35	AC		C	
PSHEZ0105QSZZ	9- 46	AC		C	
PSHEZ0125QSZZ	15- 19	AE		C	
PSHEZ0133QSZZ	11- 23	AD		C	
PSHEZ0135QSZZ	12- 64	AC		C	
PSHEZ0140QSZ1	12- 79	AE		C	
PSHEZ0152QSZZ	4- 58	AD		C	
PSHEZ0209QSZZ	4- 60	AB		C	
PSHEZ0217QSZZ	4- 72	AC		C	
PSHEZ0220QSZ1	1- 9	AK		C	
PSHEZ0241QSZZ	13- 37	AB		C	
PSHEZ0273QSZZ	4- 71	AB		C	
PSHEZ0378QSZZ	11- 28	AG		C	
PSHEZ0408QSZZ	12- 69	AC		C	
PSHEZ0410QSZZ	13- 66	AC		C	
PSHEZ0418QSZZ	4- 63	AC		C	
PSHEZ0420QSZZ	4- 66	AC		C	
PSHEZ0421QSZZ	12- 67	AC		C	
PSHEZ0426QSZZ	4- 67	AB		C	
PSHEZ0434QSZZ	15- 20	AC		C	
PSHEZ0435QSZ1	15- 23	AA		C	

PARTS CODE	NO.	PRICE RANK	NEW MARK	PART RANK	
PSHEZ0440QSZZ	4- 52	AC		C	
PSHEZ0441QSZZ	16- 2	AD		C	
PSHEZ0446QSZZ	14- 21	AB		C	
PSHEZ0448QSZZ	12- 73	AA		C	
"	4- 53	AA		C	
PSHEZ0449QSZZ	14- 22	AB		C	
PSHEZ0465QSZZ	4-106	AC		C	
PSHEZ0501QSZZ	7- 36	AD		C	
PSHEZ0502QSZZ	7- 37	AD		C	
PSHT-0004QSZ1	7- 27	AC		C	
PSPAP0036QSZZ	8- 46	AC		C	
PSPAZ0011QSZZ	5- 15	AD		C	
PSPAZ0040QSZZ	15- 24	AB		C	
PSPAZ0696FCZZ	7- 23	AC		C	
PTME-0012QSZZ	10- 15	AC		C	
PTME-0014QSZZ	9- 51	AK		A	
PTME-0020GCZ1	9- 19	AF		A	
PTME-0027QSZZ	16- 6	AL		C	
PTME-0028QSZZ	16- 10	AL		C	
PTME-0032QSZ1	10- 8	AD		C	
PTME-0033QSZZ	7- 15	AK		A	
PTME-0178FCZZ	13- 31	AC		C	
PTME-0179FCZZ	13- 30	AC		C	
PTPE-0050QSZZ	4- 79	AA		C	
PTPE-0051QSZZ	4- 70	AC		C	
PWiR-0005QSP1	4- 3	AZ		C	
PWiR-0006QSPZ	4- 1	AZ		C	
【Q】					
QACCEr624QCPZ	12- 18	AW		B	
QCNCM0999FCZZ	10- 40	AC		C	
QSLP-0008QSZZ	15- 14	AD		C	
QSLP-0009QSZZ	15- 11	AD		C	
QSW-B0017QSZZ	11- 1	AF		B	
QTANN0015FCZZ	12- 49	AG		C	
【R】					
RCORF0018QSZZ	12- 76	AR		C	
"	4- 59	AR		C	
RCORF0027QSZZ	12- 74	AN		C	
RDENC0008QS11	12- 11	BG		E	
RDENC0010QS11	12- 8	BQ		E	
RDTCM0017QSZZ	8- 31	AY		B	
RDTCT0005QSZ1	9- 16	AN		B	
RiNV-0002QSZZ	4- 82	AU		B	
RLMPD0032QSZZ	4- 91	AZ		B	
RLMPU0016QSZZ	9- 6	BA		B	
RMOTD0035QSPZ	6- 5	AX		B	
RMOTN0022QSPA	6-101	BL		B	
RMOTP0044QSPA	10- 7	BH		B	
RMOTS0041QSZZ	4- 30	BA		B	
RPLU-0007QSZ1	13- 28	AM		B	
RPLU-0008QSZ1	10- 16	AM		B	
RPLU-0009QSZ1	10- 10	AM		B	
RTHM-0001QSZZ	9- 2	AM		B	
【S】					
SPAKA0134QSZZ	17- 7	AE		D	
SPAKA0463QSZZ	17- 3	AV		D	
SPAKA0464QSZZ	17- 2	AV		D	
SPAKA0465QSZZ	17- 18	BE		D	
SPAKA0466QSZZ	17- 13	AG		D	
SPAKC0462QS24	17- 1	BB	N	D	
SSAKA2343QCZZ	17- 19	AA		D	
SSAKA3001CCZZ	17- 14	AA		D	
SSAKZ0003QSZZ	17- 5	AF		D	
【T】					
TCADZ0010QSZZ	17- 8	AC		D	
TCAUA0770FCZZ	1- 59	AB		D	
TCAUH0007QSZZ	6- 53	AD		D	
TiNSA1471QSZZ	17- 28	BB	N	D	
TiNSE1470QSZZ	17- 28	BC	N	D	
TiNSE1473QSZZ	17- 29	AU	N	D	
TiNSE1476QSZZ	17- 31	AT	N	D	
TiNSX1475QSZZ	17- 30	AG	N	D	
TLABH0062QSZZ	9- 39	AE		D	
TLABH0064QSZ1	16- 8	AC		D	
TLABH0065QSZZ	17- 22	AG		D	
TLABH0068QSZ1	17- 21	AF		D	
TLABH0364QSZZ	9- 57	AA		D	
TLABH0458QSZZ	1- 44	AF		D	
TLABZ0058QSZZ	1- 49	AD		D	
TLABZ4335FCZZ	4- 96	AB		D	
TLABZ4868FCZZ	12- 80	AC		D	

PARTS CODE	NO.	PRICE RANK	NEW MARK	PART RANK	
TTAG-0009QSZZ	16- 19	AC		D	
"	17- 11	AC		D	
【U】					
UCLEZ0009QSZZ	7- 3	AQ		A	
【V】					
VHPGP1S73P+-1	11- 61	AF		B	
VRH-ST2HB157K	9- 49	AD		C	
【X】					
XBBS730P04000	10- 17	AA		C	
XBBS730P06000	9- 22	AC		C	
XBBS730P08000	4- 23	AA		C	
XBBS730P10000	13- 34	AA		C	
XBBS740P08000	10- 6	AA		C	
XBBS740P10000	8- 10	AA		D	
XBPBZ30P03000	8- 29	AB		C	
XBPS720P09000	12- 71	AB		C	
XBPS730P05K00	4- 29	AA		C	
XBPS730P06KS0	8- 35	AB		C	
"	9- 1	AB		C	
XBPS730P08KS0	12- 10	AB		C	
"	9- 9	AB		C	
XBPS730P10KS0	6- 42	AB		C	
"	9- 15	AB		C	
XBPS730P32KS0	12- 7	AC		C	
XBPS740P06K00	4- 5	AA		C	
XBPS740P06KS0	5- 3	AB		C	
XBPS740P16KS0	4- 31	AB		C	
XBPSC30P06ES0	6- 9	AA		C	
XBPSC30P06K00	15- 22	AA		C	
XBPSN40P06K00	12- 17	AA		C	
XEBS720P06000	14- 13	AC		C	
XEBS730P06000	12- 59	AA		C	
"	15- 17	AA		C	
"	6- 23	AA		C	
"	6- 31	AA		C	
"	9- 21	AA		C	
XEBS730P08000	11- 11	AC		C	
"	12- 66	AC		C	
"	13- 38	AC		C	
"	13- 43	AC		C	
"	13- 52	AC		C	
"	14- 2	AC		C	
"	15- 1	AC		C	
"	16- 12	AC		C	
"	2- 16	AC		C	
"	2- 21	AC		C	
"	6- 16	AC		C	
"	8- 19	AC		C	
"	8- 2	AC		C	
XEBS730P10000	12- 27	AC		C	
"	13- 18	AC		C	
"	3- 7	AC		C	
"	6- 18	AC		C	
"	6- 6	AC		C	
"	7- 1	AC		C	
"	8- 39	AC		C	
XEBS730P12000	11- 68	AC		C	
XEBS730P18000	12- 46	AB		C	
XEBS740P10000	12- 3	AA		C	
"	1- 24	AA		C	
"	1- 4	AA		C	
"	16- 21	AA		C	
XEBS740P12000	11- 22	AA		C	
"	12- 15	AA		C	
"	12- 55	AA		C	
XEBS830P06000	4- 93	AB		C	
XEPS723P12000	6- 1	AA		C	
XEPS730P14X00	6- 64	AB		C	
XEPS740P12000	11- 7	AB		C	
XEPS740P30000	12- 54	AC		C	
XHBS730P06000	1- 20	AC		C	
"	12- 13	AC		C	
"	4- 6	AC		C	
"	6- 65	AC		C	
"	9- 4	AC		C	
XHBS730P08000	10- 2	AB		C	
"	1- 17	AB		C	
"	12- 29	AB		C	
"	12- 43	AB		C	
"	2- 18	AB		C	
"	9- 62	AB		C	



#### CAUTION FOR BATTERY REPLACEMENT

- (Danish) **ADVARSEL !**  
Lithiumbatteri - Eksplosionsfare ved fejlagtig håndtering.  
Udskiftning må kun ske med batteri  
af samme fabrikat og type.  
Levér det brugte batteri tilbage til leverandoren.
- (English) **Caution !**  
Danger of explosion if battery is incorrectly replaced.  
Replace only with the same or equivalent type  
recommended by the manufacturer.  
Dispose of used batteries according to manufacturer's instructions.
- (Finnish) **VAROITUS**  
Paristo voi räjähtää, jos se on virheellisesti asennettu.  
Vaihda paristo ainoastaan laitevalmistajan suosittelemaan  
tyyppiin. Hävitä käytetty paristo valmistajan ohjeiden  
mukaisesti.
- (French) **ATTENTION**  
Il y a danger d'explosion s'il y a remplacement incorrect  
de la batterie. Remplacer uniquement avec une batterie du  
même type ou d'un type équivalent recommandé par  
le constructeur.  
Mettre au rebut les batteries usagées conformément aux  
instructions du fabricant.
- (Swedish) **VARNING**  
Explosionsfara vid felaktigt batteribyte.  
Använd samma batterityp eller en ekvivalent  
typ som rekommenderas av apparattillverkaren.  
Kassera använt batteri enligt fabrikantens  
Instruktion.
- (German) **Achtung**  
Explosionsgefahr bei Verwendung inkorrekt der Batterien.  
Als Ersatzbatterien dürfen nur Batterien vom gleichen Typ oder  
vom Hersteller empfohlene Batterien verwendet werden.  
Entsorgung der gebrauchten Batterien nur nach den vom  
Hersteller angegebenen Anweisungen.

#### CAUTION FOR BATTERY DISPOSAL

(For USA, CANADA)

"BATTERY DISPOSAL"  
THIS PRODUCT CONTAINS A LITHIUM PRIMARY  
(MANGANESE DIOXIDE) MEMORY BACK-UP BATTERY  
THAT MUST BE DISPOSED OF PROPERLY. REMOVE THE  
BATTERY FROM THE PRODUCT AND CONTACT YOUR  
LOCAL ENVIRONMENTAL AGENCIES FOR INFORMATION  
ON RECYCLING AND DISPOSAL OPTIONS.

"TRAITEMENT DES PILES USAGÉES"  
CE PRODUIT CONTIENT UNE PILE DE SAUVEGARDE DE  
MÉMOIRE LITHIUM PRIMAIRE (DIOXYDE DE MANGANESE)  
QUI DOIT ÊTRE TRAITÉE CORRECTEMENT. ENLEVEZ LA  
PILE DU PRODUIT ET PRENEZ CONTACT AVEC VOTRE  
AGENCE ENVIRONNEMENTALE LOCALE POUR DES  
INFORMATIONS SUR LES MÉTHODES DE RECYCLAGE ET  
DE TRAITEMENT.

# SHARP

**COPYRIGHT © 2005 BY SHARP CORPORATION**

All rights reserved.

Printed in Japan.

No part of this publication may be reproduced,  
stored in a retrieval system, or transmitted.

In any form or by any means,  
electronic, mechanical, photocopying, recording, or otherwise,  
without prior written permission of the publisher.

**SHARP CORPORATION**  
**Digital Document Systems Group**  
**Quality Enhancement Center**  
**Yamatokoriyama, Nara 639-1186, Japan**  
2005 May Printed in Japan ⓘ