

DIGITAL MULTIFUNCTIONAL SYSTEM/DIGITAL COPIER

MODEL **MX-B200**

CONTENTS

- | | |
|---------------------------------------|-----------------------------------|
| 1 Exteriors | 15 TC case unit |
| 2 Original cover unit | 16 250 sheets tray |
| 3 Operation panel | 17 Harness |
| 4 Side door unit | 18 Process unit |
| 5 Optical frame | 19 DV cartridge unit |
| 6 LSU section | 20 Packing material & accessories |
| 7 Middle frame | |
| 8 Base plate unit 1 | |
| 9 Base plate unit 2 | |
| 10 Fusing unit | |
| 11 Drive unit | |
| 12 Multi manual paper feed cover unit | |
| 13 Multi manual paper feed unit | |
| 14 Socket holder unit | |

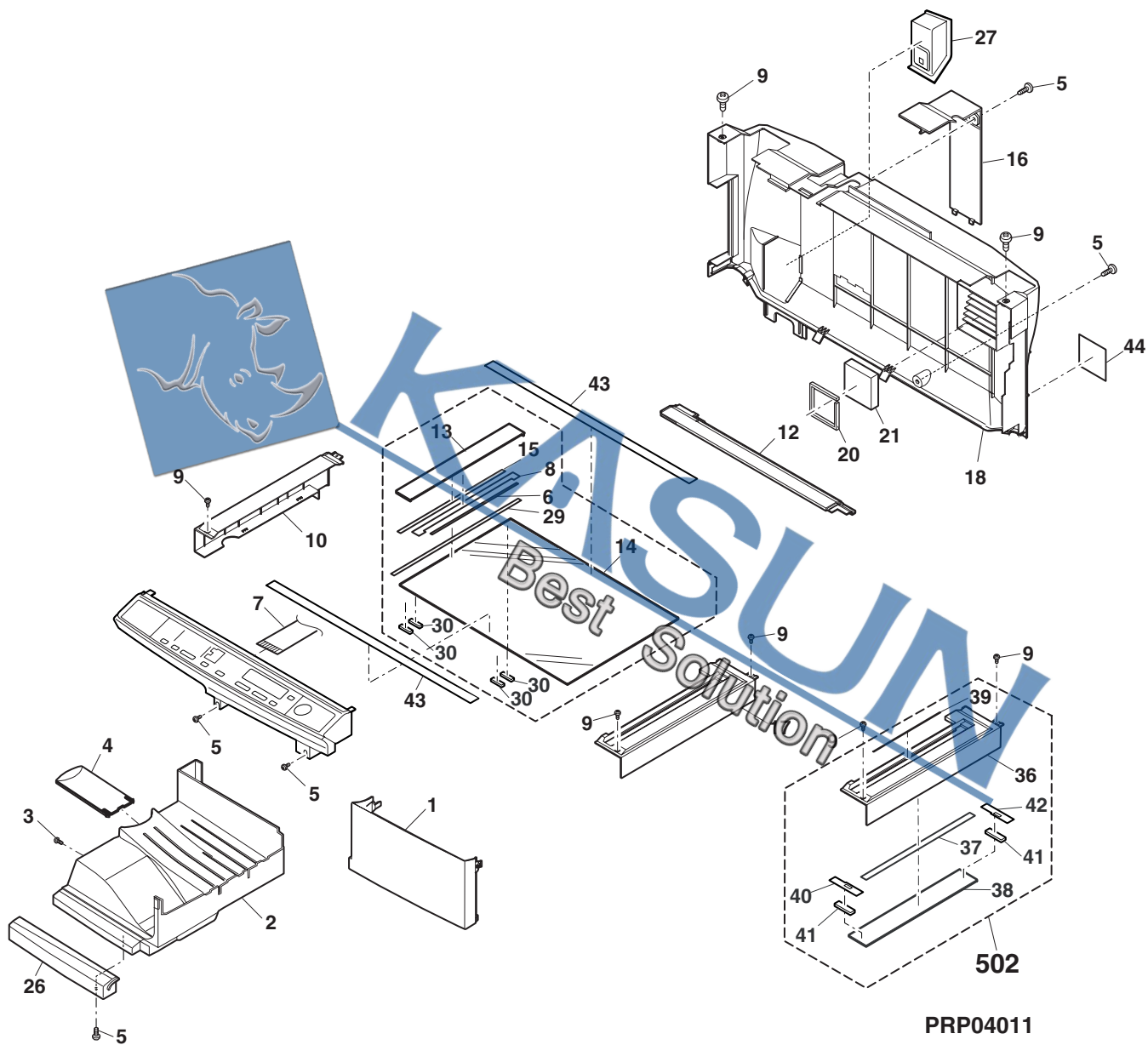
The definition of each Rank is as follows and also noted in the list

Rank C : Parts other than the above (excluding sub components of PWB)

○ For U.S. only-Use order codes provided in advertising literature. Do not order from parts department.

[illegible]

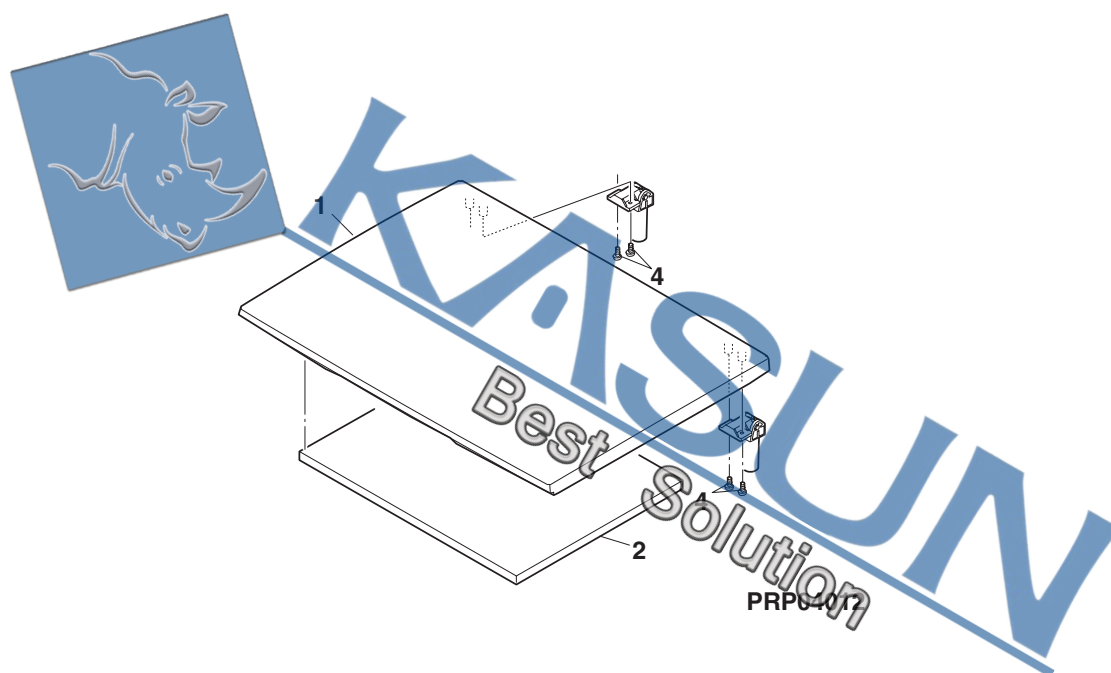
1 Exteriors



2 Original cover unit

NO.	PARTS CODE	PRICE RANK	NEW MARK	PART RANK	DESCRIPTION
1	GCOVH0072QSA1	AW		D	OC cover
2	PSHEZ0593QSZ3	AN	N	D	OC mat J3
4	XEBS740P10000	AA		C	Screw(4×10)
	(Unit)				
901	CCOVH0072RS52	BB	N	E	OC cover unit

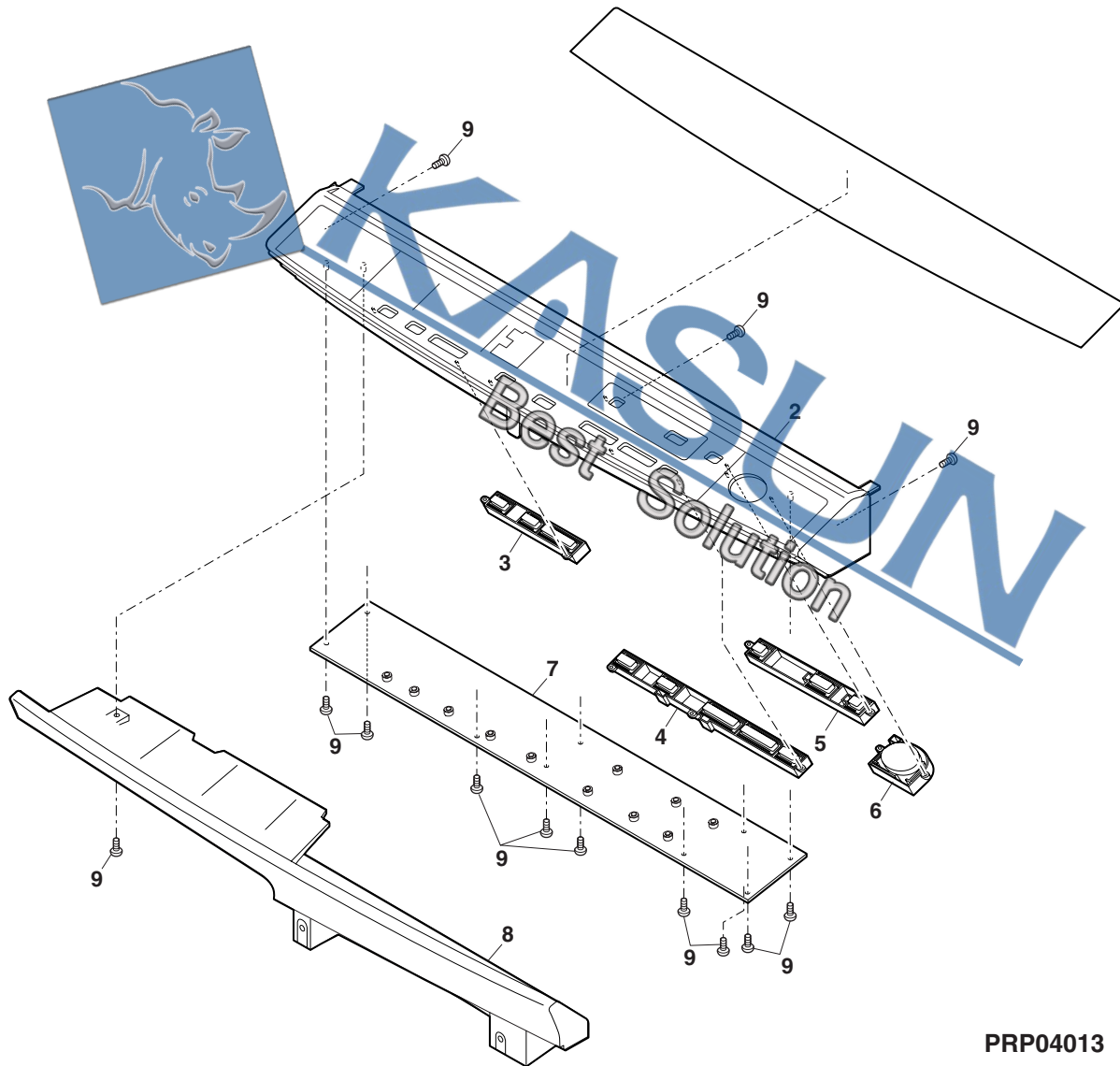
2 Original cover unit



3 Operation panel

NO.	PARTS CODE	PRICE RANK	NEW MARK	PART RANK	DESCRIPTION
2	GCAB-0106QSAZ	AQ	N	D	Operation panel
3	JBTN-0095QSAZ	AE	N	D	Operation key C
4	JBTN-0094QSAZ	AF	N	D	Operation key B
5	JBTN-0093QSA1	AE	N	D	Operation key A
6	CBTN-0090QS02	AK		E	Start key AS
7	CPWBF0245QS34	BS		E	Operation PWB
8	GCAB-0105QSAZ	AR	N	D	Operation cabinet
9	XEBS730P08000	AC		C	Screw(3×8)

3 Operation panel

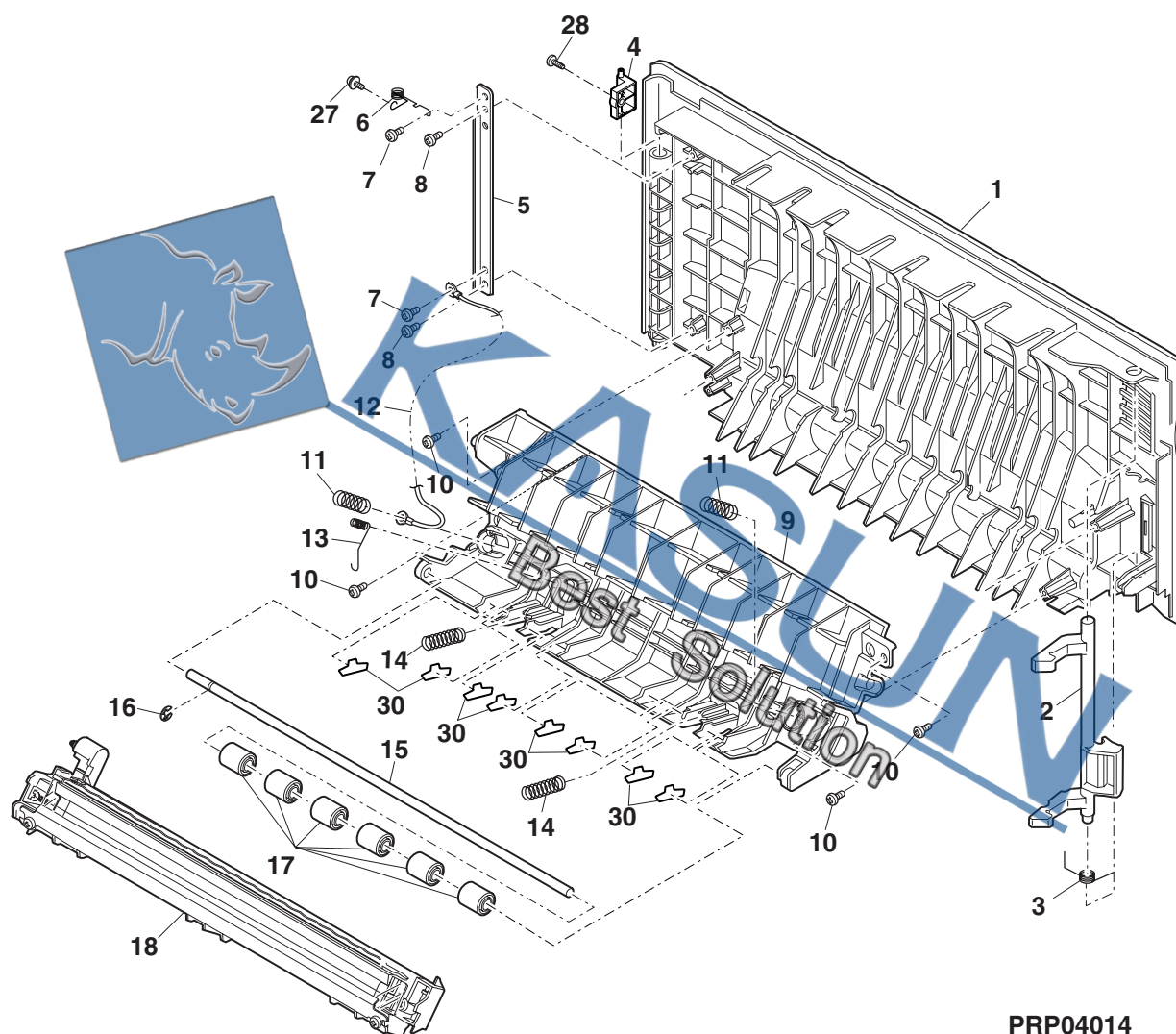


PRP04013

4 Side door unit

[illegible]

4 Side door unit

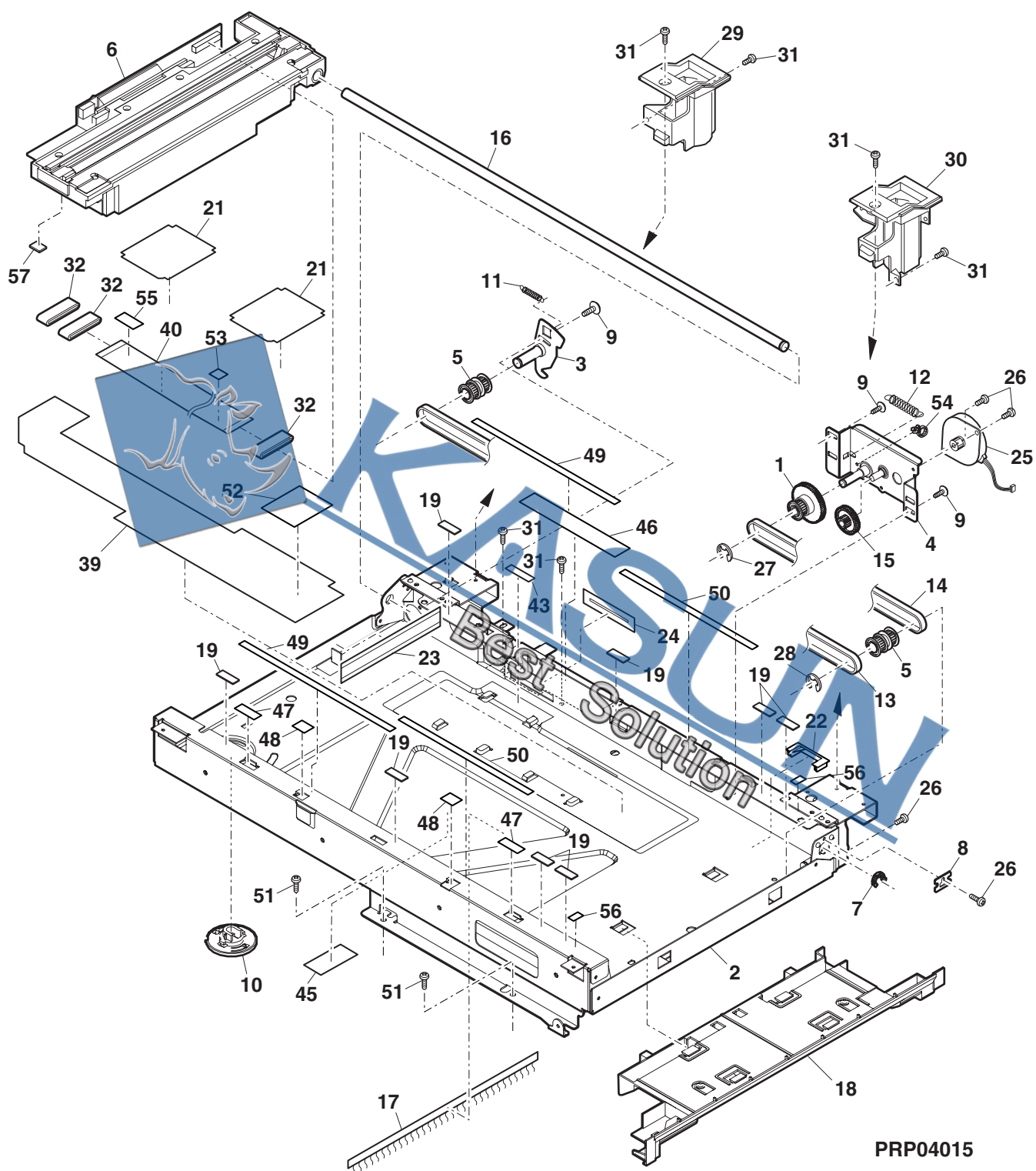


PRP04014

5 Optical frame

[illegible]

5 Optical frame

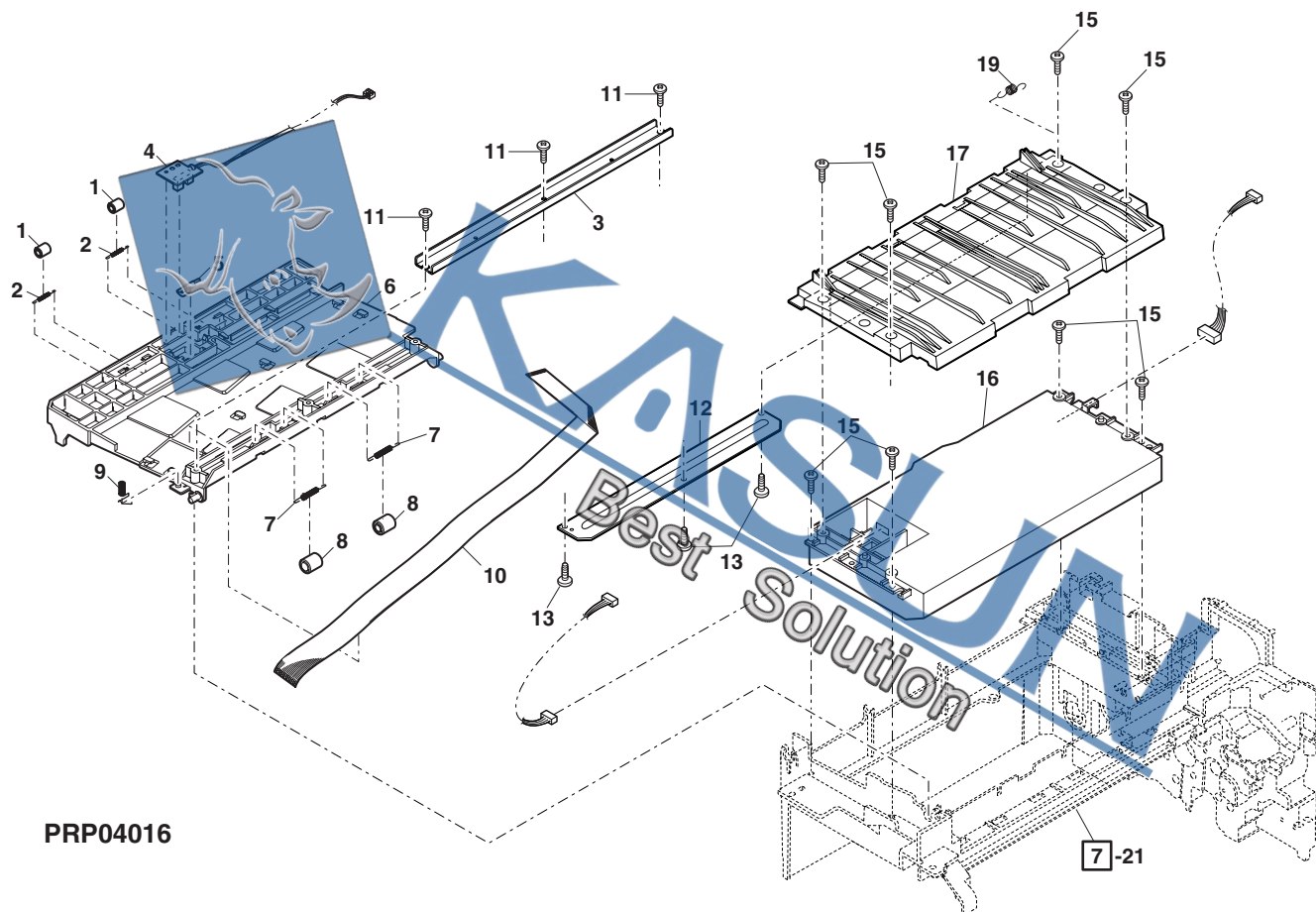


PRP04015

6 LSU section

[illegible]

6 LSU section



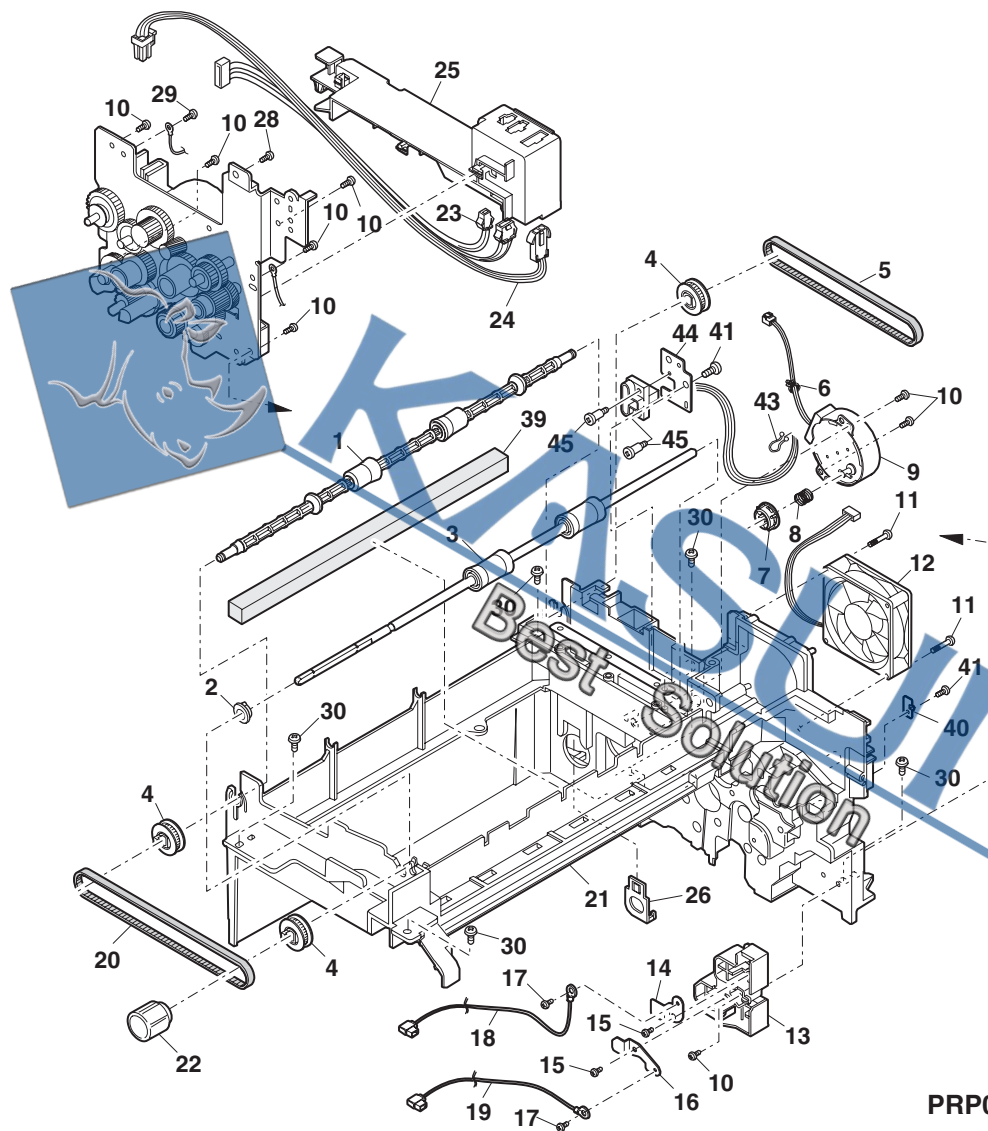
PRP04016

[7]-21

7 Middle frame

[illegible]

7 Middle frame

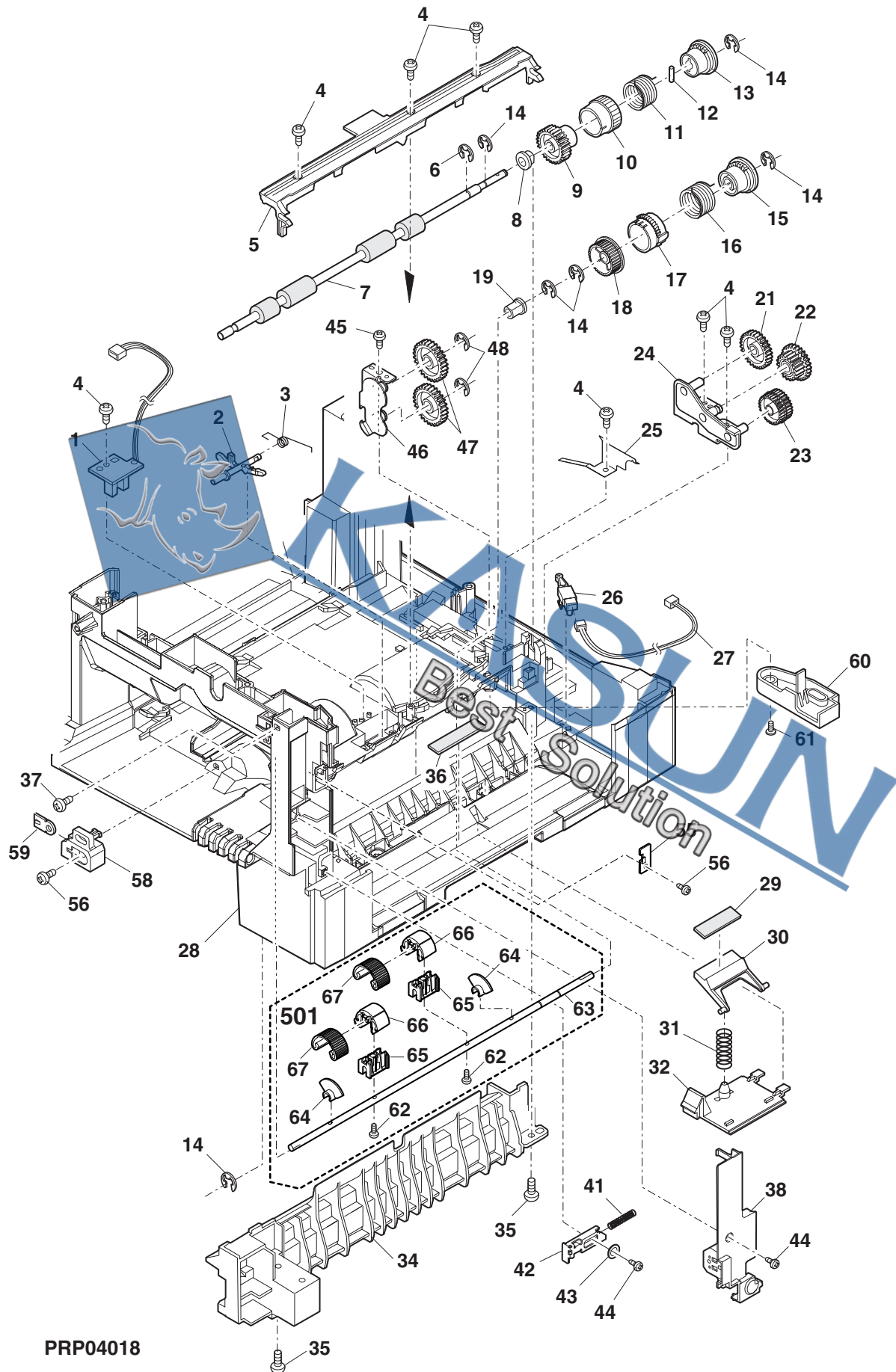


PRP04017

8 Base plate unit 1

[illegible]

8 Base plate unit 1

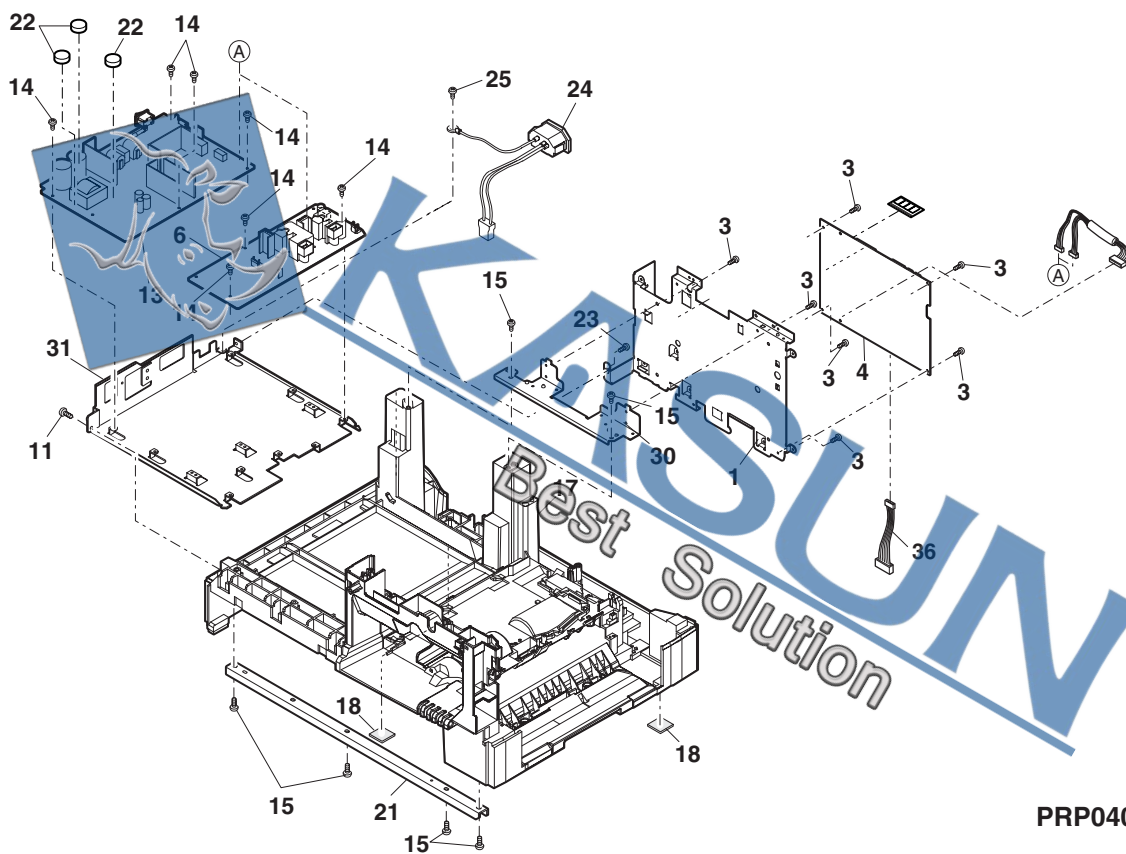


PRP04018

9 Base plate unit 2

[illegible]

9 Base plate unit 2

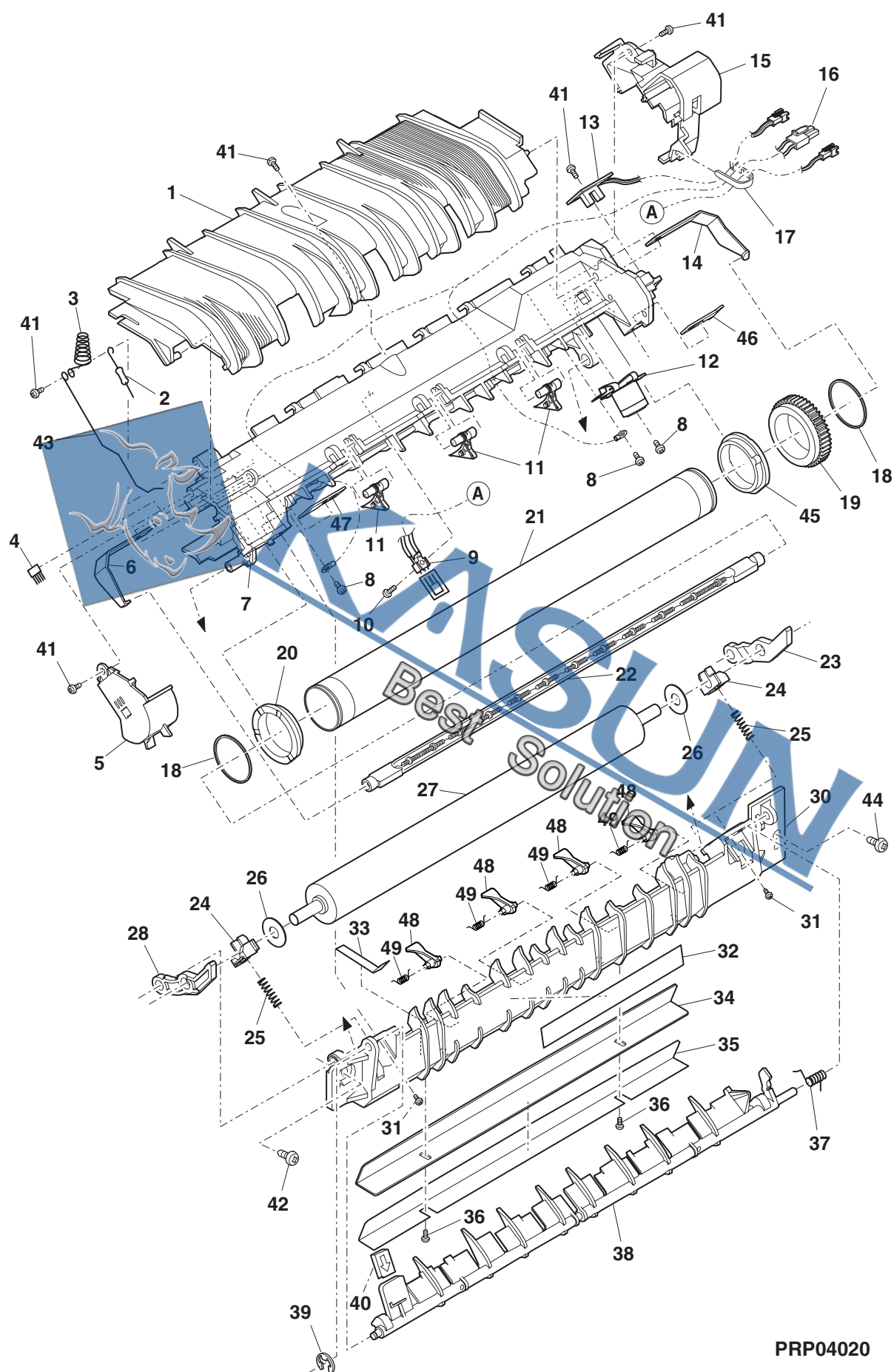


PRP04019

10 Fusing unit

[illegible]

10 Fusing unit

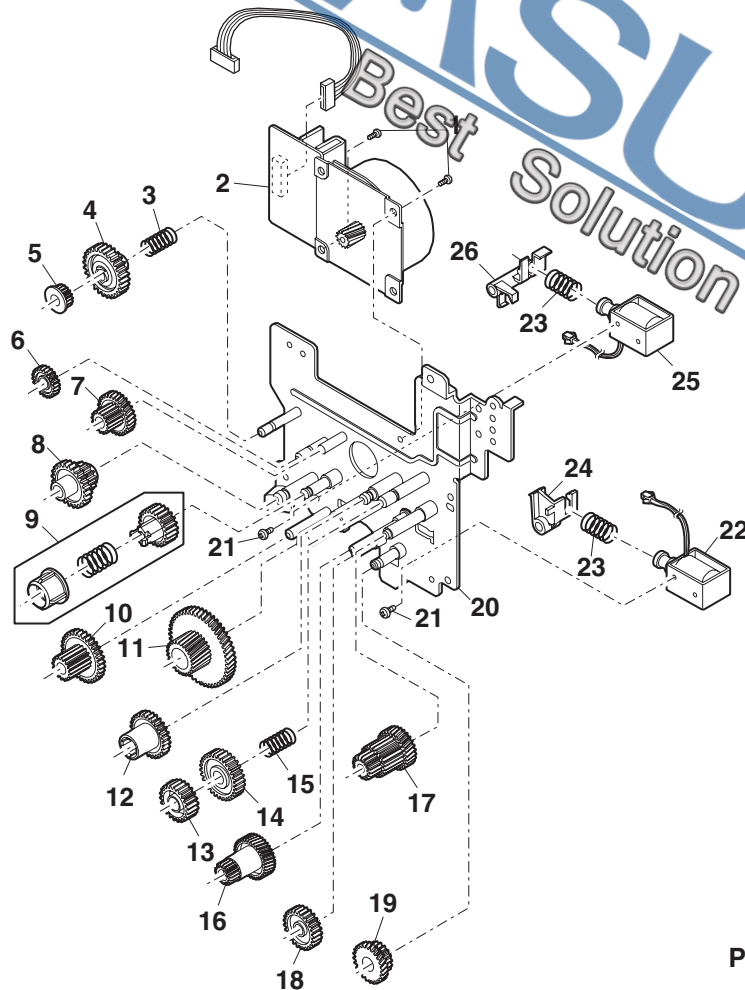


PRP04020

11 Drive unit

NO.	PARTS CODE	PRICE RANK	NEW MARK	PART RANK	DESCRIPTION
1	XBBS740P06000	AA		C	Screw(4×6)
2	RMOTP0061QSPZ	BS		B	Main motor
3	MSPRC0053QSZ1	AC		C	Pulley spring
4	NGERH0050QSZZ	AD		C	Ratchet gear(33T)
5	NPLYZ0002QSZZ	AC		C	Pulley(17T)
6	NGERH0010QSZZ	AD		C	Gear(28T)
7	NGERH0009QSZZ	AD		C	Gear(46/16T)
8	NGERH0014QSZZ	AD		C	Gear(30/15T)
9	CGERH0011RS51	AE		E	MG gear unit
10	NGERH0015QSZZ	AD		C	Gear(37/15T)
11	NGERH0007QSZZ	AH		C	Gear(68/26T)
12	NGERH0016QSZZ	AD		C	Coupling gear(34T)
13	NGERH0019QSZZ	AC		C	Ratchet gear(21T)
14	NGERH0018QSZZ	AC		C	Ratchet gear(28T)
15	MSPRC0023QSZ1	AC		C	Ratchet spring
16	NGERH0205QSZZ	AF		C	Gear(55/19T)
17	NGERH0017QSZZ	AD		C	Gear(33/20/15T)(33/20/15T)
18	NGERH0012QSZZ	AE		C	Gear(20T)
19	NGERH0013QSZZ	AG		C	Gear(31/17T)
20	CPLTM0042QS04	AX		C	Main drive plate
21	XBBS730P04000	AA		C	Screw(3×4)
22	RPLU-0035QSPZ	AL		B	Solenoid
23	MSPRC1318FCZ1	AA		C	Manual paper feed spring B
24	PTME-0035QSZZ	AC		C	PS roller pawl
25	RPLU-0002QSPZ	AN		B	Solenoid
26	PTME-0003QSZZ	AD		C	Roller pawl
	(Unit)				
901	CPLTM0042RS61	BH		E	Main drive unit [Except No.27]

11 Drive unit

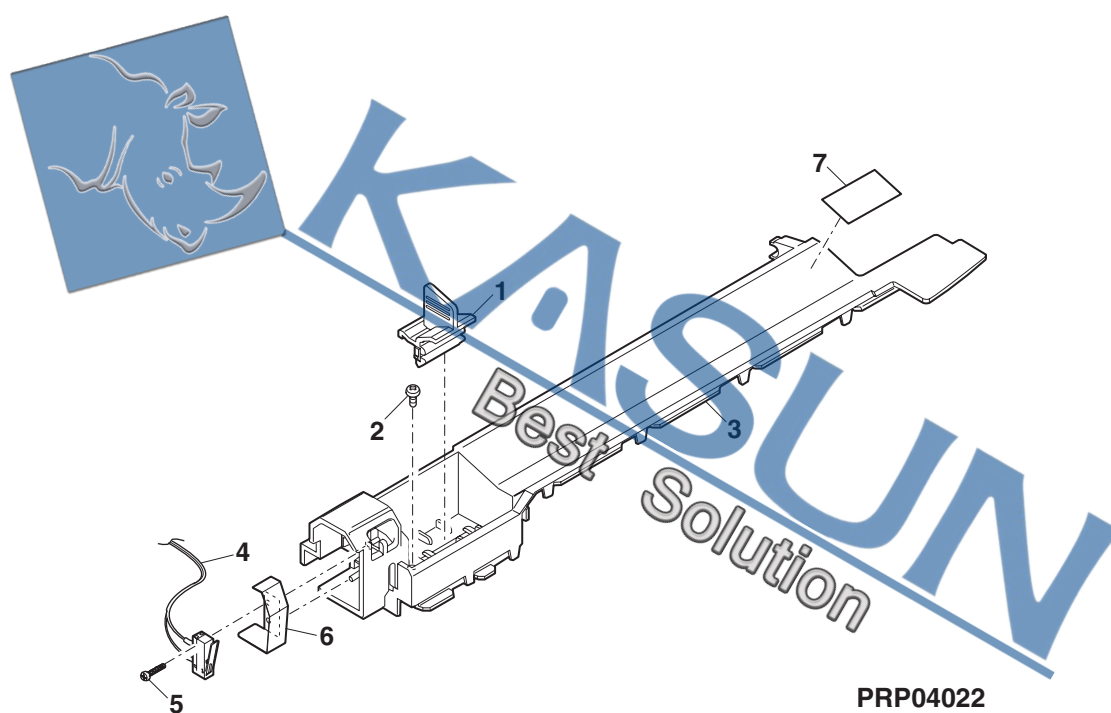


PRP04021

12 Multi manual paper feed cover unit

NO.	PARTS CODE	PRICE RANK	NEW MARK	PART RANK	DESCRIPTION
1	CCL EZ 0005RS51	AQ		A	Charger cleaner unit
2	XEB S730P08000	AC		C	Screw(3×8)
3	PCOV P0023QSJ1	AH		D	Multi upper cover
4	CSW-M0016RS51	AG		B	Side door detect switch unit
5	XEPS720P10000	AA		C	Screw(2×10)
6	MSPRP0110QSZ2	AC		C	Door switch spring
7	PSHEZ0075QSZZ	AC		C	Multi upper guide sheet

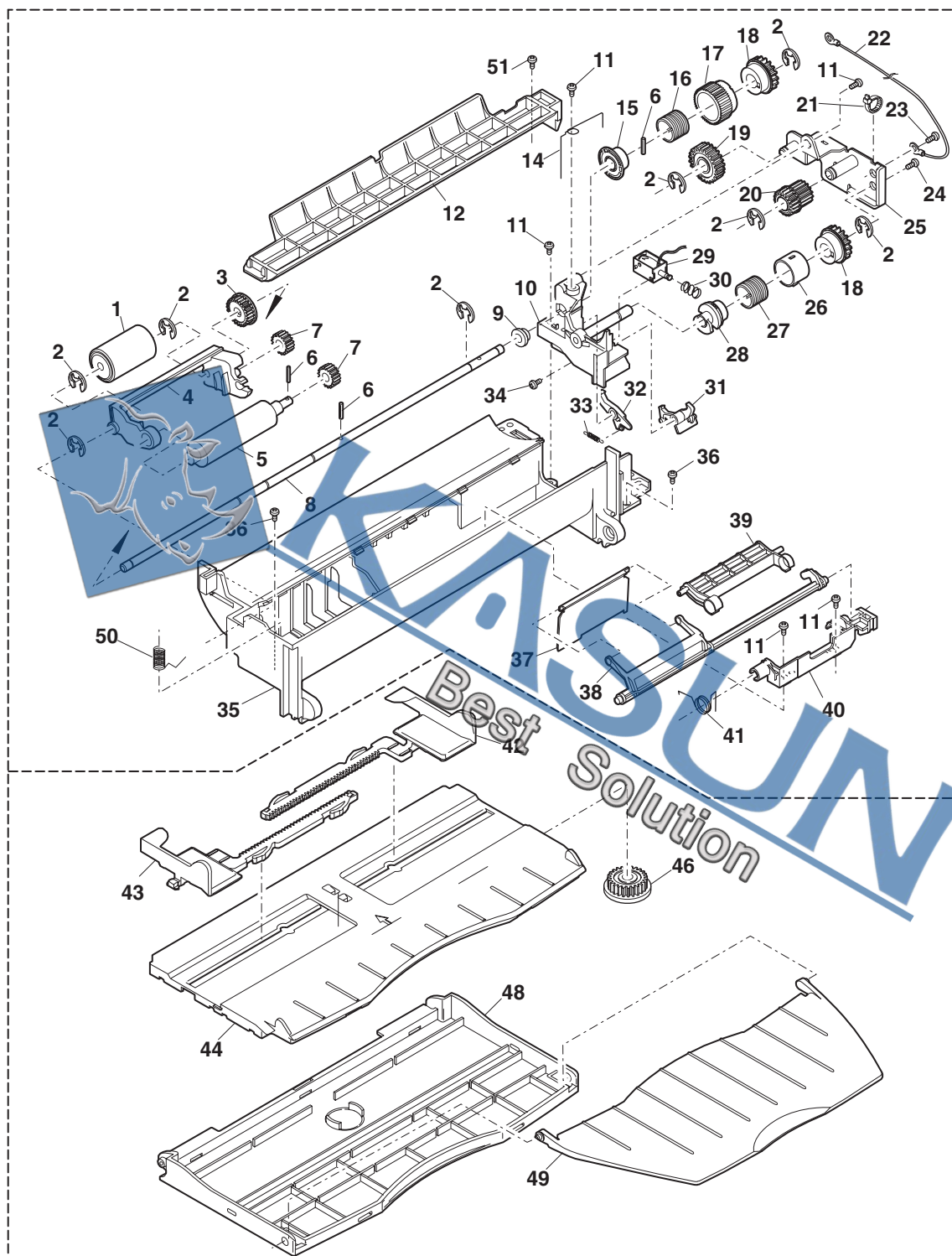
12 Multi manual paper feed cover unit



13

[illegible]

13 Multi manual paper feed unit

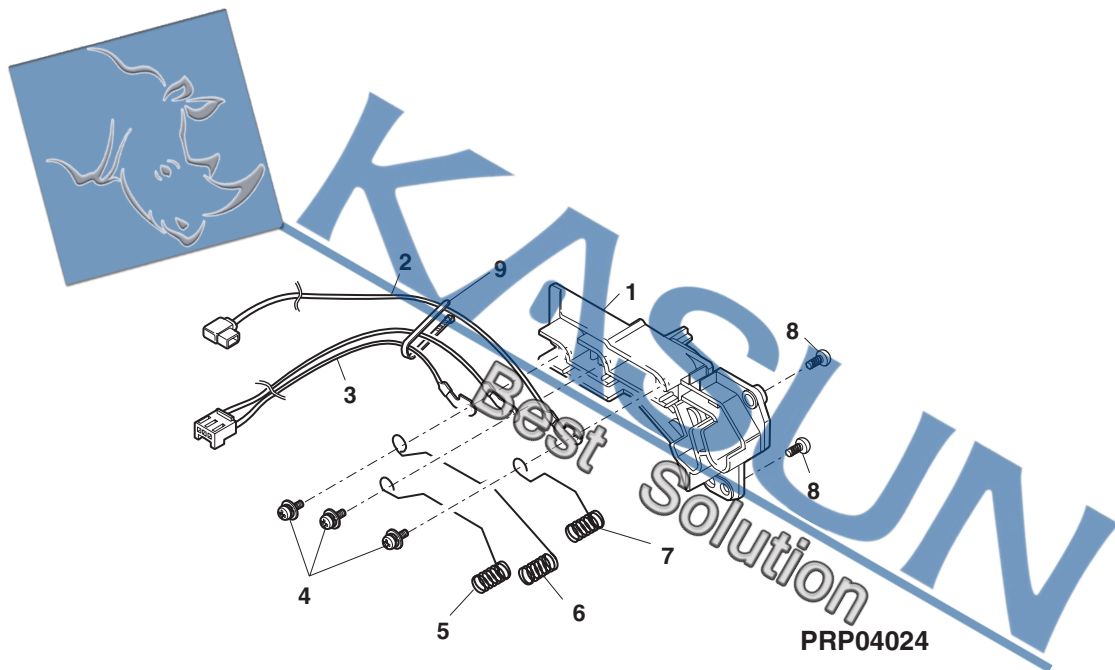


PRP04023

14 Socket holder unit

NO.	PARTS CODE	PRICE RANK	NEW MARK	PART RANK	DESCRIPTION
1	LHLDZ0009QSDZ	AG		C	High voltage interface holder
2	CHAI-0515RS51	AH		C	MC harness unit
3	CHAI-0273RS51	AN		C	GB-MCFB harness unit
4	XBPSN30P06ES0	AB		C	Screw(3×6ES)
5	MSPRC0371QSZZ	AC		C	High voltage terminal spring
6	MSPRC0372QSZZ	AD		C	High voltage terminal spring
7	MSPRC0370QSZZ	AC		C	High voltage terminal spring
8	XEBS730P08000	AC		C	Screw(3×8)
9	LBNDJ0013FCZ1	AE		C	Wire band

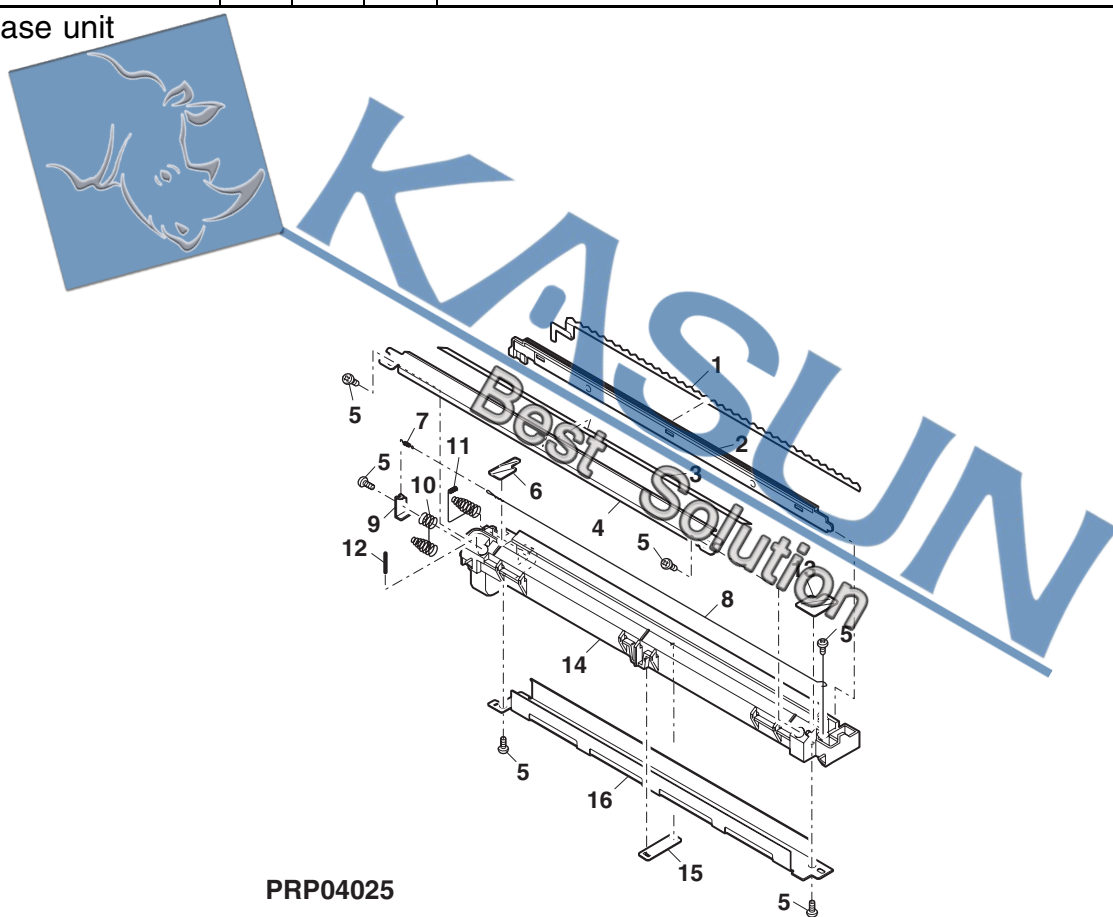
14 Socket holder unit



15 TC case unit

NO.	PARTS CODE	PRICE RANK	NEW MARK	PART RANK	DESCRIPTION
1	PSHEZ0018QSZZ	AF		C	Discharge plate sheet
2	PGIDM0011QSZZ	AE		D	Separator guide
3	PSHEP0019QSZZ	AC		C	TC sheet
4	PGIDH0025QSZZ	AG		D	TC front guide
5	XEBS730P06000	AA		C	Screw(3×6)
6	PSHEP0021QSZZ	AA		C	TC cover sheet R
7	MSPRT0513FCZ1	AA		C	MC tension spring
8	DWIR-0466CSZZ	BE		B	Charger wire
9	QSLP-0007QSZZ	AC		C	TC electrode plate
10	MSPRC0027QSZZ	AC		C	TC electrode spring
11	MSPRC0028QSZZ	AC		C	BC electrode spring
12	MSPRC0051QSZZ	AA		C	Transfer front guide earth spring
13	PSHEP0020QSZZ	AB		C	TC cover sheet F
14	LHLDZ0010QSZZ	AL		C	TC holder
15	LFIX-0004QSZZ	AC		C	Holder fixing plate
16	PCASZ0002QSZZ	AL		D	TC case
	(Unit)				
901	CHLDZ0010RS52	AU		E	TC case unit

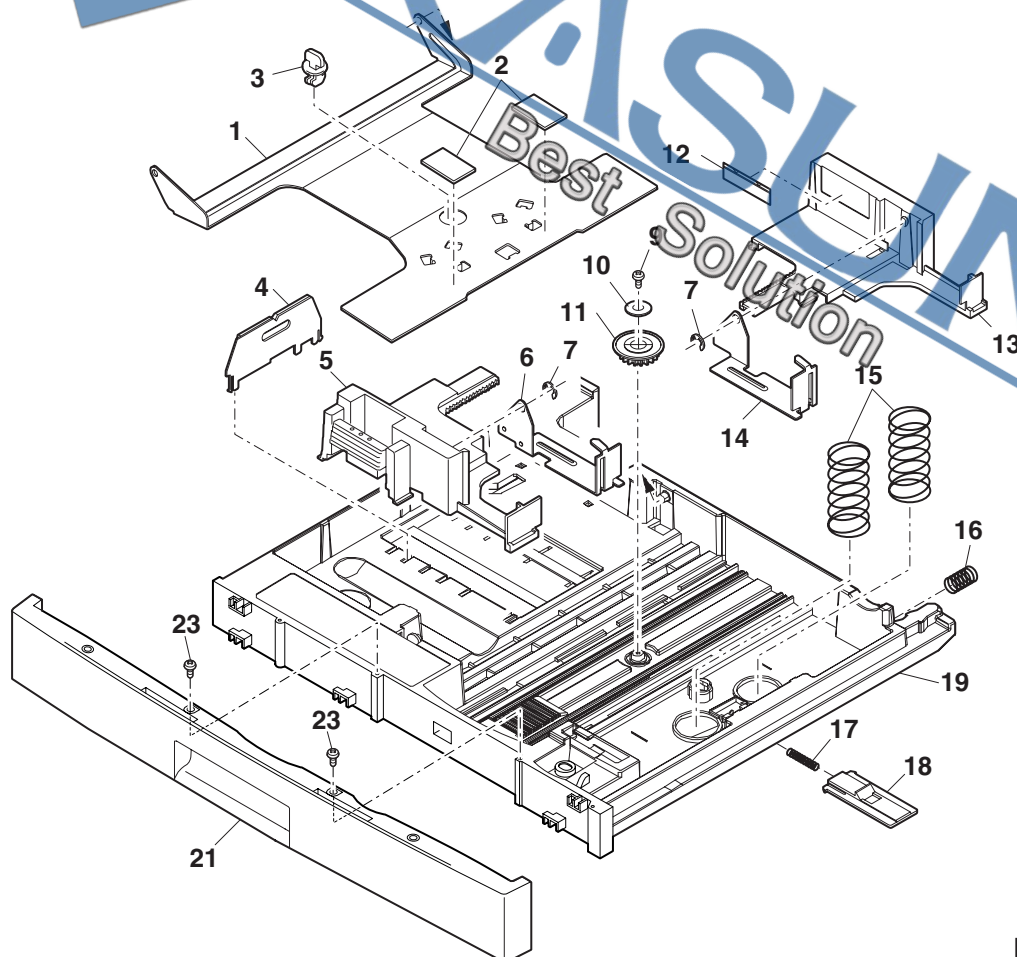
15 TC case unit



16 250 sheets tray

NO.	PARTS CODE	PRICE RANK	NEW MARK	PART RANK	DESCRIPTION
1	LPLTM5106FCZZ	AR		C	Turn plate 250
2	PSHEZ4142FCZ1	AC	N	C	Turn plate sheet
3	LHLDW1226FCZZ	AB		C	Turn fastener
4	LPLTM2642FCG2	AD		C	Tray rear edge plate
5	LPLTP5107FCZ2	AG		C	250 sheets tray side plate F
6	PTME-0037QSZ1	AF		C	250 sheets tray pawl F
7	XRESP40-06000	AA		C	E-ring(E4)
9	XEBS730P08000	AC		C	Screw(3×8)
10	LX-WZ2028SCPZ	AA		C	Washer(φ12)
11	NGERH0193FCZZ	AB		C	Manual paper feed gear
12	TLABZ0546QSZZ	AB		D	Indication label
13	LPLTP5108FCZ2	AG		C	250 sheets tray side plate R
14	PTME-0038QSZ1	AF		C	250 sheets tray pawl R
15	MSPRC0108QSZZ	AC		C	250 sheets tray spring
16	MSPRC1873FCZ1	AB		C	Tray spring
17	MSPRC1145FCZZ	AA		C	Stopper spring
18	LSTPP0161FCZ1	AB		C	Turn plate stopper
19	GCASP0008QSA3	AY	N	D	250 sheets tray case
21	JHNDP0009QSAZ	AT	N	D	Tray cover
23	XEBS740P12000	AA		C	Screw(4×12)
(Unit)					
901	CCASP0008RS56	BC	N	E	250 sheets tray unit

16 250 sheets tray

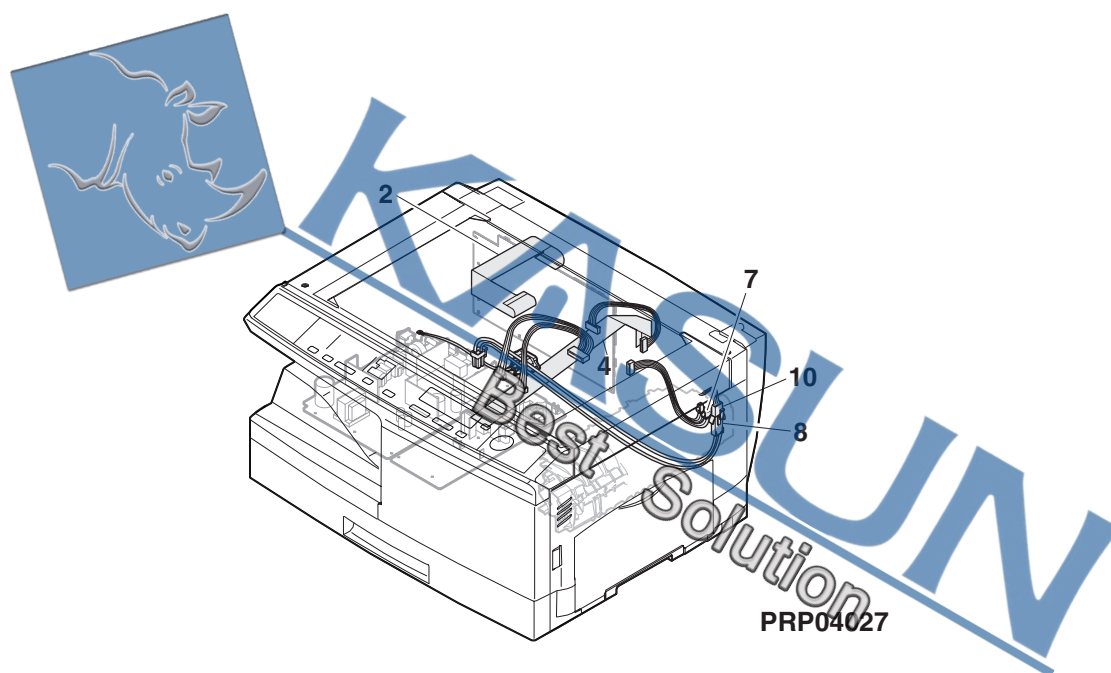


PRP04026

17 Harness

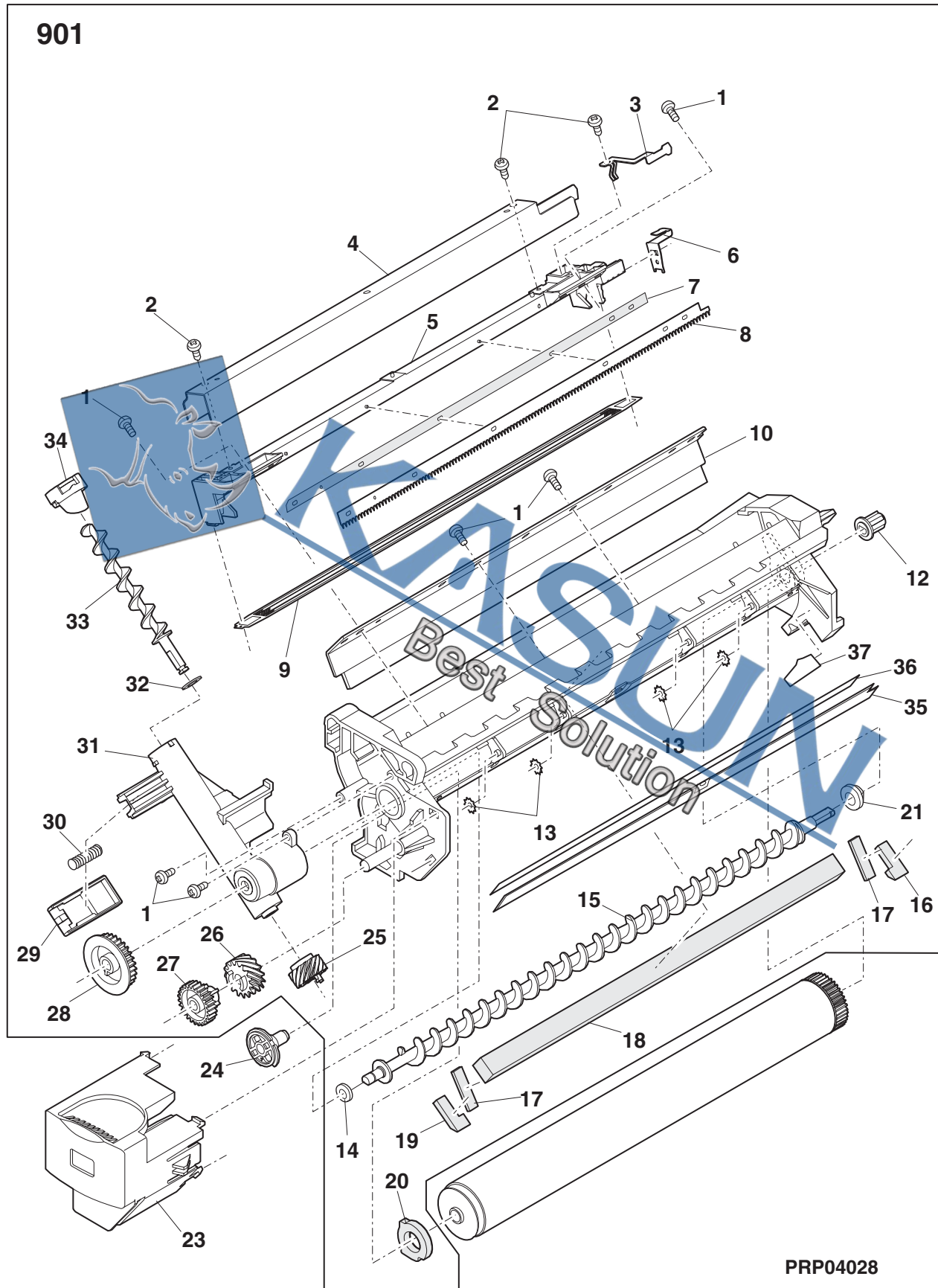
NO.	PARTS CODE	PRICE RANK	NEW MARK	PART RANK	DESCRIPTION
2	DHA i - 0 2 6 8 Q S Z 4	AG		C	CCD-MCU harness
4	DHA i - 0 5 1 3 Q S P Z	AF		C	OP-MCU harness
7	DHA i - 0 2 8 7 Q S Z Z	AF		C	PPD2 interface harness
8	DHA i - 0 5 3 6 Q S P Z	AL		C	Heater lamp harness 1 200
10	DHA i - 0 5 3 7 Q S P Z	AL		C	Heater lamp harness 2 200

17 Harness



18

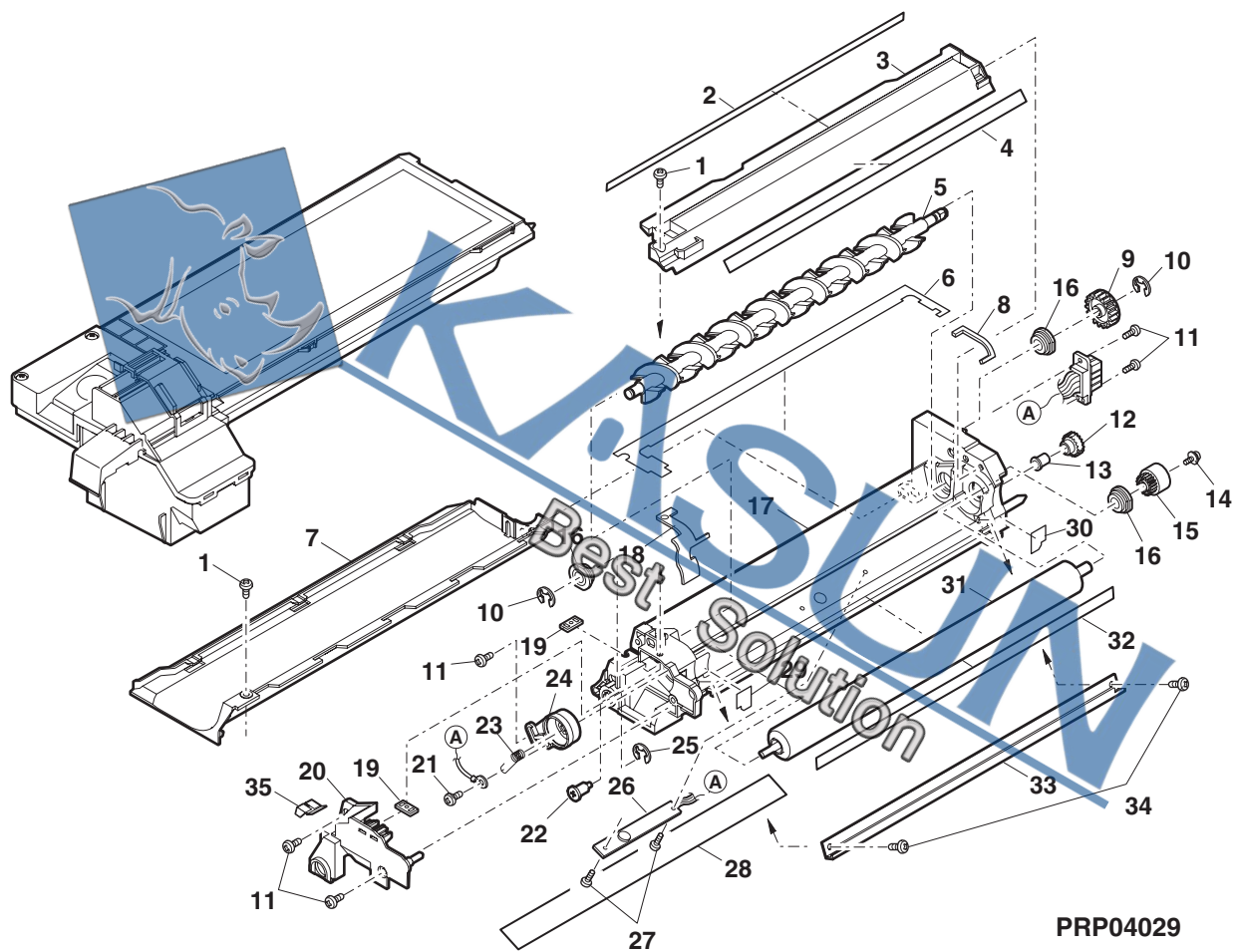
Best Solution



19 DV cartridge unit

[illegible]

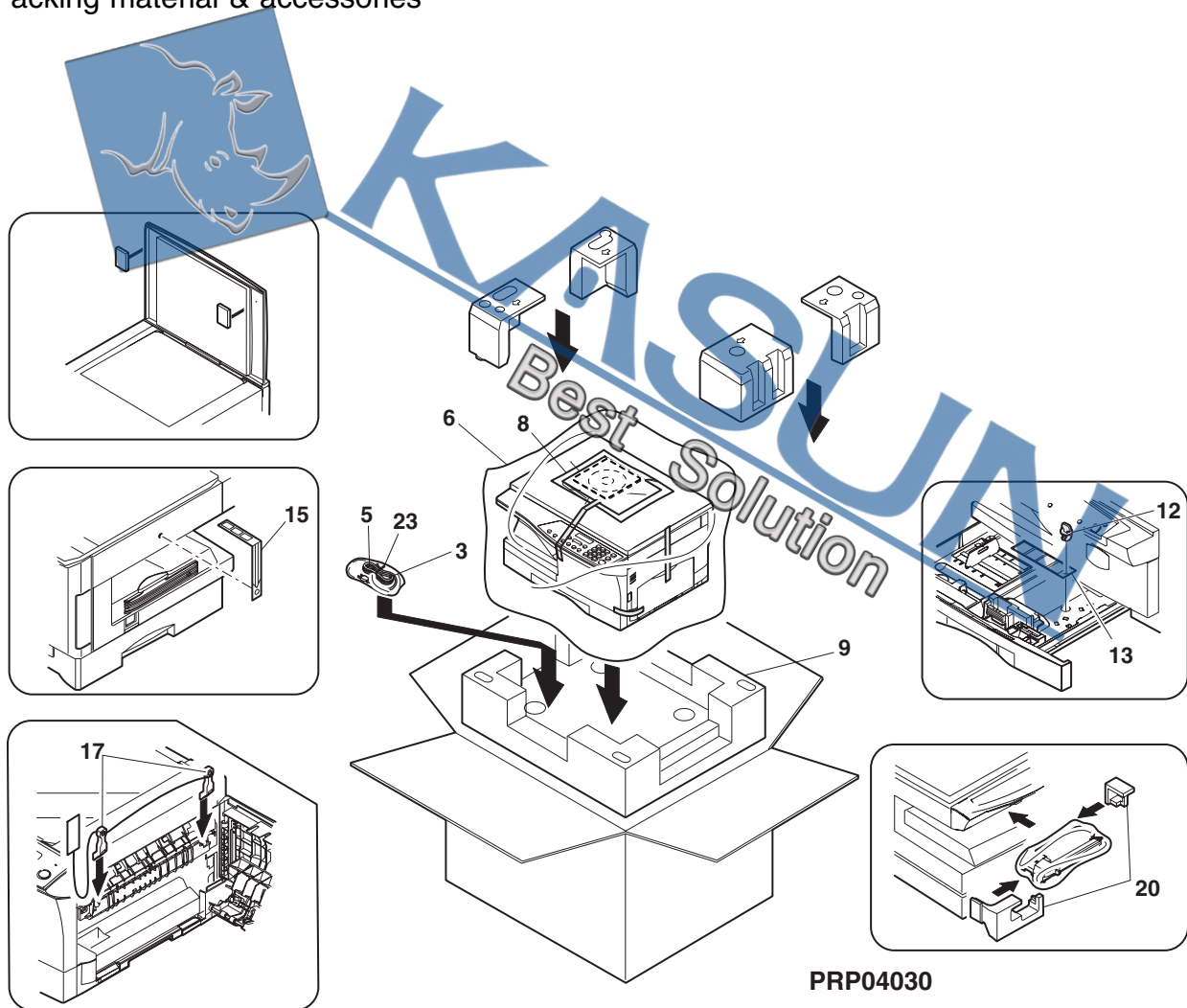
19 DV cartridge unit



20 Packing material & accessories

NO.	PARTS CODE	PRICE RANK	NEW MARK	PART RANK	DESCRIPTION
3	QACCB7521QCZZ	AS		B	AC cord [South Africa,Special Country]
	QACCBR626QCPZ	AU		B	AC cord [Yemen,Oman,Qatar,Kuwait,Bahrain,UAE,Saudi Arabia(220V)]
	QACCER622QCPZ	AQ		B	AC cord [Other Countries]
	QACCFR620QCPZ	AX		B	AC cord [Singapore,Malaysia]
	QACCZR941QCPZ	BB		B	AC cord [Thailand]
	QPLGA4171CCPZ	AR		B	AC plug [South Africa]
	PHOG-1023CCZZ	AB		B	Plug protector [South Africa]
5	SSAKA5003CCZZ	AA		D	Vinyl bag(140×260mm)
6	SSAKZ0002QSZ1	BH		D	Body vinyl bag
8	SSAKA2347QCZZ	AB		D	Vinyl bag(240×300mm)
9	SPAKA0659QSZZ	BL		D	Bottom packing add
12	LHLDW1226FCZZ	AB		C	Turn fastener
13	TTAG-0002QSZZ	AB		D	Tray rotation tag
15	TTAG-0010QSZZ	AD		D	Scanner fixing tag
17	CLEVP0120QS01	AF		C	Pressure release block lever
20	SPAKA0411QSZZ	AE		D	Accessories add A
23	LBND00075FCZZ	AB		C	AC cord band

20 Packing material & accessories





SHARP

COPYRIGHT © 2010 BY SHARP CORPORATION

All rights reserved.

Printed in Japan.

No part of this publication may be reproduced,
stored in a retrieval system, or transmitted.

In any form or by any means,
electronic, mechanical, photocopying, recording, or otherwise,
without prior written permission of the publisher.

SHARP CORPORATION
Business Solutions Group
CS Promotion Center
Yamatokoriyama, Nara 639-1186, Japan
2010 September Printed in Japan ⓘ